



Chipsmall Limited consists of a professional team with an average of over 10 year of expertise in the distribution of electronic components. Based in Hongkong, we have already established firm and mutual-benefit business relationships with customers from,Europe,America and south Asia,supplying obsolete and hard-to-find components to meet their specific needs.

With the principle of "Quality Parts,Customers Priority,Honest Operation,and Considerate Service",our business mainly focus on the distribution of electronic components. Line cards we deal with include Microchip,ALPS,ROHM,Xilinx,Pulse,ON,Everlight and Freescale. Main products comprise IC,Modules,Potentiometer,IC Socket,Relay,Connector.Our parts cover such applications as commercial,industrial, and automotives areas.

We are looking forward to setting up business relationship with you and hope to provide you with the best service and solution. Let us make a better world for our industry!



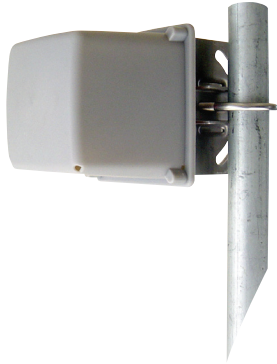
Contact us

Tel: +86-755-8981 8866 Fax: +86-755-8427 6832

Email & Skype: info@chipsmall.com Web: www.chipsmall.com

Address: A1208, Overseas Decoration Building, #122 Zhenhua RD., Futian, Shenzhen, China





MINI DIRECTIONAL ANTENNA, 2400 TO 2483 MHz OPERATION

The 2.4 GHz mini directional antennas offered by Laird are a sub-compact antenna for the most demanding client applications. The antennas offer high gain in an ultra-small, aesthetically pleasing package. These are constructed of gray color UV ABS plastic with aluminum backplate and a stainless steel mounting bracket.

The antenna can be used in horizontal or vertical polarization by making a change to the bracket mounting. The stainless steel bracket affords +/- 15° tilt adjustment. The compact, low visual impact attractive styling blends well in almost any application. The antenna comes with an integral N female connector standard.

FEATURES AND BENEFITS

- 12 dBi gain in a mini directional antenna
- Rugged and weatherproof
- Ultra low wind loading and ultra low visual impact
- Vertical or horizontal polarization
- Type N female connector
- Stainless steel bracket and hardware

APPLICATIONS

- 2.4 GHz wireless LAN applications
- 802.11b/g client antennas
- WiMAX

SPECIFICATIONS

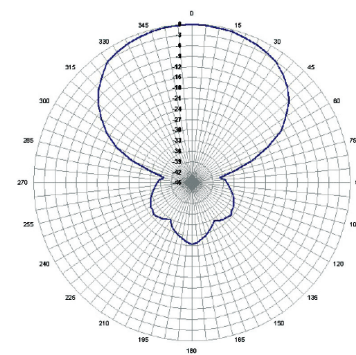
PARAMETER	
Frequency range	2400 to 2483 MHz
Gain	12 dBi
Horizontal beamwidth	65°
Vertical beamwidth	34°
Front-to-back	25 dB
Input return loss (S11)	-14 dB
VSWR	1.5:1
Impedance	50 ohm
Input power	100 W
Operating temperature	-40°C to +70°C
Pole size	1 to 1.66 in (25 mm to 39 mm)
Weight	13.5 oz (383 g)
Dimension (W x L x H)	4 x 4 x 4 in (102 x 102 x 102 mm)
Bracket tilt	15°

SYSTEM ORDERING

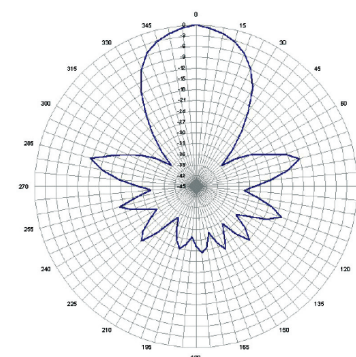
MD24-12 2.4 GHz 12 dBi Mini Directional Antenna

ANTENNA PATTERNS

Horizontal plane 2400 MHz



Elevation plane 2400 MHz



Americas: +1.847.839.6925
IAS-AmericasEastSales@lairdtech.com

Europe: +44.1628.858941
IAS-EUSales@lairdtech.com

Asia: +86.21.5855.0827.127
IAS-AsiaSales@lairdtech.com

www.lairdtech.com

ANT-DS-MD24-12 1115

Any information furnished by Laird Inc. and its agents is believed to be accurate and reliable. All specifications are subject to change without notice. Responsibility for the use and application of Laird materials rests with the end user, since Laird and its agents cannot be aware of all potential uses. Laird makes no warranties as to the fitness, merchantability or suitability of any Laird materials or products for any specific or general uses. Laird shall not be liable for incidental or consequential damages of any kind. All Laird products are sold pursuant to the Laird Terms and Conditions of sale in effect from time to time, a copy of which will be furnished upon request. © Copyright 2015 Laird Inc. All Rights Reserved. Laird, Laird Technologies, the Laird Logo, and other marks are trademarks or registered trademarks of Laird Inc. or an affiliate company thereof. Other product or service names may be the property of third parties. Nothing herein provides a license under any Laird or any third party intellectual property rights.