



Chipsmall Limited consists of a professional team with an average of over 10 year of expertise in the distribution of electronic components. Based in Hongkong, we have already established firm and mutual-benefit business relationships with customers from,Europe,America and south Asia,supplying obsolete and hard-to-find components to meet their specific needs.

With the principle of “Quality Parts,Customers Priority,Honest Operation,and Considerate Service”,our business mainly focus on the distribution of electronic components. Line cards we deal with include Microchip,ALPS,ROHM,Xilinx,Pulse,ON,Everlight and Freescale. Main products comprise IC,Modules,Potentiometer,IC Socket,Relay,Connector.Our parts cover such applications as commercial,industrial, and automotives areas.

We are looking forward to setting up business relationship with you and hope to provide you with the best service and solution. Let us make a better world for our industry!



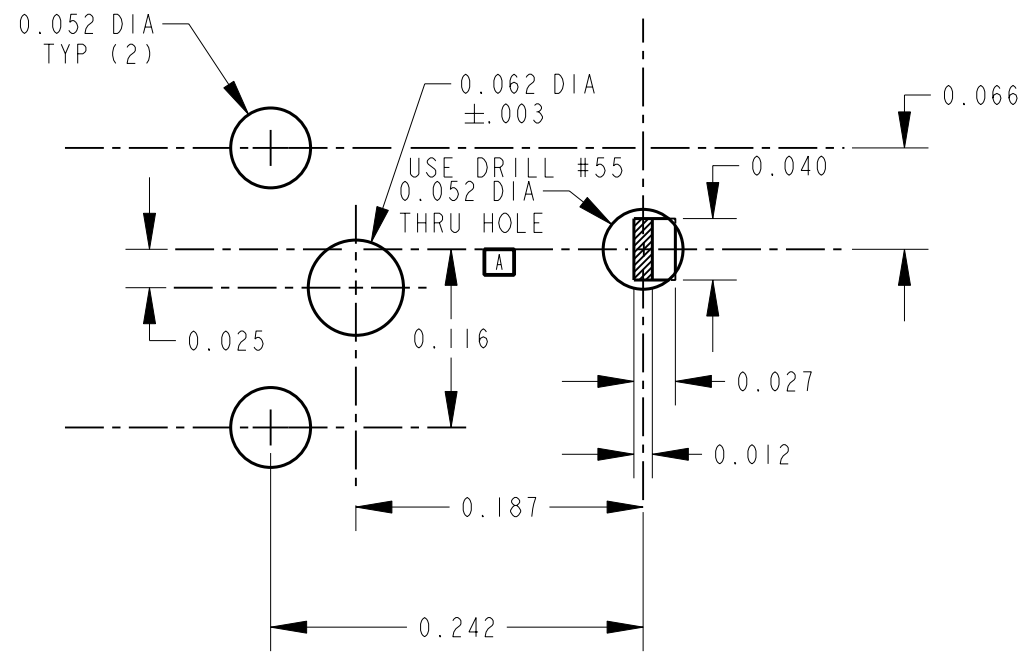
Contact us

Tel: +86-755-8981 8866 Fax: +86-755-8427 6832

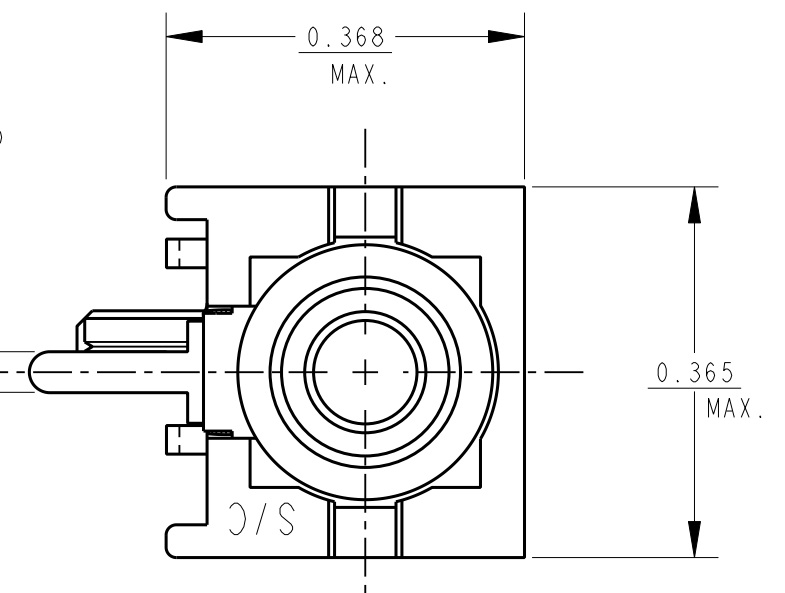
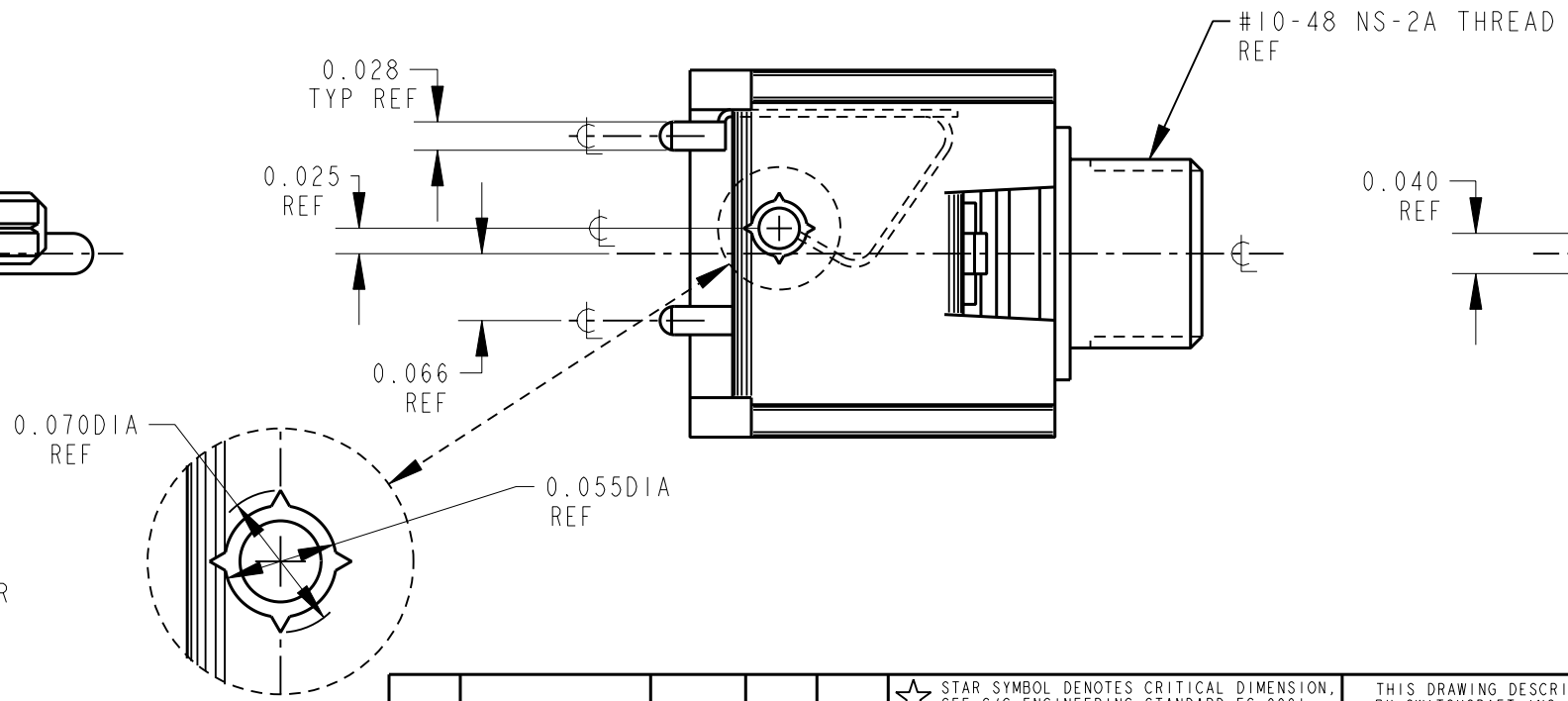
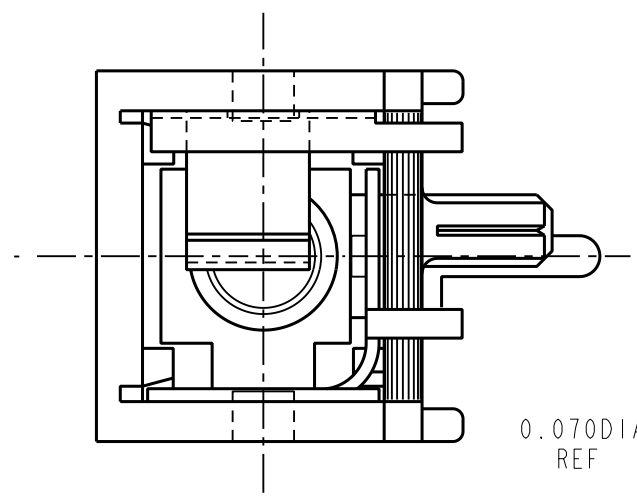
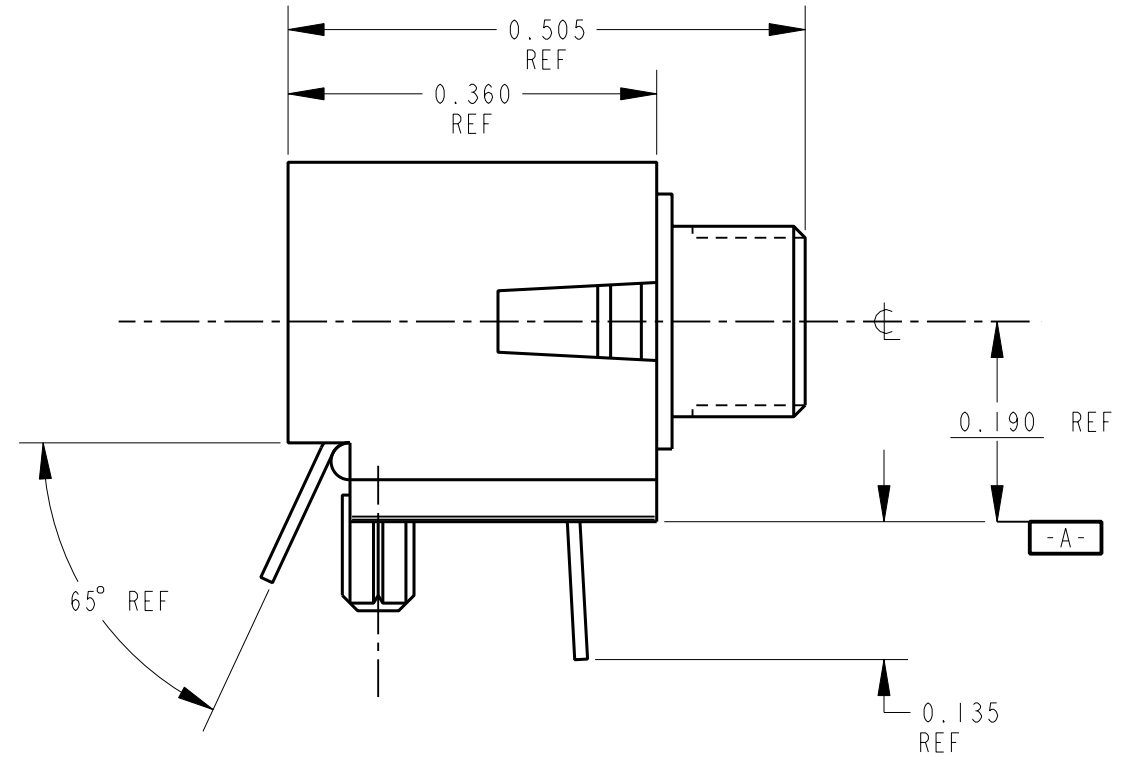
Email & Skype: info@chipsmall.com Web: www.chipsmall.com

Address: A1208, Overseas Decoration Building, #122 Zhenhua RD., Futian, Shenzhen, China





RECOMMENDED FOOTPRINT
COMPONENT SIDE
SCALE = 8 : 1



CUSTOMER DRAWING
CAD/CAM DWG. NO.
s.mdp21ra_cd
SHEET 1 OF 1

- NOTES:
- MATERIAL AND FINISHES:
 - PLASTIC TO BE LIQUID CRYSTAL POLYMER U.L. RECOGNIZED 94 V-0.
 - THREADED BUSHING: BRASS ALLOY NICKEL PLATED.
 - TIPSPRING: PHOS. BRONZE ALLOY
 - SELECTIVE PLATE: NICKEL AND TIN-LEAD.
 - SLEEVE/GROUND TERMINAL, BRASS ALLOY TIN-LEAD W/NICKEL UNDERPLATE.

ISSUE	CHANGE NO.	DATE	BY	APP'D
A	FIRST DRAWN	3-24-94	ES	GHJ
REVISIONS				

★ STAR SYMBOL DENOTES CRITICAL DIMENSION, SEE S/C ENGINEERING STANDARD ES-0001

UNLESS OTHERWISE SPECIFIED

- ALL DIMENSIONS IN INCHES
- DECIMAL DIMENSIONS ±.005
- FRACTIONAL DIMENSIONS ±1/64
- ANGLES ±1/2°
- ALL DIA'S CONCENTRIC WITHIN .005 T.I.R.
- REMOVE ALL BURRS
- MAKE NO DIMENSIONAL ALLOWANCES FOR APPLIED FINISHES, I.E., PLATING, PAINTING, ETC.
- HOLES ON THE SAME CENTERLINE MUST BE ALIGNED WITHIN ±.002

DO NOT SCALE DRAWING

THIS DRAWING DESCRIBES A DESIGN CONSIDERED PROPRIETARY IN NATURE, DEVELOPED AND MANUFACTURED BY SWITCHCRAFT INC. AND IS RELEASED ON A CONFIDENTIAL BASIS FOR IDENTIFICATION PURPOSE ONLY.			
SIZE	WIDTH	MULT	LBS./M
FINISH		MATERIAL	
SPEC. NO.		SPEC. NO.	
FIRST USED ON		SCALE	
		1:1.1875	
DATE DRAWN	BY	CHK'D	APP'D
3-24-94	ES	BMD 4-19-94	GHJ 4-19-94
NAME		PART NO.	
MICRO JACK		MDP21RA	
			ISSUE
			A

