



Chipsmall Limited consists of a professional team with an average of over 10 year of expertise in the distribution of electronic components. Based in Hongkong, we have already established firm and mutual-benefit business relationships with customers from,Europe,America and south Asia,supplying obsolete and hard-to-find components to meet their specific needs.

With the principle of “Quality Parts,Customers Priority,Honest Operation,and Considerate Service”,our business mainly focus on the distribution of electronic components. Line cards we deal with include Microchip,ALPS,ROHM,Xilinx,Pulse,ON,Everlight and Freescale. Main products comprise IC,Modules,Potentiometer,IC Socket,Relay,Connector.Our parts cover such applications as commercial,industrial, and automotives areas.

We are looking forward to setting up business relationship with you and hope to provide you with the best service and solution. Let us make a better world for our industry!



Contact us

Tel: +86-755-8981 8866 Fax: +86-755-8427 6832

Email & Skype: info@chipsmall.com Web: www.chipsmall.com

Address: A1208, Overseas Decoration Building, #122 Zhenhua RD., Futian, Shenzhen, China



- ***Snap-acting tactile feel***
- ***Small package size***
- ***Available in vertical or right angle PCB mount***
- ***Long total travel of 2,9 mm***
- ***RoHS compliant***

- ***Detect the presence of a mechanical device***
- ***Medical devices***
- ***Consumer electronic devices***

CONTACT RATING: 0.3A @ 6 VDC.
MECHANICAL & ELECTRICAL LIFE: 10,000 operations.
CONTACT RESISTANCE: 200 m Ω max.
OPERATING TEMPERATURE: -25°C to +70°C.
SOLDERABILITY: Wave solder, no wash.
PACKAGING: Bulk.

HOUSING & BASE: P.P.S.

ACTUATOR: Nylon 4/6

MOVABLE CONTACT: Copper alloy, tin & silver plated.

STATIONARY CONTACTS: Copper alloy, silver plated.

TERMINALS: Copper alloy, tin plated.

NOTE: MDS series is RoHS compliant, but not compatible. See technical data section of this catalog for RoHS compliant and compatible definitions and specifications.

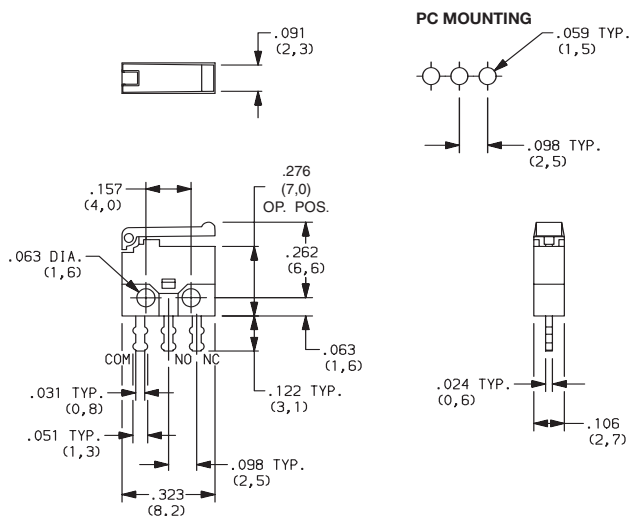
NOTE: For the latest information regarding RoHS compliance, please go to: www.ittcannon.com/rohs.


NOTE: Specifications and materials listed above are for switches with standard outputs. For information on specific and custom switches, consult Customer Service Center.

Complete part numbers for MDS Series Switches are shown below.



MDS001
SPDT



PART NUMBER	DESCRIPTION
MDS001	Vertical
SCHEMATIC	
SPDT	



Detect

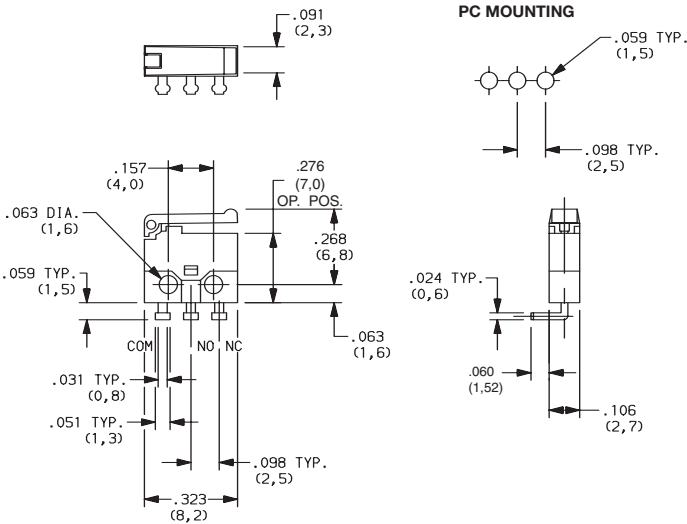


Dimensions are shown: Inch (mm)
Specifications and dimensions subject to change

MDS Series

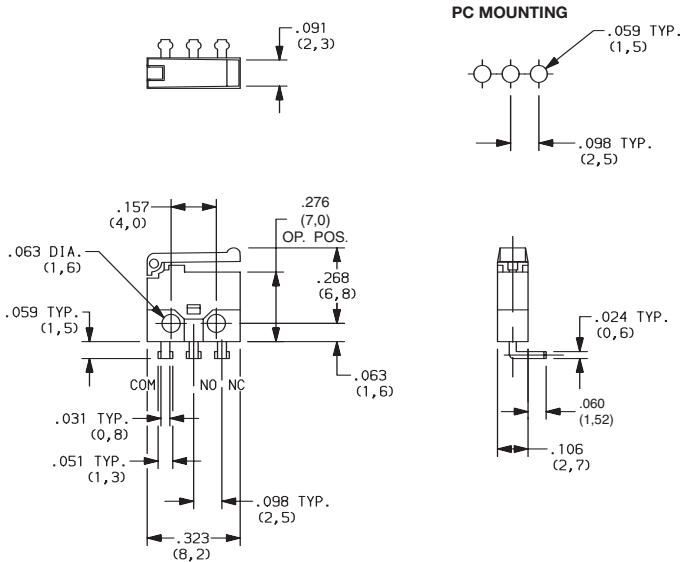
Micro Snap-acting Detect Switches

PART NUMBER	DESCRIPTION
MDS002	Right Angle, Left bend
SCHEMATIC	
SPDT	



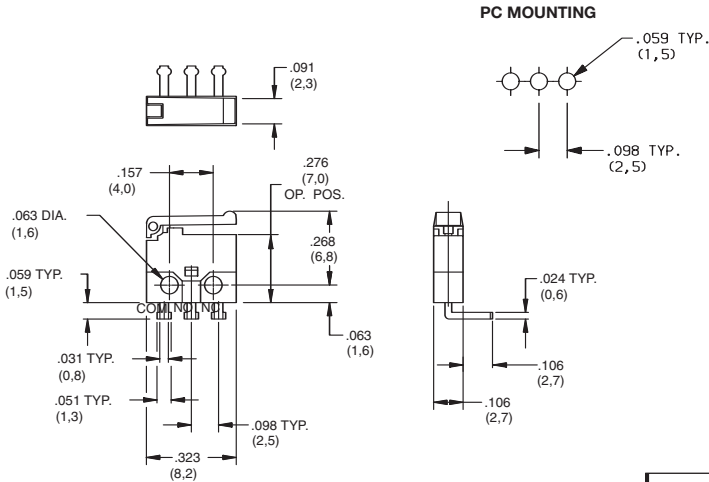
MDS002
SPDT

PART NUMBER	DESCRIPTION
MDS003	Right Angle, Right bend
SCHEMATIC	
SPDT	



MDS003
SPDT

PART NUMBER	DESCRIPTION
MDS005	Right Angle, Right bend
SCHEMATIC	
SPDT	




Third Angle
Projection

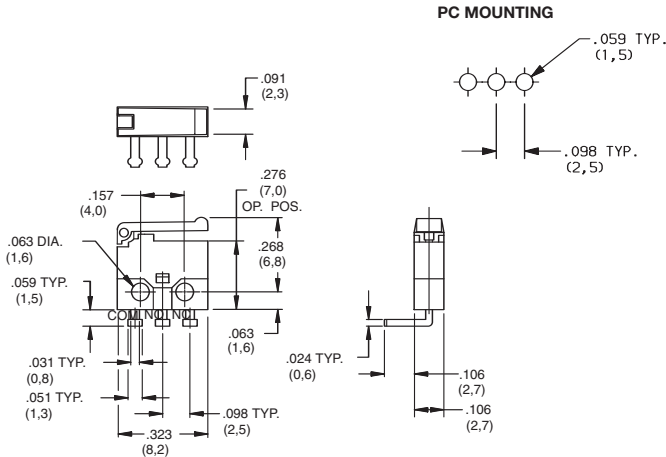
Dimensions are shown: Inch (mm)
Specifications and dimensions subject to change

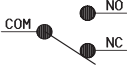


Detect

MDS Series Micro Snap-acting Detect Switches

PART NUMBER	DESCRIPTION
MDS006	Left Bend
SCHEMATIC	
SPDT	



PART NUMBER	DESCRIPTION
MDS007	Straight Terminal
SCHEMATIC	
SPDT	

