



Chipsmall Limited consists of a professional team with an average of over 10 year of expertise in the distribution of electronic components. Based in Hongkong, we have already established firm and mutual-benefit business relationships with customers from,Europe,America and south Asia,supplying obsolete and hard-to-find components to meet their specific needs.

With the principle of “Quality Parts,Customers Priority,Honest Operation,and Considerate Service”,our business mainly focus on the distribution of electronic components. Line cards we deal with include Microchip,ALPS,ROHM,Xilinx,Pulse,ON,Everlight and Freescale. Main products comprise IC,Modules,Potentiometer,IC Socket,Relay,Connector.Our parts cover such applications as commercial,industrial, and automotives areas.

We are looking forward to setting up business relationship with you and hope to provide you with the best service and solution. Let us make a better world for our industry!



Contact us

Tel: +86-755-8981 8866 Fax: +86-755-8427 6832

Email & Skype: info@chipsmall.com Web: www.chipsmall.com

Address: A1208, Overseas Decoration Building, #122 Zhenhua RD., Futian, Shenzhen, China



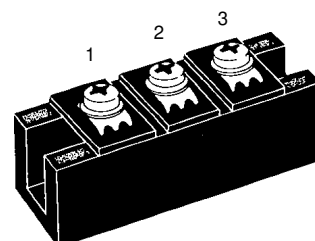
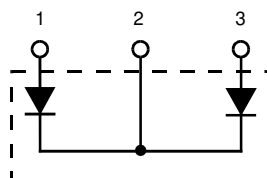
HiPerFRED™

Epitaxial Diode

dual diode, common cathode

MEK 600-04 DA
 $V_{RRM} = 400 \text{ V}$
 $I_{FAVM} = 880 \text{ A}$
 $t_{rr} = 220 \text{ ns}$

V_{RSM} V	V_{RRM} V	Type
400	400	MEK 600-04DA



Symbol	Conditions	Maximum Ratings	
I_{FAVM}	$T_C = 25^\circ\text{C}$; rectangular, $d = 0.5$	880	A
I_{FAVM}	$T_C = 80^\circ\text{C}$; rectangular, $d = 0.5$	575	A
I_{FSM}	$T_{VJ} = 25^\circ\text{C}$; $t = 10 \text{ ms}$ (50 Hz), sine	tbd	A
T_{VJ}		-40...+150	$^\circ\text{C}$
T_{stg}		-40...+125	$^\circ\text{C}$
P_{tot}	$T_C = 25^\circ\text{C}$	1100	W
V_{ISOL}	50/60 Hz, RMS; $I_{ISOL} \leq 1 \text{ mA}$	3600	V~
M_d	Mounting torque with screw M5 Terminal connection torque	2.25-2.75/20-25 4.5-5.5/40-48	Nm/lb.in. Nm/lb.in.
a	Allowable acceleration	50	m/s^2

Symbol	Conditions	Characteristic Values		
		min.	typ.	max.
I_R	$T_{VJ} = 25^\circ\text{C}$ $V_R = V_{RRM}$ $T_{VJ} = 125^\circ\text{C}$ $V_R = V_{RRM}$		6	6 mA mA
V_F	$I_F = 400 \text{ A}$; $T_{VJ} = 125^\circ\text{C}$ $T_{VJ} = 25^\circ\text{C}$			1.1 1.4 V V
t_{rr}	$V_R = 100 \text{ V}$; $-di_F/dt = 900 \text{ A}/\mu\text{s}$		220	ns
I_{RM}	$I_F = 400 \text{ A}$; $T_{VJ} = 125^\circ\text{C}$		80	A
R_{thJS}				0.11 K/W
R_{thJC}				0.22 K/W
d_s	Creeping distance on surface	12.7		mm
d_A	Strike distance through air	9.6		mm
Weight			150	g

Data according to IEC 60747

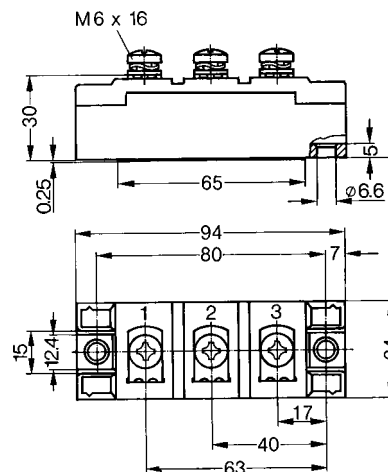
Features

- HiPerFRED™ diode chips
- fast reverse recovery
- low operating forward voltage
- low leakage current
- avalanche capability
- Industry Standard package
- with isolated DCB ceramic base plate
- UL registered E72873

Applications

- Topologies
- dual diode with common cathode
- high current single diode with pins 1 and 3 paralleled
- Circuits
- free wheeling diode of choppers, H-bridges, phaselegs etc.
- secondary rectifier for switched mode power supplies, welders etc.

Dimensions in mm (1 mm = 0.0394")



010