



Chipsmall Limited consists of a professional team with an average of over 10 year of expertise in the distribution of electronic components. Based in Hongkong, we have already established firm and mutual-benefit business relationships with customers from,Europe,America and south Asia,supplying obsolete and hard-to-find components to meet their specific needs.

With the principle of “Quality Parts,Customers Priority,Honest Operation,and Considerate Service”,our business mainly focus on the distribution of electronic components. Line cards we deal with include Microchip,ALPS,ROHM,Xilinx,Pulse,ON,Everlight and Freescale. Main products comprise IC,Modules,Potentiometer,IC Socket,Relay,Connector.Our parts cover such applications as commercial,industrial, and automotives areas.

We are looking forward to setting up business relationship with you and hope to provide you with the best service and solution. Let us make a better world for our industry!



Contact us

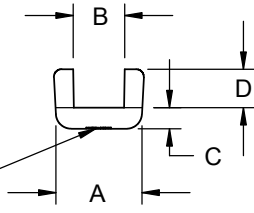
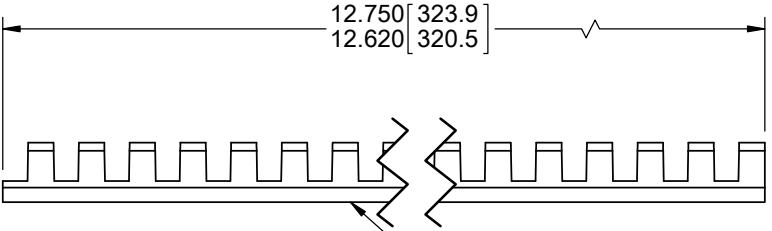
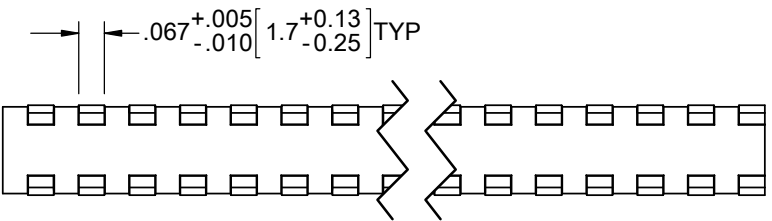
Tel: +86-755-8981 8866 Fax: +86-755-8427 6832

Email & Skype: info@chipsmall.com Web: www.chipsmall.com

Address: A1208, Overseas Decoration Building, #122 Zhenhua RD., Futian, Shenzhen, China



MS21266 #	RICHCO P/N	SHEET THICKNESS (REF)	A +.015 -.005	B +.015 -.005	C +.015 -.005	D +.020 -.005
MS21266-1N	MGS-1-01	.015-.052 [0.4-1.3]	.150 [3.8]	.056 [1.4]	.055 [1.4]	.100 [2.5]
MS21266-2N	MGS-2-01	.052-.085 [1.3-2.2]	.175 [4.4]	.090 [2.3]		
MS21266-3N	MGS-3-01	.085-.128 [2.2-3.3]	.220 [5.6]	.131 [3.3]		
MS21266-4N	MGS-4-01	.128-.192 [3.3-4.9]	.325 [8.3]	.195 [5]	.070 [1.8]	.160 [4.1]
MS21266-5N	MGS-5-01	.192-.255 [4.9-6.5]	.385 [9.8]	.260 [6.6]		
MS21266-6N	MGS-6-01	.255-.318 [6.5-8.1]	.445 [11.3]	.320 [8.1]	.075 [1.9]	.180 [4.6]
MS21266-8N	MGS-8-01	.380-.510 [9.7-13]	.640 [16.3]	.515 [13.1]		



MS PART NUMBER

NOTES:
1. MATERIAL: NYLON 6/6 UL 94 V-2 (RMS-01)
2. COLOR: NATURAL

REV.			TITLE: MOLDED GROMMET STRIP			UNITS= IN [mm]		FINAL	
E	ADDED BACK MGS-8, SEE CO 200739	SK 12/02/2011	FILE #: MGS	DWN: D.Z.	APP: D.Z.	PART #		PRINT TYPE	
D	REMOVED -8N CO#200722	SK 10.07.2011	SHEET: 1 OF 1	SHEET SIZE: A	DT: OCT/05/2011	CHKD: S.K.	SEE TABLE		CA
C	ADDED -8N AND REDONE IN SOLIDWORKS, CO#200721	SK 10.06.2011	RE: RICHCO INC.		RICHCO, INC.		WWW.RICHCO-INC.COM		
B	UPDATED PRINT	SM 03.12.2002							
A	CHANGED FILE NO. AND TITLE BLOCK	SM 06.19.2001							
REV.	DESCRIPTION	ENGR. DATE							

CREATED USING SOLIDWORKS			TOLERANCES UNLESS NOTED .XX=±.010 .XXX=±.005 FRAC.=±1/64 ANG.=±1°	
--------------------------	--	--	---	--