



Chipsmall Limited consists of a professional team with an average of over 10 year of expertise in the distribution of electronic components. Based in Hongkong, we have already established firm and mutual-benefit business relationships with customers from,Europe,America and south Asia,supplying obsolete and hard-to-find components to meet their specific needs.

With the principle of “Quality Parts,Customers Priority,Honest Operation,and Considerate Service”,our business mainly focus on the distribution of electronic components. Line cards we deal with include Microchip,ALPS,ROHM,Xilinx,Pulse,ON,Everlight and Freescale. Main products comprise IC,Modules,Potentiometer,IC Socket,Relay,Connector.Our parts cover such applications as commercial,industrial, and automotives areas.

We are looking forward to setting up business relationship with you and hope to provide you with the best service and solution. Let us make a better world for our industry!



## Contact us

Tel: +86-755-8981 8866 Fax: +86-755-8427 6832

Email & Skype: info@chipsmall.com Web: www.chipsmall.com

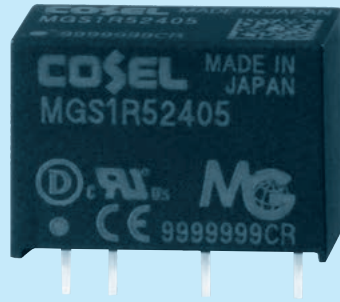
Address: A1208, Overseas Decoration Building, #122 Zhenhua RD., Futian, Shenzhen, China



# MGS1R5

MG S 1R5 24 05 -□

① ② ③ ④ ⑤ ⑥



- ① Series name
- ② Single output
- ③ Output wattage
- ④ Input voltage
- ⑤ Output voltage
- ⑥ Optional
- Y2: Output voltage adjustable (+10%, -5%)

| MODEL                 | MGS1R5053R3 | MGS1R50505 | MGS1R50512 | MGS1R50515 | MGS1R5123R3 | MGS1R51205 | MGS1R51212 | MGS1R51215 |
|-----------------------|-------------|------------|------------|------------|-------------|------------|------------|------------|
| MAX OUTPUT WATTAGE[W] | 1.32        | 1.50       | 1.56       | 1.50       | 1.32        | 1.50       | 1.56       | 1.50       |
| DC OUTPUT             | VOLTAGE[V]  | 3.3        | 5          | 12         | 15          | 3.3        | 5          | 12         |
|                       | CURRENT[A]  | 0.4        | 0.3        | 0.13       | 0.1         | 0.4        | 0.3        | 0.13       |

## SPECIFICATIONS

|                           | MODEL                      | MGS1R5053R3  | MGS1R50505    | MGS1R50512    | MGS1R50515  | MGS1R5123R3                             | MGS1R51205    | MGS1R51212    | MGS1R51215 |        |
|---------------------------|----------------------------|--|---------------|---------------|-------------|---|---------------|---------------|------------|--------|
| INPUT                     | VOLTAGE[V]                 | DC4.5 - 9 (Surge voltage 12.5V, 100ms max)           |               |               |             | DC9 - 18 (Surge voltage 25V, 100ms max) |               |               |            |        |
|                           | CURRENT[A]                 | *1 0.33typ   | 0.37typ       | 0.37typ       | 0.36typ     | 0.14typ                                 | 0.15typ       | 0.16typ       | 0.15typ    |        |
|                           | EFFICIENCY[%]              | *1 80typ   | 82typ         | 85typ         | 84typ       | 80typ                                   | 83typ         | 84typ         | 84typ      |        |
| OUTPUT                    | VOLTAGE[V]                 | 3.3  | 5             | 12            | 15          | 3.3                                     | 5             | 12            | 15         |        |
|                           | CURRENT[A]                 | 0.4  | 0.3           | 0.13          | 0.1         | 0.4                                     | 0.3           | 0.13          | 0.1        |        |
|                           | LINE REGULATION[mV]        | 20max  | 20max         | 48max         | 60max       | 20max                                   | 20max         | 48max         | 60max      |        |
|                           | LOAD REGULATION[mV]        | 20max  | 20max         | 48max         | 60max       | 20max                                   | 20max         | 48max         | 60max      |        |
|                           | RIPPLE[mVp-p]              | *2 120max  | 120max        | 150max        | 150max      | 120max                                  | 120max        | 150max        | 150max     |        |
|                           | RIPPLE NOISE[mVp-p]        | *2 200max  | 200max        | 200max        | 200max      | 200max                                  | 200max        | 200max        | 200max     |        |
|                           | TEMPERATURE REGULATION[mV] | -20 to +85°C   | 50max         | 50max         | 150max      | 180max                                  | 50max         | 50max         | 150max     | 180max |
|                           |                            | -40 to +85°C   | 80max         | 80max         | 240max      | 290max                                  | 80max         | 80max         | 240max     | 290max |
|                           | DRIFT[mV]                  | *3 20max   | 20max         | 48max         | 60max       | 20max                                   | 20max         | 48max         | 60max      |        |
|                           | START-UP TIME[ms]          | 30max (Minimum input, I <sub>o</sub> =100%)          |               |               |             |   |               |               |            |        |
| OUTPUT VOLTAGE SETTING[V] | 3.21 - 3.42                | 4.90 - 5.21  | 11.64 - 12.36 | 14.55 - 15.45 | 3.21 - 3.42 | 4.90 - 5.21                             | 11.64 - 12.36 | 14.55 - 15.45 |            |        |
| PROTECTION CIRCUIT        | OVERCURRENT PROTECTION     | Works over 105% of rating and recovers automatically |               |               |             |   |               |               |            |        |

| MODEL                 | MGS1R5243R3 | MGS1R52405 | MGS1R52412 | MGS1R52415 | MGS1R5483R3 | MGS1R54805 | MGS1R54812 | MGS1R54815 |
|-----------------------|-------------|------------|------------|------------|-------------|------------|------------|------------|
| MAX OUTPUT WATTAGE[W] | 1.32        | 1.50       | 1.56       | 1.50       | 1.32        | 1.50       | 1.56       | 1.50       |
| DC OUTPUT             | VOLTAGE[V]  | 3.3        | 5          | 12         | 15          | 3.3        | 5          | 12         |
|                       | CURRENT[A]  | 0.4        | 0.3        | 0.13       | 0.1         | 0.4        | 0.3        | 0.13       |

## SPECIFICATIONS

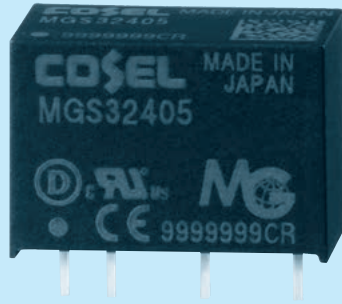
|                           | MODEL                      | MGS1R5243R3  | MGS1R52405    | MGS1R52412    | MGS1R52415  | MGS1R5483R3                               | MGS1R54805    | MGS1R54812    | MGS1R54815 |        |
|---------------------------|----------------------------|--|---------------|---------------|-------------|---|---------------|---------------|------------|--------|
| INPUT                     | VOLTAGE[V]                 | DC18 - 36 (Surge voltage 50V, 100ms max)             |               |               |             | DC36 - 76 (Surge voltage 100V, 100ms max) |               |               |            |        |
|                           | CURRENT[A]                 | *1 0.071typ  | 0.079typ      | 0.080typ      | 0.077typ    | 0.036typ                                  | 0.040typ      | 0.040typ      | 0.039typ   |        |
|                           | EFFICIENCY[%]              | *1 78typ   | 80typ         | 82typ         | 82typ       | 77typ                                     | 80typ         | 82typ         | 82typ      |        |
| OUTPUT                    | VOLTAGE[V]                 | 3.3  | 5             | 12            | 15          | 3.3                                       | 5             | 12            | 15         |        |
|                           | CURRENT[A]                 | 0.4  | 0.3           | 0.13          | 0.1         | 0.4                                       | 0.3           | 0.13          | 0.1        |        |
|                           | LINE REGULATION[mV]        | 20max  | 20max         | 48max         | 60max       | 20max                                     | 20max         | 48max         | 60max      |        |
|                           | LOAD REGULATION[mV]        | 20max  | 20max         | 48max         | 60max       | 20max                                     | 20max         | 48max         | 60max      |        |
|                           | RIPPLE[mVp-p]              | *2 120max  | 120max        | 150max        | 150max      | 120max                                    | 120max        | 150max        | 150max     |        |
|                           | RIPPLE NOISE[mVp-p]        | *2 200max  | 200max        | 200max        | 200max      | 200max                                    | 200max        | 200max        | 200max     |        |
|                           | TEMPERATURE REGULATION[mV] | -20 to +85°C   | 50max         | 50max         | 150max      | 180max                                    | 50max         | 50max         | 150max     | 180max |
|                           |                            | -40 to +85°C   | 80max         | 80max         | 240max      | 290max                                    | 80max         | 80max         | 240max     | 290max |
|                           | DRIFT[mV]                  | *3 20max   | 20max         | 48max         | 60max       | 20max                                     | 20max         | 48max         | 60max      |        |
|                           | START-UP TIME[ms]          | 30max (Minimum input, I <sub>o</sub> =100%)          |               |               |             |   |               |               |            |        |
| OUTPUT VOLTAGE SETTING[V] | 3.21 - 3.42                | 4.90 - 5.21  | 11.64 - 12.36 | 14.55 - 15.45 | 3.21 - 3.42 | 4.90 - 5.21                               | 11.64 - 12.36 | 14.55 - 15.45 |            |        |
| PROTECTION CIRCUIT        | OVERCURRENT PROTECTION     | Works over 105% of rating and recovers automatically |               |               |             |   |               |               |            |        |



# MGS3

MG S 3 24 05 -□

① ② ③ ④ ⑤ ⑥



- ① Series name
- ② Single output
- ③ Output wattage
- ④ Input voltage
- ⑤ Output voltage
- ⑥ Optional
- Y2: Output voltage adjustable (+10%, -5%)

| MODEL                 | MGS3053R3  | MGS30505 | MGS30512 | MGS30515 | MGS3123R3 | MGS31205 | MGS31212 | MGS31215 |     |
|-----------------------|------------|----------|----------|----------|-----------|----------|----------|----------|-----|
| MAX OUTPUT WATTAGE[W] | 2.64       | 3.0      | 3.0      | 3.0      | 2.64      | 3.0      | 3.0      | 3.0      |     |
| DC OUTPUT             | VOLTAGE[V] | 3.3      | 5        | 12       | 15        | 3.3      | 5        | 12       | 15  |
|                       | CURRENT[A] | 0.8      | 0.6      | 0.25     | 0.2       | 0.8      | 0.6      | 0.25     | 0.2 |

## SPECIFICATIONS

|                    | MODEL                      | MGS3053R3  | MGS30505 | MGS30512 | MGS30515 | MGS3123R3                               | MGS31205 | MGS31212 | MGS31215 |        |
|--------------------|----------------------------|--|----------|----------|----------|---|----------|----------|----------|--------|
| INPUT              | VOLTAGE[V]                 | DC4.5 - 9 (Surge voltage 12.5V, 100ms max)           |          |          |          | DC9 - 18 (Surge voltage 25V, 100ms max) |          |          |          |        |
|                    | CURRENT[A]                 | *1 0.67typ   | 0.73typ  | 0.71typ  | 0.71typ  | 0.28typ                                 | 0.30typ  | 0.29typ  | 0.30typ  |        |
|                    | EFFICIENCY[%]              | *1 79typ   | 82typ    | 85typ    | 85typ    | 80typ                                   | 83typ    | 86typ    | 85typ    |        |
| OUTPUT             | VOLTAGE[V]                 | 3.3  | 5        | 12       | 15       | 3.3                                     | 5        | 12       | 15       |        |
|                    | CURRENT[A]                 | 0.8  | 0.6      | 0.25     | 0.2      | 0.8                                     | 0.6      | 0.25     | 0.2      |        |
|                    | LINE REGULATION[mV]        | 20max  | 20max    | 48max    | 60max    | 20max                                   | 20max    | 48max    | 60max    |        |
|                    | LOAD REGULATION[mV]        | 20max  | 20max    | 48max    | 60max    | 20max                                   | 20max    | 48max    | 60max    |        |
|                    | RIPPLE[mVp-p]              | *2 120max  | 120max   | 150max   | 150max   | 120max                                  | 120max   | 150max   | 150max   |        |
|                    | RIPPLE NOISE[mVp-p]        | *2 200max  | 200max   | 200max   | 200max   | 200max                                  | 200max   | 200max   | 200max   |        |
|                    | TEMPERATURE REGULATION[mV] | -20 to +75°C   | 50max    | 50max    | 150max   | 180max                                  | 50max    | 50max    | 150max   | 180max |
|                    |                            | -40 to +75°C   | 80max    | 80max    | 240max   | 290max                                  | 80max    | 80max    | 240max   | 290max |
|                    | DRIFT[mV]                  | *3 20max   | 20max    | 48max    | 60max    | 20max                                   | 20max    | 48max    | 60max    |        |
|                    | START-UP TIME[ms]          | 30max (Minimum input, I <sub>o</sub> =100%)          |          |          |          |   |          |          |          |        |
| PROTECTION CIRCUIT | OVERCURRENT PROTECTION     | Works over 105% of rating and recovers automatically |          |          |          |   |          |          |          |        |

| MODEL                 | MGS3243R3  | MGS32405 | MGS32412 | MGS32415 | MGS3483R3 | MGS34805 | MGS34812 | MGS34815 |     |
|-----------------------|------------|----------|----------|----------|-----------|----------|----------|----------|-----|
| MAX OUTPUT WATTAGE[W] | 2.64       | 3.0      | 3.0      | 3.0      | 2.64      | 3.0      | 3.0      | 3.0      |     |
| DC OUTPUT             | VOLTAGE[V] | 3.3      | 5        | 12       | 15        | 3.3      | 5        | 12       | 15  |
|                       | CURRENT[A] | 0.8      | 0.6      | 0.25     | 0.2       | 0.8      | 0.6      | 0.25     | 0.2 |

## SPECIFICATIONS

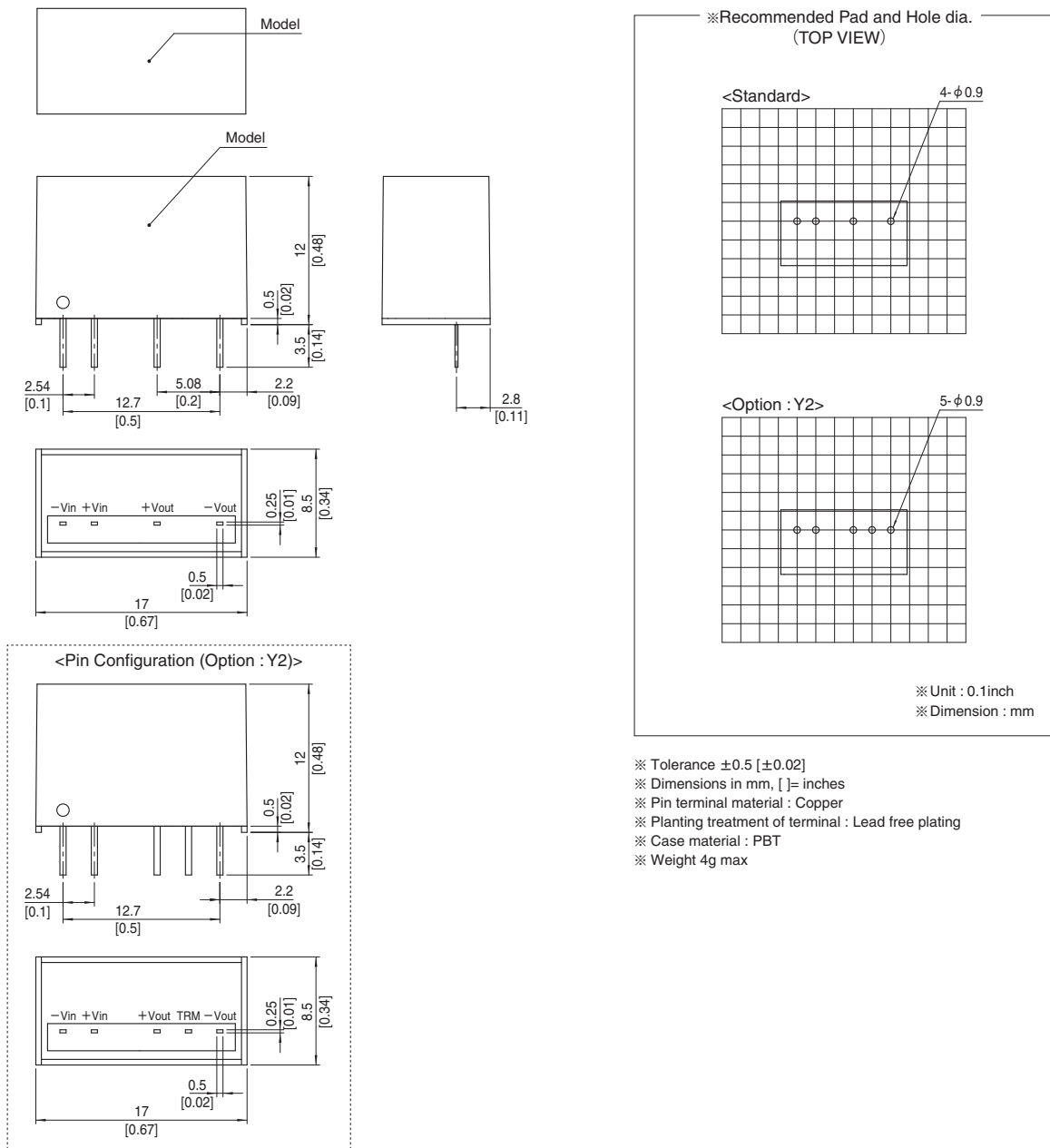
|                    | MODEL                      | MGS3243R3  | MGS32405 | MGS32412 | MGS32415 | MGS3483R3                                 | MGS34805 | MGS34812 | MGS34815 |        |
|--------------------|----------------------------|--|----------|----------|----------|---|----------|----------|----------|--------|
| INPUT              | VOLTAGE[V]                 | DC18 - 36 (Surge voltage 50V, 100ms max)             |          |          |          | DC36 - 76 (Surge voltage 100V, 100ms max) |          |          |          |        |
|                    | CURRENT[A]                 | *1 0.14typ   | 0.15typ  | 0.15typ  | 0.15typ  | 0.071typ                                  | 0.079typ | 0.074typ | 0.074typ |        |
|                    | EFFICIENCY[%]              | *1 80typ   | 82typ    | 85typ    | 85typ    | 78typ                                     | 80typ    | 85typ    | 85typ    |        |
| OUTPUT             | VOLTAGE[V]                 | 3.3  | 5        | 12       | 15       | 3.3                                       | 5        | 12       | 15       |        |
|                    | CURRENT[A]                 | 0.8  | 0.6      | 0.25     | 0.2      | 0.8                                       | 0.6      | 0.25     | 0.2      |        |
|                    | LINE REGULATION[mV]        | 20max  | 20max    | 48max    | 60max    | 20max                                     | 20max    | 48max    | 60max    |        |
|                    | LOAD REGULATION[mV]        | 20max  | 20max    | 48max    | 60max    | 20max                                     | 20max    | 48max    | 60max    |        |
|                    | RIPPLE[mVp-p]              | *2 120max  | 120max   | 150max   | 150max   | 120max                                    | 120max   | 150max   | 150max   |        |
|                    | RIPPLE NOISE[mVp-p]        | *2 200max  | 200max   | 200max   | 200max   | 200max                                    | 200max   | 200max   | 200max   |        |
|                    | TEMPERATURE REGULATION[mV] | -20 to +75°C   | 50max    | 50max    | 150max   | 180max                                    | 50max    | 50max    | 150max   | 180max |
|                    |                            | -40 to +75°C   | 80max    | 80max    | 240max   | 290max                                    | 80max    | 80max    | 240max   | 290max |
|                    | DRIFT[mV]                  | *3 20max   | 20max    | 48max    | 60max    | 20max                                     | 20max    | 48max    | 60max    |        |
|                    | START-UP TIME[ms]          | 30max (Minimum input, I <sub>o</sub> =100%)          |          |          |          |   |          |          |          |        |
| PROTECTION CIRCUIT | OVERCURRENT PROTECTION     | Works over 105% of rating and recovers automatically |          |          |          |   |          |          |          |        |

### GENERAL SPECIFICATIONS

|                    |   |  |
|--------------------|---|--|
| <b>ISOLATION</b>   | <b>INPUT-OUTPUT</b>                       | DC1,500V or AC1,000V 1minute, Cutoff current=10mA, DC500V 1,000MΩ min (20±15°C)            |
| <b>ENVIRONMENT</b> | <b>OPERATING TEMP.,HUMID.AND ALTITUDE</b> | -40 to +85°C, 20 to 95%RH (Non condensing) (Required derating), 5,000m (16,400feet) max    |
|                    | <b>STORAGE TEMP.,HUMID.AND ALTITUDE</b>   | -40 to +100°C, 20 to d95%RH (Non condensing), 9,000m (30,000feet) max                      |
|                    | <b>VIBRATION</b>                          | 10 - 55Hz 98.0m/s <sup>2</sup> (10G), 3minute period, 60minutes each along X, Y and Z axis |
|                    | <b>IMPACT</b>                             | 490.3m/s <sup>2</sup> (50G) 11ms, once each along X, Y and Z axis                          |
| <b>SAFETY</b>      | <b>AGENCY APPROVALS</b>                   | UL60950-1, C-UL, EN60950-1   |
| <b>OTHERS</b>      | <b>CASE SIZE/WEIGHT</b>                   | 17.0×12.0×8.5mm [0.67×0.48×0.34 inches] (W×H×D) / 4g max                                   |
|                    | <b>COOLING METHOD</b>                     | Convection/Forced air  |

- \*1 Rated input 5V, 12V, 24V or 48V DC I<sub>o</sub>=100%
- \*2 Ripple and ripple noise is measured by using test board with ceramic capacitor 1μF at 50mm from output pins.
- \*3 Drift is the DC output accuracy for eight hours period after a half-hour warm-up at 25°C.
- \* Parallel operation with other model is not possible.
- \* MGW3xx12/MGW3xx15 is available as single output, +24V/+30V

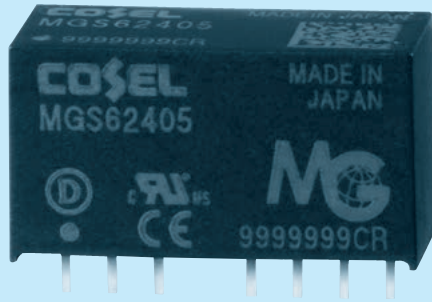
### External view



# MGS6

MG S 6 24 05 -□

① ② ③ ④ ⑤ ⑥



- ① Series name
- ② Single output
- ③ Output wattage
- ④ Input voltage
- ⑤ Output voltage
- ⑥ Optional
- Y2: Output voltage adjustable (+10%, -5%)

| MODEL                 | MGS6053R3  | MGS60505 | MGS60512 | MGS60515 | MGS6123R3 | MGS61205 | MGS61212 | MGS61215 |
|-----------------------|------------|----------|----------|----------|-----------|----------|----------|----------|
| MAX OUTPUT WATTAGE[W] | 5.28       | 6.0      | 6.0      | 6.0      | 5.28      | 6.0      | 6.0      | 6.0      |
| DC OUTPUT             | VOLTAGE[V] | 3.3      | 5        | 12       | 15        | 3.3      | 5        | 12       |
|                       | CURRENT[A] | 1.6      | 1.2      | 0.5      | 0.4       | 1.6      | 1.2      | 0.5      |

## SPECIFICATIONS

|                               | MODEL                          | MGS6053R3  | MGS60505    | MGS60512      | MGS60515      | MGS6123R3                               | MGS61205    | MGS61212      | MGS61215      |        |
|-------------------------------|--------------------------------|--|-------------|---------------|---------------|---|-------------|---------------|---------------|--------|
| INPUT                         | VOLTAGE[V]                     | DC4.5 - 9 (Surge voltage 12.5V, 100ms max)           |             |               |               | DC9 - 18 (Surge voltage 25V, 100ms max) |             |               |               |        |
|                               | CURRENT[A]                     | *1 1.31typ   | 1.42typ     | 1.37typ       | 1.37typ       | 0.54typ                                 | 0.59typ     | 0.57typ       | 0.57typ       |        |
|                               | EFFICIENCY[%]                  | *1 81typ   | 85typ       | 88typ         | 88typ         | 82typ                                   | 85typ       | 89typ         | 89typ         |        |
| OUTPUT                        | VOLTAGE[V]                     | 3.3  | 5           | 12            | 15            | 3.3                                     | 5           | 12            | 15            |        |
|                               | CURRENT[A]                     | 1.6  | 1.2         | 0.5           | 0.4           | 1.6                                     | 1.2         | 0.5           | 0.4           |        |
|                               | LINE REGULATION[mV]            | 20max  | 20max       | 48max         | 60max         | 20max                                   | 20max       | 48max         | 60max         |        |
|                               | LOAD REGULATION[mV]            | 20max  | 20max       | 48max         | 60max         | 20max                                   | 20max       | 48max         | 60max         |        |
|                               | RIPPLE[mVp-p]                  | lo=30% -   | 75max       | 75max         | 100max        | 100max                                  | 75max       | 75max         | 100max        | 100max |
|                               |                                | lo=0 - 30%   | 225max      | 225max        | 300max        | 300max                                  | 225max      | 225max        | 300max        | 300max |
|                               | RIPPLE NOISE[mVp-p]            | lo=30% -   | 120max      | 120max        | 150max        | 150max                                  | 120max      | 120max        | 150max        | 150max |
|                               |                                | lo=0 - 30%   | 300max      | 300max        | 400max        | 400max                                  | 300max      | 300max        | 400max        | 400max |
|                               | TEMPERATURE REGULATION[mV]     | -20 to +70°C   | 50max       | 50max         | 150max        | 180max                                  | 50max       | 50max         | 150max        | 180max |
|                               |                                | -40 to +70°C   | 80max       | 80max         | 240max        | 290max                                  | 80max       | 80max         | 240max        | 290max |
| DRIFT[mV]                     | *3 20max                       | 20max  | 48max       | 60max         | 20max         | 20max                                   | 48max       | 60max         |               |        |
| START-UP TIME[ms]             | 30max (Minimum input, lo=100%) |  |             |               |               |   |             |               |               |        |
| OUTPUT VOLTAGE SETTING[V]     | 3.21 - 3.42                    |  | 4.90 - 5.21 | 11.64 - 12.36 | 14.55 - 15.45 | 3.21 - 3.42                             | 4.90 - 5.21 | 11.64 - 12.36 | 14.55 - 15.45 |        |
| PROTECTION CIRCUIT AND OTHERS | OVERCURRENT PROTECTION         | Works over 105% of rating and recovers automatically |             |               |               |   |             |               |               |        |
|                               | REMOTE ON/OFF                  | Provided (Negative logic L : ON, H : OFF)            |             |               |               |   |             |               |               |        |

| MODEL                 | MGS6243R3  | MGS62405 | MGS62412 | MGS62415 | MGS6483R3 | MGS64805 | MGS64812 | MGS64815 |
|-----------------------|------------|----------|----------|----------|-----------|----------|----------|----------|
| MAX OUTPUT WATTAGE[W] | 5.28       | 6.0      | 6.0      | 6.0      | 5.28      | 6.0      | 6.0      | 6.0      |
| DC OUTPUT             | VOLTAGE[V] | 3.3      | 5        | 12       | 15        | 3.3      | 5        | 12       |
|                       | CURRENT[A] | 1.6      | 1.2      | 0.5      | 0.4       | 1.6      | 1.2      | 0.5      |

## SPECIFICATIONS

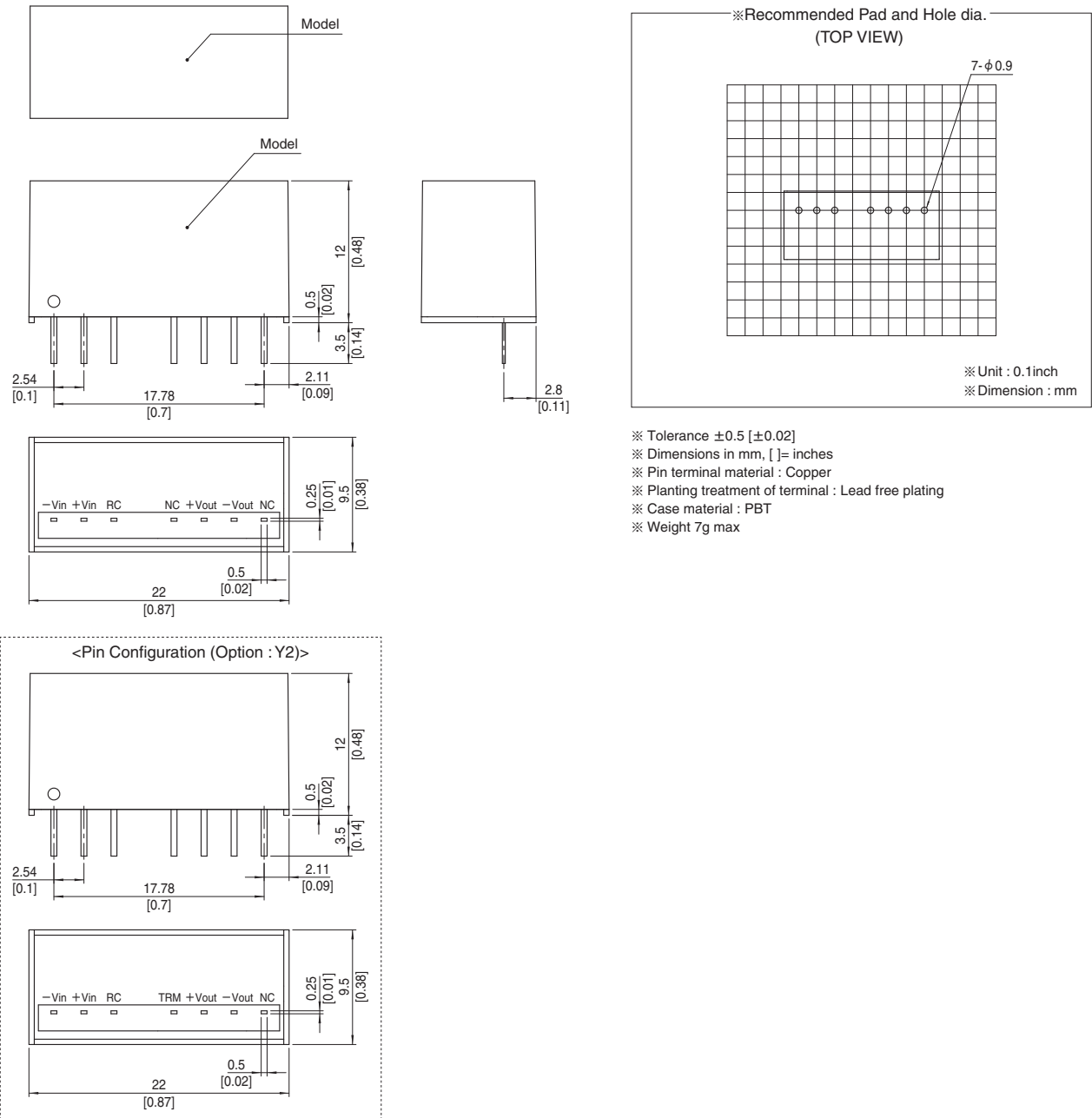
|                               | MODEL                          | MGS6243R3  | MGS62405    | MGS62412      | MGS62415      | MGS6483R3                                 | MGS64805    | MGS64812      | MGS64815      |        |
|-------------------------------|--------------------------------|--|-------------|---------------|---------------|---|-------------|---------------|---------------|--------|
| INPUT                         | VOLTAGE[V]                     | DC18 - 36 (Surge voltage 50V, 100ms max)             |             |               |               | DC36 - 76 (Surge voltage 100V, 100ms max) |             |               |               |        |
|                               | CURRENT[A]                     | *1 0.27typ   | 0.30typ     | 0.29typ       | 0.29typ       | 0.14typ                                   | 0.15typ     | 0.15typ       | 0.15typ       |        |
|                               | EFFICIENCY[%]                  | *1 82typ   | 85typ       | 89typ         | 89typ         | 81typ                                     | 85typ       | 89typ         | 89typ         |        |
| OUTPUT                        | VOLTAGE[V]                     | 3.3  | 5           | 12            | 15            | 3.3                                       | 5           | 12            | 15            |        |
|                               | CURRENT[A]                     | 1.6  | 1.2         | 0.5           | 0.4           | 1.6                                       | 1.2         | 0.5           | 0.4           |        |
|                               | LINE REGULATION[mV]            | 20max  | 20max       | 48max         | 60max         | 20max                                     | 20max       | 48max         | 60max         |        |
|                               | LOAD REGULATION[mV]            | 20max  | 20max       | 48max         | 60max         | 20max                                     | 20max       | 48max         | 60max         |        |
|                               | RIPPLE[mVp-p]                  | lo=30% -   | 75max       | 75max         | 100max        | 100max                                    | 75max       | 75max         | 100max        | 100max |
|                               |                                | lo=0 - 30%   | 225max      | 225max        | 300max        | 300max                                    | 225max      | 225max        | 300max        | 300max |
|                               | RIPPLE NOISE[mVp-p]            | lo=30% -   | 120max      | 120max        | 150max        | 150max                                    | 120max      | 120max        | 150max        | 150max |
|                               |                                | lo=0 - 30%   | 300max      | 300max        | 400max        | 400max                                    | 300max      | 300max        | 400max        | 400max |
|                               | TEMPERATURE REGULATION[mV]     | -20 to +70°C   | 50max       | 50max         | 150max        | 180max                                    | 50max       | 50max         | 150max        | 180max |
|                               |                                | -40 to +70°C   | 80max       | 80max         | 240max        | 290max                                    | 80max       | 80max         | 240max        | 290max |
| DRIFT[mV]                     | *3 20max                       | 20max  | 48max       | 60max         | 20max         | 20max                                     | 48max       | 60max         |               |        |
| START-UP TIME[ms]             | 30max (Minimum input, lo=100%) |  |             |               |               |   |             |               |               |        |
| OUTPUT VOLTAGE SETTING[V]     | 3.21 - 3.42                    |  | 4.90 - 5.21 | 11.64 - 12.36 | 14.55 - 15.45 | 3.21 - 3.42                               | 4.90 - 5.21 | 11.64 - 12.36 | 14.55 - 15.45 |        |
| PROTECTION CIRCUIT AND OTHERS | OVERCURRENT PROTECTION         | Works over 105% of rating and recovers automatically |             |               |               |   |             |               |               |        |
|                               | REMOTE ON/OFF                  | Provided (Negative logic L : ON, H : OFF)            |             |               |               |   |             |               |               |        |

### GENERAL SPECIFICATIONS

|             |                                    |  |
|-------------|------------------------------------|--|
| ISOLATION   | INPUT-OUTPUT                       | DC1,500V or AC1,000V 1minute, Cutoff current=10mA, DC500V 1,000MΩ min (20±15°C)            |
| ENVIRONMENT | OPERATING TEMP.,HUMID.AND ALTITUDE | -40 to +85°C, 20 to 95%RH (Non condensing) (Required derating), 5,000m (16,400feet) max    |
|             | STORAGE TEMP.,HUMID.AND ALTITUDE   | -40 to +100°C, 20 to 95%RH (Non condensing), 9,000m (30,000feet) max                       |
|             | VIBRATION                          | 10 - 55Hz 98.0m/s <sup>2</sup> (10G), 3minute period, 60minutes each along X, Y and Z axis |
|             | IMPACT                             | 490.3m/s <sup>2</sup> (50G) 11ms, once each along X, Y and Z axis                          |
| SAFETY      | AGENCY APPROVALS                   | UL60950-1, C-UL, EN60950-1   |
| OTHERS      | CASE SIZE/WEIGHT                   | 22.0×12.0×9.5mm [0.87×0.48×0.38 inches] (W×H×D) / 7g max                                   |
|             | COOLING METHOD                     | Convection/Forced air  |

- \*1 Rated input 5V, 12V, 24V or 48V DC I<sub>o</sub>=100%
- \*2 Ripple and ripple noise is measured by using test board with ceramic capacitor 1μF at 50mm from output pins.
- \*3 Drift is the DC output accuracy for eight hours period after a half-hour warm-up at 25°C.
- \* Parallel operation with other model is not possible.
- \* MGW6xx12/MGW6xx15 is available as single output, +24V/+30V

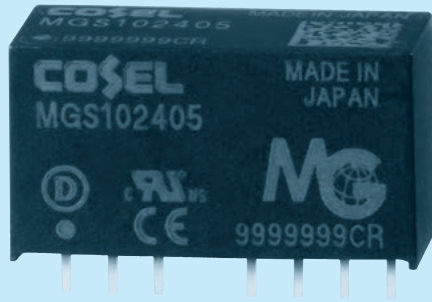
### External view



# MGS10

MG S 10 24 05 -□

① ② ③ ④ ⑤ ⑥



- ① Series name
- ② Single output
- ③ Output wattage
- ④ Input voltage
- ⑤ Output voltage
- ⑥ Optional
- Y2: Output voltage adjustable (+10%, -5%)

| MODEL                 | MGS10053R3 | MGS100505 | MGS100512 | MGS100515 | MGS10123R3 | MGS101205 | MGS101212 | MGS101215 |     |
|-----------------------|------------|-----------|-----------|-----------|------------|-----------|-----------|-----------|-----|
| MAX OUTPUT WATTAGE[W] | 8.58       | 10.0      | 10.8      | 10.5      | 8.58       | 10.0      | 10.8      | 10.5      |     |
| DC OUTPUT             | VOLTAGE[V] | 3.3       | 5         | 12        | 15         | 3.3       | 5         | 12        | 15  |
|                       | CURRENT[A] | 2.6       | 2.0       | 0.9       | 0.7        | 2.6       | 2.0       | 0.9       | 0.7 |

## SPECIFICATIONS

|                               | MODEL                          | MGS10053R3   | MGS100505     | MGS100512     | MGS100515   | MGS10123R3                              | MGS101205     | MGS101212     | MGS101215 |        |
|-------------------------------|--------------------------------|--|---------------|---------------|-------------|---|---------------|---------------|-----------|--------|
| INPUT                         | VOLTAGE[V]                     | DC4.5 - 9 (Surge voltage 12.5V, 100ms max)           |               |               |             | DC9 - 18 (Surge voltage 25V, 100ms max) |               |               |           |        |
|                               | CURRENT[A]                     | *1 2.02typ   | 2.30typ       | 2.46typ       | 2.39typ     | 0.83typ                                 | 0.94typ       | 1.02typ       | 0.99typ   |        |
|                               | EFFICIENCY[%]                  | *1 85typ   | 87typ         | 88typ         | 88typ       | 87typ                                   | 89typ         | 89typ         | 89typ     |        |
| OUTPUT                        | VOLTAGE[V]                     | 3.3  | 5             | 12            | 15          | 3.3                                     | 5             | 12            | 15        |        |
|                               | CURRENT[A]                     | 2.6  | 2.0           | 0.9           | 0.7         | 2.6                                     | 2.0           | 0.9           | 0.7       |        |
|                               | LINE REGULATION[mV]            | 20max  | 20max         | 48max         | 60max       | 20max                                   | 20max         | 48max         | 60max     |        |
|                               | LOAD REGULATION[mV]            | 20max  | 20max         | 48max         | 60max       | 20max                                   | 20max         | 48max         | 60max     |        |
|                               | RIPPLE[mVp-p]                  | lo=30% -   | 75max         | 75max         | 100max      | 100max                                  | 75max         | 75max         | 100max    | 100max |
|                               |                                | lo=0 - 30%   | 225max        | 225max        | 300max      | 300max                                  | 225max        | 225max        | 300max    | 300max |
|                               | RIPPLE NOISE[mVp-p]            | lo=30% -   | 120max        | 120max        | 150max      | 150max                                  | 120max        | 120max        | 150max    | 150max |
|                               |                                | lo=0 - 30%   | 300max        | 300max        | 400max      | 400max                                  | 300max        | 300max        | 400max    | 400max |
|                               | TEMPERATURE REGULATION[mV]     | -20 to +50°C   | 50max         | 50max         | 150max      | 180max                                  | 50max         | 50max         | 150max    | 180max |
|                               |                                | -40 to +50°C   | 80max         | 80max         | 240max      | 290max                                  | 80max         | 80max         | 240max    | 290max |
| DRIFT[mV]                     | *3 20max                       | 20max  | 48max         | 60max         | 20max       | 20max                                   | 48max         | 60max         |           |        |
| START-UP TIME[ms]             | 30max (Minimum input, lo=100%) |  |               |               |             |   |               |               |           |        |
| OUTPUT VOLTAGE SETTING[V]     | 3.21 - 3.42                    | 4.90 - 5.21  | 11.64 - 12.36 | 14.55 - 15.45 | 3.21 - 3.42 | 4.90 - 5.21                             | 11.64 - 12.36 | 14.55 - 15.45 |           |        |
| PROTECTION CIRCUIT AND OTHERS | OVERCURRENT PROTECTION         | Works over 105% of rating and recovers automatically |               |               |             |   |               |               |           |        |
|                               | REMOTE ON/OFF                  | Provided (Negative logic L : ON, H : OFF)            |               |               |             |   |               |               |           |        |

| MODEL                 | MGS10243R3 | MGS102405 | MGS102412 | MGS102415 | MGS10483R3 | MGS104805 | MGS104812 | MGS104815 |     |
|-----------------------|------------|-----------|-----------|-----------|------------|-----------|-----------|-----------|-----|
| MAX OUTPUT WATTAGE[W] | 8.58       | 10.0      | 10.8      | 10.5      | 8.58       | 10.0      | 10.8      | 10.5      |     |
| DC OUTPUT             | VOLTAGE[V] | *1 3.3    | 5         | 12        | 15         | 3.3       | 5         | 12        | 15  |
|                       | CURRENT[A] | 2.6       | 2.0       | 0.9       | 0.7        | 2.6       | 2.0       | 0.9       | 0.7 |

## SPECIFICATIONS

|                               | MODEL                          | MGS10243R3   | MGS102405     | MGS102412     | MGS102415   | MGS10483R3                                | MGS104805     | MGS104812     | MGS104815 |        |
|-------------------------------|--------------------------------|--|---------------|---------------|-------------|---|---------------|---------------|-----------|--------|
| INPUT                         | VOLTAGE[V]                     | DC18 - 36 (Surge voltage 50V, 100ms max)             |               |               |             | DC36 - 76 (Surge voltage 100V, 100ms max) |               |               |           |        |
|                               | CURRENT[A]                     | *1 0.42typ   | 0.47typ       | 0.50typ       | 0.49typ     | 0.21typ                                   | 0.24typ       | 0.25typ       | 0.25typ   |        |
|                               | EFFICIENCY[%]                  | *1 87typ   | 89typ         | 90typ         | 90typ       | 87typ                                     | 89typ         | 90typ         | 90typ     |        |
| OUTPUT                        | VOLTAGE[V]                     | 3.3  | 5             | 12            | 15          | 3.3                                       | 5             | 12            | 15        |        |
|                               | CURRENT[A]                     | 2.6  | 2.0           | 0.9           | 0.7         | 2.6                                       | 2.0           | 0.9           | 0.7       |        |
|                               | LINE REGULATION[mV]            | 20max  | 20max         | 48max         | 60max       | 20max                                     | 20max         | 48max         | 60max     |        |
|                               | LOAD REGULATION[mV]            | 20max  | 20max         | 48max         | 60max       | 20max                                     | 20max         | 48max         | 60max     |        |
|                               | RIPPLE[mVp-p]                  | lo=30% -   | 75max         | 75max         | 100max      | 100max                                    | 75max         | 75max         | 100max    | 100max |
|                               |                                | lo=0 - 30%   | 225max        | 225max        | 300max      | 300max                                    | 225max        | 225max        | 300max    | 300max |
|                               | RIPPLE NOISE[mVp-p]            | lo=30% -   | 120max        | 120max        | 150max      | 150max                                    | 120max        | 120max        | 150max    | 150max |
|                               |                                | lo=0 - 30%   | 300max        | 300max        | 400max      | 400max                                    | 300max        | 300max        | 400max    | 400max |
|                               | TEMPERATURE REGULATION[mV]     | -20 to +50°C   | 50max         | 50max         | 150max      | 180max                                    | 50max         | 50max         | 150max    | 180max |
|                               |                                | -40 to +50°C   | 80max         | 80max         | 240max      | 290max                                    | 80max         | 80max         | 240max    | 290max |
| DRIFT[mV]                     | *3 20max                       | 20max  | 48max         | 60max         | 20max       | 20max                                     | 48max         | 60max         |           |        |
| START-UP TIME[ms]             | 30max (Minimum input, lo=100%) |  |               |               |             |   |               |               |           |        |
| OUTPUT VOLTAGE SETTING[V]     | 3.21 - 3.42                    | 4.90 - 5.21  | 11.64 - 12.36 | 14.55 - 15.45 | 3.21 - 3.42 | 4.90 - 5.21                               | 11.64 - 12.36 | 14.55 - 15.45 |           |        |
| PROTECTION CIRCUIT AND OTHERS | OVERCURRENT PROTECTION         | Works over 105% of rating and recovers automatically |               |               |             |   |               |               |           |        |
|                               | REMOTE ON/OFF                  | Provided (Negative logic L : ON, H : OFF)            |               |               |             |   |               |               |           |        |

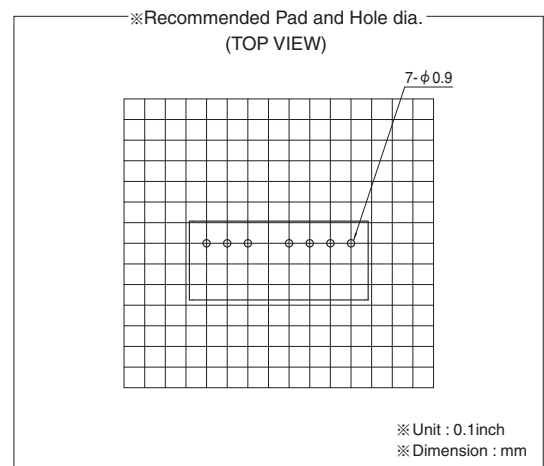
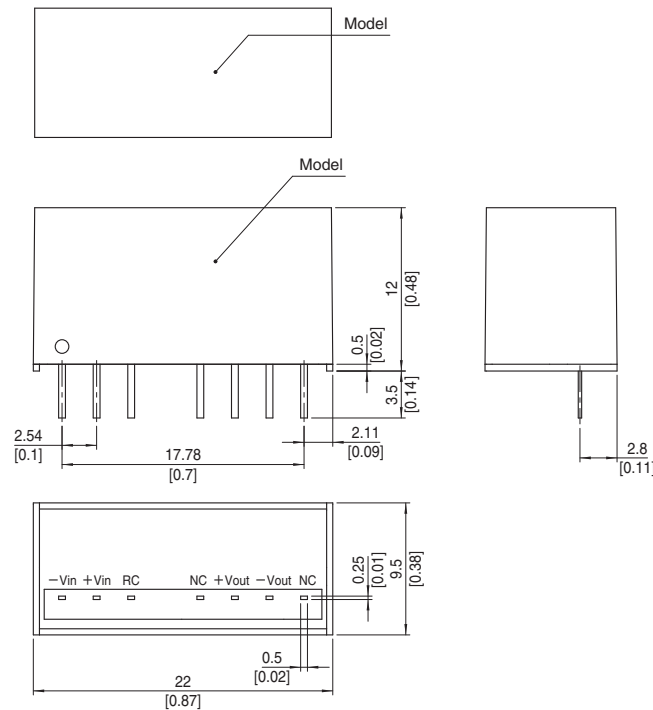


## GENERAL SPECIFICATIONS

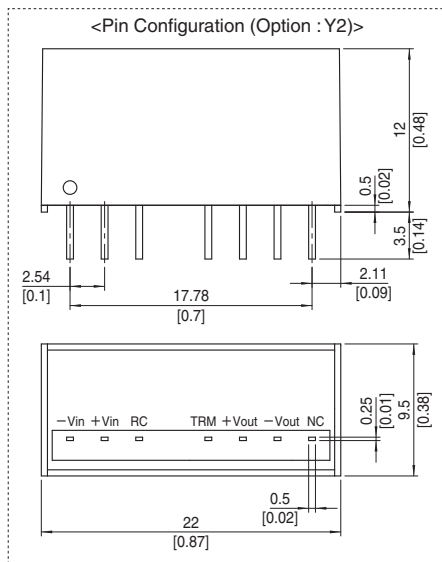
|                    |   |  |
|--------------------|---|--|
| <b>ISOLATION</b>   | <b>INPUT-OUTPUT</b>                         | DC1,500V or AC1,000V 1minute, Cutoff current=10mA, DC500V 1,000MΩ min (20±15°C)            |
| <b>ENVIRONMENT</b> | <b>OPERATING TEMP., HUMID. AND ALTITUDE</b> | -40 to +85°C, 20 to 95%RH (Non condensing) (Required derating), 5,000m (16,400feet) max    |
|                    | <b>STORAGE TEMP., HUMID. AND ALTITUDE</b>   | -40 to +100°C, 20 to 95%RH (Non condensing), 9,000m (30,000feet) max                       |
|                    | <b>VIBRATION</b>                            | 10 - 55Hz 98.0m/s <sup>2</sup> (10G), 3minute period, 60minutes each along X, Y and Z axis |
|                    | <b>IMPACT</b>                               | 490.3m/s <sup>2</sup> (50G) 11ms, once each along X, Y and Z axis                          |
| <b>SAFETY</b>      | <b>AGENCY APPROVALS</b>                     | UL60950-1, C-UL, EN60950-1   |
| <b>OTHERS</b>      | <b>CASE SIZE/WEIGHT</b>                     | 22.0×12.0×9.5mm [0.87×0.48×0.38 inches] (W×H×D) / 7g max                                   |
|                    | <b>COOLING METHOD</b>                       | Convection/Forced air  |

- \*1 Rated input 5V, 12V, 24V or 48V DC I<sub>o</sub>=100%
- \*2 Ripple and ripple noise is measured by using test board with ceramic capacitor 1μF at 50mm from output pins.
- \*3 Drift is the DC output accuracy for eight hours period after a half-hour warm-up at 25°C.
- \* Parallel operation with other model is not possible.
- \* MGW10xx12/MGW10xx15 is available as single output, +24V/+30V

### External view



- ※ Tolerance ±0.5 [±0.02]
- ※ Dimensions in mm, [ ] = inches
- ※ Pin terminal material : Copper
- ※ Planting treatment of terminal : Lead free plating
- ※ Case material : PBT
- ※ Weight 7g max



# MGS15

MG S 15 24 05 - □

① ② ③ ④ ⑤ ⑥



- ① Series name
- ② Single output
- ③ Output wattage
- ④ Input voltage
- ⑤ Output voltage
- ⑥ Optional
- G : Capacitor between Input and Output is removed.
- R : with Remote ON/OFF (Positive logic control)

| MODEL                 | MGS15123R3    | MGS151205 | MGS151212 | MGS151215 | MGS15243R3 | MGS152405 | MGS152412 | MGS152415 |    |
|-----------------------|---------------|-----------|-----------|-----------|------------|-----------|-----------|-----------|----|
| MAX OUTPUT WATTAGE[W] | 13.2          | 15        | 15.6      | 15        | 13.2       | 15        | 15.6      | 15        |    |
| DC OUTPUT             | VOLTAGE[V] *1 | 3.3       | 5         | 12        | 15         | 3.3       | 5         | 12        | 15 |
|                       | CURRENT[A]    | 4         | 3         | 1.3       | 1          | 4         | 3         | 1.3       | 1  |

## SPECIFICATIONS

|                                 | MODEL   | MGS15123R3   | MGS151205       | MGS151212       | MGS151215     | MGS15243R3    | MGS152405       | MGS152412       | MGS152415 |        |
|---------------------------------|---|--|-----------------|-----------------|---------------|---------------|-----------------|-----------------|-----------|--------|
| INPUT                           | VOLTAGE[V]  | DC9 - 18   |                 |                 |               | DC18 - 36     |                 |                 |           |        |
|                                 | CURRENT[A] *2   | 1.28typ  | 1.44typ         | 1.49typ         | 1.42typ       | 0.63typ       | 0.70typ         | 0.73typ         | 0.70typ   |        |
|                                 | EFFICIENCY[%] *2  | 86typ  | 87typ           | 87typ           | 88typ         | 87typ         | 89typ           | 89typ           | 89typ     |        |
| OUTPUT                          | VOLTAGE[V]  | 3.3  | 5               | 12              | 15            | 3.3           | 5               | 12              | 15        |        |
|                                 | CURRENT[A]  | 4  | 3               | 1.3             | 1             | 4             | 3               | 1.3             | 1         |        |
|                                 | LINE REGULATION[mV]   | 13.2max  | 20max           | 48max           | 60max         | 13.2max       | 20max           | 48max           | 60max     |        |
|                                 | LOAD REGULATION[mV]   | 13.2max  | 20max           | 48max           | 60max         | 13.2max       | 20max           | 48max           | 60max     |        |
|                                 | RIPPLE[mVp-p] *3  | -20 to +60°C   | 75max           | 75max           | 100max        | 100max        | 75max           | 75max           | 100max    | 100max |
|                                 |   | -40 to -20°C   | 100max          | 100max          | 120max        | 120max        | 100max          | 100max          | 120max    | 120max |
|                                 | RIPPLE NOISE[mVp-p] *3  | -20 to +60°C   | 75max           | 75max           | 100max        | 100max        | 75max           | 75max           | 100max    | 100max |
|                                 |   | -40 to -20°C   | 150max          | 150max          | 150max        | 150max        | 150max          | 150max          | 150max    | 150max |
|                                 | TEMPERATURE REGULATION[mV]  | -20 to +60°C   | 50max           | 50max           | 150max        | 180max        | 50max           | 50max           | 150max    | 180max |
|                                 |   | -40 to +60°C   | 80max           | 80max           | 240max        | 290max        | 80max           | 80max           | 240max    | 290max |
|                                 | DRIFT[mV] *4  | 20max  | 20max           | 48max           | 60max         | 20max         | 20max           | 48max           | 60max     |        |
| START-UP TIME[ms]               | 30max (Minimum input, Io=100%)  |  |                 |                 |               |               |                 |                 |           |        |
| OUTPUT VOLTAGE ADJUSTMENT RANGE | Fixed (TRM pin open) Available to adjust ±10% by external variable resistor |  |                 |                 |               |               |                 |                 |           |        |
| OUTPUT VOLTAGE SETTING[V]*5     | 3.296 - 3.404   | 4.975 - 5.137  | 11.857 - 12.243 | 14.839 - 15.321 | 3.296 - 3.404 | 4.975 - 5.137 | 11.857 - 12.243 | 14.839 - 15.321 |           |        |
| PROTECTION CIRCUIT AND OTHERS   | OVERCURRENT PROTECTION  | Works over 105% of rating and recovers automatically |                 |                 |               |               |                 |                 |           |        |
|                                 | REMOTE ON/OFF   | Provided (Negative logic L:ON, H:OFF)                |                 |                 |               |               |                 |                 |           |        |

| MODEL                 | MGS15483R3    | MGS154805 | MGS154812 | MGS154815 |    |
|-----------------------|---------------|-----------|-----------|-----------|----|
| MAX OUTPUT WATTAGE[W] | 13.2          | 15        | 15.6      | 15        |    |
| DC OUTPUT             | VOLTAGE[V] *1 | 3.3       | 5         | 12        | 15 |
|                       | CURRENT[A]    | 4         | 3         | 1.3       | 1  |

## SPECIFICATIONS

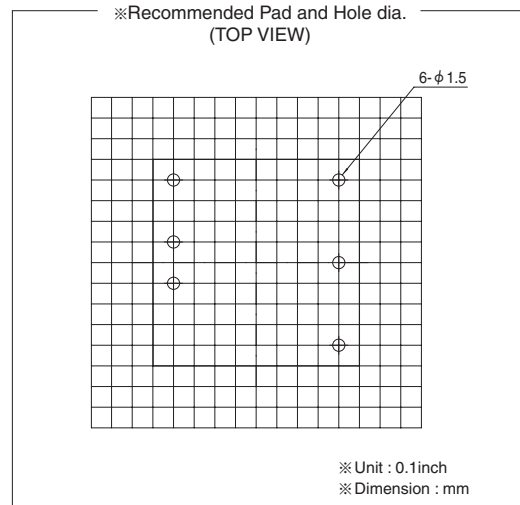
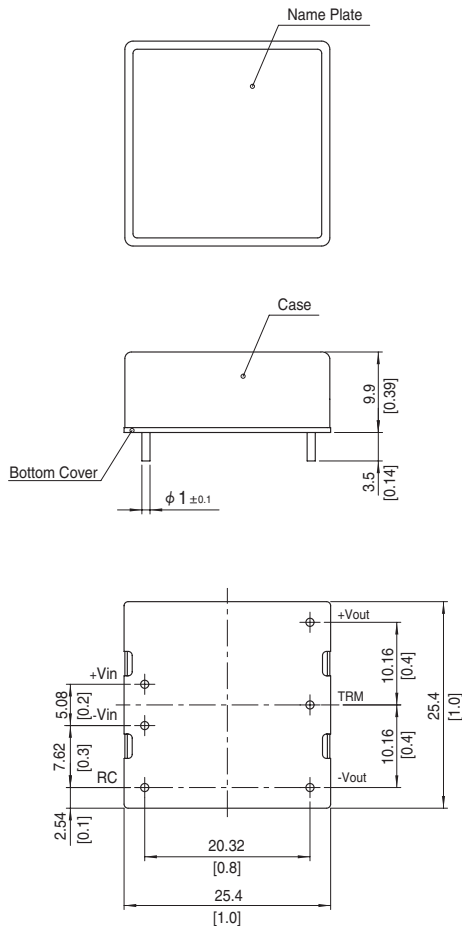
|                                 | MODEL   | MGS15483R3   | MGS154805       | MGS154812       | MGS154815 |        |
|---------------------------------|---|--|-----------------|-----------------|-----------|--------|
| INPUT                           | VOLTAGE[V]  | DC36 - 76  |                 |                 |           |        |
|                                 | CURRENT[A] *2                                       | 0.32typ  | 0.35typ         | 0.36typ         | 0.35typ   |        |
|                                 | EFFICIENCY[%] *2                                    | 87typ  | 89typ           | 90typ           | 90typ     |        |
| OUTPUT                          | VOLTAGE[V]  | 3.3  | 5               | 12              | 15        |        |
|                                 | CURRENT[A]  | 4  | 3               | 1.3             | 1         |        |
|                                 | LINE REGULATION[mV]                                 | 13.2max  | 20max           | 48max           | 60max     |        |
|                                 | LOAD REGULATION[mV]                                 | 13.2max  | 20max           | 48max           | 60max     |        |
|                                 | RIPPLE[mVp-p] *3                                    | -20 to +60°C   | 75max           | 75max           | 100max    | 100max |
|                                 |   | -40 to -20°C   | 100max          | 100max          | 120max    | 120max |
|                                 | RIPPLE NOISE[mVp-p] *3                              | -20 to +60°C   | 75max           | 75max           | 100max    | 100max |
|                                 |   | -40 to -20°C   | 150max          | 150max          | 150max    | 150max |
|                                 | TEMPERATURE REGULATION[mV]                          | -20 to +60°C   | 50max           | 50max           | 150max    | 180max |
|                                 |   | -40 to +60°C   | 80max           | 80max           | 240max    | 290max |
|                                 | DRIFT[mV] *4  | 20max  | 20max           | 48max           | 60max     |        |
| START-UP TIME[ms]               | 30max (Minimum input, Io=100%)                      |  |                 |                 |           |        |
| OUTPUT VOLTAGE ADJUSTMENT RANGE | Fixed (TRM pin open) ±10% adjustable by external VR |  |                 |                 |           |        |
| OUTPUT VOLTAGE SETTING[V]*5     | 3.296 - 3.404                                       | 4.975 - 5.137  | 11.857 - 12.243 | 14.839 - 15.321 |           |        |
| PROTECTION CIRCUIT AND OTHERS   | OVERCURRENT PROTECTION                              | Works over 105% of rating and recovers automatically |                 |                 |           |        |
|                                 | REMOTE ON/OFF                                       | Provided (Negative logic L:ON, H:OFF)                |                 |                 |           |        |

### GENERAL SPECIFICATIONS

|             |                                      |  |
|-------------|--------------------------------------|--|
| ISOLATION   | INPUT-OUTPUT                         | DC1,500V 1minute, Cutoff current = 10mA, DC500V 1,000MΩ min (20±15°C)                        |
|             | INPUT-CASE                           | DC1,000V 1minute, Cutoff current = 10mA, DC500V 1,000MΩ min (20±15°C)                        |
|             | OUTPUT-CASE                          | DC1,000V 1minute, Cutoff current = 10mA, DC500V 1,000MΩ min (20±15°C)                        |
| ENVIRONMENT | OPERATING TEMP., HUMID. AND ALTITUDE | -40 to +85°C, 20 to 95%RH (Non condensing) (Required Derating), 3,000m (10,000feet) max      |
|             | STORAGE TEMP., HUMID. AND ALTITUDE   | -40 to +100°C, 20 to 95%RH (Non condensing), 9,000m (30,000feet) max                         |
|             | VIBRATION                            | 10 - 55Hz, 98.0m/s <sup>2</sup> (10G), 3minutes period, 60minutes each along X, Y and Z axis |
|             | IMPACT                               | 490.3m/s <sup>2</sup> (50G), 11ms, once each along X, Y and Z axis                           |
| SAFETY      | AGENCY APPROVALS                     | UL60950-1, C-UL, EN60950-1   |
| OTHERS      | CASE SIZE/WEIGHT                     | 25.4 X 9.9 X 25.4mm [1 X 0.39 X 1 inches] (W X H X D) / 20g max                              |
|             | COOLING METHOD                       | Convection/Forced air  |

- \*1 MGW15xx05/MGW15xx12/MGW15xx15 is available as single output, +10V/+24V/+30V
- \*2 Rated input 12V, 24V or 48V DC Io=100%
- \*3 Ripple and Ripple Noise is measured by using test board with ceramic capacitor 22μF at 50mm from output pins. (20MHz Oscilloscope)
- \*4 Drift is the DC output accuracy for eight hours period after a half-hour warm-up at 25°C.
- \*5 Rated input voltage (DC12V, DC24V, DC48V), rated output wattage, ambient temperature at 25°C.
- \* Parallel operation with other model is not possible.

### External view



- ※ Tolerance ±0.5 [±0.02]
- ※ Dimensions in mm, [ ]=inches
- ※ Pin terminal material : Copper
- ※ Plating treatment of terminal : Lead free plating
- ※ Case material : Brass
- ※ Plating treatment of case : Nickel plating
- ※ Bottom Cover : FR4 (t=0.6) [t=0.024]
- ※ Please keep enough creepage distance with the pattern on PCB and other components.
- ※ Weight 20g max

# MGS30

MG S 30 24 05 - □

① ② ③ ④ ⑤ ⑥



- ① Series name
- ② Single output
- ③ Output wattage
- ④ Input voltage
- ⑤ Output voltage
- ⑥ Optional
- G : Capacitor between Input and Output is removed.
- R : with Remote ON/OFF (Positive logic control)

| MODEL                 | MGS30123R3    | MGS301205 | MGS301212 | MGS301215 | MGS30243R3 | MGS302405 | MGS302412 | MGS302415 |
|-----------------------|---------------|-----------|-----------|-----------|------------|-----------|-----------|-----------|
| MAX OUTPUT WATTAGE[W] | 26.4          | 30        | 30        | 30        | 26.4       | 30        | 30        | 30        |
| DC OUTPUT             | VOLTAGE[V] *1 | 3.3       | 5         | 12        | 15         | 3.3       | 5         | 12        |
|                       | CURRENT[A]    | 8         | 6         | 2.5       | 2          | 8         | 6         | 2.5       |

## SPECIFICATIONS

|                                 | MODEL   | MGS30123R3   | MGS301205       | MGS301212       | MGS301215     | MGS30243R3    | MGS302405       | MGS302412       | MGS302415 |        |
|---------------------------------|---|--|-----------------|-----------------|---------------|---------------|-----------------|-----------------|-----------|--------|
| INPUT                           | VOLTAGE[V]  | DC9 - 18   |                 |                 |               | DC18 - 36     |                 |                 |           |        |
|                                 | CURRENT[A] *2                                       | 2.45typ  | 2.75typ         | 2.78typ         | 2.78typ       | 1.21typ       | 1.36typ         | 1.36typ         | 1.36typ   |        |
|                                 | EFFICIENCY[%] *2                                    | 90typ  | 91typ           | 90typ           | 90typ         | 91typ         | 92typ           | 92typ           | 92typ     |        |
| OUTPUT                          | VOLTAGE[V]  | 3.3  | 5               | 12              | 15            | 3.3           | 5               | 12              | 15        |        |
|                                 | CURRENT[A]  | 8  | 6               | 2.5             | 2             | 8             | 6               | 2.5             | 2         |        |
|                                 | LINE REGULATION[mV]                                 | 13.2max  | 20max           | 48max           | 60max         | 13.2max       | 20max           | 48max           | 60max     |        |
|                                 | LOAD REGULATION[mV]                                 | 13.2max  | 20max           | 48max           | 60max         | 13.2max       | 20max           | 48max           | 60max     |        |
|                                 | RIPPLE[mVp-p]                                       | -20 to +60°C   | 75max           | 75max           | 100max        | 100max        | 75max           | 75max           | 100max    | 100max |
|                                 |   | *3 -40 to -20°C                                      | 100max          | 100max          | 120max        | 120max        | 100max          | 100max          | 120max    | 120max |
|                                 | RIPPLE NOISE[mVp-p]                                 | -20 to +60°C   | 75max           | 75max           | 100max        | 100max        | 75max           | 75max           | 100max    | 100max |
|                                 |   | *3 -40 to -20°C                                      | 150max          | 150max          | 150max        | 150max        | 150max          | 150max          | 150max    | 150max |
|                                 | TEMPERATURE REGULATION[mV]                          | -20 to +60°C   | 50max           | 50max           | 150max        | 180max        | 50max           | 50max           | 150max    | 180max |
|                                 |   | -40 to +60°C   | 80max           | 80max           | 240max        | 290max        | 80max           | 80max           | 240max    | 290max |
| DRIFT[mV] *4                    | 20max   | 20max  | 48max           | 60max           | 20max         | 20max         | 48max           | 60max           |           |        |
| START-UP TIME[ms]               | 30max (Minimum input, I <sub>o</sub> =100%)         |  |                 |                 |               |               |                 |                 |           |        |
| OUTPUT VOLTAGE ADJUSTMENT RANGE | Fixed (TRM pin open) ±10% adjustable by external VR |  |                 |                 |               |               |                 |                 |           |        |
| OUTPUT VOLTAGE SETTING[V]*5     | 3.296 - 3.404                                       | 4.975 - 5.137  | 11.857 - 12.243 | 14.839 - 15.321 | 3.296 - 3.404 | 4.975 - 5.137 | 11.857 - 12.243 | 14.839 - 15.321 |           |        |
| PROTECTION CIRCUIT AND OTHERS   | OVERCURRENT PROTECTION                              | Works over 105% of rating and recovers automatically |                 |                 |               |               |                 |                 |           |        |
|                                 | OVERVOLTAGE PROTECTION[V]                           | Works over 120 to 160% of rating                     |                 |                 |               |               |                 |                 |           |        |
|                                 | REMOTE ON/OFF                                       | Provided (Negative logic L:ON, H:OFF)                |                 |                 |               |               |                 |                 |           |        |

| MODEL                 | MGS30483R3    | MGS304805 | MGS304812 | MGS304815 |
|-----------------------|---------------|-----------|-----------|-----------|
| MAX OUTPUT WATTAGE[W] | 26.4          | 30        | 30        | 30        |
| DC OUTPUT             | VOLTAGE[V] *1 | 3.3       | 5         | 12        |
|                       | CURRENT[A]    | 8         | 6         | 2.5       |

## SPECIFICATIONS

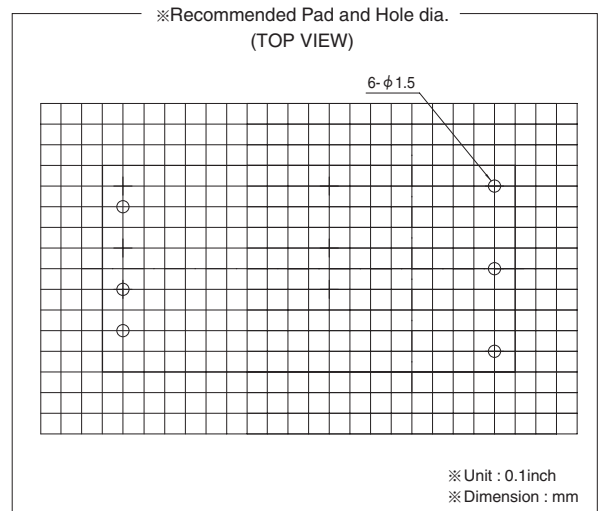
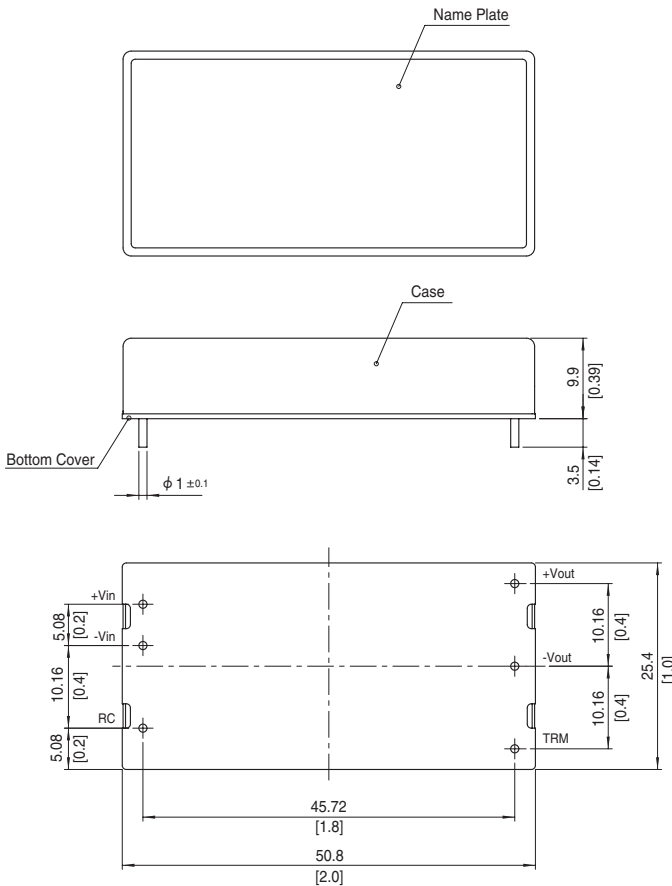
|                                 | MODEL   | MGS30483R3   | MGS304805       | MGS304812       | MGS304815 |        |
|---------------------------------|---|--|-----------------|-----------------|-----------|--------|
| INPUT                           | VOLTAGE[V]  | DC36 - 76  |                 |                 |           |        |
|                                 | CURRENT[A] *2                                       | 0.61typ  | 0.68typ         | 0.68typ         | 0.68typ   |        |
|                                 | EFFICIENCY[%] *2                                    | 91typ  | 92typ           | 92typ           | 92typ     |        |
| OUTPUT                          | VOLTAGE[V]  | 3.3  | 5               | 12              | 15        |        |
|                                 | CURRENT[A]  | 8  | 6               | 2.5             | 2         |        |
|                                 | LINE REGULATION[mV]                                 | 13.2max  | 20max           | 48max           | 60max     |        |
|                                 | LOAD REGULATION[mV]                                 | 13.2max  | 20max           | 48max           | 60max     |        |
|                                 | RIPPLE[mVp-p]                                       | -20 to +60°C   | 75max           | 75max           | 100max    | 100max |
|                                 |   | *3 -40 to -20°C                                      | 100max          | 100max          | 120max    | 120max |
|                                 | RIPPLE NOISE[mVp-p]                                 | -20 to +60°C   | 75max           | 75max           | 100max    | 100max |
|                                 |   | *3 -40 to -20°C                                      | 150max          | 150max          | 150max    | 150max |
|                                 | TEMPERATURE REGULATION[mV]                          | -20 to +60°C   | 50max           | 50max           | 150max    | 180max |
|                                 |   | -40 to +60°C   | 80max           | 80max           | 240max    | 290max |
| DRIFT[mV] *4                    | 20max   | 20max  | 48max           | 60max           |           |        |
| START-UP TIME[ms]               | 30max (Minimum input, I <sub>o</sub> =100%)         |  |                 |                 |           |        |
| OUTPUT VOLTAGE ADJUSTMENT RANGE | Fixed (TRM pin open) ±10% adjustable by external VR |  |                 |                 |           |        |
| OUTPUT VOLTAGE SETTING[V]*5     | 3.296 - 3.404                                       | 4.975 - 5.137  | 11.857 - 12.243 | 14.839 - 15.321 |           |        |
| PROTECTION CIRCUIT AND OTHERS   | OVERCURRENT PROTECTION                              | Works over 105% of rating and recovers automatically |                 |                 |           |        |
|                                 | OVERVOLTAGE PROTECTION[V]                           | Works over 120 to 160% of rating                     |                 |                 |           |        |
|                                 | REMOTE ON/OFF                                       | Provided (Negative logic L:ON, H:OFF)                |                 |                 |           |        |

**GENERAL SPECIFICATIONS**

|             |                                      |  |
|-------------|--------------------------------------|--|
| ISOLATION   | INPUT-OUTPUT                         | DC1,500V 1minute, Cutoff current = 10mA, DC500V 1,000MΩ min (20±15°C)                        |
|             | INPUT-CASE                           | DC1,000V 1minute, Cutoff current = 10mA, DC500V 1,000MΩ min (20±15°C)                        |
|             | OUTPUT-CASE                          | DC1,000V 1minute, Cutoff current = 10mA, DC500V 1,000MΩ min (20±15°C)                        |
| ENVIRONMENT | OPERATING TEMP., HUMID. AND ALTITUDE | -40 to +85°C, 20 to 95%RH (Non condensing) (Required Derating), 3,000m (10,000feet) max      |
|             | STORAGE TEMP., HUMID. AND ALTITUDE   | -40 to +100°C, 20 to 95%RH (Non condensing), 9,000m (30,000feet) max                         |
|             | VIBRATION                            | 10 - 55Hz, 98.0m/s <sup>2</sup> (10G), 3minutes period, 60minutes each along X, Y and Z axis |
|             | IMPACT                               | 490.3m/s <sup>2</sup> (50G), 11ms, once each along X, Y and Z axis                           |
| SAFETY      | AGENCY APPROVALS                     | UL60950-1, C-UL, EN60950-1   |
| OTHERS      | CASE SIZE/WEIGHT                     | 25.4 X 9.9 X 50.8mm [1 X 0.39 X 2 inches] (W X H X D) / 40g max                              |
|             | COOLING METHOD                       | Convection/Forced air  |

- \*1 MGW30xx05/MGW30xx12/MGW30xx15 is available as single output, +10V/+24V/+30V
- \*2 Rated input 12V, 24V or 48V DC I<sub>o</sub>=100%
- \*3 Ripple and Ripple Noise is measured by using test board with ceramic capacitor 22μF at 50mm from output pins. (20MHz Oscilloscope)
- \*4 Drift is the DC output accuracy for eight hours period after a half-hour warm-up at 25°C.
- \*5 Rated input voltage (DC12V, DC24V, DC48V), rated output wattage, ambient temperature at 25°C.
- \* Parallel operation with other model is not possible.

**External view**



- ※ Tolerance ±0.5 [±0.02]
- ※ Dimensions in mm, [ ]=inches
- ※ Pin terminal material : Copper
- ※ Plating treatment of terminal : Lead free plating
- ※ Case material : Brass
- ※ Plating treatment of case : Nickel plating
- ※ Bottom Cover : FR4 (t=0.6) [t=0.024]
- ※ Please keep enough creepage distance with the pattern on PCB and other components.
- ※ Weight 40g max