



Chipsmall Limited consists of a professional team with an average of over 10 year of expertise in the distribution of electronic components. Based in Hongkong, we have already established firm and mutual-benefit business relationships with customers from,Europe,America and south Asia,supplying obsolete and hard-to-find components to meet their specific needs.

With the principle of "Quality Parts,Customers Priority,Honest Operation,and Considerate Service",our business mainly focus on the distribution of electronic components. Line cards we deal with include Microchip,ALPS,ROHM,Xilinx,Pulse,ON,Everlight and Freescale. Main products comprise IC,Modules,Potentiometer,IC Socket,Relay,Connector.Our parts cover such applications as commercial,industrial, and automotives areas.

We are looking forward to setting up business relationship with you and hope to provide you with the best service and solution. Let us make a better world for our industry!



## Contact us

Tel: +86-755-8981 8866 Fax: +86-755-8427 6832

Email & Skype: info@chipsmall.com Web: www.chipsmall.com

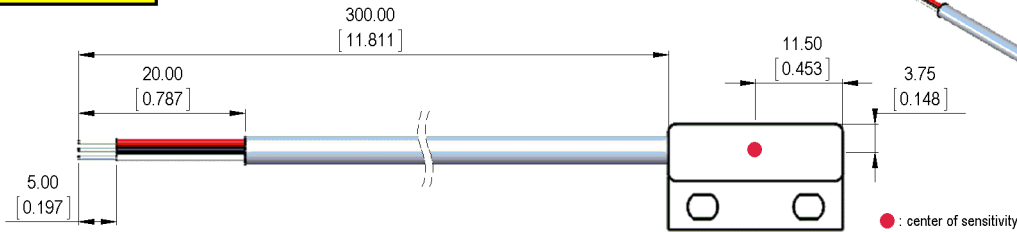
Address: A1208, Overseas Decoration Building, #122 Zhenhua RD., Futian, Shenzhen, China



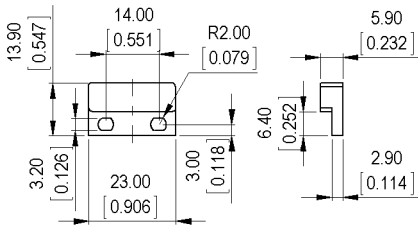


**Dimensions mm[inch]**  
 tolerances acc. to DIN ISO 2768-m  
 Toleranzen gem. DIN ISO 2768-m

**Isometric**  
 Scale 1:2  
 Maßstab 1:2



**Housing**

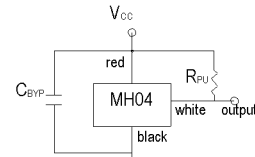


**Cable**  
 round cable UL/CSA LIYY AWG 26, grey  
 color of wires: red, black, white

**Terminals/Connector**

Ends tinned  
 red: V<sub>CC</sub>  
 black: Ground  
 white: Output

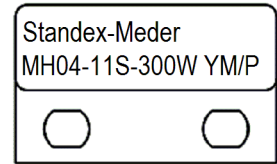
**Typical External Circuit**



Add external pull-up resistor (R<sub>PU</sub>) for sinking output between V<sub>CC</sub> and Output  
 Add external bypass capacitor (C<sub>BY</sub>) close to the sensor to reduce external noise as needed

**Marking**

according to EN60062/factory code  
 gem. EN60062/Fertigungsstätte



Magnetic properties	Conditions	Min	Typ	Max	Unit
Hall Type			Switch		
Operation			Unipolar		
Output On	T=25C and VDD=12V		35		Gauss
Output Off	T=25C and VDD=12V		25		Gauss
Hysteresis	T=25C and VDD=12V		10		Gauss

Technical data	Conditions	Min	Typ	Max	Unit
Supply voltage		3		24	VDC
Supply current				4	mA
Operating temperature range		-40		85	°C
Storage temperature		-60		105	°C

Cable specification	Conditions	Min	Typ	Max	Unit
Cable type			round cable		
Strand number			3		
Structure of strands			AWG 26 7x0,16		
Insulation single strands			PVC		
Strands color			red, black, white		
Insulation cable sheath			PVC		
Sheath color	DIN 47100		grey		
Outer diameter of a cable jacket			3.8		mm

General data	Conditions	Min	Typ	Max	Unit
Tightening torque	Screw M3 ISO 1207 Disk ISO 7089			0.5	Nm
Mounting advice		decreased switching distances when mounted near iron			
Mounting advice		magnetically conductive screws must not be used			
Case color		white			
Sealing compound		Polyurethan			
Remark		direct custom inquiries to sales@standexmeder.com			