



Chipsmall Limited consists of a professional team with an average of over 10 year of expertise in the distribution of electronic components. Based in Hongkong, we have already established firm and mutual-benefit business relationships with customers from,Europe,America and south Asia,supplying obsolete and hard-to-find components to meet their specific needs.

With the principle of “Quality Parts,Customers Priority,Honest Operation,and Considerate Service”,our business mainly focus on the distribution of electronic components. Line cards we deal with include Microchip,ALPS,ROHM,Xilinx,Pulse,ON,Everlight and Freescale. Main products comprise IC,Modules,Potentiometer,IC Socket,Relay,Connector.Our parts cover such applications as commercial,industrial, and automotives areas.

We are looking forward to setting up business relationship with you and hope to provide you with the best service and solution. Let us make a better world for our industry!



Contact us

Tel: +86-755-8981 8866 Fax: +86-755-8427 6832

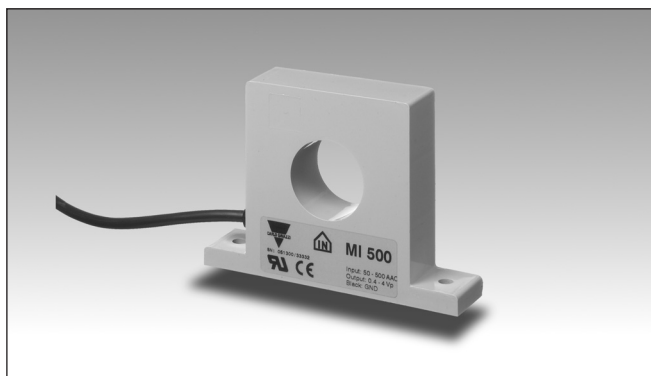
Email & Skype: info@chipsmall.com Web: www.chipsmall.com

Address: A1208, Overseas Decoration Building, #122 Zhenhua RD., Futian, Shenzhen, China



Monitoring Relays Current Transformer, 1-Phase AC Types MI 5, MI 20, MI 100, MI 500

CARLO GAVAZZI



- 1-phase current metering transformer for use with control relays types: DUA01, PUA01, DIB02, PIB02, DIC01, PIC01, DWA01, PWA01, DWB01, PWB01, DWB02, PWB02, DWB03, PWB03, S 180, H 479
- Measuring ranges:
 - MI 5: 0.5 - 5 AAC
 - MI 20: 2 - 20 AAC
 - MI 100: 10 - 100 AAC
 - MI 500: 50 - 500 AAC

Product Description

AC current transformers for 5, 20, 100, 500 AAC. Output voltage (0.4 - 4 V_p) is proportional to measured current.

Ordering Key

MI 500

Type _____
Input current _____

Type Selection

Input current	Type no.
5 AAC	MI 5
20 AAC	MI 20
100 AAC	MI 100
500 AAC	MI 500

Input Specifications

	MI 5	MI 20	MI 100	MI 500
Current range	0.5 - 5 AAC	2 - 20 AAC	10 - 100 AAC	50 - 500 AAC
Max. current (continuously)	20 AAC	50 AAC	250 AAC	750 AAC
Max. overload current (t = 30 s)	40 AAC	85 AAC	325 AAC	1000 AAC
Frequency range	40 Hz-1 kHz	40 Hz-1 kHz	40 Hz-1 kHz	40 Hz-1 kHz
Rated insulation voltage Input-output	1000 VAC _{rms}	1000 VAC _{rms}	1000 VAC _{rms}	1000 VAC _{rms}
Oversvoltage category	IV (IEC 60664)	IV (IEC 60664)	IV (IEC 60664)	IV (IEC 60664)
Dielectric strength Dielectric voltage Rated impulse withstand volt.	6 kVAC _{rms} 12 kV (1.2/50 μs)	6 kVAC _{rms} 12 kV (1.2/50 μs)	6 kVAC _{rms} 12 kV (1.2/50 μs)	6 kVAC _{rms} 12 kV (1.2/50 μs)
Power consumption	< 100 mW/5 A	< 100 mW/20 A	< 0.5 W/100 A	< 6 W/500 A

Output Specifications

	MI 5	MI 20	MI 100	MI 500
Output Voltage (T _A = 20°C, R _L = 9.5 kΩ)	0.4 - 4 V _p	0.4 - 4 V _p	0.4 - 4 V _p	0.4 - 4 V _p
Output impedance	< 700 Ω	< 200 Ω	< 40 Ω	< 10 Ω
Tolerance of output voltage @ rated input current	± 5%	± 5%	± 5%	± 5%
Temperature variation	± 0.1% per °C	± 0.1% per °C	± 0.1% per °C	± 0.1% per °C
Rated insulation voltage (cable)	250 VAC _{rms}	250 VAC _{rms}	250 VAC _{rms}	250 VAC _{rms}



General Specifications

Pollution degree		3 (IEC 60664)
Ambient temperature		- 20° to + 60°C (- 4° to + 140°F)
Housing		
Dimensions	MI 5, MI 20	52 x 45 x 16 mm
	MI 100, MI 500	95 x 67.5 x 20 mm
Material		ABS
Weight		
	MI 5, MI 20	70 g
	MI 100, MI 500	270 g
Connection cable		
	MI 5, MI 20	1 m, 2 x 0.25 mm ²
	MI 100, MI 500	2 m, 2 x 0.25 mm ²
Approval		UL
CE-marking		Yes

Mode of Operation

The metered conductor is drawn through the central hole of the current metering transformer. Drawing the conductor through the hole several times makes it possible to meter currents below the nominal range.

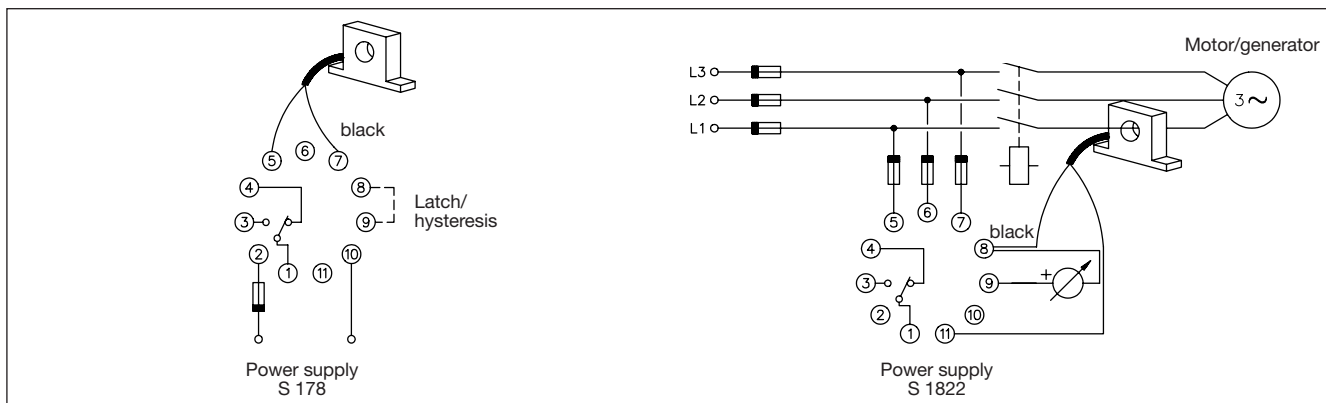
If the conductor is drawn through the central hole e.g. 5 times, the metering transformer will register 50 A when

the current in the conductor is 10 A.

In amplitude and phase the output voltage is proportional to the phase current metered.

4 V_p will then be equal to the rms-value of the nominal phase current.

Wiring Diagrams



Dimensions

