



Chipsmall Limited consists of a professional team with an average of over 10 year of expertise in the distribution of electronic components. Based in Hongkong, we have already established firm and mutual-benefit business relationships with customers from,Europe,America and south Asia,supplying obsolete and hard-to-find components to meet their specific needs.

With the principle of “Quality Parts,Customers Priority,Honest Operation,and Considerate Service”,our business mainly focus on the distribution of electronic components. Line cards we deal with include Microchip,ALPS,ROHM,Xilinx,Pulse,ON,Everlight and Freescale. Main products comprise IC,Modules,Potentiometer,IC Socket,Relay,Connector.Our parts cover such applications as commercial,industrial, and automotives areas.

We are looking forward to setting up business relationship with you and hope to provide you with the best service and solution. Let us make a better world for our industry!



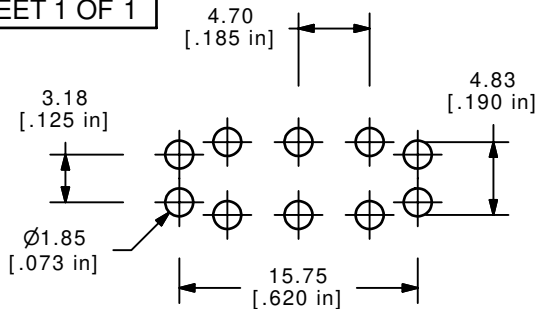
Contact us

Tel: +86-755-8981 8866 Fax: +86-755-8427 6832

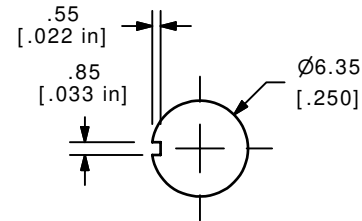
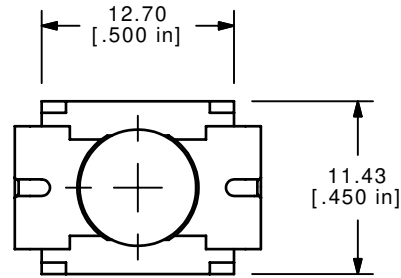
Email & Skype: info@chipsmall.com Web: www.chipsmall.com

Address: A1208, Overseas Decoration Building, #122 Zhenhua RD., Futian, Shenzhen, China

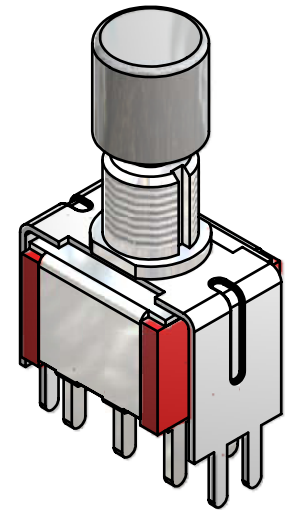




P.C.B. LAYOUT

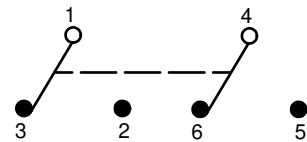


PANEL MOUNTING

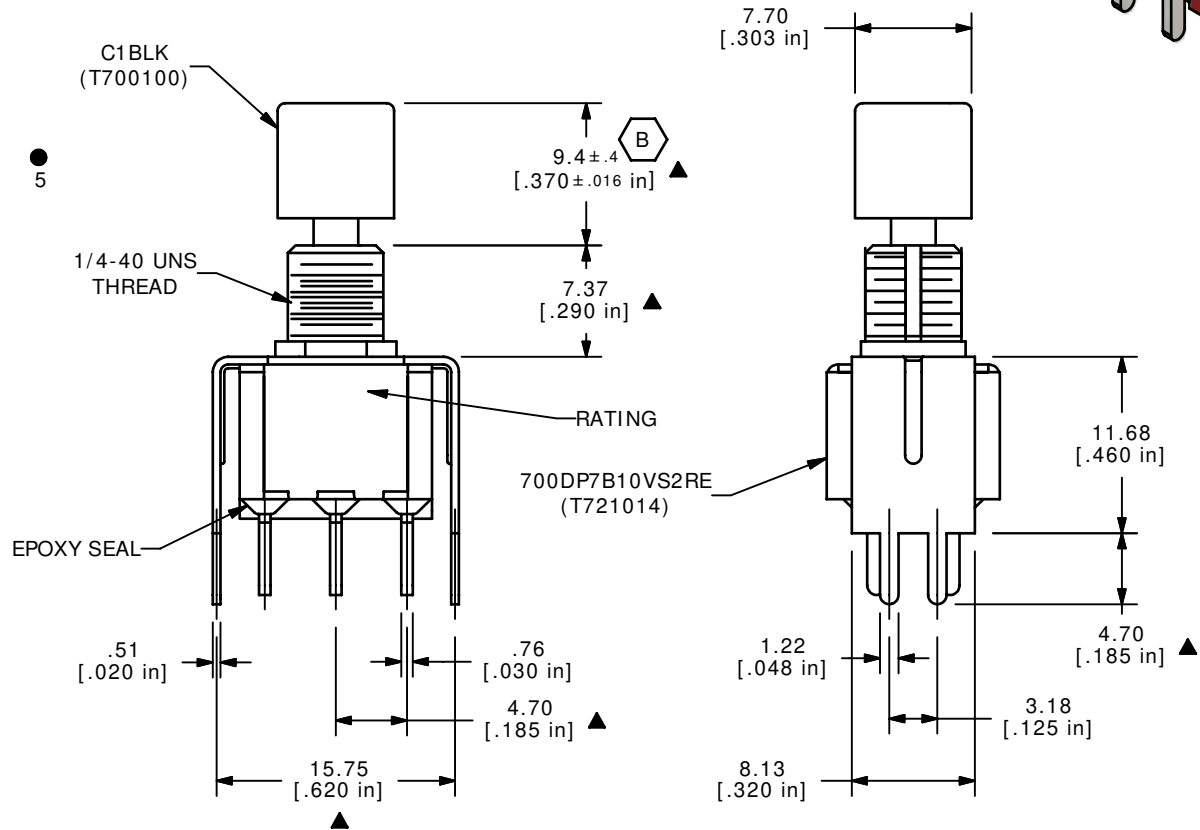


SWITCH FUNCTION	
POS. 1	POS. 2
ON	(ON)
1-3, 4-6	1-2, 4-5

() = MOMENTARY



CIRCUIT: DPDT



- NOTES;
1. DIMENSIONS IN MM [INCH]
 2. GENERAL TOLERANCE: $x.x = \pm 0.4$
 $x.xx = \pm 0.25$
 3. TERMINAL NUMBERS FOR REFERENCE ONLY
 4. PLATING MATERIAL: GOLD
 5. RATING: 0.4VA MAX. @ 20VAC or DC MAX.
 6. MECHANICAL LIFE: > 50,000 CYCLES
 7. INSULATION RESISTANCE: 1000M OHMS MIN.
 8. DIELECTRIC STRENGTH: 1,000V RMS @ sea level
 9. OPERATING TEMPERATURE: -30°C to 85°C
 10. ▲ DENOTES CRITICAL PARAMETER
 11. 2002/95/EC (ROHS) COMPLIANT

E-SWITCH®

B	16315	CHANGED "8.73" DIM. TO "9.4"	8/15/06	BO
A	16167	NEW PART RELEASE	6/21/06	CT
REV	PCR NO	DESCRIPTION	DATE	BY

TITLE 700DP7B10VS2REC1BLK				
SCALE	DATE	DR	DWG	REV
2:1	6/21/2006	CT	XT0137P	B

THE INFORMATION CONTAINED IN THIS DOCUMENT IS PROPRIETARY TO E-SWITCH AND IS NOT TO BE COPIED OR TRANSFERRED