



Chipsmall Limited consists of a professional team with an average of over 10 year of expertise in the distribution of electronic components. Based in Hongkong, we have already established firm and mutual-benefit business relationships with customers from,Europe,America and south Asia,supplying obsolete and hard-to-find components to meet their specific needs.

With the principle of “Quality Parts,Customers Priority,Honest Operation,and Considerate Service”,our business mainly focus on the distribution of electronic components. Line cards we deal with include Microchip,ALPS,ROHM,Xilinx,Pulse,ON,Everlight and Freescale. Main products comprise IC,Modules,Potentiometer,IC Socket,Relay,Connector.Our parts cover such applications as commercial,industrial, and automotives areas.

We are looking forward to setting up business relationship with you and hope to provide you with the best service and solution. Let us make a better world for our industry!



## Contact us

Tel: +86-755-8981 8866 Fax: +86-755-8427 6832

Email & Skype: info@chipsmall.com Web: www.chipsmall.com

Address: A1208, Overseas Decoration Building, #122 Zhenhua RD., Futian, Shenzhen, China



**Specification Status: Released**

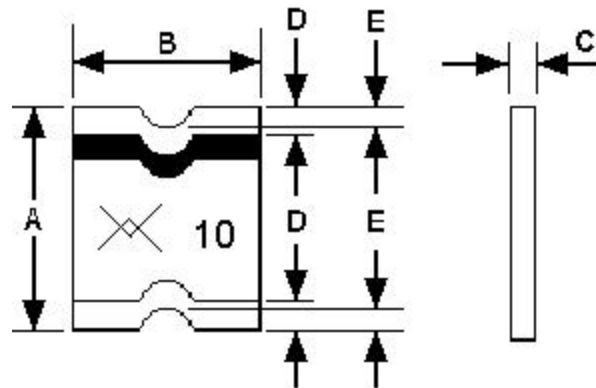
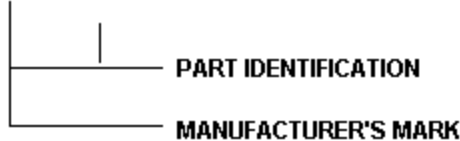
**Maximum Electrical Rating**

**Voltage: 30V<sub>DC</sub>**  
**Current: 10A**

**Notes:**

1. All terminations are tin/lead plated.
2. Devices can be wave soldered.
3. Drawing not to scale

**Marking:**



**TABLE I. DIMENSIONS:**

	A		B		C		D	E
	MIN	MAX	MIN	MAX	MIN	MAX	MIN	MIN
mm:	3.00	3.43	2.35	2.80	0.50	0.85	0.25	0.20
in.*	(0.118)	(0.135)	(0.092)	(0.111)	(0.019)	(0.034)	(0.010)	(0.008)

\*Rounded off approximation

**TABLE II. PERFORMANCE RATINGS:**

CURRENT RATINGS**						TIME TO TRIP **	RESISTANCE VALUES		TRIPPED-STATE POWER DISSIPATION**
AMPS AT 0°C		AMPS AT 20°C		AMPS AT 60°C		SECONDS AT 20°C, 0.50A MAX	OHMS AT 20°C		WATTS AT 20°C, 30V MAX
HOLD	TRIP	HOLD	TRIP	HOLD	TRIP		MIN	MAX*	
0.12	0.30	0.10	0.25	0.06	0.15	1.0	2.1	15.0	0.8

\*Maximum resistance is measured 1 hour after reflow.

\*\* Values specified were determined using PCB's with 0.030"X1.5 ounce copper traces.

**Reference Documents:**

PS300, E. N. SMD1.0x

**Precedence:**

This specification takes precedence over documents referenced herein.

**Effectivity:**

Reference documents shall be the issue in effect on the date of invitation for bid.

**CAUTION:**

Operation beyond the rated voltage or current may result in rupture, electrical arcing or flame.