



Chipsmall Limited consists of a professional team with an average of over 10 year of expertise in the distribution of electronic components. Based in Hongkong, we have already established firm and mutual-benefit business relationships with customers from,Europe,America and south Asia,supplying obsolete and hard-to-find components to meet their specific needs.

With the principle of “Quality Parts,Customers Priority,Honest Operation,and Considerate Service”,our business mainly focus on the distribution of electronic components. Line cards we deal with include Microchip,ALPS,ROHM,Xilinx,Pulse,ON,Everlight and Freescale. Main products comprise IC,Modules,Potentiometer,IC Socket,Relay,Connector.Our parts cover such applications as commercial,industrial, and automotives areas.

We are looking forward to setting up business relationship with you and hope to provide you with the best service and solution. Let us make a better world for our industry!



Contact us

Tel: +86-755-8981 8866 Fax: +86-755-8427 6832

Email & Skype: info@chipsmall.com Web: www.chipsmall.com

Address: A1208, Overseas Decoration Building, #122 Zhenhua RD., Futian, Shenzhen, China



mikroProg™ for STM32®

mikroProg™ is a fast USB programmer with hardware debugger support. Smart engineering allows mikroProg™ to support all STM32® ARM® Cortex™-M3 and Cortex™-M4 microcontrollers in a single programmer.



TO OUR VALUED CUSTOMERS

I want to express my thanks to you for being interested in our products and for having confidence in MikroElektronika.

The primary aim of our company is to design and produce high quality electronic products and to constantly improve the performance thereof in order to better suit your needs.



Nebojsa Matic
General Manager

Table of Contents

Introduction to mikroProg™	4	4. Connecting with a target device	12
Key features	5	5. Connector Pinout	13
1. Driver installation	6	6. mikroProg™ to 20-pin JTAG connector	14
step 1 - Start installation	7	7. Connection schematics examples	16
step 2 - Accept EULA	7	64-pin STM32® schematic	17
step 3 - Installing the drivers	8	100-pin STM32® schematic	18
step 4 - Finish installation	8	144-pin STM32® schematic	20
2. Connecting to a PC	9	176-pin STM32® schematic	21
3. mikroProg Suite™ for ARM® software	10		

Introduction to mikroProg™



mikroProg™ for STM32® is a fast programmer and hardware debugger. Smart engineering allows mikroProg™ to support all STM32® ARM® Cortex™-M3 and Cortex™-M4 devices in a single programmer! Outstanding performance, easy operation, elegant design and low price are its top features. It is supported in mikroElektronika, as well as in other ARM® compilers.

Key features

- **Hardware Debugging**
- No need for firmware update
- New microcontrollers supported via latest version of **mikroProg Suite™** for **ARM®** software

What you see

- 01 Flat cable
- 02 USB MINIB connector
- 03 DATA transfer indication LED
- 04 ACTIVE indication LED
- 05 LINK indication LED
- 06 POWER indication LED



1. Driver installation

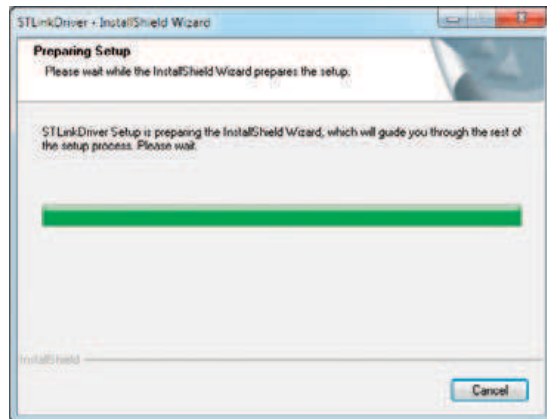
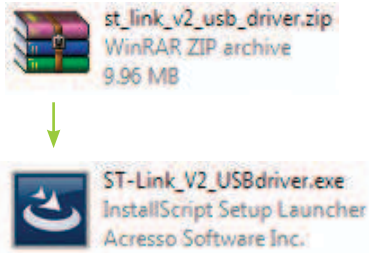
On-board mikroProg™ requires drivers in order to work. Drivers can be found on the link below:



http://www.mikroe.com/downloads/get/2053/mikroprog_sulte_for_arm_drivers.zip

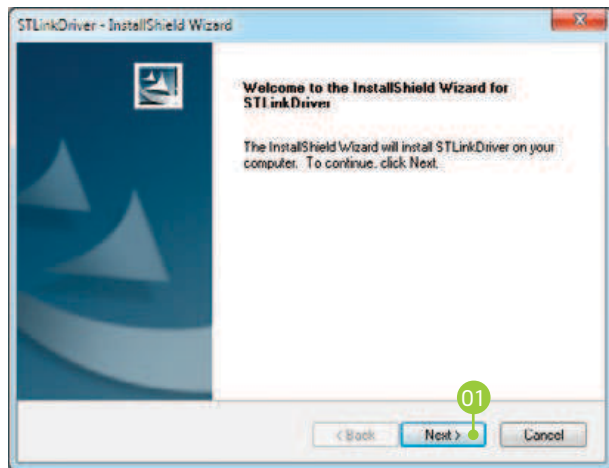
When you download the drivers, please extract files from the ZIP archive. Folder with extracted files contains folders with drivers for different operating systems. Depending on which operating system you use, choose adequate folder and open it.

When you locate the drivers, please extract the setup file from the ZIP archive. You should be able to locate the driver setup file. Double click the setup file to begin installation of the programmer drivers.



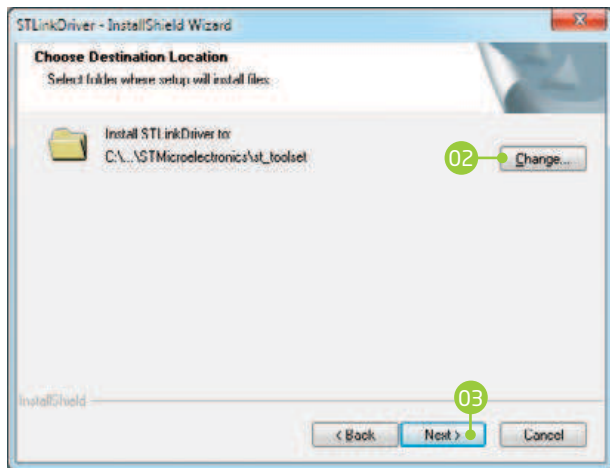
NOTE: Make sure to disconnect mikroProg™ before installing drivers.

step 1 - Start installation



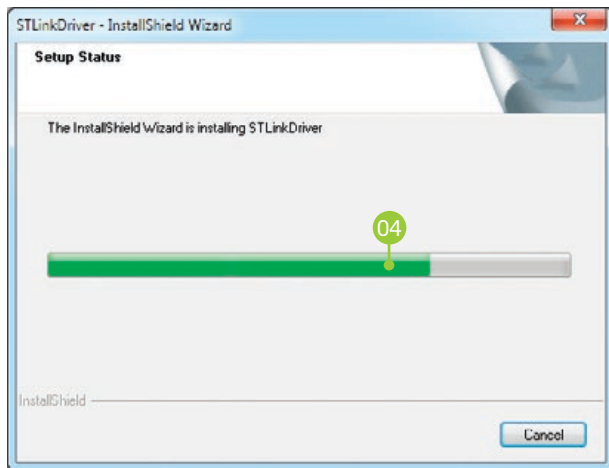
- 01 In welcome screen click the **Next >** button

step 2 - Accept EULA



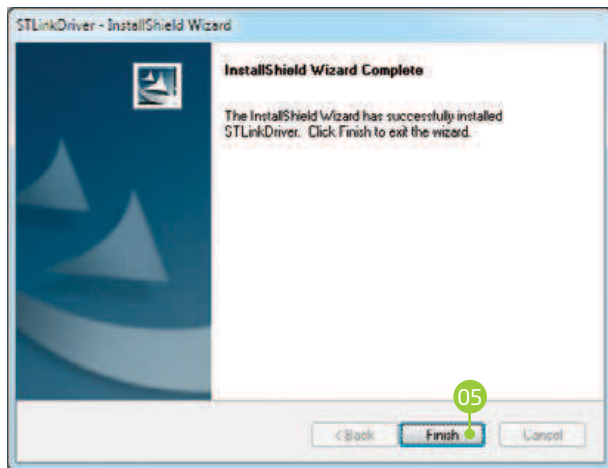
- 02 Click **Change button** to select new destination folder or use the suggested installation path
- 03 Click the **Next >** button

step 3 - Installing the drivers



04 Drivers are installed automatically

step 4 - Finish installation



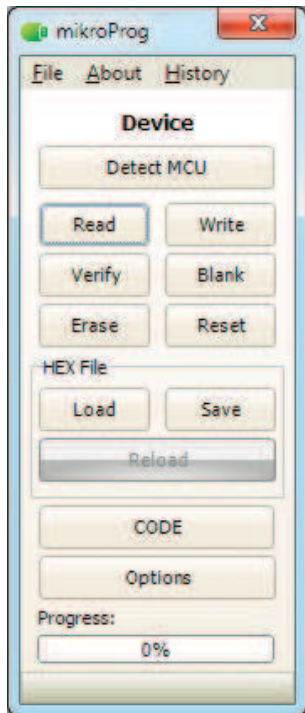
05 Click the **Finish** button to end installation process

2. Connecting to a PC



After driver installation is complete, you can connect the programmer with your PC using USB cable provided with the package. Green **POWER LED** should turn ON, indicating the presence of power supply. Amber-colored **LINK LED** will turn ON when link between mikroProg™ for STM32® and PC is established. Link can be established only when correct drivers are installed on your PC.

3. mikroProg Suite™ for ARM® software



mikroProg™ for STM32® programmer requires special programming software called mikroProg Suite™ for ARM®. This software is used for programming all of STM32® ARM® Cortex™-M3 and Cortex™-M4 microcontroller families. It features intuitive interface and SingleClick™ programming technology. Software installation is available on following link:



http://www.mikroe.com/downloads/get/1809/mikroprog_suite_for_arm.zip

After downloading, extract the package and double click the executable setup file to start installation.

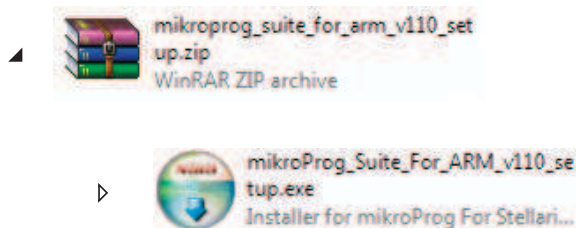
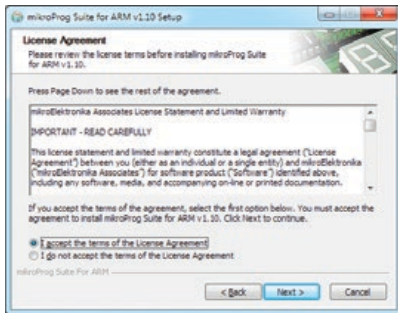


Figure 3-1:
mikroProg Suite™ for ARM®
window

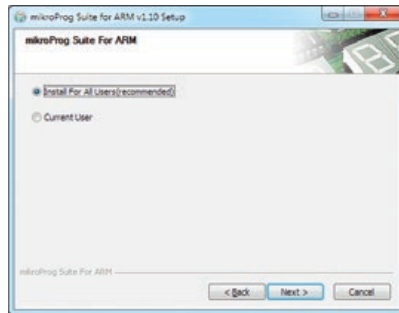
Software installation wizard



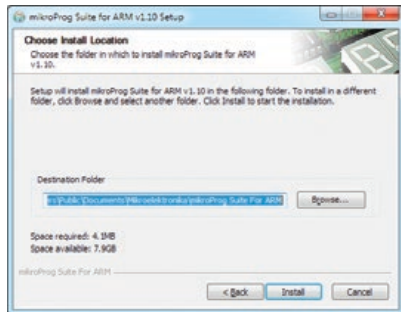
01 Start Installation



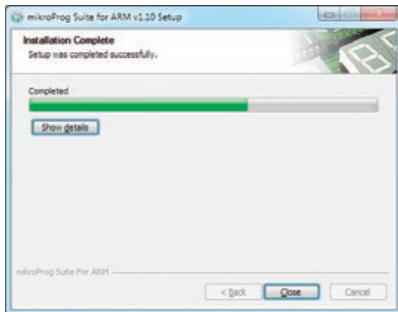
02 Accept EULA and continue



03 Install for All users or Current user



04 Choose destination folder



05 Installation in progress



06 Finish installation

4. Connecting with a target device

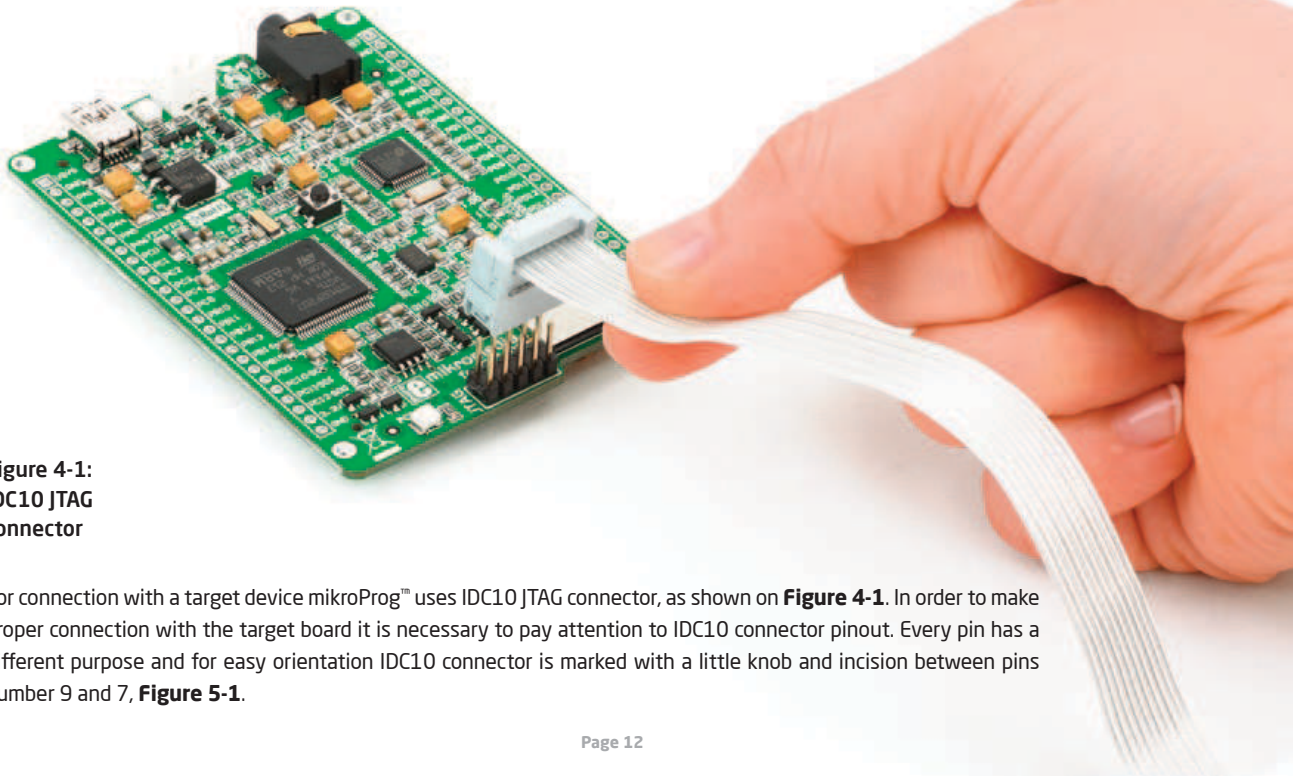


Figure 4-1:
IDC10 JTAG
connector

For connection with a target device mikroProg™ uses IDC10 JTAG connector, as shown on **Figure 4-1**. In order to make proper connection with the target board it is necessary to pay attention to IDC10 connector pinout. Every pin has a different purpose and for easy orientation IDC10 connector is marked with a little knob and incision between pins number 9 and 7, **Figure 5-1**.

5. Connector Pinout

- 01 **VCC-3.3V** - Power supply
- 03 **GND** - Ground
- 05 **GND** - Ground
- 07 **TRST** - JTAG reset
- 09 **GND** - Ground

- 02 **TMS/SWDIO** - JTAG Mode Select/SWD data I/O
- 04 **TCK/SWCLK** - JTAG Clock/SWD clock
- 06 **TDO** - JTAG Data output
- 08 **TDI** - JTAG Data input
- 10 **#RESET** - System Reset

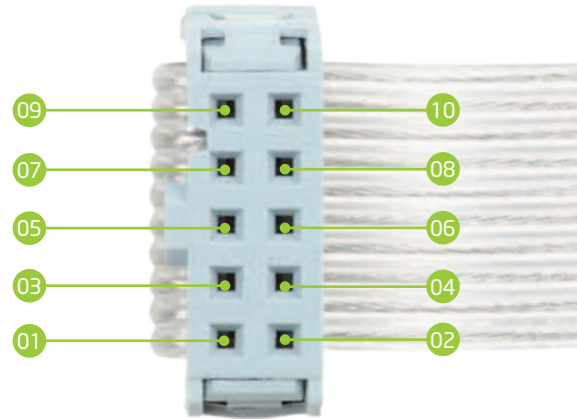


Figure 5-1: Female connector pinout

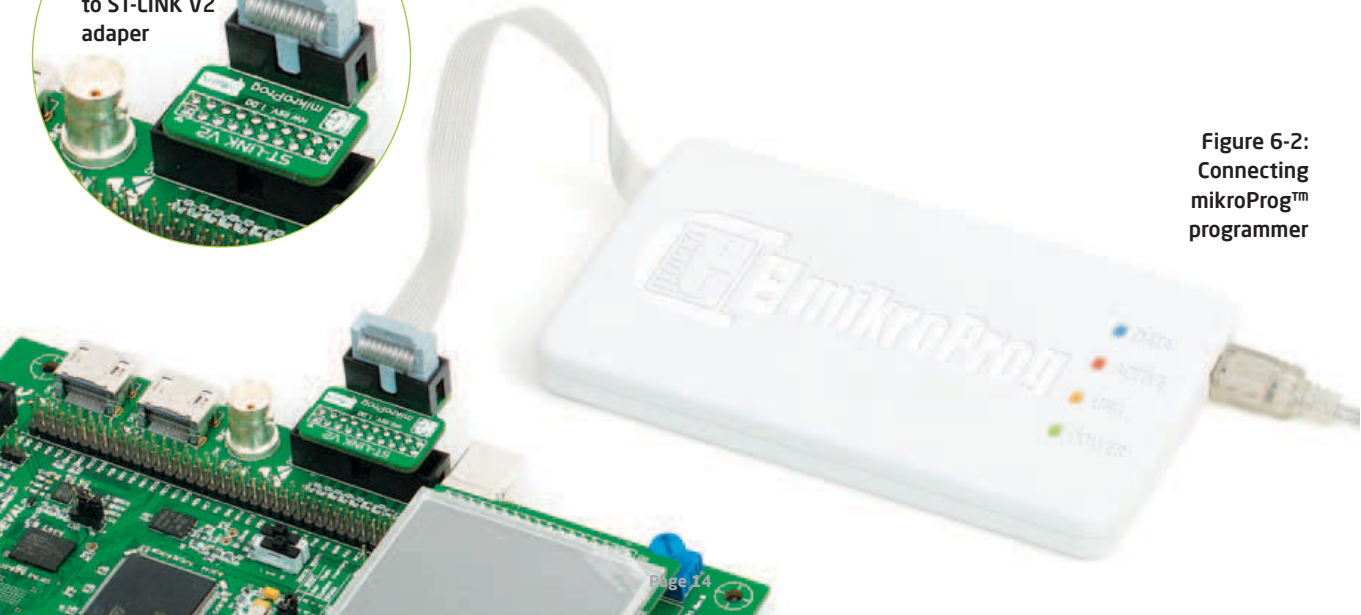
6. mikroProg™ to 20-pin JTAG connector

Figure 6-1:
mikroProg™
to ST-LINK V2
adaper



In order to connect mikroProg to 20-pin male JTAG connector it is necessary to use appropriate adapter, such as the **mikroProg™ to ST-LINK V2 adaper**, **Figure 6-1**. This adapter should be first placed on 2x10 male connector. Then you should plug in the mikroProg™ into 2x5 male header, **Figure 6-2**.

Figure 6-2:
Connecting
mikroProg™
programmer



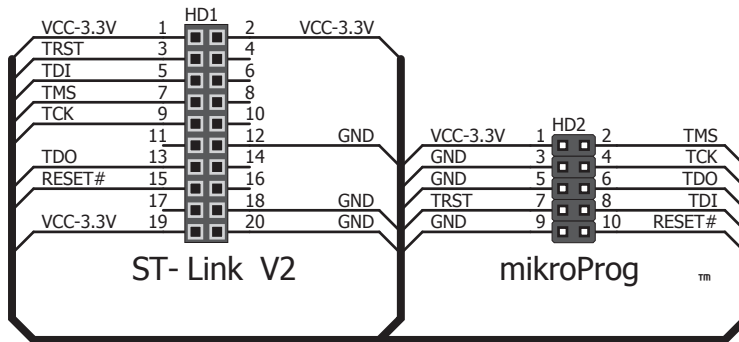
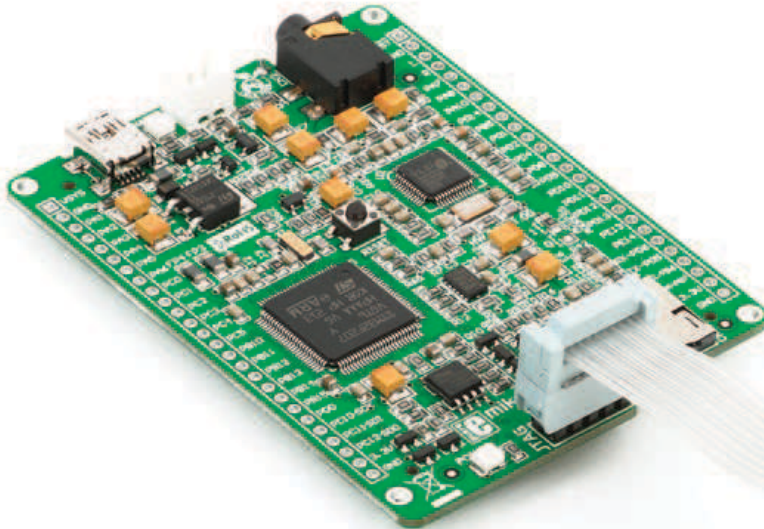


Figure 6-3: mikroProg™ to ST-Link V2 adapter connection schematics

7. Connection schematics examples



Following examples demonstrate connections with some of the most popular supported microcontrollers. Each one is carefully selected as a representative of the entire family. All MCUs use TMS, TCK, TDO, TDI, TRST, #RESET lines for JTAG programming or SWDIO, SWCLK for SWD (Serial Wire Debug) programming. These lines are located on same microcontroller pins within a family.

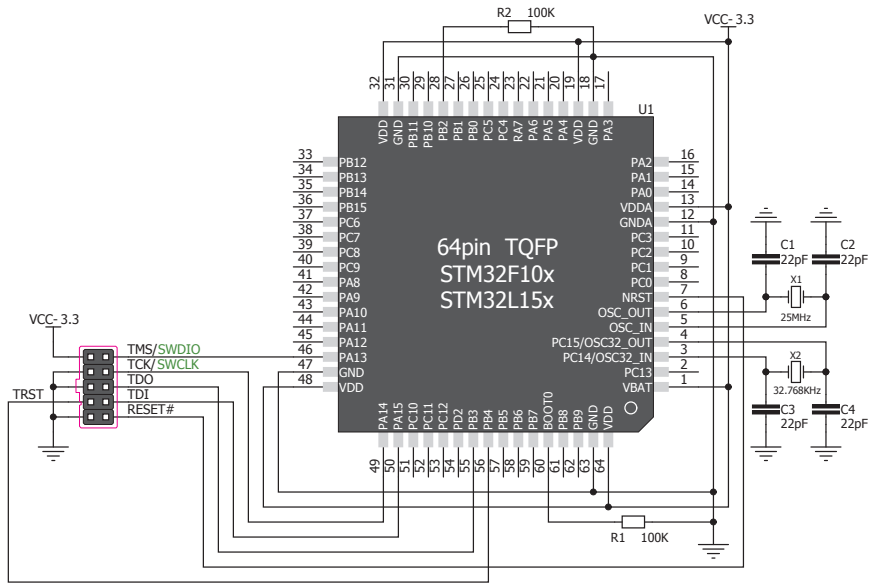


Figure 7-1: Connection schematics for 64-pin STM32F10x/STM32L15x MCU via 2x5 male header

100-pin STM32® schematic

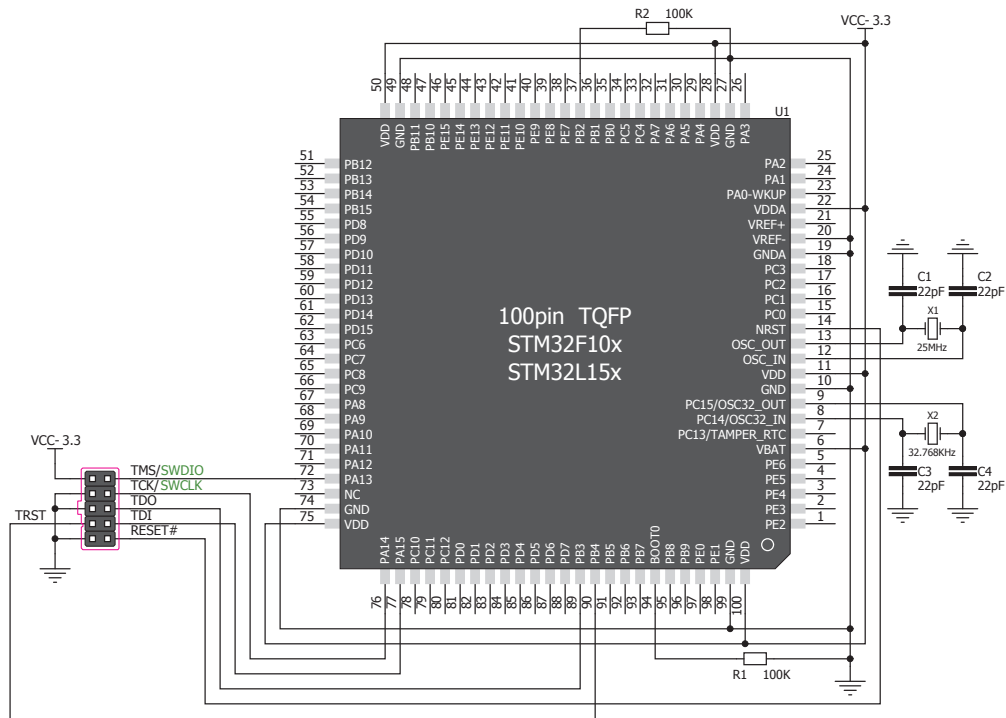


Figure 7-2: Connection schematics for 100-pin STM32F10x/ STM32L15x MCU via 2x5 male header

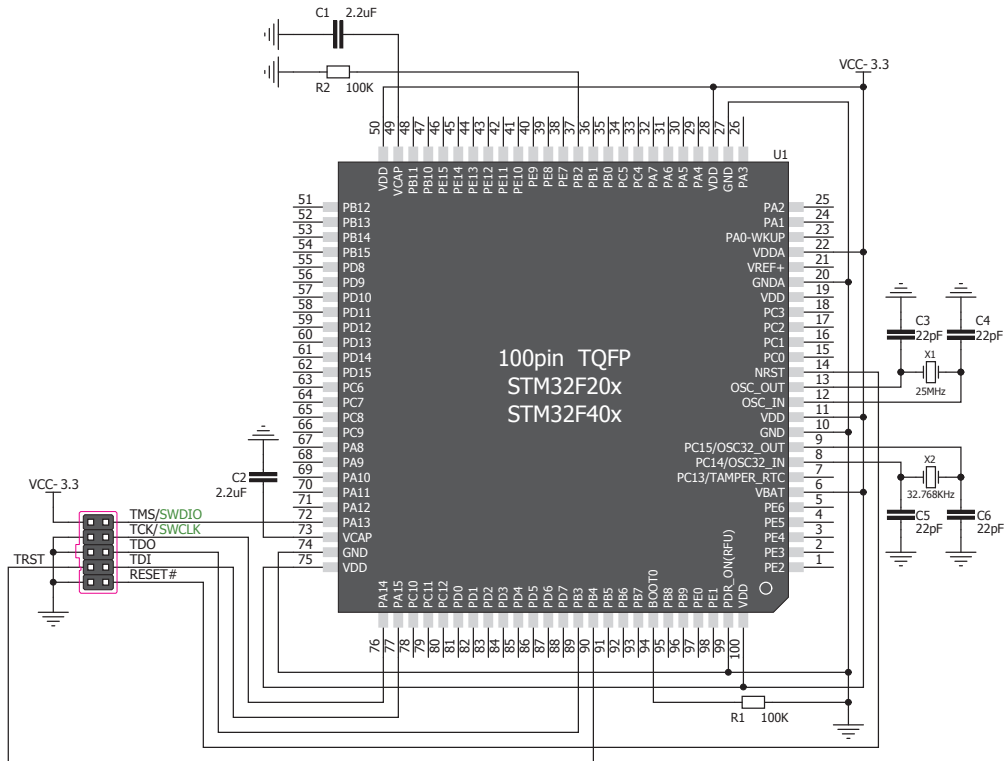


Figure 7-3: Connection schematics for 100-pin STM32F20x/STM32F40x MCU via 2x5 male header

144-pin STM32® schematic

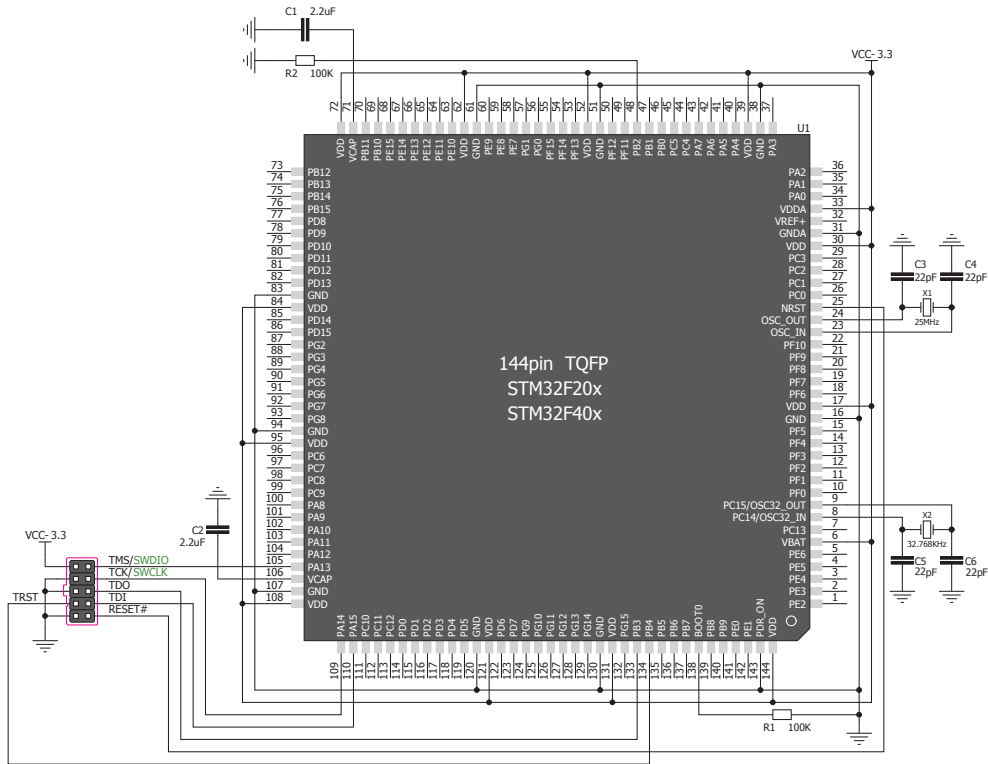


Figure 7-4: Connection schematics for 144-pin STM32F20x/STM32F40x MCU via 2x5 male header

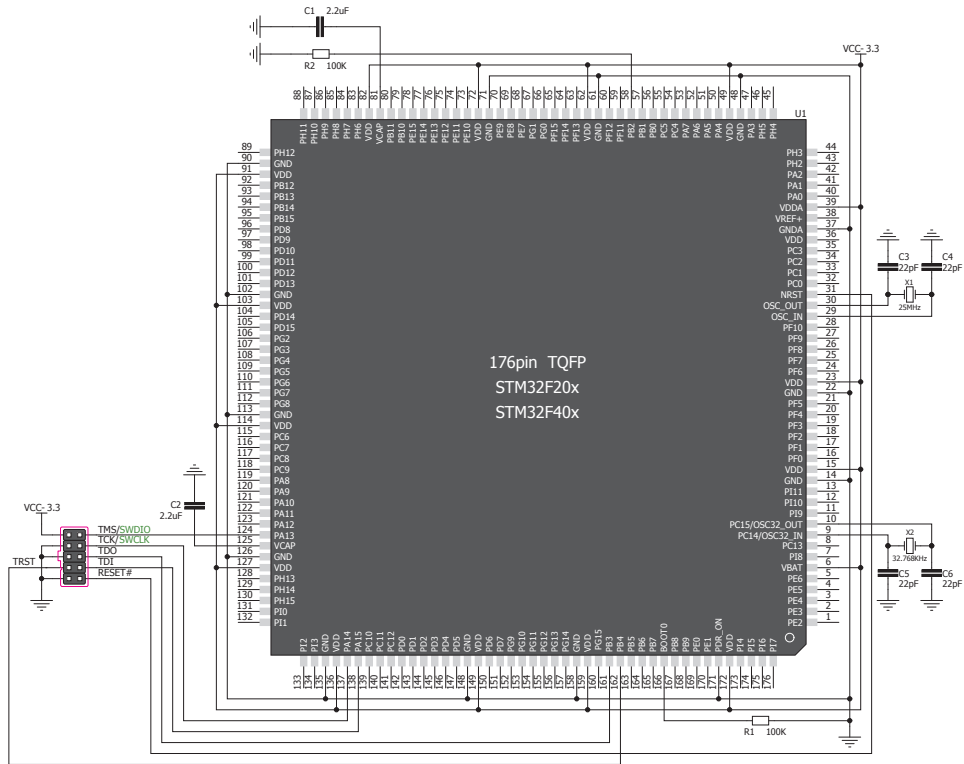


Figure 7-5: Connection schematics for 176-pin STM32F20x/STM32F40x MCU via 2x5 male header

Notes:

DISCLAIMER

All the products owned by MikroElektronika are protected by copyright law and international copyright treaty. Therefore, this manual is to be treated as any other copyright material. No part of this manual, including product and software described herein, may be reproduced, stored in a retrieval system, translated or transmitted in any form or by any means, without the prior written permission of MikroElektronika. The manual PDF edition can be printed for private or local use, but not for distribution. Any modification of this manual is prohibited.

MikroElektronika provides this manual 'as is' without warranty of any kind, either expressed or implied, including, but not limited to, the implied warranties or conditions of merchantability or fitness for a particular purpose.

MikroElektronika shall assume no responsibility or liability for any errors, omissions and inaccuracies that may appear in this manual. In no event shall MikroElektronika, its directors, officers, employees or distributors be liable for any indirect, specific, incidental or consequential damages (including damages for loss of business profits and business information, business interruption or any other pecuniary loss) arising out of the use of this manual or product, even if MikroElektronika has been advised of the possibility of such damages. MikroElektronika reserves the right to change information contained in this manual at any time without prior notice, if necessary.

HIGH RISK ACTIVITIES

The products of MikroElektronika are not fault - tolerant nor designed, manufactured or intended for use or resale as on - line control equipment in hazardous environments requiring fail - safe performance, such as in the operation of nuclear facilities, aircraft navigation or communication systems, air traffic control, direct life support machines or weapons systems in which the failure of Software could lead directly to death, personal injury or severe physical or environmental damage ('High Risk Activities'). MikroElektronika and its suppliers specifically disclaim any expressed or implied warranty of fitness for High Risk Activities.

TRADEMARKS

The MikroElektronika name and logo, the MikroElektronika logo, mikroC™, mikroBasic™, mikroPascal™, mikroProg™, EasyMx PRO™ and mikromedia™ are trademarks of MikroElektronika. All other trademarks mentioned herein are property of their respective companies.

All other product and corporate names appearing in this manual may or may not be registered trademarks or copyrights of their respective companies, and are only used for identification or explanation and to the owners' benefit, with no intent to infringe.



If you want to learn more about our products, please visit our website at www.mikroe.com

If you are experiencing some problems with any of our products or just need additional information, please place your ticket at www.mikroe.com/support/

If you have any questions, comments or business proposals, do not hesitate to contact us at office@mikroe.com

mikroProg for STM32® Manual
ver. 1.00



0 100000 019504