



Chipsmall Limited consists of a professional team with an average of over 10 year of expertise in the distribution of electronic components. Based in Hongkong, we have already established firm and mutual-benefit business relationships with customers from,Europe,America and south Asia,supplying obsolete and hard-to-find components to meet their specific needs.

With the principle of "Quality Parts,Customers Priority,Honest Operation,and Considerate Service",our business mainly focus on the distribution of electronic components. Line cards we deal with include Microchip,ALPS,ROHM,Xilinx,Pulse,ON,Everlight and Freescale. Main products comprise IC,Modules,Potentiometer,IC Socket,Relay,Connector.Our parts cover such applications as commercial,industrial, and automotives areas.

We are looking forward to setting up business relationship with you and hope to provide you with the best service and solution. Let us make a better world for our industry!



## Contact us

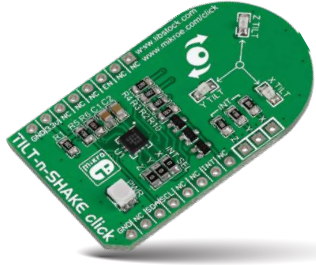
Tel: +86-755-8981 8866 Fax: +86-755-8427 6832

Email & Skype: info@chipsmall.com Web: www.chipsmall.com

Address: A1208, Overseas Decoration Building, #122 Zhenhua RD., Futian, Shenzhen, China



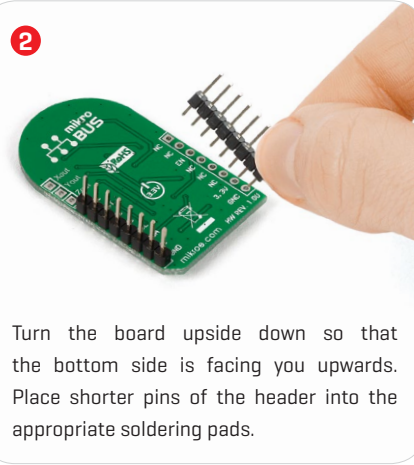
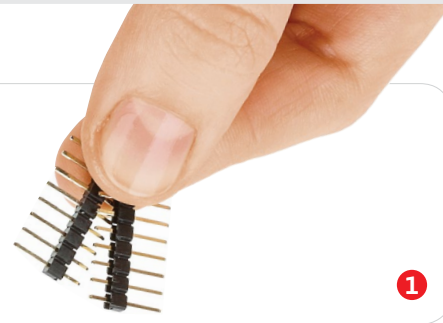




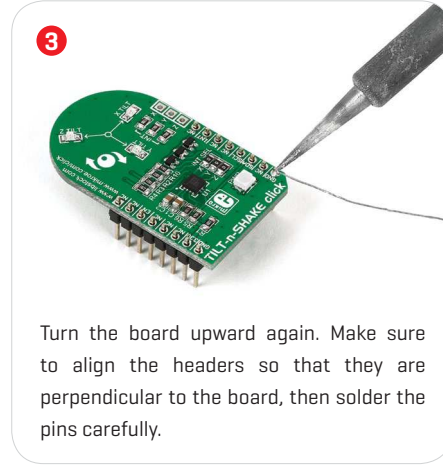
## TILT-n-SHAKE click

### 2. Soldering the headers

Before using your click board™, make sure to solder 1x8 male headers to both left and right side of the board. Two 1x8 male headers are included with the board in the package.



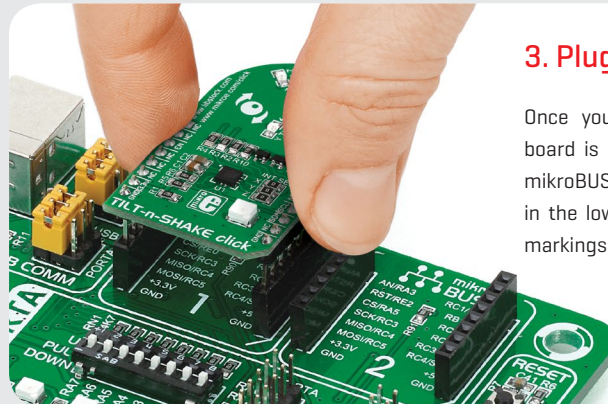
Turn the board upside down so that the bottom side is facing you upwards. Place shorter pins of the header into the appropriate soldering pads.



Turn the board upward again. Make sure to align the headers so that they are perpendicular to the board, then solder the pins carefully.

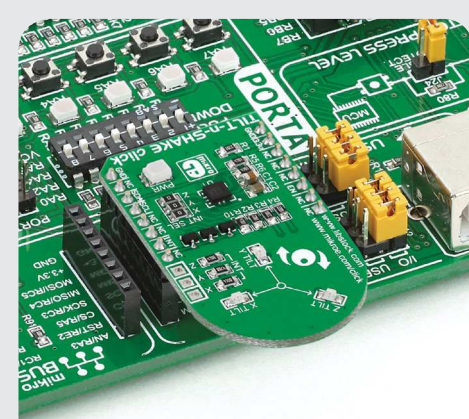
### 1. Introduction

TILT-n-SHAKE click carries Freescale's **MMA8491Q** IC. It's a multifunctional 3-axis digital accelerometer that can also be configured as a 45-degree Tilt sensor. As an accelerometer, it communicates with the target MCU through mikroBUS™ I<sup>2</sup>C pins [SCL, SDA]. When configured as a Tilt sensor, the click board needs only one output pin — INT [interrupt]. TILT-n-SHAKE click is designed to use a 3.3V power supply only.



### 3. Plugging the board in

Once you have soldered the headers your board is ready to be placed into the desired mikroBUS™ socket. Make sure to align the cut in the lower-right part of the board with the markings on the silkscreen at the mikroBUS™ socket. If all the pins are aligned correctly, push the board all the way into the socket.



### 4. Essential features

To use TILT-n-SHAKE click as an accelerometer, keep the enable pin [EN] pulled to logic high. The 14-bit digital output has over ±8g full-scale range with 1 mg/LSB sensitivity, and a fast output time of about 700 microseconds. As a tilt sensor, the MMA8491Q has three detection outputs, one for each axis: Xout, Yout and Zout. Three onboard LEDs will also signal the tilt orientation.

**click**  
BOARD™  
[www.mikroe.com](http://www.mikroe.com)

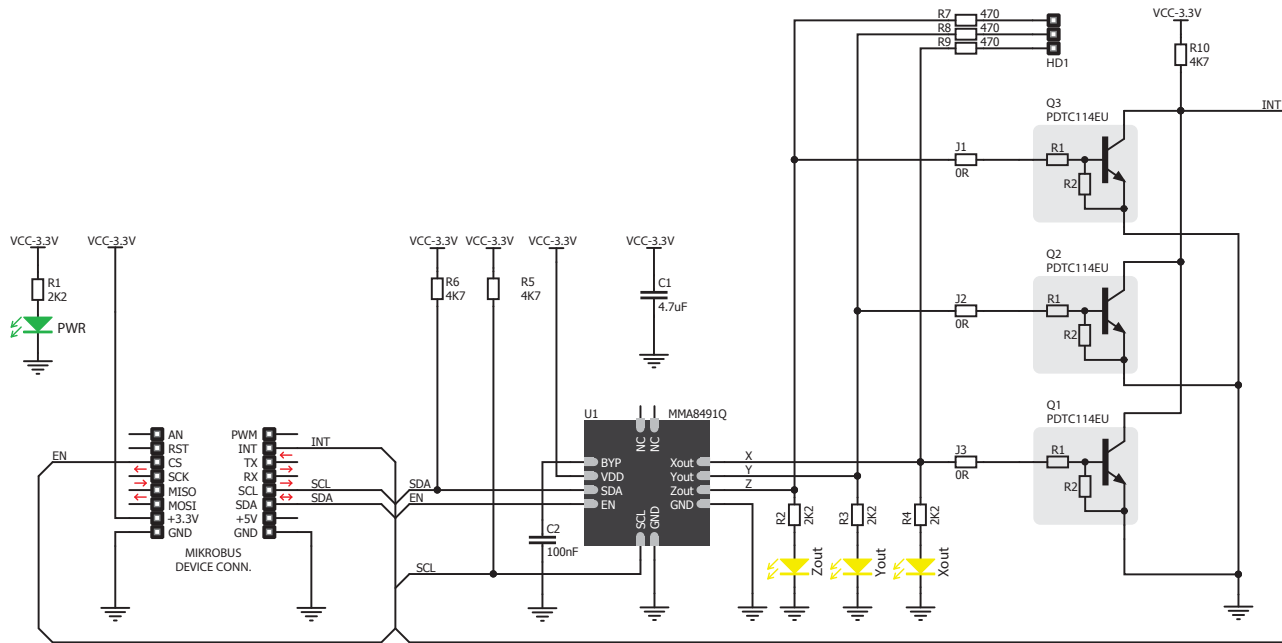


TILTnSHAKE click manual  
ver 1.00

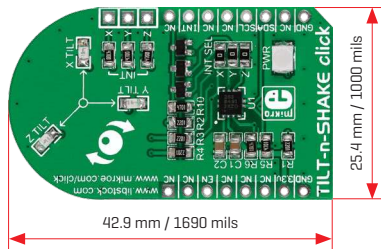


010000081266

## 5. Schematic



## 6. Dimensions



	mm	mils
LENGTH	42.9	1690
WIDTH	25.4	1000
HEIGHT*	3.3	130

\* without headers

## 7. INT SEL jumpers



Depending on your applications you may not need the tilt sensor to react to every axis of movement. You can reduce its sensitivity to two, or just one dimensions, by unsoldering one of the three INT SEL jumpers.

## 8. Code examples

Once you have done all the necessary preparations, it's time to get your click board™ up and running. We have provided examples for mikroC™, mikroBasic™ and mikroPascal™ compilers on our **Libstock** website. Just download them and you are ready to start.



## 9. Support

MikroElektronika offers **free tech support** [[www.mikroe.com/support](http://www.mikroe.com/support)] until the end of the product's lifetime, so if something goes wrong, we're ready and willing to help!



## 10. Disclaimer

MikroElektronika assumes no responsibility or liability for any errors or inaccuracies that may appear in the present document. Specification and information contained in the present schematic are subject to change at any time without notice.

Copyright © 2015 MikroElektronika.  
All rights reserved.