



Chipsmall Limited consists of a professional team with an average of over 10 year of expertise in the distribution of electronic components. Based in Hongkong, we have already established firm and mutual-benefit business relationships with customers from,Europe,America and south Asia,supplying obsolete and hard-to-find components to meet their specific needs.

With the principle of “Quality Parts,Customers Priority,Honest Operation,and Considerate Service”,our business mainly focus on the distribution of electronic components. Line cards we deal with include Microchip,ALPS,ROHM,Xilinx,Pulse,ON,Everlight and Freescale. Main products comprise IC,Modules,Potentiometer,IC Socket,Relay,Connector.Our parts cover such applications as commercial,industrial, and automotives areas.

We are looking forward to setting up business relationship with you and hope to provide you with the best service and solution. Let us make a better world for our industry!



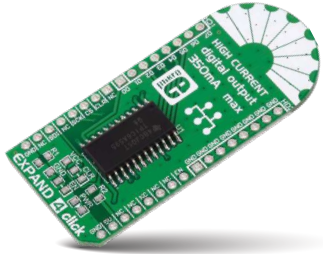
Contact us

Tel: +86-755-8981 8866 Fax: +86-755-8427 6832

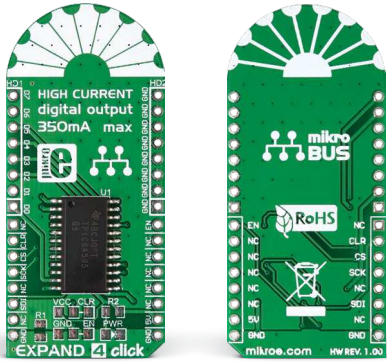
Email & Skype: info@chipsmall.com Web: www.chipsmall.com

Address: A1208, Overseas Decoration Building, #122 Zhenhua RD., Futian, Shenzhen, China





EXPAND 4 click

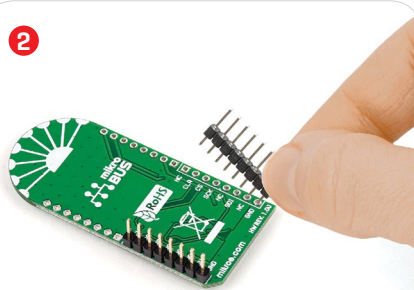
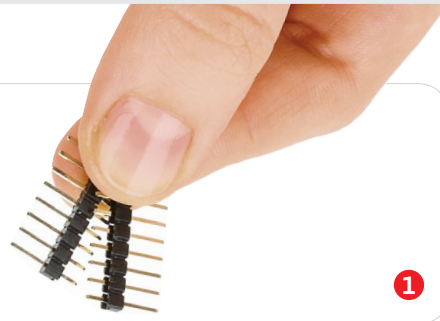


1. Introduction

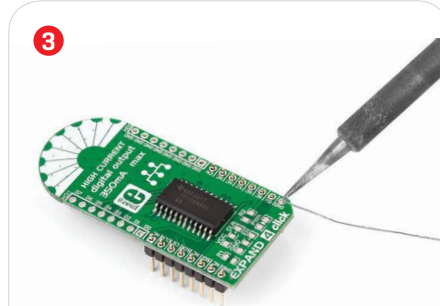
Expand 4 click carries **TPCIC6A595**, a power logic 8-bit shift register. It's intended for use as a port expander for connecting high power peripherals (up to 50V/350-mA). The mikroBUS™ MOSI pin serves as the data input from the MCU, with SCK providing the clock, and CLR IN, CS and EN pin providing additional functionality. The output interface comprises 16 pins: DO-D7 outputs paired with 8 GND pins. Uses 5V power supply.

2. Soldering the headers

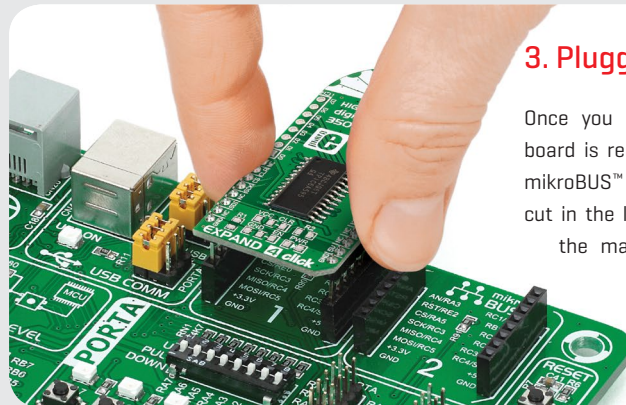
Before using your click board™, make sure to solder 1x8 male headers to both left and right side of the board. Two 1x8 male headers are included with the board in the package.



Turn the board upside down so that the bottom side is facing you upwards. Place shorter pins of the header into the appropriate soldering pads.

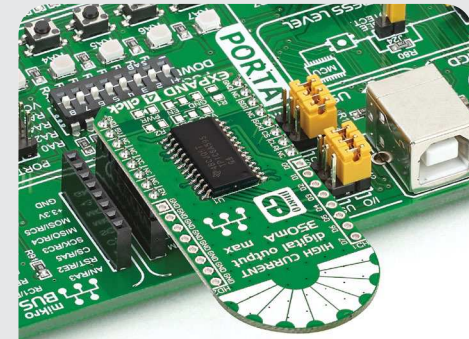


Turn the board upward again. Make sure to align the headers so that they are perpendicular to the board, then solder the pins carefully.



3. Plugging the board in

Once you have soldered the headers your board is ready to be placed into the desired mikroBUS™ socket. Make sure to align the cut in the lower-right part of the board with the markings on the silkscreen at the mikroBUS™ socket. If all the pins are aligned correctly, push the board all the way into the socket.



4. Essential features

The TPCIC6A595 chip combines an 8-bit serial-in, parallel-out shift register with an 8-bit D-type storage register. On the input side, *Expand 4 click* uses a SPI interface, with few additions. The CLR IN pin will clear all input shift registers when held low. The EN IN pin set all drain outputs to OFF when held high. The CS pin provides the impulse for shifting the data from the shift to the storage register. The outputs are open-drain transistor with continuous sink capability.

click
BOARD™
www.mikroe.com



EXPAND 4 click manual
ver 1.00



