



Chipsmall Limited consists of a professional team with an average of over 10 year of expertise in the distribution of electronic components. Based in Hongkong, we have already established firm and mutual-benefit business relationships with customers from,Europe,America and south Asia,supplying obsolete and hard-to-find components to meet their specific needs.

With the principle of “Quality Parts,Customers Priority,Honest Operation,and Considerate Service”,our business mainly focus on the distribution of electronic components. Line cards we deal with include Microchip,ALPS,ROHM,Xilinx,Pulse,ON,Everlight and Freescale. Main products comprise IC,Modules,Potentiometer,IC Socket,Relay,Connector.Our parts cover such applications as commercial,industrial, and automotives areas.

We are looking forward to setting up business relationship with you and hope to provide you with the best service and solution. Let us make a better world for our industry!



Contact us

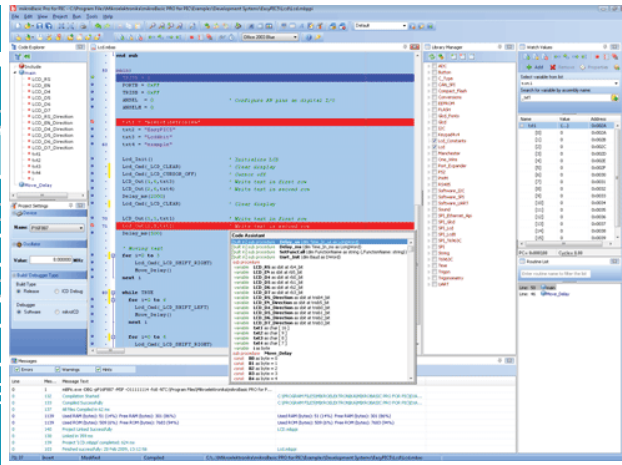
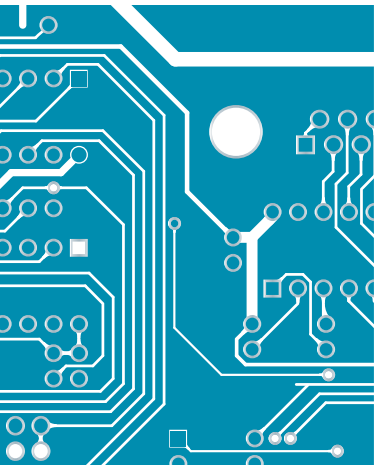
Tel: +86-755-8981 8866 Fax: +86-755-8427 6832

Email & Skype: info@chipsmall.com Web: www.chipsmall.com

Address: A1208, Overseas Decoration Building, #122 Zhenhua RD., Futian, Shenzhen, China



mikroBASIC PRO for PIC



USER MANUAL

Develop your applications quickly and easily with the world's most intuitive mikroBASIC PRO for PIC Microcontrollers.

Highly sophisticated IDE provides the power you need with the simplicity of a Windows based point-and-click environment.

With useful implemented tools, many practical code examples, broad set of built-in routines, and a comprehensive Help, mikroBASIC PRO for PIC makes a fast and reliable tool, which can satisfy needs of experienced engineers and beginners alike.

April 2009.**Reader's note****DISCLAIMER:**

mikroBASIC PRO for PIC and this manual are owned by mikroElektronika and are protected by copyright law and international copyright treaty. Therefore, you should treat this manual like any other copyrighted material (e.g., a book). The manual and the compiler may not be copied, partially or as a whole without the written consent from the mikroElektronika. The PDF-edition of the manual can be printed for private or local use, but not for distribution. Modifying the manual or the compiler is strictly prohibited.

HIGH RISK ACTIVITIES:

The *mikroBASIC PRO for PIC* compiler is not fault-tolerant and is not designed, manufactured or intended for use or resale as on-line control equipment in hazardous environments requiring fail-safe performance, such as in the operation of nuclear facilities, aircraft navigation or communication systems, air traffic control, direct life support machines, or weapons systems, in which the failure of the Software could lead directly to death, personal injury, or severe physical or environmental damage ("High Risk Activities"). mikroElektronika and its suppliers specifically disclaim any express or implied warranty of fitness for High Risk Activities.

LICENSE AGREEMENT:

By using the *mikroBASIC PRO for PIC* compiler, you agree to the terms of this agreement. Only one person may use licensed version of *mikroBASIC PRO for PIC* compiler at a time. Copyright © mikroElektronika 2003 - 2009.

This manual covers *mikroBASIC PRO for PIC* version 1.0 and the related topics. Newer versions may contain changes without prior notice.

COMPILER BUG REPORTS:

The compiler has been carefully tested and debugged. It is, however, not possible to guarantee a 100 % error free product. If you would like to report a bug, please contact us at the address office@mikroe.com. Please include next information in your bug report:

- Your operating system
- Version of *mikroBASIC PRO for PIC*
- Code sample
- Description of a bug

CONTACT US:

mikroElektronika
Voice: + 381 (11) 36 28 830
Fax: + 381 (11) 36 28 831
Web: www.mikroe.com
E-mail: office@mikroe.com

Windows is a Registered trademark of Microsoft Corp. All other trade and/or services marks are the property of the respective owners.

Table of Contents

CHAPTER 1	Introduction
CHAPTER 2	<i>mikroBASIC PRO for PIC Environment</i>
CHAPTER 3	<i>mikroICD (In-Circuit Debugger)</i>
CHAPTER 4	<i>mikroBASIC PRO for PIC Specifics</i>
CHAPTER 5	PIC Specifics
CHAPTER 6	<i>mikroBASIC PRO for PIC Language Reference</i>
CHAPTER 7	<i>mikroBASIC PRO for PIC Libraries</i>

CHAPTER 1

Features	2
Where to Start	3
mikroElektronika Associates License Statement and Limited Warranty	4
IMPORTANT - READ CAREFULLY	4
LIMITED WARRANTY	5
HIGH RISK ACTIVITIES	6
GENERAL PROVISIONS	6
Technical Support	7
How to Register	8
Who Gets the License Key	8
How to Get License Key	8
After Receiving the License Key	10

CHAPTER 2

IDE Overview	12
Main Menu Options	14
File Menu Options	15
Edit Menu Options	16
Find Text	17
Replace Text	18
Find In Files	18
Go To Line	19
Regular expressions option	19
View Menu Options	20
Toolbars	21
File Toolbar	21
Edit Toolbar	21
Advanced Edit Toolbar	22
Find/Replace Toolbar	22
Project Toolbar	23
Build Toolbar	23
Build Toolbar come	23
Debugger	24

Styles Toolbar	24
Tools Toolbar	25
Project Menu Options	26
Run Menu Options	28
Tools Menu Options	29
Help Menu Options	30
Keyboard Shortcuts	31
IDE Overview	33
Customizing IDE Layout	35
Docking Windows	35
Saving Layout	36
Auto Hide	37
Advanced Code Editor	38
Advanced Editor Features	38
Code Assistant	40
Code Folding	40
Parameter Assistant	41
Code Templates (Auto Complete)	41
Auto Correct	42
Spell Checker	42
Bookmarks	42
Bookmarks m	42
Goto Line	42
comment	42
Also, the Code Edito	42
Code Explorer	43
Routine List	44
Project Manager	45
Project Settings Window	47
Library Manager	48
Error Window	50
STaticS	51
Memory Usage Windows	51
RAM Memory Usage	51
Used RAM Locations	52
SFR Locations	52

ROM Memory Usage	53
ROM Memory Constants	53
Functions Sorted By Name	54
Functions Sorted	54
Sorts and displays functi	54
Functions Sorted By Addresses	55
Functions Sorted By Name Chart	55
Sorts and displays functions by their names in a ch	55
Functions Sorted By Size Chart	56
Functions Sorted By Addresses Chart	56
Function Tree	57
Memory Summary	57
Displays summary of RAM and ROM m	57
Integrated Tools	58
USART Terminal	58
EEPROM Editor	59
ASCII Chart	60
Seven Segment Decoder	61
Lcd Custom Character	61
mikroBasic PRO for PIC includes the L	61
Graphic LCD Bitmap Editor	62
HID Terminal	63
The mikroBasic	63
Udp Terminal	64
The mikroBasic	64
mikroBootloader	65
What is a Bootloader	65
Features	66
Macro Editor	67
Options	68
Code editor	68
Tools	68
Output settings	69
Regular Expressions	70
Introduction	70
Simple matches	70

Escape sequences	70
Character classes	71
Metacharacters	71
Metacharacters - Line separators	72
Metacharacters - Predefined classes	72
Metacharacters - Word boundaries	73
Metacharacters - Iterators	73
Metacharacters - Alternatives	74
Metacharacters - Subexpressions	75
Metacharacters - Backreferences	75
mikroBasic PRO for PIC	76
Command Line Options	76
Projects	77
New Project	77
New Project Wizard Steps	78
Customizing Projects	81
Managing Project Group	81
Add/Remove Files from Project	81
Project Level Defines	82
Source Files	83
Managing Source Files	83
Creating new source file	83
Opening an existing file	83
Printing an open file	83
Saving file	84
Saving file under a different name	84
Closing file	84
Clean Project Folder	85
Compilation	86
Output Files	86
Assembly View	86
Error Messages	87
Compiler Error Messages:	87
Warning Messages:	89
Hint Messages:	89
Software Simulator Overview	90

Breakpoints Window	90
View RAM Window	93
Stopwatch Window	94
Software Simulator Options	95
Creating New Library	96
Multiple Library Versions	96
mikroICD (In-Circuit Debugger)	97

CHAPTER 3

mikroICD Debugger Optional	99
mikroICD Debugger Example	100
mikroICD (In-Circuit Debugger) Overview	104
Breakpoints Window	104
Watch Window	104
Debugger Watch	104
EEPROM Watch Window	105
Code Watch Window	106
View RAM Window	106
Common Errors	107
mikro ICD Advanced Breakpoints	108
Program Memory Break	109
File Register Break	109
Emulator Features	109
Event Breakpoints	109
Stopwatch	109

CHAPTER 4

BASIC Standard Issues	112
Divergence from the Basic Standard	112
Basic Language Extensions	112
Predefined Globals and Constants	113
SFRs and related constants	113
All PIC SFRs are implicitly	113
These defines are based on a valu	113

Accessing Individual Bits	114
Accessing Individual Bits Of Variables	114
sbit type	114
bit type	115
Interrupts	116
Linker Directives	118
Directive absolute	118
Directive org	118
Built-in Routines	119
Lo	120
Hi	120
Higher	120
Highest	121
Inc	121
Dec	121
Delay_us	122
Delay_ms	122
Clock_KHz	122
Clock_MHz	123
Reset	123
ClrWdt	123
DisableContextSaving	124
SetFuncCall	124
GetDateTime	125
GetVersion	125
Code Optimization	126
Optimizer has been	126

CHAPTER 5

Types Efficiency	130
Nested call represents a	130
PIC18FxxJxx Specifics	131
Shared Address SFRs	131
PIC16 Specifics	131
Breaking Through Pages	131

Limits of Indirect Approach Through FSR	131
Memory Type Specifiers	132
code	132
data	132
rx	132
sfr	133

CHAPTER 6

Lexical Elements Overview	138
Whitespace	138
Newline Character	138
Whitespace in Strings	139
Comments	139
Tokens	140
Literals	141
Integer Literals	141
Floating Point Literals	141
Character Literals	142
Keywords	144
Identifiers	147
Case Sensitivity	147
Uniqueness and Scope	147
Identifier Examples	147
Punctuators	148
Brackets	148
Parentheses	148
Comma	148
Colon	149
Dot	149
Program Organization	150
Organization of Main Unit	150
Organization of Other Modules	151
Scope and Visibility	153
Scope	153
Visibility	153

Modules	154
mikroBasic PRO	154
Main Module	155
Every project	155
Modules other	155
Implementation Section	156
Variables	157
External Modifier	157
Variables and PIC	157
Constants	158
Labels	159
Symbols	160
Functions and Procedures	161
Functions	161
Calling a function	161
Example	162
Procedures	162
Calling a procedure	163
Example	163
Function Pointers	163
Forward declaration	165
Functions reentrancy	165
Types	166
Type Categories	166
Simple Types	167
Arrays	168
Array Declaration	168
Constant Arrays	168
Strings	169
POINTERS	170
Operator	170
Structures	171
Structure Member Access	172
Types Conversions	173
Implicit Conversion	173
Promotion	173

Clipping	174
Explicit Conversion	174
Operators	175
Operators Precedence and Associativity	175
Arithmetic Operators	176
Division by Zero	176
Unary Arithmetic Operators	176
Relational Operators	177
Relational Operators in Expressions	177
Bitwise Operators	178
Bitwise Operators Overview	178
Unsigned and Conversions	179
Signed and Conversions	179
Bitwise Shift Operators	180
BoOlean Operators	180
Expressions	181
Statements	181
Assignment Statements	182
Conditional Statements	182
If Statement	182
Nested if statements	183
SELECT Case statement	184
Iteration Statements	186
For Statement	186
Endless Loop	186
While Statement	187
Do Statement	188
The do stateme	188
Jump Statements	189
Break and Continue Statements	189
Break Statement	189
Continue Statement	189
Exit Statement	190
Goto Statement	191
Gosub Statement	192
asm	192

Statement	192
Directives	193
Compiler Directives	193
Directives #DEFINE and #UNDEFINE	193
Directives #IFDEF, \$IFDEF, #ELSEIF and #ELSE	194
Predefined Flags	195
Linker Directives	195
Directive absolute	195
Directive org	196

CHAPTER 7

Hardware PIC-specific Libraries	198
Miscellaneous Libraries	198
Library Dependencies	199
Hardware Libraries	201
ADC Library	202
Library Routines	202
ADC_Read	202
Library Example	203
HW Connection	203
CAN Library	204
Library Routines	204
CANSetOperationMode	205
CANGetOperationMode	205
CANInitialize	206
CANSetBaudRate	207
CANSetMask	208
CANSetFilter	209
CANRead	210
CANWrite	211
CAN Constants	212
CAN_OP_MODE	212
CAN_CONFIG_FLAGS	212
CAN_TX_MSG_FLAGS	213
CAN_RX_MSG_FLAGS	214

CAN_MASK	214
CAN_FILTER	214
Library Example	215
HW Connection	218
CANSPI Library	219
External dependencies of CANSPI Library	220
Library Routines	220
CANSPISetOperationMode	220
CANSPIGetOperationMode	220
CANSPIInitialize	220
CANSPISetBaudRate	220
CANSPISetMask	220
CANSPISetFilter	220
CANSPIread	220
CANSPIwrite	220
CANSPISetOperationMode	221
CANSPIGetOperationMode	221
CANSPIInitialize	222
CANSPISetBaudRate	224
CANSPISetMask	225
CANSPISetFilter	226
CANSPIRead	227
CANSPIWrite	228
CANSPI Constants	229
CANSPI_OP_MODE	229
CANSPI_CONFIG_FLAGS	229
CANSPI_TX_MSG_FLAGS	230
CANSPI_RX_MSG_FLAGS	231
CANSPI_MASK	231
CANSPI_FILTER	231
Library Example	232
HW Connection	235
Compact Flash Library	236
External dependencies of Compact Flash Library	236
Library Routines	238
Cf_Init	239

Cf_Detect	240
Cf_Enable	240
Cf_Disable	240
Cf_Read_Init	241
Cf_Read_Byte	241
Cf_Write_Init	242
Cf_Write_Byte	242
Cf_Read_Sector	243
Cf_Write_Sector	243
Cf_Fat_Init	244
Cf_Fat_QuickFormat	244
Cf_Fat_Assign	245
Cf_Fat_Reset	246
Cf_Fat_Read	246
Cf_Fat_Rewrite	247
Cf_Fat_Append	247
Cf_Fat_Delete	248
Cf_Fat_Write	248
Cf_Fat_Set_File_Date	249
Cf_Fat_Get_File_Date	250
Cf_Fat_Get_File_Size	250
Cf_Fat_Get_Swap_File	251
Library Example	253
HW Connection	258
EEPROM Library	259
Library Routines	259
EEPROM_Read	259
EEPROM_Write	260
Library Example	260
Library Routines	263
Ethernet_Init	264
Ethernet_Enable	265
Ethernet_Disable	266
Ethernet_doPacket	267
Ethernet_putByte	268
Ethernet_putBytes	268

Ethernet_putConstBytes	269
Ethernet_putString	269
Ethernet_putConstString	270
Ethernet_getByte	270
Ethernet_getBytes	271
Ethernet_UserTCP	272
Ethernet_UserUDP	273
Ethernet_getIpAddress	274
Ethernet_getGwIpAddress	274
Ethernet_getDnsIpAddress	275
Ethernet_getIpMask	275
Ethernet_confNetwork	276
Ethernet_arpResolve	277
Ethernet_sendUDP	278
Ethernet_dnsResolve	279
Ethernet_initDHCP	280
Ethernet_doDHCPLeaseTime	281
Ethernet_renewDHCP	281
Library Example	282
Flash Memory Library	290
Library Routines	290
FLASH_Read	291
FLASH_Read_N_Bytes	291
FLASH_Write	292
FLASH_Erase	293
FLASH_Erase_Write	293
Library Example	294
Graphic LCD Library	296
External dependencies of Graphic LCD Library	296
Library Routines	297
Glcd_Init	298
Glcd_Set_Side	299
Glcd_Set_X	299
Glcd_Set_Page	300
Glcd_Read_Data	300
Glcd_Write_Data	301

Glcd_Fill	301
Glcd_Dot	302
Glcd_Line	302
Glcd_V_Line	303
Glcd_H_Line	303
Glcd_Rectangl	304
Glcd_Box	304
Glcd_Circle	305
Glcd_Set_Font	305
Glcd_Write_Char	306
Glcd_Write_Text	307
Glcd_Image	307
Library Example	308
HW Connection	310
Glcd HW connection	310
I ₂ C Library	311
Library Routines	311
2C1_Init	311
I2C1_Start	312
I2C1_Repeated_Start	312
I2C1_Is_Idle	312
I2C1_Rd	313
I2C1_Wr	313
I2C1_Stop	313
Library Example	314
HW Connection	315
Keypad Library	316
External dependencies of Keypad Library	316
Library Routines	316
Keypad_Init	316
Keypad_Key_Press	316
Keypad_Key_Click	316
Keypad_Init	316
Keypad_Key_Press	317
Keypad_Key_Click	317
Library Example	318

HW Connection	320
LCD Library	321
External dependencies of LCD Library	321
Library Routines	322
Lcd_Init	322
Lcd_Out	323
Lcd_Out_Cp	323
Lcd_Chr	324
Lcd_Chr_Cp	324
Lcd_Cmd	325
Available LCD Commands	325
Library Example	326
HW Connection	328
LCD HW connecti	328
Manchester Code Library	329
External dependencies of Manchester Code Library	329
Library Routines	330
Man_Receive_Init	330
Man_Receive	331
Man_Send_Init	331
Man_Send	332
Man_Synchro	332
Man_Break	333
Library Example	334
Connection Example	337
Multi Media Card Library	338
External dependencies of MMC Library	339
Library Routines	339
Mmc_Init	339
Mmc_Read_Sector	339
Mmc_Write_Sector	339
Mmc_Read_Cid	339
Mmc_Read_Csd	339
Routines for file handling:	339
Mmc_Fat_Init	339
Mmc_Fat_QuickFormat	339

Mmc_Fat_Assign	339
Mmc_Fat_Reset	339
Mmc_Fat_Read	339
Mmc_Fat_Rewrite	339
Mmc_Fat_Append	339
Mmc_Fat_Delete	339
Mmc_Fat_Write	339
Mmc_Fat_Set_File_Date	339
Mmc_Fat_Get_File_Date	339
Mmc_Fat_Get_File_Size	339
Mmc_Fat_Get_Swap_File	339
Mmc_Init	340
Mmc_Read_Sector	341
Mmc_Write_Sector	342
Mmc_Read_Cid	343
Mmc_Read_Csd	343
Mmc_Fat_Init	344
Mmc_Fat_QuickFormat	345
Mmc_Fat_Assign	346
Mmc_Fat_Reset	347
Mmc_Fat_Read	347
Mmc_Fat_Rewrite	348
Mmc_Fat_Append	348
Mmc_Fat_Delete	349
Mmc_Fat_Write	349
Mmc_Fat_Set_File_Date	350
Mmc_Fat_Get_File_Date	351
Mmc_Fat_Get_File_Size	352
Mmc_Fat_Get_Swap_File	352
Library Example	354
HW Connection	357
OneWire Library	358
Library Routines	358
Ow_Reset	358
Ow_Read	358
Ow_Write	358

Ow_Reset	359
Ow_Read	359
Ow_Write	359
Library Example	360
HW Connection	362
Port Expander Library	363
External dependencies of Port Expander Library	363
Library Routine	363
Expander_Init	363
Expander_Read_Byte	363
Expander_Write_Byte	363
Expander_Read_PortA	363
Expander_Read_PortB	363
Expander_Read_PortAB	363
Expander_Write_PortA	363
Expander_Write_PortB	363
Expander_Write_PortAB	363
Expander_Set_DirectionPortA	363
Expander_Set_DirectionPortB	363
Expander_Set_DirectionPortAB	363
Expander_Set_PullUpsPortA	363
Expander_Set_PullUpsPortB	363
Expander_Set_PullUpsPortAB	363
Expander_Init	364
Expander_Read_Byte	365
Expander_Write_Byte	365
Expander_Read_PortA	366
Expander_Read_PortB	366
Expander_Read_PortAB	367
Expander_Write_PortA	367
Expander_Write_PortB	368
Expander_Write_PortAB	368
Expander_Set_DirectionPortA	369
Expander_Set_DirectionPortB	369
Expander_Set_DirectionPortAB	370
Expander_Set_PullUpsPortA	370

Expander_Set_PullUpsPortB	371
Expander_Set_PullUpsPortAB	371
Library Example	372
HW Connection	373
PS/2 Library	374
External dependencies of PS/2 Library	374
Library Routines	374
Ps2_Config	374
Ps2_Key_Read	374
Ps2_Config	375
Ps2_Key_Read	376
Special Function Keys	377
Library Example	378
HW Connection	379
PWM Library	380
Library Routines	380
PWM1_Init	380
PWM1_Set_Duty	381
PWM1_Start	381
PWM1_Stop	381
Library Example	382
HW Connection	383
RS-485 Library	384
External dependencies of RS-485 Library	384
Library Routines	385
RS485master_Receive	386
RS485master_Send	386
RS485slave_Init	387
RS485slave_Receive	388
RS485slave_Send	388
Library Example	389
HW Connection	392
Software I ₂ C Library	394
External dependencies of Soft_I ₂ C Library	394
Library Routines	394
Soft_I ₂ C_Init	395

Soft_I2C_Start	395
Soft_I2C_Read	396
Soft_I2C_Write	396
Soft_I2C_Stop	397
Soft_I2C_Break	397
LLibrary Example	398
Software SPI Library	401
External dependencies of Software SPI Library	401
Library Routines	401
Soft_Spi_Init	402
Soft_Spi_Read	403
Soft_Spi_Write	403
Library Example	404
Software UART Library	406
Library Routines	406
Soft_Uart_Init	406
Soft_UART_Read	407
Soft_Uart_Write	407
Soft_UART_Break	408
Library Example	409
Sound Library	410
Library Routines	410
Sound_Init	410
Sound_Play	410
Sound_Init	410
Sound_Play	411
Library Example	411
The example is a simple dem	411
HW Connection	413
Example of Sound Library sonnection	413
SPI Library	414
Library Routines	414
SPI1_Init	414
_LOW_2_HIGH	415
_CLK_IDLE_LOW	415
_CLK_IDLE_HIGH	415

_DATA_SAMPLE_END	415
_DATA_SAMPLE_MIDDLE	415
_SLAVE_SS_ENABLE	415
_MASTER_TMR2	415
_MASTER_OSC_DIV64	415
_MASTER_OSC_DIV16	415
_MASTER_OSC_DIV4	415
Spi1_Init_Advanced	415
Spi1_Read	416
Spi1_Write	416
SPI_Set_Active	417
Library Example	417
The code demonstrates how to u	417
HW Connection	418
SPI HW connection	418
SPI Ethernet Library	419
SPI_Ethernet_RST	420
SPI_Ethernet_CS	420
External dependencies of SPI Ethernet Library	420
Library Routines	421
SPI_Ethernet_Init	421
SPI_Ethernet_Enable	423
SPI_Ethernet_Disable	424
SPI_Ethernet_doPacket	425
SPI_Ethernet_putByte	426
SPI_Ethernet_putBytes	426
SPI_Ethernet_putConstBytes	427
SPI_Ethernet_putString	427
SPI_Ethernet_putConstString	428
SPI_Ethernet_getByte	428
SPI_Ethernet_getBytes	429
SPI_Ethernet_UserTCP	430
SPI_Ethernet_UserUDP	431
Library Example	431
HW Connection	439
SPI Graphic LCD Library	440

External dependencies of SPI Graphic LCD Library	440
Library Routines	440
SPI_Glcd_Init	441
SPI_Glcd_Set_Side	442
SPI_Glcd_Set_Page	442
SPI_Glcd_Set_X	443
SPI_Glcd_Read_Data	443
SPI_Glcd_Write_Data	444
SPI_Glcd_Fill	444
SPI_Glcd_Dot	445
SPI_Glcd_Line	445
SPI_Glcd_V_Line	446
SPI_Glcd_H_Line	446
SPI_Glcd_Rectangle	447
SPI_Glcd_Box	448
SPI_Glcd_Circle	448
SPI_Glcd_Set_Font	449
SPI_Glcd_Write_Char	450
SPI_Glcd_Write_Text	451
SPI_Glcd_Image	452
Library Example	452
HW Connection	454
SPI LCD Library	455
External dependencies of SPI LCD Library	455
Library Routines	455
SPI_Lcd_Config	456
SPI_Lcd_Out	456
SPI_Lcd_Out_Cp	457
SPI_Lcd_Chr	457
SPI_Lcd_Chr_Cp	458
SPI_Lcd_Cmd	458
Available LCD Commands	459
Library Example	460
HW Connection	461
SPI LCD8 (8-bit interface) Library	462
External dependencies of SPI LCD Library	462

Library Routines	462
SPI_Lcd8_Config	463
SPI_Lcd8_Out	463
SPI_Lcd8_Out_Cp	464
SPI_Lcd8_Chr	464
SPI_Lcd8_Chr_Cp	465
SPI_Lcd8_Cmd	465
Available LCD Commands	466
Library Example	467
HW Connection	468
SPI T6963C Graphic LCD Library	469
External dependencies of SPI T6963C Graphic Lcd Library	469
Library Routines	470
SPI_T6963C_Config	471
SPI_T6963C_WriteData	472
SPI_T6963C_WriteCommand	472
SPI_T6963C_SetPtr	473
SPI_T6963C_WaitReady	473
SPI_T6963C_Fill	473
SPI_T6963C_Dot	474
SPI_T6963C_Write_Char	475
SPI_T6963C_Write_Text	476
SPI_T6963C_Line	477
SPI_T6963C_Rectangle	477
SPI_T6963C_Box	478
SPI_T6963C_Circle	478
SPI_T6963C_Image	479
SPI_T6963C_Sprite	479
SPI_T6963C_Set_Cursor	480
SPI_T6963C_ClearBit	480
SPI_T6963C_SetBit	480
SPI_T6963C_NegBit	481
SPI_T6963C_DisplayGrPanel	481
SPI_T6963C_DisplayTxtPanel	481
SPI_T6963C_SetGrPanel	482
SPI_T6963C_SetTxtPanel	482