



Chipsmall Limited consists of a professional team with an average of over 10 year of expertise in the distribution of electronic components. Based in Hongkong, we have already established firm and mutual-benefit business relationships with customers from,Europe,America and south Asia,supplying obsolete and hard-to-find components to meet their specific needs.

With the principle of “Quality Parts,Customers Priority,Honest Operation,and Considerate Service”,our business mainly focus on the distribution of electronic components. Line cards we deal with include Microchip,ALPS,ROHM,Xilinx,Pulse,ON,Everlight and Freescale. Main products comprise IC,Modules,Potentiometer,IC Socket,Relay,Connector.Our parts cover such applications as commercial,industrial, and automotives areas.

We are looking forward to setting up business relationship with you and hope to provide you with the best service and solution. Let us make a better world for our industry!



Contact us

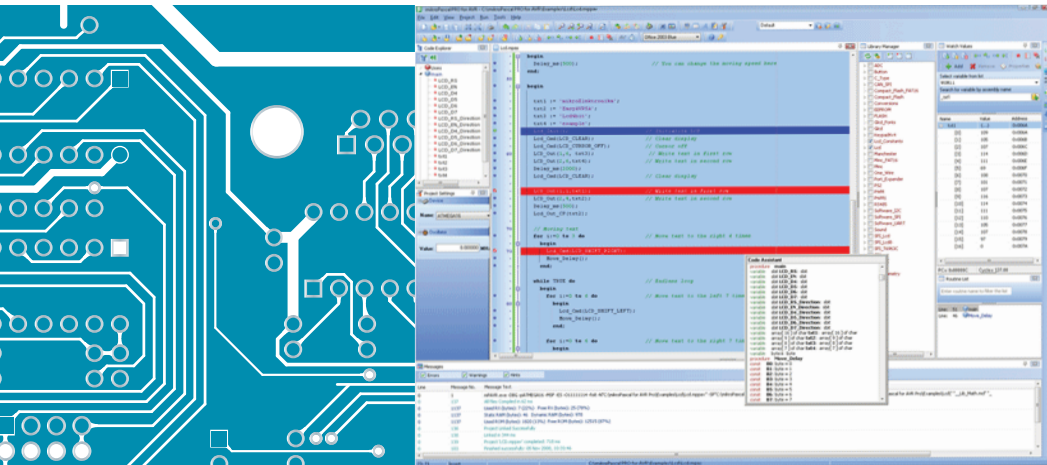
Tel: +86-755-8981 8866 Fax: +86-755-8427 6832

Email & Skype: info@chipsmall.com Web: www.chipsmall.com

Address: A1208, Overseas Decoration Building, #122 Zhenhua RD., Futian, Shenzhen, China



mikroPASCAL PRO for AVR



USER MANUAL

Develop your applications quickly and easily with the world's most intuitive mikroPascal PRO for AVR Microcontrollers.

Highly sophisticated IDE provides the power you need with the simplicity of a Windows based point-and-click environment.

With useful implemented tools, many practical code examples, broad set of built-in routines, and a comprehensive Help, mikroPascal PRO for AVR makes a fast and reliable tool, which can satisfy needs of experienced engineers and beginners alike.

May 2009.

Reader's note

DISCLAIMER:

mikroPASCAL PRO for AVR and this manual are owned by mikroElektronika and are protected by copyright law and international copyright treaty. Therefore, you should treat this manual like any other copyrighted material (e.g., a book). The manual and the compiler may not be copied, partially or as a whole without the written consent from the mikroElektronika. The PDF-edition of the manual can be printed for private or local use, but not for distribution. Modifying the manual or the compiler is strictly prohibited.

HIGH RISK ACTIVITIES:

The *mikroPASCAL PRO for AVR* compiler is not fault-tolerant and is not designed, manufactured or intended for use or resale as on-line control equipment in hazardous environments requiring fail-safe performance, such as in the operation of nuclear facilities, aircraft navigation or communication systems, air traffic control, direct life support machines, or weapons systems, in which the failure of the Software could lead directly to death, personal injury, or severe physical or environmental damage ("High Risk Activities"). mikroElektronika and its suppliers specifically disclaim any express or implied warranty of fitness for High Risk Activities.

LICENSE AGREEMENT:

By using the *mikroPASCAL PRO for AVR* compiler, you agree to the terms of this agreement. Only one person may use licensed version of *mikroPascal PRO for AVR* compiler at a time. Copyright © mikroElektronika 2003 - 2009.

This manual covers *mikroPASCAL PRO for AVR* version 1.2.5 and the related topics. Newer versions may contain changes without prior notice.

COMPILER BUG REPORTS:

The compiler has been carefully tested and debugged. It is, however, not possible to guarantee a 100 % error free product. If you would like to report a bug, please contact us at the address office@mikroe.com. Please include next information in your bug report:

- Your operating system
- Version of *mikroPASCAL PRO for AVR*
- Code sample
- Description of a bug

CONTACT US:

mikroElektronika
Voice: + 381 (11) 36 28 830
Fax: + 381 (11) 36 28 831
Web: www.mikroe.com
E-mail: office@mikroe.com

Windows is a Registered trademark of Microsoft Corp. All other trade and/or services marks are the property of the respective owners.

Table of Contents

- CHAPTER 1** Introduction
- CHAPTER 2** *mikroPASCAL PRO for AVR Environment*
- CHAPTER 3** mikroPASCAL PRO for AVR Specifics
- CHAPTER 4** AVR Specifics
- CHAPTER 5** *mikroPASCAL PRO for AVR Language Reference*
- CHAPTER 6** *mikroPASCAL PRO for AVR Libraries*

CHAPTER 1

Introduction to mikroPascal PRO for AVR	1
Features	2
Where to Start	3
mikroElektronika Associates License Statement and Limited Warranty	4
IMPORTANT - READ CAREFULLY	4
LIMITED WARRANTY	4
HIGH RISK ACTIVITIES	5
GENERAL PROVISIONS	6
Technical Support	7
How to Register	8
Who Gets the License Key	8
After Receiving the License Key	10
Notes:	10

CHAPTER 2

IDE Overview	12
Main Menu Options	13
File Menu Options	14
Edit Menu Options	15
Find Text	16
Replace Text	17
Find In Files	17
Go To Line	18
Regular expressions	18
View Menu Options	19
Toolbars	20
File Toolbar	20
Edit Toolbar	20
Advanced Edit Toolbar	21
Project Toolbar	22
Build Toolbar	22
Debugger	23
Styles Toolbar	23

Tools Toolbar	24
Project Menu Options	25
Run Menu Options	27
Tools Menu Options	29
Help Menu Option	30
Keyboard Shortcuts	31
IDE Overview	34
Customizing IDE Layout	36
Docking Windows	36
Saving Layout	37
Auto Hide	38
Advanced Code Editor	39
Advanced Editor Features	39
Code Assistant	40
Code Folding	41
Parameter Assistant	42
Code Templates (Auto Complete)	42
Auto Correct	42
Spell Checker	43
Bookmarks	43
Goto Line	43
Comment / Uncomment	43
Code Explorer	44
Routine List	45
Project Manager	46
Project Settings Window	48
Library Manager	49
Error Window	51
Statistics	52
Memory Usage Windows	52
RAM Memory	52
Rx Memory Space	52
Data Memory Space	53
Special Function Registers	53
General Purpose Registers	54
ROM Memory	54

ROM Memory Usage	54
ROM Memory Allocation	55
Procedures Windows	55
Procedures Size Window	55
Procedures Locations Window	56
HTML Window	56
Integrated Tools	57
USART Terminal	57
ASCII Chart	58
EEPROM Editor	59
7 Segment Display Decoder	60
UDP Terminal	61
Graphic Lcd Bitmap Editor	62
Lcd Custom Character	63
Macro Editor	64
Options	65
Code editor	65
Tools	65
Output settings	66
Regular Expressions	67
Introduction	67
Simple matches	67
Escape sequences	67
Character classes	68
Metacharacters	68
Metacharacters - Line separators	68
Metacharacters - Predefined classes	69
Metacharacters - Word boundaries	69
Metacharacters - Iterators	70
Metacharacters - Alternatives	71
Metacharacters - Subexpressions	71
Metacharacters - Backreferences	71
mikroPascal PRO for AVR Command Line Options	72
Projects	73
New Project	73
New Project Wizard Steps	74

Customizing Projects	77
Edit Project	77
Managing Project Group	77
Add/Remove Files from Project	77
Project Level Defines	79
Source Files	80
Managing Source Files	80
Creating new source file	80
Opening an existing file	80
Printing an open file	80
Saving file	81
Saving file under a different name	81
Closing file	81
Clean Project Folder	82
Clean Project Folder	82
Compilation	83
Output Files	83
Assembly View	83
Warning Messages:	85
Hint Messages:	85
Software Simulator Overview	86
Watch Window	86
Stopwatch Window	88
RAM Window	89
Software Simulator Options	90
Creating New Library	91
Multiple Library Versions	92
 CHAPTER 3	
Pascal Standard Issues	94
Divergence from the Pascal Standard	94
Pascal Language Extensions	94
Predefined Globals and Constants	95
Math constants	95
Predefined project level defines	95

Accessing Individual Bits	96
Accessing Individual Bits Of Variables	96
sbit type	96
bit type	97
Interrupts	98
Function Calls from Interrupt	98
Linker Directives	100
Directive absolute	100
Directive org	101
Built-in Routines	102
Lo	102
Hi	103
Higher	103
Highest	103
Inc	104
Dec	104
Delay_us	104
Delay_ms	105
Vdelay_ms	105
Delay_Cyc	105
Clock_KHz	106
Clock_MHz	106
SetFuncCall	106
Code Optimization	107
Constant folding	107
Constant propagation	107
Copy propagation	107
Value numbering	107
"Dead code" elimination	107
Stack allocation	107
Local vars optimization	107
Better code generation and local optimization	107
Types Efficiency	109

CHAPTER 4

Nested Calls Limitations	110
Important notes:	110
AVR Memory Organization	111
Program Memory (ROM)	111
Data Memory	112
Memory Type Specifiers	114
code	114
data	114
rx	114
io	115
sfr	115
register	115

CHAPTER 5

mikroPascal PRO for AVR Language Reference	118
Lexical Elements Overview	120
Whitespace	120
Whitespace in Strings	120
Nested comments	121
Tokens	122
Token Extraction Example	122
Literals	123
Integer Literals	123
Floating Point Literals	123
Character Literals	124
String Literals	124
Keywords	125
Identifiers	126
Case Sensitivity	126
Uniqueness and Scope	126
Identifier Examples	126
Punctuators	127
Brackets	127

Parentheses	127
Comma	127
Semicolon	128
Colon	128
Dot	128
Program Organization	129
Organization of Main Unit	129
Organization of Other Units	130
Scope and Visibility	132
Scope	132
Visibility	132
Units	133
Uses Clause	133
Main Unit	134
Other Units	134
Interface Section	134
Implementation Section	135
Variables	136
Variables and AVR	136
Constants	137
Labels	138
Functions and Procedures	139
Functions	139
Calling a function	139
Example	140
Procedures	140
Calling a procedure	140
Example	141
Example:	141
Forward declaration	142
Types	143
Type Categories	143
Simple Types	144
Arrays	145
Array Declaration	145
Constant Arrays	145

Multi-dimensional Arrays	146
Strings	147
String Concatenating	148
Note	148
Pointers	149
Function Pointers	149
Example:	149
@ Operator	150
Records	151
Accessing Fields	152
Types Conversions	153
Implicit Conversion	153
Promotion	153
Clipping	153
Explicit Conversion	154
Conversions Examples	154
Operators	155
Operators Precedence and Associativity	156
Arithmetic Operators	156
Division by Zero	157
Unary Arithmetic Operators	157
Relational Operators	157
Relational Operators in Expressions	157
Bitwise Operators	158
Bitwise Operators Overview	158
Logical Operations on Bit Level	158
Unsigned and Conversions	159
Signed and Conversions	159
Bitwise Shift Operators	160
Boolean Operators	160
Expressions	161
Statements	162
Assignment Statements	163
Compound Statements (Blocks)	163
Conditional Statements	163
If Statement	164

Nested if statements	164
Case statement	165
Nested Case statement	166
Iteration Statements	167
For Statement	168
Endless Loop	168
While Statement	169
Repeat Statement	170
Jump Statements	171
Break and Continue Statements	172
Break Statement	172
Continue Statement	172
Exit Statement	173
Goto Statement	174
asm Statement	175
Directives	176
Compiler Directives	177
Directives \$DEFINE and \$UNDEFINE	177
Directives \$IFDEF..\$ELSE	177
Include Directive \$I	178
Predefined Flags	178
Linker Directives	179
Directive absolute	179
Directive org	179

CHAPTER 6

Hardware AVR-specific Libraries	182
Miscellaneous Libraries	182
Library Dependencies	183
ADC Library	185
ADC_Read	185
HW Connection	186
External dependencies of CANSPI Library	187
Library Routines	188
CANSPISetOperationMode	188

CANSPIGetOperationMode	189
CANSPIInitialize	189
CANSPISetBaudRate	191
CANSPISetMask	192
CANSPISetFilter	193
CANSPIRead	194
CANSPIWrite	195
CANSPI Constants	195
CANSPI_OP_MODE	196
CANSPI_CONFIG_FLAGS	196
CANSPI_TX_MSG_FLAGS	197
CANSPI_RX_MSG_FLAGS	197
CANSPI_MASK	198
CANSPI_FILTER	198
Library Example	198
HW Connection	202
Compact Flash Library	203
External dependencies of Compact Flash Library	204
Library Routines	205
Cf_Init	205
Cf_Detect	207
Cf_Enable	207
Cf_Disable	207
Cf_Read_Init	208
Cf_Read_Byte	208
Cf_Write_Init	209
Cf_Write_Byte	209
Cf_Read_Sector	210
Cf_Write_Sector	210
Cf_Fat_Init	211
Cf_Fat_QuickFormat	211
Cf_Fat_Assign	212
Cf_Fat_Reset	213
Cf_Fat_Read	213
Cf_Fat_Rewrite	214
Cf_Fat_Append	214

Cf_Fat_Delete	214
Cf_Fat_Write	215
Cf_Fat_Set_File_Date	216
Cf_Fat_Get_File_Date	217
Cf_Fat_Get_File_Size	217
Cf_Fat_Get_Swap_File	218
HW Connection	226
EEPROM Library	227
Library Routines	227
EEPROM_Read	227
EEPROM_Write	228
Library Example	228
Flash Memory Library	230
Library Routines	230
FLASH_Read_Byte	230
FLASH_Read_Bytes	231
FLASH_Read_Word	231
FLASH_Read_Words	232
Library Example	232
Graphic Lcd Library	234
External dependencies of Graphic Lcd Library	234
Library Routines	235
Glcd_Init	236
Glcd_Set_Side	237
Glcd_Set_X	237
Glcd_Set_Page	238
Glcd_Read_Data	238
Glcd_Write_Data	239
Glcd_Fill	239
Glcd_Dot	240
Glcd_Line	240
Glcd_V_Line	241
Glcd_H_Line	241
Glcd_Rectangle	242
Glcd_Box	242
Glcd_Circle	243

Glcd_Set_Font	243
Glcd_Write_Char	244
Glcd_Write_Text	245
Glcd_Image	245
Library Example	246
HW Connection	248
Keypad Library	249
External dependencies of Keypad Library	249
Library Routines	249
Keypad_Init	249
Keypad_Key_Press	250
Keypad_Key_Click	250
Library Example	250
HW Connection	253
External dependencies of Lcd Library	254
Library Routines	254
Lcd_Init	255
Lcd_Out	256
Lcd_Out_Cp	256
Lcd_Chr	257
Lcd_Chr_Cp	257
Lcd_Cmd	258
Available Lcd Commands	258
Library Example	259
HW connection	261
Manchester Code Library	262
External dependencies of Manchester Code Library	262
Library Routines	263
Man_Receive_Init	263
Man_Receive	264
Man_Send_Init	264
Man_Send	265
Man_Synchro	265
Man_Break	266
Library Example	267
Connection Example	269

Multi Media Card Library	271
Secure Digital Card	271
External dependencies of MMC Library	271
Library Routines	272
Mmc_Init	273
Mmc_Read_Sector	274
Mmc_Write_Sector	274
Mmc_Read_Cid	275
Mmc_Read_Csd	275
Mmc_Fat_Init	276
Mmc_Fat_QuickFormat	277
Mmc_Fat_Assign	278
Mmc_Fat_Reset	279
Mmc_Fat_Read	279
Mmc_Fat_Rewrite	280
Mmc_Fat_Append	280
Mmc_Fat_Delete	280
Mmc_Fat_Write	281
Mmc_Fat_Set_File_Date	282
Mmc_Fat_Get_File_Date	283
Mmc_Fat_Get_File_Size	283
Mmc_Fat_Get_Swap_File	284
Library Example	286
HW Connection	294
OneWire Library	295
External dependencies of OneWire Library	295
Library Routines	295
Ow_Reset	296
Ow_Read	297
Ow_Write	298
Library Example	298
HW Connection	301
Port Expander Library	302
External dependencies of Port Expander Library	302
Library Routines	302
Expander_Init	303

Expander_Read_Byte	304
Expander_Write_Byte	304
Expander_Read_PortA	305
Expander_Read_PortB	305
Expander_Read_PortAB	306
Expander_Write_PortA	306
Expander_Write_PortB	307
Expander_Write_PortAB	308
Expander_Set_DirectionPortA	308
Expander_Set_DirectionPortB	309
Expander_Set_DirectionPortAB	309
Expander_Set_PullUpsPortA	310
Expander_Set_PullUpsPortB	310
Expander_Set_PullUpsPortAB	311
Library Example	311
HW Connection	313
Port Expander HW connection	313
PS/2 Library	314
External dependencies of PS/2 Library	314
Library Routines	314
Ps2_Config	315
Ps2_Key_Read	316
Special Function Keys	317
Library Example	318
HW Connection	319
PWM Library	320
Library Routines	320
Predefined constants used in PWM library	320
PWM_Init	323
PWM_Set_Duty	324
PWM_Start	324
PWM_Stop	325
PWM1_Init	325
PWM1_Set_Duty	327
PWM1_Start	327
PWM1_Stop	327

Library Example	328
HW Connection	329
PWM 16 bit Library	330
Library Routines	330
Predefined constants used in PWM-16bit library	330
PWM16bit_Init	332
PWM16bit_Change_Duty	334
PWM16bit_Start	334
PWM16bit_Stop	335
Library Example	335
HW Connection	337
RS-485 Library	338
External dependencies of RS-485 Library	339
Library Routines	339
RS485Master_Init	340
RS485Master_Receive	341
RS485Master_Send	342
RS485Slave_Init	343
RS485slave_Receive	344
RS485Slave_Send	344
Library Example	345
HW Connection	349
Message format and CRC calculations	350
Software I ₂ C Library	351
External dependencies of Soft_I ₂ C Library	351
Soft_I ₂ C_Init	352
Soft_I ₂ C_Start	353
Soft_I ₂ C_Read	353
Soft_I ₂ C_Write	354
Soft_I ₂ C_Stop	354
Soft_I ₂ C_Break	355
Library Example	356
Software SPI Library	359
External dependencies of Software SPI Library	359
Soft_SPI_Init	360
Soft_SPI_Read	361

Soft_SPI_Write	361
Library Example	362
Software UART Library	364
External dependencies of Software UART Library	364
Soft_UART_Init	365
Soft_UART_Read	366
Soft_UART_Write	367
Soft_UART_Break	368
Library Example	369
Sound Library	370
External dependencies of Sound Library	370
Library Routines	370
Sound_Init	370
Sound_Play	371
Library Example	371
HW Connection	373
SPI Library	374
SPI1_Init	374
SPI1_Init_Advanced	375
SPI1_Read	376
SPI1_Write	376
Library Example	377
HW Connection	379
SPI Ethernet Library	380
External dependencies of SPI Ethernet Library	381
Library Routines	382
Spi_Ethernet_Init	382
Spi_Ethernet_Enable	383
Spi_Ethernet_Disable	385
Spi_Ethernet_doPacket	386
Spi_Ethernet_putByte	387
Spi_Ethernet_putBytes	387
Spi_Ethernet_putConstBytes	388
Spi_Ethernet_putString	388
Spi_Ethernet_putConstString	389
Spi_Ethernet_getByte	389

Spi_Ethernet_getBytes	390
Spi_Ethernet_UserTCP	390
Spi_Ethernet_UserUDP	391
Library Example	391
HW Connection	400
SPI Graphic Lcd Library	401
External dependencies of SPI Graphic Lcd Library	401
Library Routines	401
SPI_Glcd_Init	402
SPI_Glcd_Set_Side	403
SPI_Glcd_Set_Page	403
SPI_Glcd_Set_X	404
SPI_Glcd_Read_Data	404
SPI_Glcd_Write_Data	405
SPI_Glcd_Fill	405
SPI_Glcd_Dot	406
SPI_Glcd_Line	406
SPI_Glcd_V_Line	407
SPI_Glcd_H_Line	407
SPI_Glcd_Rectangle	408
SPI_Glcd_Box	408
SPI_Glcd_Circle	409
SPI_Glcd_Set_Font	409
SPI_Glcd_Write_Char	410
SPI_Glcd_Write_Text	411
SPI_Glcd_Image	411
Library Example	412
HW Connection	414
SPI Lcd Library	415
External dependencies of SPI Lcd Library	415
Library Routines	415
SPI_Lcd_Config	416
SPI_Lcd_Out	417
SPI_Lcd_Out_Cp	417
SPI_Lcd_Chr	418
SPI_Lcd_Chr_Cp	418

SPI_Lcd_Cmd	419
Available SPI Lcd Commands	419
Library Example	420
HW Connection	421
SPI Lcd8 (8-bit interface) Library	422
External dependencies of SPI Lcd Library	422
Library Routines	422
SPI_Lcd8_Config	423
SPI_Lcd8_Out	424
SPI_Lcd8_Out_Cp	424
SPI_Lcd8_Chr	425
SPI_Lcd8_Chr_Cp	425
SPI_Lcd8_Cmd	426
Available SPI Lcd8 Commands	426
Library Example	427
HW Connection	428
SPI T6963C Graphic Lcd Library	429
External dependencies of SPI T6963C Graphic Lcd Library	429
Library Routines	430
SPI_T6963C_Config	431
SPI_T6963C_WriteData	432
SPI_T6963C_WriteCommand	433
SPI_T6963C_SetPtr	433
SPI_T6963C_WaitReady	433
SPI_T6963C_Fill	434
SPI_T6963C_Dot	434
SPI_T6963C_Write_Char	435
SPI_T6963C_Write_Text	436
SPI_T6963C_Line	437
SPI_T6963C_Rectangle	437
SPI_T6963C_Box	438
SPI_T6963C_Circle	438
SPI_T6963C_Image	439
SPI_T6963C_Sprite	439
SPI_T6963C_Set_Cursor	440
SPI_T6963C_ClearBit	440

SPI_T6963C_SetBit	440
SPI_T6963C_NegBit	441
SPI_T6963C_DisplayGrPanel	441
SPI_T6963C_DisplayTxtPanel	441
SPI_T6963C_SetGrPanel	442
SPI_T6963C_SetTxtPanel	442
SPI_T6963C_PanelFill	442
SPI_T6963C_GrFill	443
SPI_T6963C_TxtFill	443
SPI_T6963C_Cursor_Height	443
SPI_T6963C_Graphics	444
SPI_T6963C_Text	444
SPI_T6963C_Cursor	444
SPI_T6963C_Cursor_Blink	445
Library Example	445
HW Connection	450
T6963C Graphic Lcd Library	451
External dependencies of T6963C Graphic Lcd Library	452
Library Routines	453
T6963C_Init	454
T6963C_WriteData	456
T6963C_WriteCommand	456
T6963C_SetPtr	456
T6963C_WaitReady	457
T6963C_Fill	457
T6963C_Dot	457
T6963C_Write_Char	458
T6963C_Write_Text	459
T6963C_Line	460
T6963C_Rectangle	460
T6963C_Box	461
T6963C_Circle	461
T6963C_Image	462
T6963C_Sprite	462
T6963C_Set_Cursor	463
T6963C_DisplayGrPanel	463

T6963C_DisplayTxtPanel	463
T6963C_SetGrPanel	464
T6963C_SetTxtPanel	464
T6963C_PanelFill	464
T6963C_GrFill	465
T6963C_TxtFill	465
T6963C_Cursor_Height	465
T6963C_Graphics	466
T6963C_Text	466
T6963C_Cursor	466
T6963C_Cursor_Blink	467
Library Example	467
HW Connection	472
T6963C Glcd HW connection	472
Library Routines	473
TWI_Init	473
TWI_Busy	473
TWI_Start	474
TWI_Read	474
TWI_Write	474
TWI_Stop	475
TWI_Status	475
TWI_Close	475
Library Example	476
HW Connection	476
UART Library	477
Library Routines	477
UARTx_Init	478
UARTx_Init_Advanced	479
UARTx_Data_Ready	479
UARTx_Read	480
UARTx_Read_Text	480
UARTx_Write	481
UARTx_Write_Text	481
Library Example	482
HW Conection	483

Button Library	484
External dependencies of Button Library	484
Library Routines	484
Button	484
Conversions Library	486
Library Routines	486
ByteToStr	486
ShortToStr	487
WordToStr	487
IntToStr	488
LongintToStr	488
LongWordToStr	489
FloatToStr	490
Dec2Bcd	490
Bcd2Dec16	491
Dec2Bcd16	491
Math Library	492
Library Functions	492
acos	492
asin	492
atan	493
atan2	493
ceil	493
cos	493
cosh	493
eval_poly	493
exp	493
fabs	494
frexp	494
ldexp	494
log	494
log10	494
modf	494
pow	494
sin	495
sinh	495

sqrt	495
tan	495
tanh	495
String Library	496
Library Functions	496
memchr	496
memcmp	497
memcpy	497
memmove	497
memset	498
strcat	498
strchr	498
strcmp	498
strcpy	499
strcspn	499
strlen	499
strncat	499
strncmp	499
strncpy	500
strpbrk	500
strrchr	500
strspn	500
strstr	500
Time Library	501
Library Routines	501
Time_dateToEpoch	501
Time_epochToDate	502
Time_dateDiff	502
Library Example	503
TimeStruct type definition	503
Trigonometry Library	504
Library Routines	504
sinE3	504
cosE3	505