



Chipsmall Limited consists of a professional team with an average of over 10 year of expertise in the distribution of electronic components. Based in Hongkong, we have already established firm and mutual-benefit business relationships with customers from,Europe,America and south Asia,supplying obsolete and hard-to-find components to meet their specific needs.

With the principle of “Quality Parts,Customers Priority,Honest Operation,and Considerate Service”,our business mainly focus on the distribution of electronic components. Line cards we deal with include Microchip,ALPS,ROHM,Xilinx,Pulse,ON,Everlight and Freescale. Main products comprise IC,Modules,Potentiometer,IC Socket,Relay,Connector.Our parts cover such applications as commercial,industrial, and automotives areas.

We are looking forward to setting up business relationship with you and hope to provide you with the best service and solution. Let us make a better world for our industry!



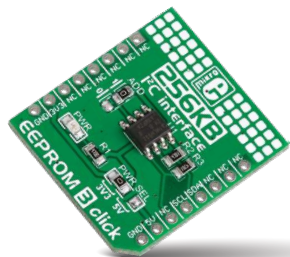
Contact us

Tel: +86-755-8981 8866 Fax: +86-755-8427 6832

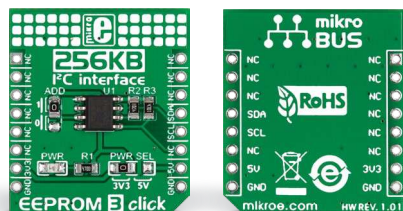
Email & Skype: info@chipsmall.com Web: www.chipsmall.com

Address: A1208, Overseas Decoration Building, #122 Zhenhua RD., Futian, Shenzhen, China





EEPROM 3 click

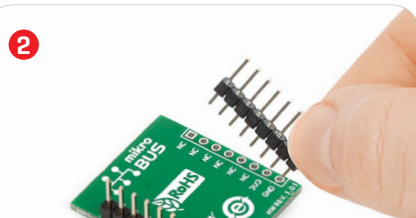
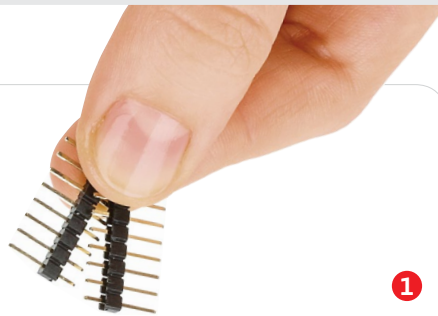


1. Introduction

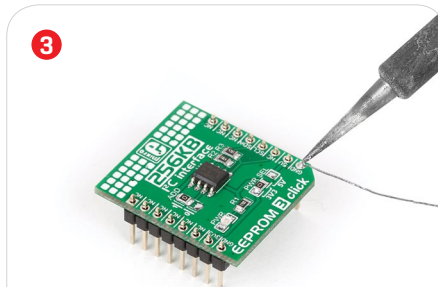
EEPROM 3 click carries Atmel's **AT24CM02** DIP-8 socket EEPROM chip with 256 KB of memory. The board communicates with the target MCU through the mikroBUS™ I2C interface [SCL, SDA pins] with speeds up to 1 MHz. The chip allows for an entire page of data [256 bytes] to be written in a single Write cycle. The board is designed to use either a 3.3V or a 5V power supply. A onboard LED will indicate the presence of a power supply.

2. Soldering the headers

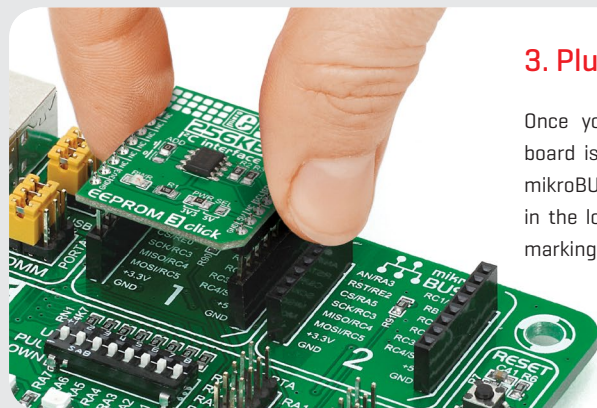
Before using your click board™, make sure to solder 1x8 male headers to both left and right side of the board. Two 1x8 male headers are included with the board in the package.



Turn the board upside down so that the bottom side is facing you upwards. Place shorter pins of the header into the appropriate soldering pads.

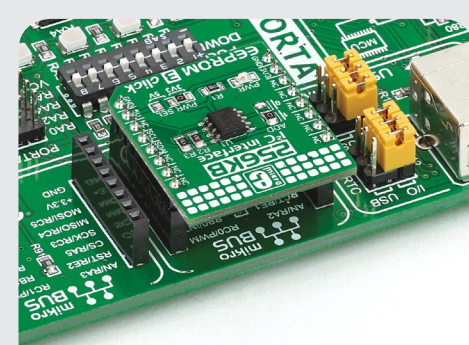


Turn the board upward again. Make sure to align the headers so that they are perpendicular to the board, then solder the pins carefully.



3. Plugging the board in

Once you have soldered the headers your board is ready to be placed into the desired mikroBUS™ socket. Make sure to align the cut in the lower-right part of the board with the markings on the silkscreen at the mikroBUS™ socket. If all the pins are aligned correctly, push the board all the way into the socket.



4. Essential features

The AT24CM02 device has byte and page write speeds equal or less than 10 ms. The chip is specified for million write cycles, with more than 100 years of data retention. The I2C interface operates at 100kHz in standard mode, 400kHz in Fast mode and 1 MHz in Fast mode plus [FM+]. The selectable I2C address allows you to connect two EEPROM 3 clicks to the same I2C bus, for a total of 512KB of memory. The memory is organized as 262144 x 8 bits. EEPROM 3 click is suitable for storing initialization and configuration data in your designs.

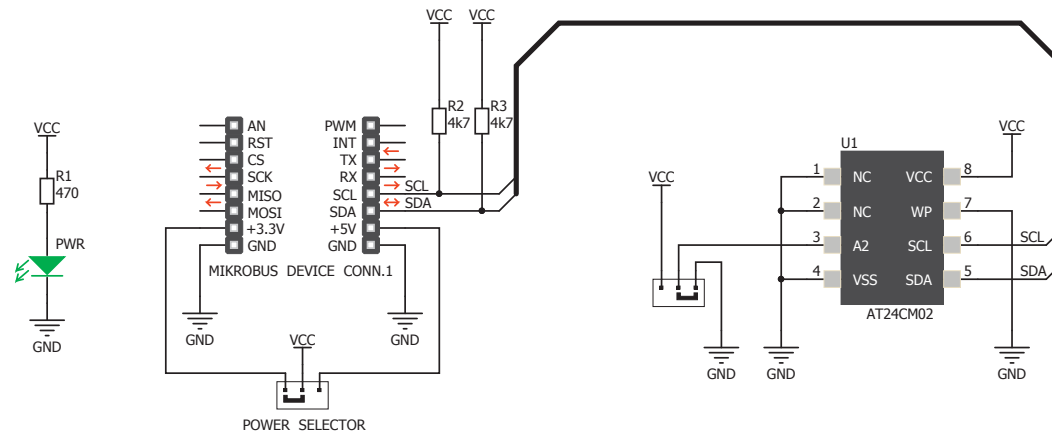


EEPROM 3 click Manual v1.01

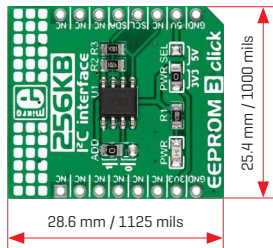


010000092262

5. Schematic



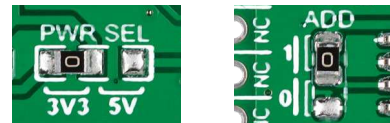
6. Dimensions



	mm	mils
LENGTH	28.6	1125
WIDTH	25.4	1000
HEIGHT*	3.3	130

* without headers

7. SMD jumper



EEPROM3 click features an SMD jumper (zero ohm resistor) that lets you switch between a 3.3V or a 5V power supply. Another jumper, marked ADD, is for setting the I2C address.

8. Code examples

Once you have done all the necessary preparations, it's time to get your click board™ up and running. We have provided examples for mikroC™, mikroBasic™ and mikroPascal™ compilers on our **Libstock** website. Just download them and you are ready to start.



9. Support

MikroElektronika offers **free tech support** (www.mikroe.com/support) until the end of the product's lifetime, so if something goes wrong, we're ready and willing to help!



10. Disclaimer

MikroElektronika assumes no responsibility or liability for any errors or inaccuracies that may appear in the present document. Specification and information contained in the present schematic are subject to change at any time without notice.

Copyright © 2015 MikroElektronika.
All rights reserved.