



Chipsmall Limited consists of a professional team with an average of over 10 year of expertise in the distribution of electronic components. Based in Hongkong, we have already established firm and mutual-benefit business relationships with customers from,Europe,America and south Asia,supplying obsolete and hard-to-find components to meet their specific needs.

With the principle of “Quality Parts,Customers Priority,Honest Operation,and Considerate Service”,our business mainly focus on the distribution of electronic components. Line cards we deal with include Microchip,ALPS,ROHM,Xilinx,Pulse,ON,Everlight and Freescale. Main products comprise IC,Modules,Potentiometer,IC Socket,Relay,Connector.Our parts cover such applications as commercial,industrial, and automotives areas.

We are looking forward to setting up business relationship with you and hope to provide you with the best service and solution. Let us make a better world for our industry!



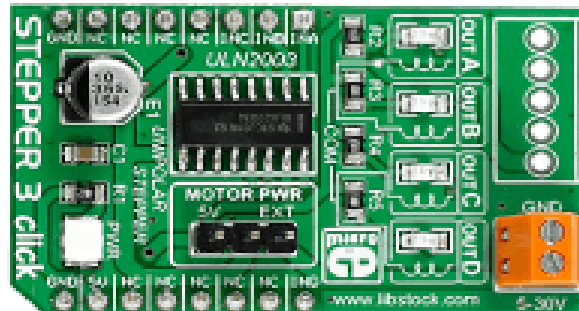
Contact us

Tel: +86-755-8981 8866 Fax: +86-755-8427 6832

Email & Skype: info@chipsmall.com Web: www.chipsmall.com

Address: A1208, Overseas Decoration Building, #122 Zhenhua RD., Futian, Shenzhen, China





Stepper 3 click

Stepper 3 click is a mikroBUS™ add-on board for driving unipolar stepper motors with precise controls (individual motor phases can be accessed separately).

The board carries a Texas Instruments ULN2003 High-Current Darlington transistor array for operating the motors.

Motors are connected through a 4-pin male connector on the top of the PCB. They can be driven by the click board's own power supply, or with an external power supply which can be brought through onboard screw terminals (up to 30V).

Stepper 3 click communicates with the target board MCU through mikroBUS™ PWM, AN, RST and CS pins (here used for individual motor phases, marked INA, INB, INC, IND).

The board is designed to use a 5V power supply only.

Technical Specifications

Applications

Board step motors in full-, half-, quarter-, eighth- and sixteenth-step modes.

Key features

ULN2003 High-Current Darlington transistor array
Connector for external power supply up to 30V
Interface: INA-IND in place of AN, RST, CS, PWM
5V power supply

Key Benefits

Precise motor control: individual phases can be accessed separately
Ready-to-use examples save development time
Works in all MikroElektronika compilers



mikroBUS™ is specially designed pinout standard with SPI, I2C, Analog, UART, Interrupt, PWM, Reset and Power supply pins. See Standard Specification.

Features and usage notes

The board carries a Texas Instruments ULN2003 High-Current Darlington transistor array for operating the motors.

Motors are connected through a 4-pin male connector on the top of the PCB. They can be driven by the click board's own power supply, or with an external power supply which can be brought through onboard screw terminals (up to 30V). An onboard jumper allows you to switch between the internal or external power supply.

Stepper 3 click communicates with the target board MCU through mikroBUS™ PWM, AN, RST and CS pins (here used for individual motor phases, marked INA, INB, INC, IND).

The board is designed to use a 5V power supply only.

Programming

This snippet sets up and runs the stepper motor at 30 steps per second.

```
1 void main()
2 {
3   stepper_init( 0.72. false. false. true );
4   stepper_init_fp( forward, backward );
5   stepper_set_max_speed( 30.0 );
6   stepper_set_speed( 30.0 );
7
8   while( 1 )
9   {
10    stepper_run_speed();
11  }
12 }
```

Code examples that demonstrate the usage of Stepper 3 click with MikroElektronika hardware, written for mikroC for ARM, AVR, dsPIC, FT90x, PIC and PIC32 are available on Libstock.

MIKROE-2035 Stepper 3 click

Copyright © 1998 - 2016. MikroElektronika d.o.o.