



Chipsmall Limited consists of a professional team with an average of over 10 year of expertise in the distribution of electronic components. Based in Hongkong, we have already established firm and mutual-benefit business relationships with customers from,Europe,America and south Asia,supplying obsolete and hard-to-find components to meet their specific needs.

With the principle of “Quality Parts,Customers Priority,Honest Operation,and Considerate Service”,our business mainly focus on the distribution of electronic components. Line cards we deal with include Microchip,ALPS,ROHM,Xilinx,Pulse,ON,Everlight and Freescale. Main products comprise IC,Modules,Potentiometer,IC Socket,Relay,Connector.Our parts cover such applications as commercial,industrial, and automotives areas.

We are looking forward to setting up business relationship with you and hope to provide you with the best service and solution. Let us make a better world for our industry!



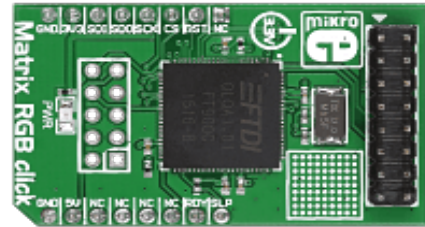
## Contact us

Tel: +86-755-8981 8866 Fax: +86-755-8427 6832

Email & Skype: info@chipsmall.com Web: www.chipsmall.com

Address: A1208, Overseas Decoration Building, #122 Zhenhua RD., Futian, Shenzhen, China





## Matrix RGB click

Matrix RGB click is a mikroBUS™ add-on board powered by a 32-bit FT900 MCU designed specifically for powering 16x32 RGB LED matrices.

The board has a 16 wire IDC connector for connecting to a single 16x32 LED panel; however, the firmware inside the FT900x chip can drive more than one panel.

Multiple panels can be connected to each other into a daisy-chain configuration (see the video). Matrix RGB click communicates with the target MCU through the SPI interface. It uses a 3.3V power supply only.

Complete **kits** with Matrix RGB click, a single 32x32 RGB LED matrix panel (consisting of two 16x32 matrices joined together), and a power supply unit are available to order.

Alternatively, panels and power supplies can be purchased separately.

## Technical Specifications

### Applications

Driving up to 16 16x32 RGB LED panels (more than 32 is possible, but flickering may occur).

### Key features

- Can drive up to 16 panels of 16x32 RGB LEDs
- Removes the load from the host MCU
- Microcontroller can be accessed through separate IDC connector
- Ready-to-use examples save development time

## Don't forget

However powerful, Matrix RGB click is only a driver board, and you need to have one or more RGB panels and a power adapter to see the output. Make sure you add them to your cart along side with the click.

MIKROE-2239

**Matrix RGB click**