



Chipsmall Limited consists of a professional team with an average of over 10 year of expertise in the distribution of electronic components. Based in Hongkong, we have already established firm and mutual-benefit business relationships with customers from,Europe,America and south Asia,supplying obsolete and hard-to-find components to meet their specific needs.

With the principle of “Quality Parts,Customers Priority,Honest Operation,and Considerate Service”,our business mainly focus on the distribution of electronic components. Line cards we deal with include Microchip,ALPS,ROHM,Xilinx,Pulse,ON,Everlight and Freescale. Main products comprise IC,Modules,Potentiometer,IC Socket,Relay,Connector.Our parts cover such applications as commercial,industrial, and automotives areas.

We are looking forward to setting up business relationship with you and hope to provide you with the best service and solution. Let us make a better world for our industry!



Contact us

Tel: +86-755-8981 8866 Fax: +86-755-8427 6832

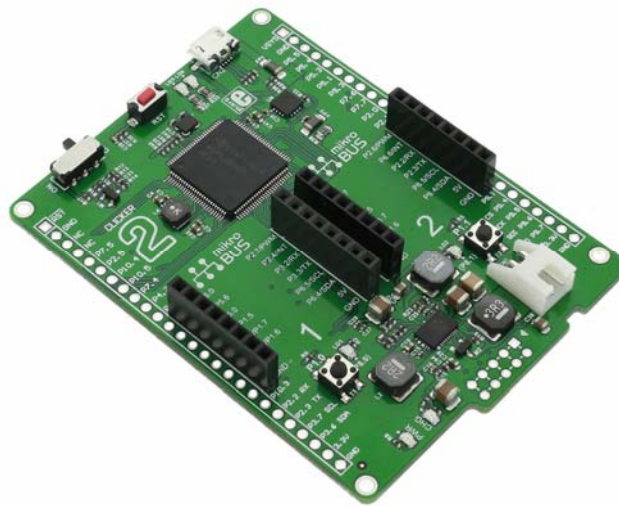
Email & Skype: info@chipsmall.com Web: www.chipsmall.com

Address: A1208, Overseas Decoration Building, #122 Zhenhua RD., Futian, Shenzhen, China



Clicker 2 for MSP432

PID: MIKROE-2502



Clicker 2 for MSP432 is a compact development board with two mikroBUS™ sockets for click board connectivity. It carries the SimpleLink™ MSP432™ - ARM® 32-Bit Cortex®-M4F CPU with integrated 1Msps 14-bit SAR-based ADC from **Texas Instruments**.

Everything you need to get started

The board features everything you need to get started: a 32-bit SimpleLink™ MSP432™ microcontroller, micro USB connector, two mikroBUS™ sockets, two LEDs and push buttons, reset button and headers for interfacing with external electronics.

MSP432™ microcontroller

The SimpleLink™ MSP432™ microcontroller is ultra-low-power microcontrollers with high performance processing capabilities and high-precision analog integration optimized for as host MCU for wireless connectivity, sensing and measurement.

The SimpleLink™ MSP432™ MCUs feature the ARM Cortex-M4 processor in a wide configuration of device options including a rich set of high-precision analog, timing, and communication peripherals, thereby catering to a large number of application scenarios where both efficient data processing and enhanced low-power operation are paramount.

The MCU has 256KB of Flash Main Memory (Organized Into Two Banks Enabling Simultaneous Read/Execute During Erase). 16KB of Flash Information Memory (Used for BSL, TLV, and Flash Mailbox). Up to 64KB of SRAM (Including 6KB of Backup Memory). 32KB of ROM With MSP432™ Peripheral Driver Libraries.

Hundreds of possibilities with click boards™

Take advantage of the constantly expanding range of over 270 click boards™ - the onboard mikroBUS™ sockets allows you to add new functionality to your project. Each click board™ comes with a set of working example code.

Just think about it, 270 click boards give you more than 36000 combinations to choose from.

Choose two clicks that suit your project the most, and you're half-way done. Have fun and play, mix and match.

Programming

To make your prototyping experience as convenient as possible, clicker 2 for MSP432 is preprogrammed with a UART bootloader. Just download our mikroBootloader application and you're ready to upload your firmware. On-board mikroProg for MSP432 connector enables programming through external programmer/debugger.

Product Type	ARM
Applications	This compact board brings the flexibility of click add-on boards to your favorite microcontroller, making it a perfect starter kit for implementing your ideas.
Architecture	ARM (32-bit)
MCU	MSP432 from Texas Instruments
MCU Memory	256KB of Flash Main Memory, 64KB of SRAM
On-board modules	1 x USB MINI-B connector, 2 x LEDs, 2 x push buttons, 1 x reset button
Expandability	two mikroBUS sockets