

Chipsmall Limited consists of a professional team with an average of over 10 year of expertise in the distribution of electronic components. Based in Hongkong, we have already established firm and mutual-benefit business relationships with customers from,Europe,America and south Asia,supplying obsolete and hard-to-find components to meet their specific needs.

With the principle of “Quality Parts,Customers Priority,Honest Operation,and Considerate Service”,our business mainly focus on the distribution of electronic components. Line cards we deal with include Microchip,ALPS,ROHM,Xilinx,Pulse,ON,Everlight and Freescale. Main products comprise IC,Modules,Potentiometer,IC Socket,Relay,Connector.Our parts cover such applications as commercial,industrial, and automotives areas.

We are looking forward to setting up business relationship with you and hope to provide you with the best service and solution. Let us make a better world for our industry!



## Contact us

Tel: +86-755-8981 8866 Fax: +86-755-8427 6832

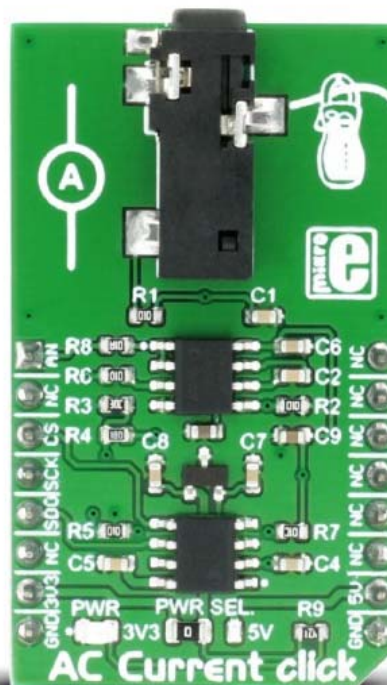
Email & Skype: [info@chipsmall.com](mailto:info@chipsmall.com) Web: [www.chipsmall.com](http://www.chipsmall.com)

Address: A1208, Overseas Decoration Building, #122 Zhenhua RD., Futian, Shenzhen, China

# AC Current click

PID: MIKROE-2523

Weight: 27 g



**AC Current click** can measure alternating currents **up to 30A** and it features the MCP3201 ADC (analog to digital) converter and the MCP607 CMOS Op Amp, both from Microchip. The click is designed to run on either 3.3V or 5V power supply. It communicates with the target MCU over an SPI interface, and the AN pin on the mikroBUS™ line.

AC Current click can only be used for sensors with voltage output (30A input current – 1V output voltage amplitude). If someone wants to measure current with a sensor for a different range (10A or 100A), then it is necessary to change the multiplication constant in firmware.

**Note:** This click board can be used for measuring current from a High-Voltage alternating source, so it is important to know that there is danger from electric shock.

**Note:** AC Current click does not include the non-invasive AC current sensor. Take a look at the AC Current click - bundle, if you want to buy both the sensor and the click.

## MCP3201 ADC converter

MCP3210 ADC converter is a 12-bit Analog-to-Digital converter. The device provides a single pseudo-differential input.

The converter is capable of sample rates of up to 100 ksp/s at a clock rate of 1.6 MHz. The MCP3201 device operates over a broad voltage range (2.7V-5.5V). Low-current design permits operation with typical standby and active currents of only 500 nA and 300  $\mu$ A, respectively.

## MCP607 CMOS Operational Amplifier

MCP607 operational amplifier is unity-gain stable with a low offset voltage (250  $\mu$ V, maximum). Performance characteristics include rail-to-rail output swing capability and low input bias current (80 pA at +85°C, maximum).

## Analog output

There is an Analog output for users who want to side step the onboard ADC and use an ADC from a microcontroller instead.

## One wire measurement

To measure current using this click it is necessary to put one wire through the sensor, not both.



## How it works

When current flows through the sensor there is the same voltage waveform at the output of the sensor (usually sinusoidal).

The first stage on the click board is the Low-Pass filter (whose role is the suppression of radio waves and other noise from large cable from sensor to the click board). The R1 from the Low-Pass filter and the R2 make the voltage divider. After the Low-Pass filter there is the operational amplifier, which is powered by single supply voltage. Because of the single supply this operational amplifier can amplify only the positive part of signal (rectifier). Gain is defined by the R4 and R3:

$$G = 1 + \frac{R_4}{R_3} = 1 + \frac{150k}{20k} = 8.5$$

The next stage is another Low-Pass filter which has to make continual DC voltage, which can be used to calculate the input current.

The 12bit ADC is used to convert voltage to digital data. Development board MCU communicates with the ADC using SPI and calculates RMS of input current.

### Key features

- 3.5mm jack
- Non-invasive measurement
- MCP3201 ADC converter
  - 12-bit resolution
  - 100 ksps Maximum Sampling Rate at VDD = 5V
  - 50 ksps Maximum Sampling Rate at VDD = 2.7V
  - 500 nA Typical Standby Current, 2  $\mu$ A Maximum
  - 400  $\mu$ A Maximum Active Current at 5V
- MCP607 Op Amp
  - Unity-Gain Stable
  - Low Input Offset Voltage: 250  $\mu$ V (maximum)
  - Low Input Bias Current: 80 pA (maximum at +85°C)
- Interface: SPI
- 3.3V or 5V power supply

### SPECIFICATION

Product Type	Measurements
Applications	One phase measuring from the power line (110/220V) or some other alternating voltage/current source, power consumption measurement, current monitoring (over the analog output).
On-board modules	MCP3201, MCP607
Key Features	Non-invasive measurement, 12-bit resolution MCP3201 ADC converter, the click measures alternating currents up to 30A , MCP607 CMOS Op Amp
Key Benefits	Non-invasive measurement
Interface	SPI
Power Supply	3.3V or 5V
Compatibility	mikroBUS
Click board size	M (42.9 x 25.4 mm)

## Pinout diagram

This table shows how the pinout on **AC Current click** corresponds to the pinout on the mikroBUS™ socket (the latter shown in the two middle columns).

Notes	Pin	mikroBUS™				Pin	Notes
		1	AN	PWM	16		
Analog	<b>AN</b>	<b>1</b>	AN	PWM	<b>16</b>	NC	Not connected
Not connected	NC	<b>2</b>	RST	INT	<b>15</b>	NC	Not connected
Chip select/Shutdown input	<b>CS</b>	<b>3</b>	CS	TX	<b>14</b>	NC	Not connected
SPI clock	<b>SCK</b>	<b>4</b>	SCK	RX	<b>13</b>	NC	Not connected
Serial data out	<b>MISO</b>	<b>5</b>	MISO	SCL	<b>12</b>	NC	Not connected
Not connected	NC	<b>6</b>	MOSI	SDA	<b>11</b>	NC	Not connected
Power supply	<b>+3.3V</b>	<b>7</b>	3.3V	5V	<b>10</b>	<b>+5V</b>	Power supply
Ground	<b>GND</b>	<b>8</b>	GND	GND	<b>9</b>	<b>GND</b>	Ground

## Onboard jumpers

The table below shows information about onboard jumpers:

Designator	Name	Default Position	Default Option	Description
JP1	PWR.SEL.	Left	3.3V	Power Supply Voltage Selection 3.3V/5V, left position 3.3V, right position 5V

## Programming

This code snippet initializes MCU, AC Current click board and measures and shows current value in mA.

```
01 void main()
02 {
03     system_init();
04     ac_current_init();
05
06     while ( true )
07     {
08         ac_current = 0;
09         ac_current = ac_current_get_mA();
10         usart_write();
11         Delay_ms( 1000 );
12     }
13 }
```