



Chipsmall Limited consists of a professional team with an average of over 10 year of expertise in the distribution of electronic components. Based in Hongkong, we have already established firm and mutual-benefit business relationships with customers from,Europe,America and south Asia,supplying obsolete and hard-to-find components to meet their specific needs.

With the principle of “Quality Parts,Customers Priority,Honest Operation,and Considerate Service”,our business mainly focus on the distribution of electronic components. Line cards we deal with include Microchip,ALPS,ROHM,Xilinx,Pulse,ON,Everlight and Freescale. Main products comprise IC,Modules,Potentiometer,IC Socket,Relay,Connector.Our parts cover such applications as commercial,industrial, and automotives areas.

We are looking forward to setting up business relationship with you and hope to provide you with the best service and solution. Let us make a better world for our industry!



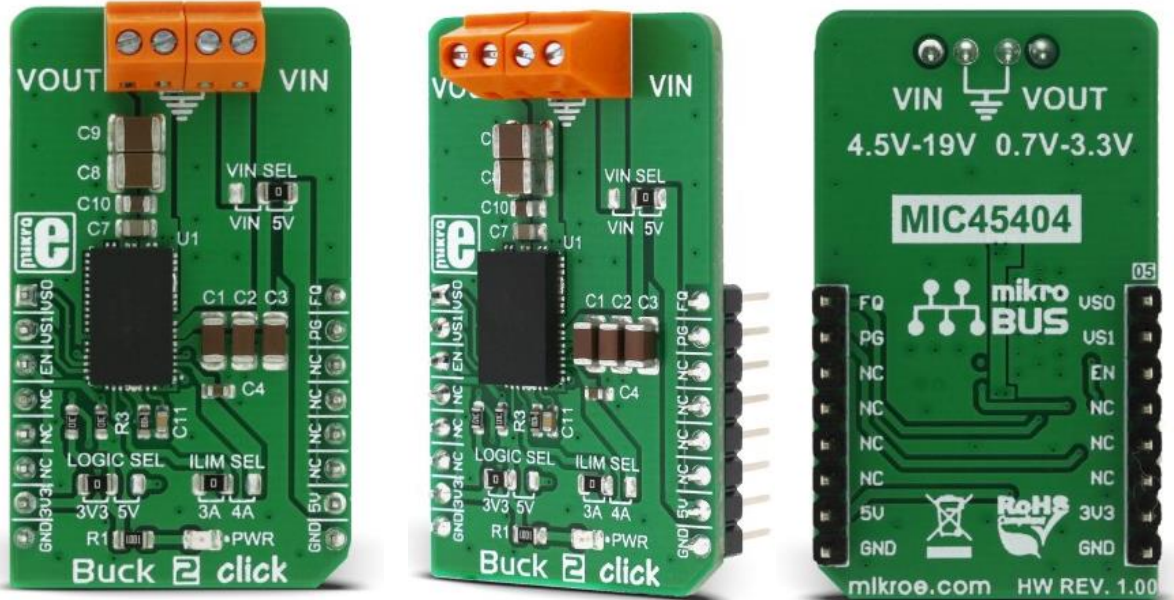
## Contact us

Tel: +86-755-8981 8866 Fax: +86-755-8427 6832

Email & Skype: info@chipsmall.com Web: www.chipsmall.com

Address: A1208, Overseas Decoration Building, #122 Zhenhua RD., Futian, Shenzhen, China





# Buck 2 click

PID: MIKROE-2911

Weight: 25 g

**Buck 2 click** is a powerful step down DC-DC switching regulator. It gives a high precision regulated voltage at its output and it can handle an ample amount of current. Buck 2 click is highly configurable - the output voltage, maximum current limiting, and the switching frequency parameters can be controlled via the IC pins routed to the mikroBUS™ socket, providing a simple and secure connection to the host MCU.

The input voltage can range from 4.5V to 19V and the output can be set to work in several discrete steps, ranging from 0.7V to 3.3V. Features, such as the wide range of input voltages, pin configurable working parameters, internal soft start, thermal shutdown, hiccup mode short-circuit protection and high switching efficiency, make this device a perfect choice for any step-down application which demands reasonably high current and accurate voltage regulation with clean and ripple-free low voltage power supply - such as the embedded electronic devices, servers, routers, data storage devices, low power ICs and similar.

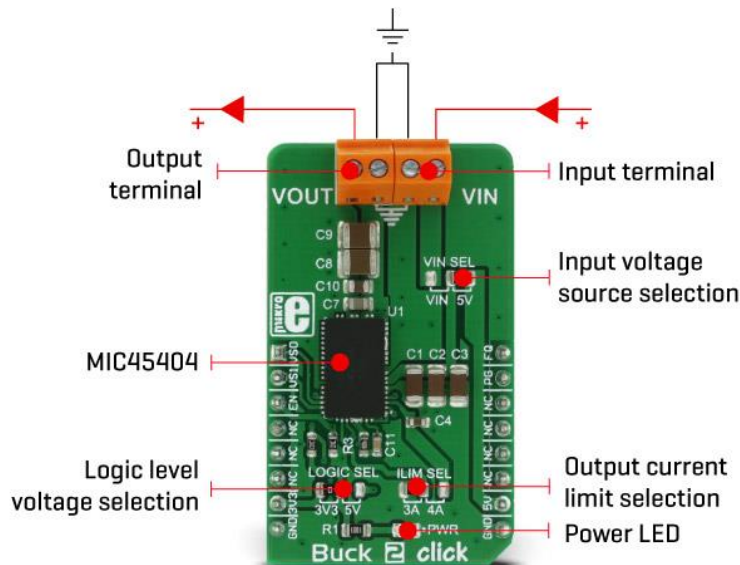


## How does it work?

The step down DC-DC regulator used on this click board™ is the MIC45404, a 19V 5A ultra-low profile DC-to-DC power module by Microchip. This IC is a valley current mode controlled power module, meaning that it has a faster response than the traditional peak current mode control, thus better response to transients. This IC requires a minimal number of external components, which makes the whole device pretty robust and easy to work with. Unlike other traditional switching regulators, this one does not require external feedback components - it is enough to directly connect the OUTSNS pin to the output voltage. This allows for more accurate control over the voltage regulation.

Buck 2 click offers a possibility to configure certain working parameters such as the output voltage, current limit threshold, and PWM switching frequency, by changing the states of the dedicated pins. Those pins are either routed to the mikroBUS™ socket or equipped with the SMD jumpers so that they could be set by the end user. These pins can be set to the GND level, VCC level or can be left afloat - high impedance mode (HIGH-Z). They are sampled as soon as the internal voltage is stabilized, and their state is latched - further changes will not affect the selected configuration. Tables for the configurable pins settings and their values can be found below.

Output voltage level is selected by the VOSET0 and VOSET1 pins of the MIC45404 IC, routed to the mikroBUS™ AN and RST pins, respectively. This gives a total of nine possible voltage level combinations.



PWM switching frequency can be changed by the FREQ pin, routed to the PWM pin of the mikroBUS™ socket. The switching frequency is related to the selected output voltage and for this reason, it is routed to the mikroBUS™ socket, so that the voltage output and the corresponding frequency for the selected voltage can be set. There are three possible frequency values: 400kHz, 565kHz, and 790kHz.

The current limiting is selected by the onboard SMD jumper, labeled as ILIM SEL. It is possible to limit the current to 3A, 4A, and 5A. The current limiting is instantaneous and the MIC45404 IC offers current limit and current sensing on both high-side and low-side internal MOSFET switches. It also features a special Hiccup mode, which reduces power dissipation in prolonged overload or short circuit situations. When a low-end MOSFET current limiting event occurs, the internal counter is incremented. A PWM cycle with no low-end MOSFET limiting events will decrease the internal counter. If the internal counter reaches 0Fh, both MOSFETs will be tri-stated and the power to the output will be cut off. After a predetermined wait time has expired, the MIC45404 IC will be restarted and will attempt a new soft-startup sequence. This mechanism ensures that no false overload events are generated.

The EN/DLY pin is used to enable the device. A HIGH logic level on this pin will start up the internal sections of the MIC45404 IC. This pin is routed to the mikroBUS™ CS pin, and since it is in an open drain configuration, it is pulled by the resistor to the GND.

The PG pin is used to indicate the power good condition of the output. When the voltage on the output (OUTSNS) drops under 90% of the regulated voltage, this pin is set to a LOW logic level, indicating irregular output voltage. This pin is pulled to a HIGH logic level by an on-board pull-up resistor since it is configured as the open drain output. It is routed to the mikroBUS™ INT pin.

Buck 2 click is equipped with two screw terminals, used to connect the input voltage source as well as the output load. The input voltage source is selectable between the +5V rail from the mikroBUS™ and the voltage at the input terminal. It also has an onboard LOGIC SEL SMD jumper, used to set up the logic voltage level, so that both 3.3V and 5V capable MCUs can be used.

## Output voltage selection

VOSET1	VOSET0	Output Voltage [V]	Required Sw. Freq. [kHz]
0	0	3.3	790
0	1	2.5	
1	0	1.8	565
1	1	1.5	

0	High-Z	1.2	400
High-Z	0	1.0	
1	High-Z	0.9	
High-Z	1	0.8	
High-Z	High-Z	0.7	

## Switching frequency

FQ pin	Frequency [KHz]
High-Z (open)	400
0 (GND)	565
1 (VDDA)	790


## Specifications

<b>Type</b>	Buck
<b>Applications</b>	A perfect choice for step-down applications for embedded electronic devices, servers, routers, data storage devices, low power ICs, etc
<b>On-board modules</b>	MIC45404, a 19V 5A ultra-low profile DC-to-DC power module by Microchip

<b>Key Features</b>	Buck 2 click features a wide range of input voltages, pin configurable working parameters, internal soft start, thermal shutdown, hiccup mode short-circuit protection and high switching efficiency
<b>Interface</b>	GPIO
<b>Input Voltage</b>	3.3V or 5V
<b>Click board size</b>	M (42.9 x 25.4 mm)

## Pinout diagram

This table shows how the pinout on **Buck 2 click** corresponds to the pinout on the mikroBUS™ socket (the latter shown in the two middle columns).

Notes	Pin					Pin	Notes
VOSET0 input	<b>VS0</b>	1	AN	PWM	16	<b>FQ</b>	FREQ input
VOSET1 input	<b>VS1</b>	2	RST	INT	15	<b>PG</b>	Power good output
Enable	<b>EN</b>	3	CS	RX	14	NC	
	NC	4	SCK	TX	13	NC	
	NC	5	MISO	SCL	12	NC	
	NC	6	MOSI	SDA	11	NC	
Power supply	<b>+3.3V</b>	7	3.3V	5V	10	<b>+5V</b>	Power supply

Ground	<b>GND</b>	8	<b>GND</b>	<b>GND</b>	9	<b>GND</b>	Ground
--------	------------	---	------------	------------	---	------------	--------

## Buck 2 click electrical specifications

Description	Min	Typ	Max	Unit
Input voltage range	4.5	5	19	V
Output voltage range	0.7		3.3	V
Output current	0		5	A

## Onboard settings and indicators

Label	Name	Default	Description
LD1	PWR	-	Power LED indicator
JP1	VIN SEL	Right	Input voltage source selection: Left position – external VIN, Right position – 5V from mikroBUS™
JP2	ILIM SEL	Left	Output current limit selection: Left position – 3A, right position – 4A, unconnected – 5A
JP3	LOGIC SEL	Left	Logic level selection: Left position – 3V3, right position – 5V
TB1	VIN-EXT	-	Screw terminal for connecting an external voltage source

TB2	VOUT	-	Screw terminal for connecting the load
-----	------	---	--

## Software support

We provide a library for Buck 2 click on our LibStock page, as well as a demo application (example), developed using MikroElektronika compilers and mikroSDK. The provided click library is mikroSDK standard compliant. The demo application can run on all the main MikroElektronika development boards.

### Library Description

This library carries all necessary functions for controlling Buck 2 click.

### Key functions

`void buck2_setMode(uint8_t mode)`- Sets up working mode  
`void buck2_setVOUT_3300mV()`- Sets up output voltage to 3.3 V  
`void buck2_setVOUT_2500mV()`- Sets up output voltage to 2.5 V  
`void buck2_setVOUT_1800mV()`- Sets up output voltage to 1.8 V  
`void buck2_setVOUT_1500mV()`- Sets up output voltage to 1.5 V

### Examples Description

The demo application is composed of three sections:

- System Initialization - Initializes CS pin, RST pin, PWM pin, AN pin as OUTPUT and INT pin as INPUT.
- Application Initialization - Initializes Driver init and settings chip mode as ACTIVE.
- Application Task - (code snippet) - Sets a different range of input voltages every 3 seconds and checks if it has reached the set output voltage.

```
void applicationTask()
{
    PG_State = buck2_getPowerGood();
    if ( PG_State != 0 )
    {
        mikrobus_logWrite("Power good output voltage", _LOG_LINE);
    }
    buck2_setVOUT_3300mV();
    Delay_ms( 3000 );
    buck2_setVOUT_2500mV();
    Delay_ms( 3000 );
    buck2_setVOUT_1800mV();
    Delay_ms( 3000 );
    buck2_setVOUT_1500mV();
    Delay_ms( 3000 );
}
```



The full application code, and ready to use projects can be found on our LibStock page. Other MikroElektronika libraries used in the example:

- UART

### **Additional notes and information**

Depending on the development board you are using, you may need USB UART click, USB UART 2 click or RS232 click to connect to your PC, for development systems with no UART to USB interface available on the board. The terminal available in all MikroElektronika compilers, or any other terminal application of your choice, can be used to read the message.

## **mikroSDK**

---

This click board is supported with mikroSDK - MikroElektronika Software Development Kit. To ensure proper operation of mikroSDK compliant click board demo applications, mikroSDK should be downloaded from the LibStock and installed for the compiler you are using.

For more information about mikroSDK, visit the official page.

## **Downloads**

---

mikroBUS™ standard specifications

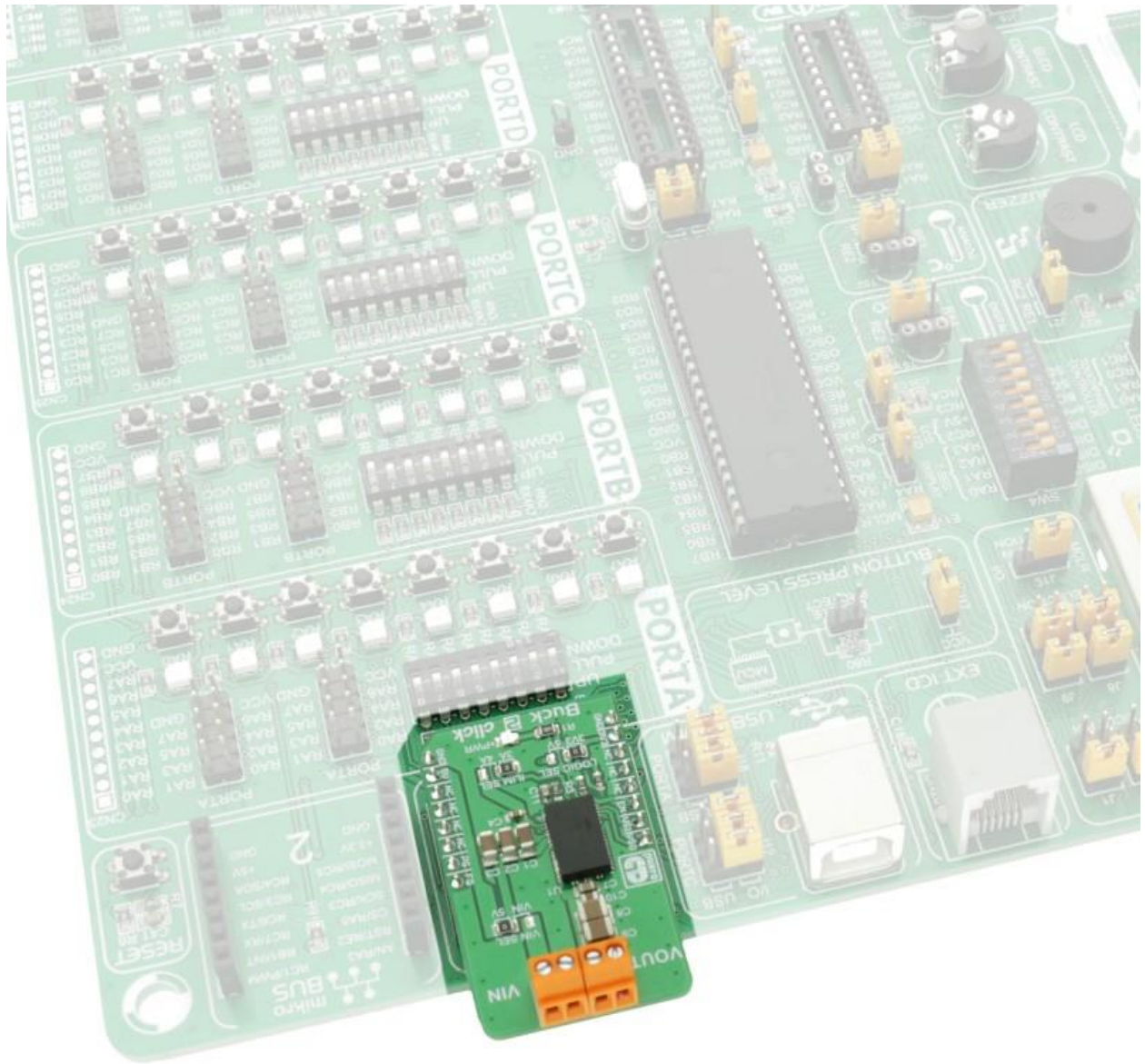
LibStock: mikroSDK

Buck 2 click schematic

Buck 2 click - 2D and 3D files

MIC45404 datasheet

LibStock: Buck 2 click library



<https://www.mikroe.com/buck-2-click-13-18>