



Chipsmall Limited consists of a professional team with an average of over 10 year of expertise in the distribution of electronic components. Based in Hongkong, we have already established firm and mutual-benefit business relationships with customers from,Europe,America and south Asia,supplying obsolete and hard-to-find components to meet their specific needs.

With the principle of "Quality Parts,Customers Priority,Honest Operation,and Considerate Service",our business mainly focus on the distribution of electronic components. Line cards we deal with include Microchip,ALPS,ROHM,Xilinx,Pulse,ON,Everlight and Freescale. Main products comprise IC,Modules,Potentiometer,IC Socket,Relay,Connector.Our parts cover such applications as commercial,industrial, and automotives areas.

We are looking forward to setting up business relationship with you and hope to provide you with the best service and solution. Let us make a better world for our industry!



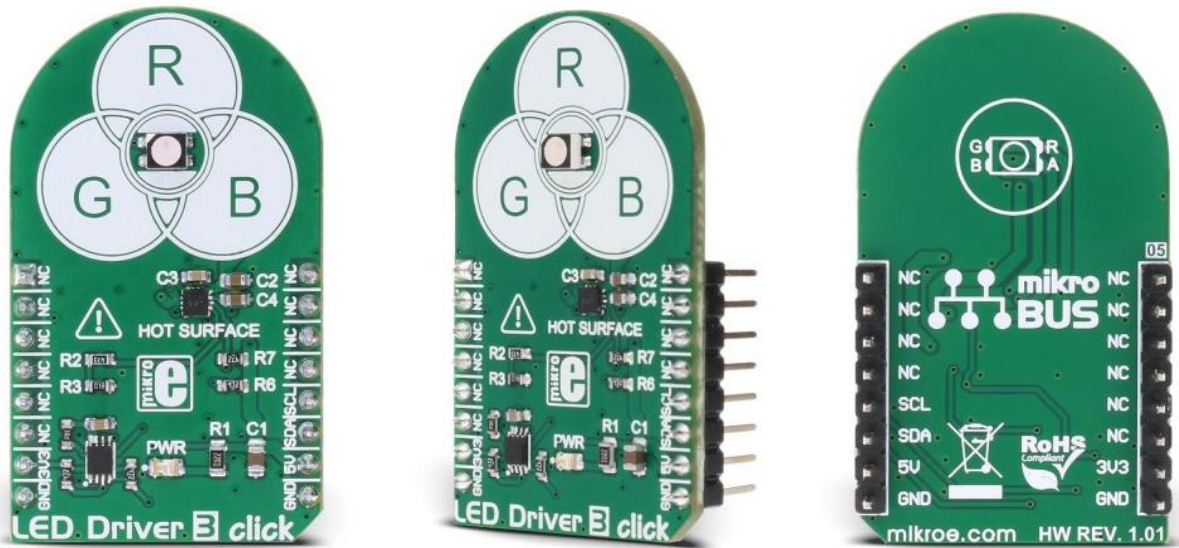
## Contact us

Tel: +86-755-8981 8866 Fax: +86-755-8427 6832

Email & Skype: info@chipsmall.com Web: www.chipsmall.com

Address: A1208, Overseas Decoration Building, #122 Zhenhua RD., Futian, Shenzhen, China





## LED Driver 3 click

PID: MIKROE-2950

Weight: 30 g

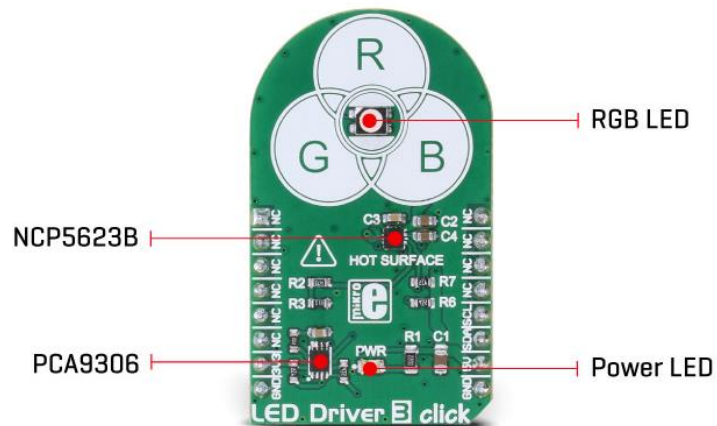
### Perfect control over RBG LEDs

**LED Driver 3 click** is an RGB LED driver, capable of driving RGB LEDs with up to 30mA per segment, via the digital I2C interface. It comes with an RGB LED onboard, and is capable of displaying a palette of 32768 colors. It features an integrated circuit with three independent LED driver sections and a programmable gradual dimming control, which gives a smooth dimming effect. Heat dissipation is taken to the minimum, due to a fact that the used driver IC works with up to 94% efficiency.

LED Driver 3 click can be used in a range of different applications: color backlight displays, backlit computer keyboards and mice, color-coded signalization, and in many decorative colored lighting applications, which can be controlled by an MCU.

## How does it work?

The main component of LED Driver 3 click is the NCP5623B, a triple output RGB LED driver, controlled through the I2C protocol, from ON Semiconductors. This IC is equipped with an internal DC/DC converter, that works as a high-efficiency charge pump, providing the required DC voltage for all three LED segments. The current flow through each LED segment is regulated by an internal current mirror, associated with each of the channels.



The gradual dimming function allows an easy way of dimming RGB LED intensity. With a simple I2C command, it is possible to trigger either upward or downward dimming. Dimming will affect the current through the LED segments, but the internal current limiter takes care not to exceed the maximum allowed current, set by the onboard resistor.

The integrated PWM operates with five bits, having 32 steps to cover the full modulation (0 to 100%) of the associated LED channel. Having a value of 0x00h will turn the associated LED completely OFF, while 0x1Fh will set the LED to a programmed LED current value. The last three bits (MSB) are used to set the desired command register: PWM1, PWM2, PWM3, dimming direction, gradual dimming, LED current, etc. It should be noted that the gradual dimming function affects the illumination by changing the LED current intensity, while PWM affects the associated LED illumination by changing the pulse width - e.g. it is possible to set the desired color by setting the PWM modulation of each color component, and then gradually dim the brightness of the final color mix up or down by the gradual dimming option - affecting the current through all the LED segments simultaneously. It is also possible to set the fixed value for the current through the LED segments via the I2C interface, when gradual dimming is not needed.

More information about the registers and their usage can be found in the NCP5623B datasheet. However, the provided click library offers easy to use functions for setting up the RGB color of the LED and utilizing the smooth gradient functions. The included example application demonstrates the functionality and usage of these libraries. The example can be used as a reference for custom projects.

To allow operation on both 3.3V and 5V MCUs, LED Driver 3 click employs PCA9306, a dual bidirectional I2C/SMBUS voltage level translator from Texas Instruments. This IC allows the click board to be interfaced with both 3.3V and 5V MCUs. The logic voltage level shifting is done automatically, so no SMD jumpers are needed in this case. Both 3.3V and 5V rails are needed for this circuit to be operational.

The click board is also equipped with an RGB LED. This is a high brightness RGB LED with a wide viewing angle, that can get very hot and bright while operated with maximum current. For this reason, a care must be taken not to touch it or watch directly at the LED. SCL1 and SDA1 lines from the I2C level shifter are routed to the standard mikroBUS™ I2C pins, labeled as SCL and SDA. The click board™ already contains pull-up resistors, so no additional parts are needed to work with the click board.


## Specifications

<b>Type</b>	Boost
<b>Applications</b>	LED Driver 3 click can be used for color backlight displays, backlit computer keyboards and mice, color-coded signalization, and in many decorative colored lighting applications, which can be controlled by the MCU.
<b>On-board modules</b>	NCP5623B, a triple output RGB LED driver, controlled through the I2C protocol, from ON Semiconductors.
<b>Key Features</b>	Led Driver 3 features an integrated circuit with three independent LED driver sections and a programmable gradual dimming control, which gives a smooth dimming effect. It can display 32768 different colors.
<b>Interface</b>	I2C
<b>Input Voltage</b>	3.3V,5V
<b>Click board size</b>	M (42.9 x 25.4 mm)

## Pinout diagram

---

This table shows how the pinout on **LED Driver 3 click** corresponds to the pinout on the mikroBUS™ socket (the latter shown in the two middle columns).

Notes	Pin					Pin	Notes
	NC	1	AN	PWM	16	NC	
	NC	2	RST	INT	15	NC	
	NC	3	CS	RX	14	NC	
	NC	4	SCK	TX	13	NC	
	NC	5	MISO	SCL	12	SCL	I2C Clock
	NC	6	MOSI	SDA	11	SDA	I2C Data
Power Supply	+3V3	7	3.3V	5V	10	+5V	Power Supply
Ground	GND	8	GND	GND	9	GND	Ground

## Onboard settings and indicators

---

Label	Name	Default	Description
LD1	PWR	-	Power indication LED

## Software support

---

We provide a library for LED Driver 3 click on our Libstock page, as well as a demo application (example), developed using MikroElektronika compilers and mikroSDK. The

provided click library is mikroSDK standard compliant. The demo application can run on all the main MikroElektronika development boards.

## Library Description

The library carries functions necessary to have complete control over all functionalities of the Click board™.

Key functions:

- `void leddriver3_setIntensity(uint8_t intensity)` - Set intensity of LED light.
- `void leddriver3_setRGB_Color(uint8_t red, uint8_t green, uint8_t blue)` - Set color in RGB format.
- `void leddriver3_setColor(uint32_t color)` - Set color using one of the predefined values.

## Examples Description

The demo application is composed of three sections:

- System Initialization - Initializes I2C module used for LED Driver 3 click.
- Application Initialization - Driver initialization.
- Application Task - (code snippet) - Sequentially changes intensity and color of the LED light with delays of one second between each operation.

```
void applicationTask()
{
    leddriver3_setIntensity(_LEDDRIVER3_INCREMENT | _LEDDRIVER3_INTENSITY_8);
    leddriver3_setTimer(_LEDDRIVER3_TIMER_8ms | _LEDDRIVER3_TIMER_16ms); // 24 ms
    leddriver3_setColor(_LEDDRIVER3_COLOR_RED);
    Delay_1sec();

    leddriver3_setIntensity(_LEDDRIVER3_CONSTANT | _LEDDRIVER3_INTENSITY_16);
    leddriver3_setColor(_LEDDRIVER3_COLOR_YELLOW);
    Delay_1sec();
    leddriver3_setColor(_LEDDRIVER3_COLOR_BLUE);
    Delay_1sec();
    leddriver3_setRGB_Color(0x40, 0x7F, 0x80);
    Delay_1sec();
}
```

The full application code, and ready to use projects can be found on our Libstock page. Other mikroE Libraries used in the example:

- I2C

## Additional notes and information

Depending on the development board you are using, you may need USB UART click, USB UART 2 click or RS232 click to connect to your PC, for development systems with no UART to USB interface available on the board. The terminal available in all MikroElektronika compilers, or any other terminal application of your choice, can be used to read the message.

# mikroSDK

---

This click board is supported with mikroSDK - MikroElektronika Software Development Kit. To ensure proper operation of mikroSDK compliant click board demo applications, mikroSDK should be downloaded from the LibStock and installed for the compiler you are using.

For more information about mikroSDK, visit the official page.

## Downloads

---

mikroBUS™ Standard specification

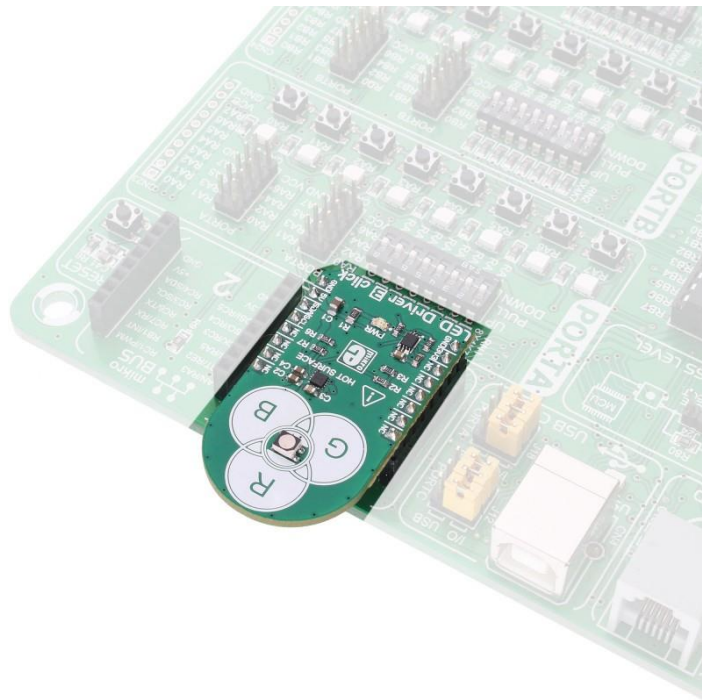
LibStock: mikroSDK

Libstock: LED Driver 3 click

NCP5623B datasheet

LED Driver 3 click schematic

LED Driver 3 click: 2D and 3D files



<https://www.mikroe.com/led-driver-3-click> 3-27-18