



Chipsmall Limited consists of a professional team with an average of over 10 year of expertise in the distribution of electronic components. Based in Hongkong, we have already established firm and mutual-benefit business relationships with customers from,Europe,America and south Asia,supplying obsolete and hard-to-find components to meet their specific needs.

With the principle of “Quality Parts,Customers Priority,Honest Operation,and Considerate Service”,our business mainly focus on the distribution of electronic components. Line cards we deal with include Microchip,ALPS,ROHM,Xilinx,Pulse,ON,Everlight and Freescale. Main products comprise IC,Modules,Potentiometer,IC Socket,Relay,Connector.Our parts cover such applications as commercial,industrial, and automotives areas.

We are looking forward to setting up business relationship with you and hope to provide you with the best service and solution. Let us make a better world for our industry!



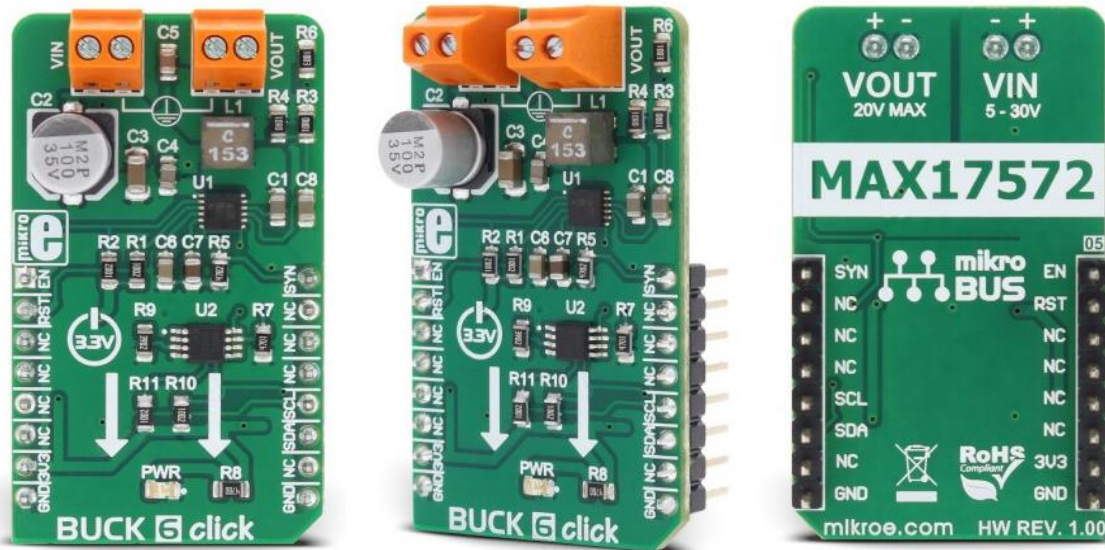
## Contact us

Tel: +86-755-8981 8866 Fax: +86-755-8427 6832

Email & Skype: info@chipsmall.com Web: www.chipsmall.com

Address: A1208, Overseas Decoration Building, #122 Zhenhua RD., Futian, Shenzhen, China





## BUCK 6 click

PID: MIKROE-2957

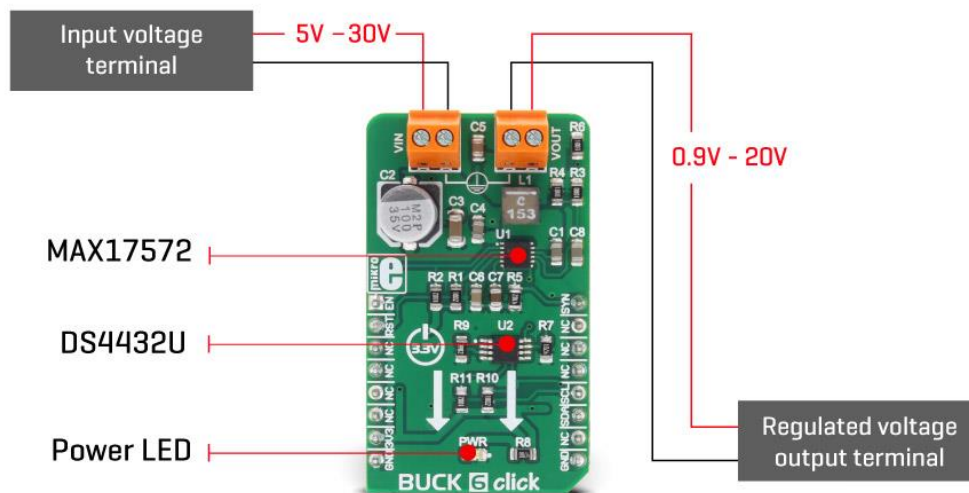
Weight: 30 g

BUCK 6 click is an advanced synchronous DC-DC step down (buck) converter, with a very wide input voltage range and reasonably high output current. The digitally adjustable output voltage, overcurrent protection, overtemperature protection, soft start, adjustable PWM switching frequency, and very high efficiency, are just some of its many features that make this click an ideal solution whenever there is a requirement to step down the voltage. Also, an additional SYNC input allows tweaking of the internal clock signal, so it can be synchronized with the external clock signal when more than one device is used.

The voltage output can be set via the I2C interface pins on the mikroBUS™. This allows digital interfacing of the BUCK 6 and controlling the output voltage by a custom software. Equipped with these features, BUCK 6 click can be used for many power supply applications, such as wall transformer voltage regulators, general purpose power supplies, distributed supply regulators, single board systems which are powered with high voltages, and similar applications where a high current buck converter with a wide input voltage range, is required.

## How does it work?

BUCK 6 click consists of two integrated circuits. The first one is the MAX17572, a step down (buck) DC-DC converter from Maxim Integrated. This is the main voltage regulation component, which is used in conjunction with the DS4432U, a dual channel, 7-Bit digital to analog converter (DAC) with the I2C interface, also from Maxim Integrated. The DAC is connected to the FB pin of the MAX17572, affecting its internal PWM duty cycle and changing the output voltage that way. The MAX17572 requires very few components allowing the clean and simple design of the final application, considering all the features it has.



The MAX17572 features a robust overload and short circuit protection. When the internally set current limit of 1.7A is exceeded, the high side MOSFET is turned off and the hiccup mode is triggered. This mode suspends the operation for 32,768 duty cycles after which the soft start sequence is reattempted. If the faulty condition is still present and the feedback voltage remains under 0.58V, the switching frequency will be halved to avoid overheating during the restart sequence.

The output voltage regulation ranges from 0.9V up to 20V, with the input voltage up to 30V and greater than 5V. It should be noted that the input voltage must always be greater than the desired output voltage. The voltage can be set via the I2C interface of the DS4432U DAC. The DAC is powered by the 3.3V rail of the mikroBUS™. This DAC requires very few components, such as the full-scale selection resistor. Since only one channel of the DAC is used, even fewer components are required for the DAC itself. The DAC can both source and sink the current, so it must be properly set to get the desired effect on the output voltage. Included click board™ library contains a function which sets all the required initialization parameters, as well as functions used to set up the output voltage.

The soft start feature prevents the inrush current. This feature is determined by the soft start capacitor. The soft start is set to about 10ms on the BUCK 6 click.

The EN pin of the MAX17572 is routed to the AN pin of the mikroBUS™. This pin is used to enable the buck converter, but it can also be used to set the undervoltage lockout threshold. If the input voltage falls under this threshold, the internal low drop output regulators (LDOs) will not power on the internal logic and the buck converter will stay disabled. The EN pin is pulled up to the 3.3V mikroBUS™ power rail, by the onboard resistor.

The #RESET pin of the MAX17572 is an open drain output and it is pulled to a HIGH logic level by the onboard resistor. This pin is routed to the RST pin of the mikroBUS™ and can be used as the power good indication. When the output voltage drops below 92% of the nominal regulated output voltage, this pin is asserted, and it is driven to a LOW logic level.

One of the distinctive features of this buck converter is the ability to synchronize the switching clock frequency with an external clock signal. It is possible to synchronize the switching frequency within a range of about 0% to 10% lower than the value set by the onboard resistor, which is about 1.8MHz. For the synchronizing purposes, the SYNC pin is routed to the PWM pin of the mikroBUS™. This feature is primarily used to synchronize switching frequencies when more than a single buck converter is used.

The Click board™ is equipped with the two screw terminals for an easy and secure connection. The input terminal is used to connect the input power source, while the output terminal is used to connect the load, up to 1A. The click board is supplied with the auxiliary power for the DAC and other logic sections of the click board, from the mikroBUS™ 3.3V power rail.


## Specifications

<b>Type</b>	Buck
<b>Applications</b>	Wall transformer voltage regulators, general purpose power supplies, distributed supply regulators, and similar applications where a high current buck converter with a wide input voltage range, is required.
<b>On-board modules</b>	MAX17572, a step down (buck) DC-DC converter from Maxim Integrated, DS4432U, a dual channel, 7-Bit DAC with the I2C interface from Maxim Integrated

<b>Key Features</b>	Wide input voltage range, digitally adjustable output voltage, overcurrent protection, overtemperature protection, soft start, adjustable PWM switching frequency, very high efficiency, low external components count...
<b>Interface</b>	I2C
<b>Input Voltage</b>	3.3V
<b>Click board size</b>	M (42.9 x 25.4 mm)

## Pinout diagram

This table shows how the pinout on **BUCK 6 click** corresponds to the pinout on the mikroBUS™ socket (the latter shown in the two middle columns).

Notes	Pin					Pin	Notes
Enable	EN	1	AN	PWM	16	SYN	Sync to ext. clk.
Reset	RST	2	RST	INT	15	NC	
	NC	3	CS	RX	14	NC	
	NC	4	SCK	TX	13	NC	
	NC	5	MISO	SCL	12	SCL	I2C clock
	NC	6	MOSI	SDA	11	SDA	I2C data
Power supply	+3.3V	7	3.3V	5V	10	NC	

Ground	<b>GND</b>	8	<b>GND</b>	<b>GND</b>	9	<b>GND</b>	Ground
--------	------------	---	------------	------------	---	------------	--------

## BUCK 6 click electrical specifications

---

Description	Min	Typ	Max	Unit
Input Voltage	5	-	30	V
Regulated output voltage	0.9	-	20	V
Current output	-	-	1	A

## Onboard settings and indicators

---

Label	Name	Default	Description
LD1	PWR	-	Power LED indicator

## Software support

---

We provide the library for BUCK 6 click on our LibStock page, as well as the demo application (example), developed using MikroElektronika compilers and mikroSDK. The provided click library is mikroSDK standard compliant. The demo application can run on all the main MikroElektronika development boards.

### Library Description

The library contains all the necessary functions to have complete control over BUCK 6 click board.

Control over PWM is not included in the library.

Key functions:

- `void buck6_setMode(uint8_t mode)` - Sets up working mode
- `void buck6_setMaxVoltage(uint8_t voltage)` - Sets maximum voltage on outputs

## Examples Description

The demo application is composed of three sections:

- System Initialization - Initializes CS pin, RST pin, PWM pin, AN pin as OUTPUT and INT pin as INPUT.
- Application Initialization - The driver initialization and chip settings for the ACTIVE mode. Sets the maximum range to 5V.
- Application Task - (code snippet) - Sets the different maximum voltages.

```
void applicationTask()
{
    buck6_setMaxVoltage(_BUCK6_MAX_RANGE_2500mV);
    Delay_ms( 3000 );
    buck6_setMaxVoltage(_BUCK6_MAX_RANGE_5000mV);
    Delay_ms( 3000 );
    buck6_setMaxVoltage(_BUCK6_MAX_RANGE_7500mV);
    Delay_ms( 3000 );
    buck6_setMaxVoltage(_BUCK6_MAX_RANGE_10000mV);
    Delay_ms( 3000 );
    buck6_setMaxVoltage(_BUCK6_MAX_RANGE_7500mV);
    Delay_ms( 3000 );
    buck6_setMaxVoltage(_BUCK6_MAX_RANGE_5000mV);
    Delay_ms( 3000 );
}
```

The full application code and ready-to-use projects can be found on our LibStock page.

Other MikroElektronika libraries used in the example:

- I2C

## Additional notes and information

Depending on the development board you are using, you may need USB UART click, USB UART 2 click or RS232 click to connect to your PC, for development systems with no UART to USB interface available on the board. The terminal available in all MikroElektronika compilers, or any other terminal application of your choice, can be used to read the message.

# mikroSDK

---

This click board is supported by the mikroSDK - MikroElektronika Software Development Kit. To ensure proper operation of mikroSDK compliant click board demo applications, the mikroSDK should be downloaded from the LibStock and installed for the compiler you are using.

For more information about mikroSDK, visit the official page.

## Downloads

---

mikroBUS™ Standard specification

LibStock: mikroSDK

Libstock: BUCK 6 click library

BUCK 6 click schematic

MAX17572 datasheet

BUCK 6 click: 2D and 3D files

DS4432U datasheet