



Chipsmall Limited consists of a professional team with an average of over 10 year of expertise in the distribution of electronic components. Based in Hongkong, we have already established firm and mutual-benefit business relationships with customers from,Europe,America and south Asia,supplying obsolete and hard-to-find components to meet their specific needs.

With the principle of “Quality Parts,Customers Priority,Honest Operation,and Considerate Service”,our business mainly focus on the distribution of electronic components. Line cards we deal with include Microchip,ALPS,ROHM,Xilinx,Pulse,ON,Everlight and Freescale. Main products comprise IC,Modules,Potentiometer,IC Socket,Relay,Connector.Our parts cover such applications as commercial,industrial, and automotives areas.

We are looking forward to setting up business relationship with you and hope to provide you with the best service and solution. Let us make a better world for our industry!



Contact us

Tel: +86-755-8981 8866 Fax: +86-755-8427 6832

Email & Skype: info@chipsmall.com Web: www.chipsmall.com

Address: A1208, Overseas Decoration Building, #122 Zhenhua RD., Futian, Shenzhen, China





Buck 3 click

PID: MIKROE-2971

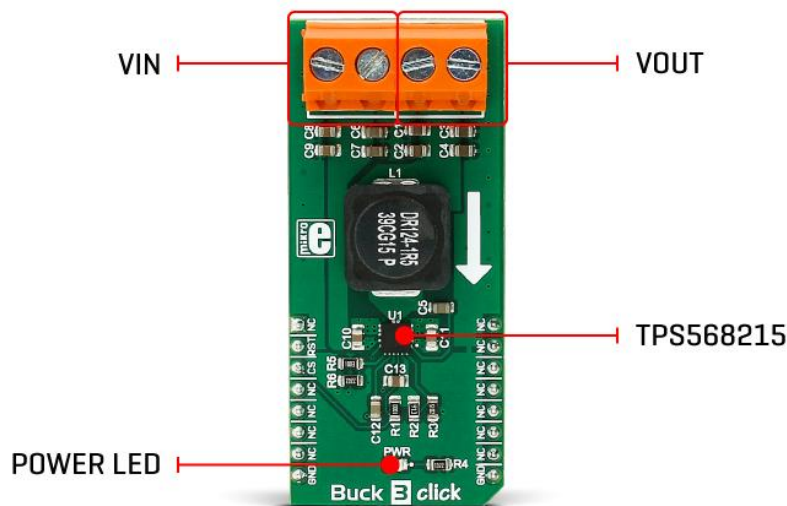
Weight: 30 g

Buck 3 click is a very advanced synchronous step-down (buck) converter, which is designed to deliver noise and ripple-free voltage to highly sensitive applications, such as FPGA and high-performance DSP platforms. The onboard step-down converter IC integrates low $R_{DS(on)}$ MOSFETs, that allow high efficiency, and thus high current on the output - up to 8A. Buck 3 operates at 800kHz, allowing an optimal balance between the efficiency and the size of the used components. DCM mode ensures that the efficiency is maintained even while working with light loads.

Besides clean, noiseless and ripple-free 3.3V output provided by the proprietary D-CAP3™ PWM control mode for a fast transient response, this device also features overvoltage and undervoltage protection, thermal protection, current limiting, soft start function, and more. These features allow Buck 3 click to be used in a range of different applications, such as servers and storage devices, set-top boxes, telecom and networking, sensitive DSP and FPGA embedded applications, and similar applications that require a clean and regulated power supply.

How does it work?

Buck 3 click uses the TPS568215, a 4.5V to 17V Input, 8A synchronous step-down SWIFT™ converter from Texas Instruments. Its main features are the unparalleled ripple and noise-free operation, as well as the high efficiency throughout the whole load range, up to 8A. As such, it is suitable for powering up power demanding applications. Driven by the D-CAP3™ technology, the TPS568215 allows for a very low number of external components, maintaining an accurate voltage at the output. To further minimize the noise, the TPS568215 has separate grounds for the logic signal and the analog signal. The design of the Click board™ PCB ensures that the low noise operation is maintained within the specifications.



The onboard voltage divider connected to the MODE pin of the IC is used to set the device to work with the fixed PWM frequency of 800kHz, DCM/Eco-mode™ for light loads, and to set the limiting current to about 7A.

When the connected load is light enough, the ripple current valleys on the inductor coils will cross zero. Since the TPS568215 is set to operate in DCM/Eco-mode™, the device will start skipping PWM pulses, maintaining the efficiency that way. For regular loads, the device will be operated with the fixed frequency PWM signal, set by the MODE pin - 800kHz, providing low ripple and low noise output voltage.

The PGD (power good) pin is used to signalize the undervoltage or overvoltage status of the device. When the voltage on the feedback pin is between 97% and 107% of the nominal output voltage, this pin is de-asserted and pulled to a HIGH logic level by the onboard pull-up resistor. When a faulty condition occurs, this pin is driven to a LOW logic state. PGD pin is routed to the CS pin of the mikroBUS™

The EN pin is used to enable the device. Setting this pin to HIGH logic level (above 1.2V) will activate the internal switching circuitry. When the pin is set to a LOW logic level, the device is in STANDBY mode, and the power consumption is minimal. The EN pin is routed to the mikroBUS™ AN pin.


This Click board™ is not powered up by the mikroBUS™ power rails. The power for the logic sections of the IC is supplied by the internal LDO output from the TPS568215 (VREG). This internal LDO is supplied by the input voltage, so the Buck 3 click will appear unpowered unless the external power supply is connected to the input terminal. Buck 3 click has two 2-pole terminals, used to connect the external power supply and the load. These robust input and output screw terminals have cross-section dimensions which allow high currents to be connected, with no heating or damage.

Specifications

Type	Buck
Applications	A perfect choice for step-down applications for embedded electronic devices, servers, routers, data storage devices, low power ICs, etc
On-board modules	TPS568215 4.5V to 17V input, 8A synchronous step-down SWIFT™ converter from Texas Instruments
Key Features	Eco-mode™ for the improved efficiency for light loads, D-CAP3™ technology for the low external components count, low noise and low output voltage ripple, very high efficiency allows current up to 8A
Interface	GPIO
Click board size	M (42.9 x 25.4 mm)

Pinout diagram

This table shows how the pinout on **Buck 3 click** corresponds to the pinout on the mikroBUS™ socket (the latter shown in the two middle columns).

Notes	Pin	 mikro™ BUS				Pin	Notes
	NC	1	AN	PWM	16	NC	
Enable	EN	2	RST	INT	15	NC	
Power ground terminal	PGD	3	CS	RX	14	NC	
	NC	4	SCK	TX	13	NC	
	NC	5	MISO	SCL	12	NC	
	NC	6	MOSI	SDA	11	NC	
	NC	7	3.3V	5V	10	NC	
Ground	GND	8	GND	GND	9	GND	Ground

Buck 3 click electrical specifications

Description	Min	Typ	Max	Unit
Input Voltage	-0.3	-	10	V
Regulated output voltage	-	3.3	-	V
Current output	-	8	-	A

Onboard settings and indicators

Label	Name	Default	Description
LD1	PWR	-	Power LED indicator

Software support

We provide the library for Buck 3 click on our LibStock page, as well as the demo application (example), developed using MikroElektronika compilers and mikroSDK. The provided click library is mikroSDK standard compliant. The demo application can run on all the main MikroElektronika development boards.

Library Description

The library carries only two functions needed to control Buck 3 click.

Key functions:

- `uint8_t buck3_getState()` - Checks the Power Good Indicator.
- `void buck3_enable(uint8_t state)` - Puts the device in working mode (enable).

Examples Description

The demo application is composed of three sections:

- System Initialization - Initializes the CS pin as INPUT and RST pin as OUTPUT.
- Application Initialization - Initializes the Driver init and puts the device in ACTIVE mode.
- Application Task - (code snippet) - Sequentially, each second, checks the status of the Buck 3 Click and if the overvoltage detected or device is under thermal shutdown it logs a message on the USBUART.

Note: Open Drain Power Good Indicator, it is asserted low if the output voltage is out of PGOOD threshold, Overvoltage or if the device is under thermal shutdown, EN shutdown or during soft start. Once the FB pin voltage is between 93% and 107% of the internal reference voltage (VREF) the PGOOD is pulled high.

```
void applicationTask()
{
    statePG = buck3_getState();

    if (statePG == 0)
    {
```

```
mikrobus_logWrite( "Overvoltage or thermal shutdown detected", _LOG_LINE );  
Delay_1sec();  
}  
}
```

The full application code and ready-to-use projects can be found on our LibStock page. Other MikroElektronika libraries used in the example:

- UART

Additional notes and information

Depending on the development board you are using, you may need USB UART click, USB UART 2 click or RS232 click to connect to your PC, for development systems with no UART to USB interface available on the board. The terminal available in all MikroElektronika compilers, or any other terminal application of your choice, can be used to read the message.

mikroSDK

This click board is supported by the mikroSDK - MikroElektronika Software Development Kit. To ensure proper operation of mikroSDK compliant click board demo applications, the mikroSDK should be downloaded from the LibStock and installed for the compiler you are using.

For more information about mikroSDK, visit the official page.

Downloads

mikroBUS™ Standard specification

LibStock: mikroSDK

Libstock: Buck 3 click library

TSP568215 datasheet

Buck 3 click schematic

Buck 3 click: 2D and 3D files

<https://www.mikroe.com/buck-3-click> 4-17-18