



Chipsmall Limited consists of a professional team with an average of over 10 year of expertise in the distribution of electronic components. Based in Hongkong, we have already established firm and mutual-benefit business relationships with customers from,Europe,America and south Asia,supplying obsolete and hard-to-find components to meet their specific needs.

With the principle of "Quality Parts,Customers Priority,Honest Operation,and Considerate Service",our business mainly focus on the distribution of electronic components. Line cards we deal with include Microchip,ALPS,ROHM,Xilinx,Pulse,ON,Everlight and Freescale. Main products comprise IC,Modules,Potentiometer,IC Socket,Relay,Connector.Our parts cover such applications as commercial,industrial, and automotives areas.

We are looking forward to setting up business relationship with you and hope to provide you with the best service and solution. Let us make a better world for our industry!



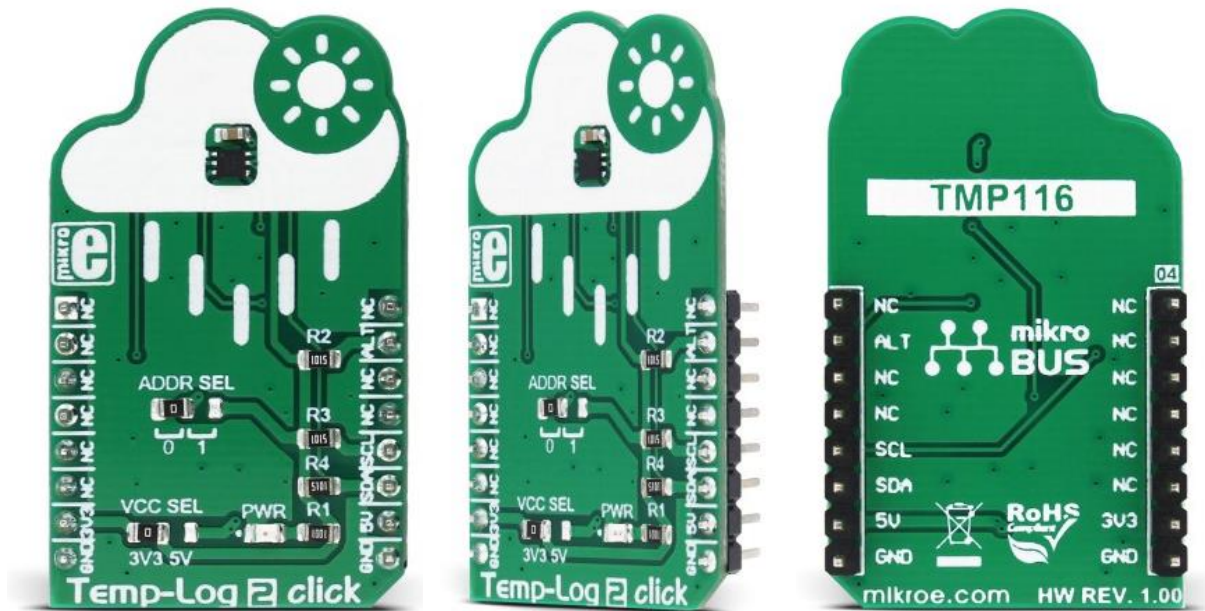
Contact us

Tel: +86-755-8981 8866 Fax: +86-755-8427 6832

Email & Skype: info@chipsmall.com Web: www.chipsmall.com

Address: A1208, Overseas Decoration Building, #122 Zhenhua RD., Futian, Shenzhen, China





Temp-Log 2 click

PID: MIKROE-3004

Weight: 22 g

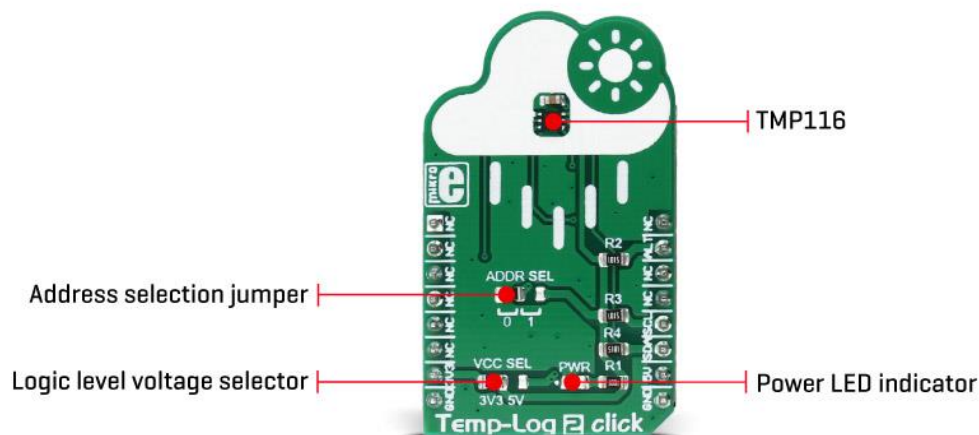
Temp-Log 2 click is a precise ambient temperature measurement device, equipped with the additional non-volatile (EEPROM) memory that can be used to permanently store system configuration, and 64 bits of general-purpose EEPROM, used for logging application specific or user preference data. This click covers a range of temperatures from -55°C to $+125^{\circ}\text{C}$ with the highest accuracy of $\pm 0.2^{\circ}\text{C}$, in the range of -10°C to 85°C , exceeding the accuracy of CLASS A RTD. The device can also send an ALERT signal to the INT pin of the mikroBUS™ every time programmed temperature thresholds are exceeded.

When the device is reset, the configuration values programmed to the EEPROM memory of the sensor IC are copied to the respective register map locations. This allows for near-autonomous operation of the device, without the need to initialize the sensor configuration parameters after every power cycle. These features make the Temp-Log click a perfect choice for temperature measurement in a wide variety of communication, consumer, computer, industrial and similar applications, with an addition of user data storage space.

How does it work?

The main active component used on this click is the TMP116, high-accuracy, low-power, digital temperature sensor, from Texas Instruments. The TMP116 utilizes a diode type temperature sensor with an internal sigma-delta 16bit ADC for the temperature measurement and conversion. The device can work in several operating modes that affect the power consumption, as well as the measurement accuracy. Equipped with 16bit ADC, TMP116 provides measurement step of $0.0078125^{\circ}\text{C}$.

The TMP116 sensor uses the I2C bus for the communication with the MCU. This sensor has six config/data registers, which are used to access all the functions of this device. It also has four additional registers for storing user-specific data in the non-volatile memory area (EEPROM). After initializing the I2C communication with the START condition from the master, a valid device address is expected. This thermal sensor uses the 100100A binary value as the 7bit I2C address, where "A" corresponds to the logical state of the ADDR0 pin. This pin can be set to a HIGH or a LOW logic state by switching the position of the onboard SMD jumper, labeled as ADDR SEL.



The TMP116 sensor is made with the power saving in mind. When the Shutdown mode is engaged, the power consumption is minimal and most of the device sections are not consuming any power. One Shot mode allows to wake up the device, take one measurement, update the registers, and revert to the Shutdown mode again. This allows for a minimum power consumption. To allow One Shot mode, the device needs to be put into the Shutdown mode first. The most power is consumed by the Continuous mode. This mode allows setting the integration and the standby time. Integration time actively burst-samples the thermal data, reducing the noise error by averaging the result. Allowing longer standby duration prevents too much power consumption, as well as the additional self-heating of the sensor IC which would affect the accuracy of the measurement.

The 16bit Configuration register is used to configure all the working parameters of the sensor: working mode (one-shot mode, continuous conversion mode, and shutdown mode), measurement conversion and integration parameters, the polarity of the ALERT pin, DATA_RDY status, non-volatile memory busy status, and so on. There is also a copy of this register in the non-volatile memory, which can be independently changed. After the power on, the content of the non-volatile Configuration register will be copied to its volatile counterpart allowing settings retention, even after power down.

To write data to the non-volatile memory locations, it is necessary to first unlock the EUN lock bit in the EEPROM Unlock register. After the EEPROM unlock, it is possible to write in the EEPROM locations. Four general purpose EEPROM register locations can be used for storing any type of data. Writing data to the configuration registers will mirror the data to the respective EEPROM locations. EEPROM Unlock register also contains the EEPROM_Busy bit, which indicates the readiness of the EEPROM. If this bit is 0, the writing to EEPROM is possible. This bit mirrors the same bit in the Configuration register.

There are two more 16bit registers used to set the high and low temperature threshold, which also have their non-volatile copies. Depending on the ALERT mode bit in the Configuration register, the temperature threshold values in these registers will be used to trigger an event on the ALERT pin, routed to the mikroBUS™ INT pin. This pin is pulled HIGH on this Click board™ by a resistor, so it is a good idea to configure it as active LOW, by using the polarity bit in the Configuration register.

The TMP116 device contains a register with the unique device ID, which is factory programmed to read only locations. Additionally, the general purpose EEPROM registers are pre-programmed with one more unique ID, which allows NIST traceability. The TMP116 units are 100% tested on a production setup that is NIST traceable and verified with equipment that is calibrated to ISO/IEC 17025 accredited standards. If the NIST traceability is not required, general purpose EEPROM registers can be freely overwritten.

MikroElektronika provides libraries and functions which simplify working with this device. For more detailed information on the functionality of this device, TMP116 datasheet can be consulted.

Temp-Log 2 click is capable of working with both 3.3V and 5V systems. The desired operational voltage can be selected by the VCC SEL SMD jumper. SCL and SDA lines are both pulled HIGH by the onboard resistors, so the Temp-Log 2 click is ready to be used right out of the box.

Specifications

Type	Temperature
Applications	Can be used for temperature measurement in a wide variety of communication, consumer, computer, industrial and similar applications - with an addition of the user data storage space
On-board modules	TMP116, a high-accuracy, low-power, digital temperature sensor, from Texas Instruments
Key Features	Wide range of measurements with a high accuracy that exceeds even the accuracy of the RTD devices, low power consumption, non-volatile memory that offers configuration parameters storage, as well as the user-specific data
Interface	I2C
Input Voltage	3.3V or 5V
Click board size	M (42.9 x 25.4 mm)

Pinout diagram

This table shows how the pinout on **Temp-Log 2 click** corresponds to the pinout on the mikroBUS™ socket (the latter shown in the two middle columns).

Notes	Pin					Pin	Notes
	NC	1	AN	PWM	16	NC	
	NC	2	RST	INT	15	ALT	Alert/INT

	NC	3	CS	RX	14	NC	
	NC	4	SCK	TX	13	NC	
	NC	5	MISO	SCL	12	SCL	I2C Clock
	NC	6	MOSI	SDA	11	SDA	I2C Data
Power Supply	+3V3	7	3.3V	5V	10	+5V	Power Supply
Ground	GND	8	GND	GND	9	GND	Ground

Temp-Log click characteristics

Description	Min	Typ	Max	Unit
Temperature measurement range	-55		+125	°C
Temperature measurement accuracy	± 0.2		±0.3	°C
I2C clock speed	1		400	kHz

Onboard settings and indicators

Label	Name	Default	Description
LD1	PWR		Power LED indicator
JP1	ADDR SEL	Left	I2C address LSB selection: left position '0', right position '1'

JP2	VCC SEL	Left	Power supply voltage selection: left position 3V3, right position 5V
-----	---------	------	--

Software support

We provide a library for Temp-Log 2 click on our LibStock page, as well as a demo application (example), developed using MikroElektronika compilers and mikroSDK. The provided click library is mikroSDK standard compliant. The demo application can run on all the main MikroElektronika development boards.

Library Description

Library initializes and defines I2C driver and performs communication with device registers, reading and writing. Library also performs temperature measurement and converts 16-bit temperature data to the celsius value. Library has the ability to perform EEPROM programming, and data which is written to the EEPROM will be saved after power down. After reset command data in EEPROM will be updated to the device registers. For more details check documentation.

Key functions

`uint8_t templog2_writeReg(uint8_t register_address, uint16_t transfer_data)`- Function writes 16-bit data to register.

`uint8_t templog2_readReg(uint8_t register_address, uint16_t *dataOut)`- Function reads 16-bit data from register.

`uint8_t templog2_readTemp(float *tempOut, uint8_t *tempSign)`- Function gets 16-bit temperature data, converts value to celsius unit and returns temperature limit status.

`uint8_t templog2_setMode(uint8_t opMode, uint8_t alertMode)`- Function sets device in desired operation mode and alert mode, which determines how temperature limit status be set.

Example description

The application is composed of three sections :

- System Initialization - Initializes peripherals and pins.
- Application Initialization - Initializes I2C driver and performs device configuration. Sets temperature limit, high limit to 25 Celsius and low limit to 0 Celsius. Sets total active conversion time to 250 ms and 8 average samples. Also sets Shutdown Mode as default mode, and after device reset puts device in Continuous Conversion Mode. High limit status will be set when temperature cross over the determined high limit temperature value. Low limit status will be set when temperature falls below the determined low limit temperature value.
- Application Task - (code snippet) - Logs temperature value in celsius unit on USBUART and also logs message when high limit or low limit temperature is detected.

```

void applicationTask()
{
  checkLimit = templog2_readTemp( &temperature, &temperatureSign );
  FloatToStr( temperature, text );
  mikrobus_logWrite( "Temperature is: ", _LOG_TEXT );

  if (temperatureSign == 0)
  {
    mikrobus_logWrite( "-", _LOG_TEXT );
  }
  mikrobus_logWrite( text, _LOG_TEXT );
  mikrobus_logWrite( " Celsius", _LOG_LINE );

  if (checkLimit == 2)
  {
    mikrobus_logWrite( "High temperature limit detection!", _LOG_LINE );
  }
  if (checkLimit == 1)
  {
    mikrobus_logWrite( "Low temperature limit detection!", _LOG_LINE );
  }
  mikrobus_logWrite( "", _LOG_LINE );
}

```

`{EXAMPLE_ADDITIONAL_FUNCTIONS}`

The full application code, and ready to use projects can be found on our [LibStock](#) page.

Other mikroE Libraries used in the example:

- Conversions
- I2C
- UART

Additional notes and information

Depending on the development board you are using, you may need USB UART click, USB UART 2 click or RS232 click to connect to your PC, for development systems with no UART to USB interface available on the board. The terminal available in all MikroElektronika compilers, or any other terminal application of your choice, can be used to read the message.

mikroSDK

This click board is supported with mikroSDK - MikroElektronika Software Development Kit. To ensure proper operation of mikroSDK compliant click board demo applications, mikroSDK should be downloaded from the [LibStock](#) and installed for the compiler you are using.

For more information about mikroSDK, visit the [official page](#).

Downloads

[mikroBUS™ Standard specification](#)

[LibStock: mikroSDK](#)

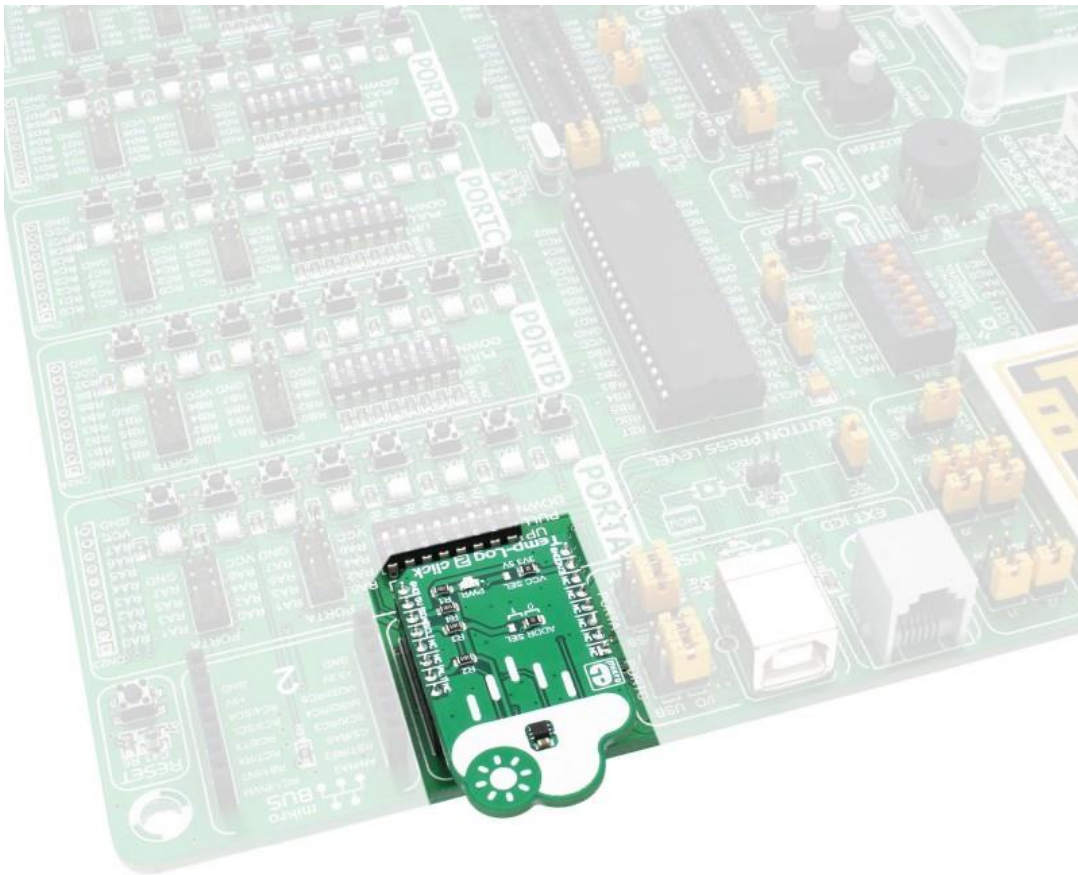
[Temp-Log 2 click schematic](#)

[Temp-Log 2 click: 2D and 3D files](#)

[TMP116 datasheet](#)

[Libstock: Temp-Log 2 click library](#)

[Temp-Log 2 click: 2D and 3D files](#)



<https://www.mikroe.com/temp-log-2-click> 5-11-18