



Chipsmall Limited consists of a professional team with an average of over 10 year of expertise in the distribution of electronic components. Based in Hongkong, we have already established firm and mutual-benefit business relationships with customers from,Europe,America and south Asia,supplying obsolete and hard-to-find components to meet their specific needs.

With the principle of “Quality Parts,Customers Priority,Honest Operation,and Considerate Service”,our business mainly focus on the distribution of electronic components. Line cards we deal with include Microchip,ALPS,ROHM,Xilinx,Pulse,ON,Everlight and Freescale. Main products comprise IC,Modules,Potentiometer,IC Socket,Relay,Connector.Our parts cover such applications as commercial,industrial, and automotives areas.

We are looking forward to setting up business relationship with you and hope to provide you with the best service and solution. Let us make a better world for our industry!



## Contact us

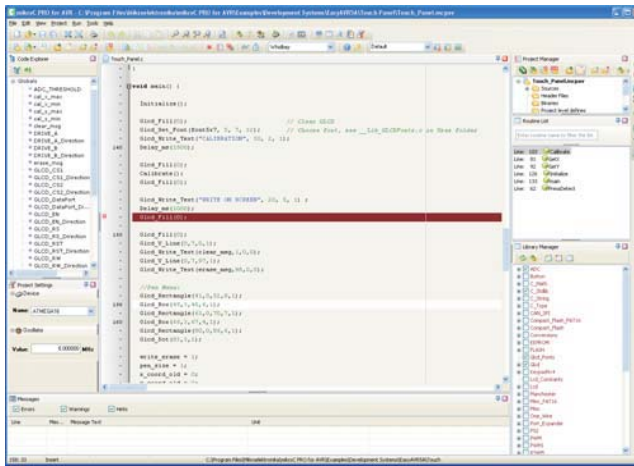
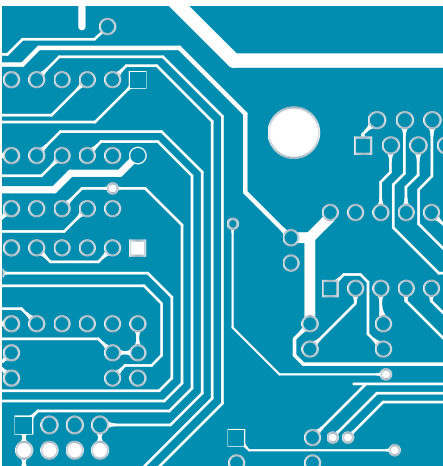
Tel: +86-755-8981 8866 Fax: +86-755-8427 6832

Email & Skype: info@chipsmall.com Web: www.chipsmall.com

Address: A1208, Overseas Decoration Building, #122 Zhenhua RD., Futian, Shenzhen, China



# mikroC PRO for AVR



Develop your applications quickly and easily with the world's most intuitive mikroC PRO for AVR Microcontrollers.

Highly sophisticated IDE provides the power you need with the simplicity of a Windows based point-and-click environment.

With useful implemented tools, many practical code examples, broad set of built-in routines, and a comprehensive Help, mikroC PRO for AVR makes a fast and reliable tool, which can satisfy needs of experienced engineers and beginners alike.

**December 2008.****Reader's note****DISCLAIMER:**

mikroC PRO for AVR and this manual are owned by mikroElektronika and are protected by copyright law and international copyright treaty. Therefore, you should treat this manual like any other copyrighted material (e.g., a book). The manual and the compiler may not be copied, partially or as a whole without the written consent from the mikroElektronika. The PDF-edition of the manual can be printed for private or local use, but not for distribution. Modifying the manual or the compiler is strictly prohibited.

**HIGH RISK ACTIVITIES:**

The mikroC PRO for AVR compiler is not fault-tolerant and is not designed, manufactured or intended for use or resale as on-line control equipment in hazardous environments requiring fail-safe performance, such as in the operation of nuclear facilities, aircraft navigation or communication systems, air traffic control, direct life support machines, or weapons systems, in which the failure of the Software could lead directly to death, personal injury, or severe physical or environmental damage ("High Risk Activities"). mikroElektronika and its suppliers specifically disclaim any express or implied warranty of fitness for High Risk Activities.

**LICENSE AGREEMENT:**

By using the mikroC PRO for AVR compiler, you agree to the terms of this agreement. Only one person may use licensed version of mikroC PRO for AVR compiler at a time. Copyright © mikroElektronika 2003 - 2008.

This manual covers mikroC PRO for AVR version 1.23 and the related topics. Newer versions may contain changes without prior notice.

**COMPILER BUG REPORTS:**

The compiler has been carefully tested and debugged. It is, however, not possible to guarantee a 100 % error free product. If you would like to report a bug, please contact us at the address [office@mikroe.com](mailto:office@mikroe.com). Please include next information in your bug report:

- Your operating system
- Version of mikroC PRO for AVR
- Code sample
- Description of a bug

**CONTACT US:**

mikroElektronika  
Voice: + 381 (11) 36 28 830  
Fax: + 381 (11) 36 28 831  
Web: [www.mikroe.com](http://www.mikroe.com)  
E-mail: [office@mikroe.com](mailto:office@mikroe.com)

*Windows is a Registered trademark of Microsoft Corp. All other trade and/or services marks are the property of the respective owners.*

---

# Table of Contents

---

<b>CHAPTER 1</b>	Introduction
<b>CHAPTER 2</b>	mikroC PRO for AVR Environment
<b>CHAPTER 3</b>	mikroC PRO for AVR Specifics
<b>CHAPTER 4</b>	AVR Specifics
<b>CHAPTER 5</b>	mikroC PRO for AVR Language Reference
<b>CHAPTER 6</b>	mikroC PRO for AVR Libraries

---

**CHAPTER 1**

Features . . . . .	2
Where to Start . . . . .	3
mikroElektronika Associates License Statement and Limited Warranty . . . . .	4
IMPORTANT - READ CAREFULLY . . . . .	4
LIMITED WARRANTY . . . . .	5
HIGH RISK ACTIVITIES . . . . .	6
GENERAL PROVISIONS . . . . .	6
Technical Support . . . . .	7
How to Register . . . . .	8
Who Gets the License Key . . . . .	8
How to Get License Key . . . . .	8
After Receiving the License Key . . . . .	10

**CHAPTER 2**

IDE Overview . . . . .	12
Main Menu Options . . . . .	13
File Menu Options . . . . .	14
Edit Menu Options . . . . .	15
Find Text . . . . .	17
Replace Text . . . . .	17
Find In Files . . . . .	18
Go To Line . . . . .	18
Regular expressions . . . . .	19
View Menu Options . . . . .	20
Toolbars . . . . .	21
File Toolbar . . . . .	21
Edit Toolbar . . . . .	21
Advanced Edit Toolbar . . . . .	22
Find/Replace Toolbar . . . . .	22
Project Toolbar . . . . .	23
Build Toolbar . . . . .	23
Debugger . . . . .	24
Styles Toolbar . . . . .	25
Tools Toolbar . . . . .	25
Project Menu Options . . . . .	26

---

Run Menu Options .....	28
Tools Menu Options .....	30
Help Menu Options .....	31
Keyboard Shortcuts .....	32
mikroc pro for avr ide .....	35
IDE Overview .....	35
Customizing IDE Layout .....	37
Docking Windows .....	37
Saving Layout .....	38
Auto Hide .....	39
Advanced Code Editor .....	40
Advanced Editor Features .....	40
Code Assistant .....	41
Code Folding .....	42
Parameter Assistant .....	43
Code Templates (Auto Complete) .....	43
Auto Correct .....	43
Spell Checker .....	44
Bookmarks .....	44
Goto Line .....	44
Comment / Uncomment .....	44
Code Explorer .....	45
Routine List .....	46
Project Manager .....	47
Project Settings Window .....	49
Library Manager .....	50
Error Window .....	52
Statistics .....	53
Memory Usage Windows .....	53
RAM Memory .....	53
Rx Memory Space .....	53
Data Memory Space .....	54
Special Function Registers .....	54
General Purpose Registers .....	55
ROM Memory .....	55
ROM Memory Usage .....	55

---

---

ROM Memory Allocation .....	56
Procedures Windows .....	56
Procedures Size Window .....	57
Procedures Locations Window .....	57
HTML Window .....	58
Macro Editor .....	59
Integrated Tools .....	60
USART Terminal .....	60
ASCII Chart .....	61
EEPROM Editor .....	62
7 Segment Display Decoder .....	63
UDP Terminal .....	64
Graphic LCD Bitmap Editor .....	65
LCD Custom Character .....	66
Options .....	67
Code editor .....	67
Tools .....	67
Output settings .....	68
Regular Expressions .....	69
Introduction .....	69
Simple matches .....	69
Escape sequences .....	69
Character classes .....	70
Metacharacters .....	70
Metacharacters - Line separators .....	71
Metacharacters - Predefined classes .....	71
Metacharacters - Word boundaries .....	72
Metacharacters - Iterators .....	72
Metacharacters - Alternatives .....	73
Metacharacters - Subexpressions .....	74
Metacharacters - Backreferences .....	74
mikroC PRO for AVR Command Line Options .....	75
tutorials .....	76
Projects .....	76
New Project .....	76
New Project Wizard Steps .....	77

---

---

Customizing Projects .....	80
Edit Project .....	80
Managing Project Group .....	80
Add/Remove Files from Project .....	80
Project Level Defines: .....	82
Source Files .....	83
Managing Source Files .....	83
Creating new source file .....	83
Opening an existing file .....	83
Printing an open file .....	84
Saving file .....	84
Saving file under a different name .....	84
Closing file .....	84
Clean Project Folder .....	85
Clean Project Folder .....	85
Compilation .....	86
Output Files .....	86
Assembly View .....	86
Error Messages .....	87
Compiler Error Messages .....	87
Compiler Warning Messages .....	90
Linker Error Messages .....	90
Software Simulator Overview .....	91
Watch Window .....	91
Stopwatch Window .....	93
RAM Window .....	94
Software Simulator Options .....	95
Creating New Library .....	96
Multiple Library Versions .....	96



---

**CHAPTER 3**

Notes: .....	98
ANSI Standard Issues .....	98
Divergence from the ANI C Standard .....	98
Predefined Globals and Constants .....	99
Predefined project level defines .....	99
Accessing Individual Bits .....	100
Accessing Individual Bits Of Variables .....	100
sbit type .....	100
bit type .....	101
Interrupts .....	102
Function Calls from Interrupt .....	102
Linker Directives .....	104
Directive absolute .....	104
Directive org .....	104
Directive orgal .....	105
Indirect Function Calls .....	105
Built-in Routines .....	106
Lo .....	106
Hi .....	107
Higher .....	107
Highest .....	107
Delay_us .....	108
Delay_ms .....	108
Vdelay_ms .....	108
Delay_Cyc .....	109
Clock_kHz .....	109
Clock_MHz .....	109
Get_Fosc_kHz .....	110
Code Optimization .....	110
Constant folding .....	110
Constant propagation .....	110
Copy propagation .....	110
Value numbering .....	110
"Dead code" elimination .....	110
Stack allocation .....	111

Local vars optimization .....	111
Better code generation and local optimization .....	111

#### CHAPTER 4

Types Efficiency .....	113
Nested Calls Limitations .....	114
Important notes: .....	114
AVR Memory Organization .....	115
Program Memory (ROM) .....	115
Data Memory .....	116
Memory Type Specifiers .....	117
code .....	117
data .....	117
rx .....	118
io .....	118
sfr .....	118

#### CHAPTER 5

mikroC PRO for AVR language Reference .....	120
Lexical Elements Overview .....	122
Whitespace .....	122
Whitespace in Strings .....	122
Line Splicing with Backslash (\) .....	123
Comments .....	123
C comments .....	123
C++ comments .....	124
Nested comments .....	124
Tokens .....	125
Token Extraction Example .....	125
Constants .....	126
Integer Constants .....	127
Long and Unsigned Suffixes .....	127
Decimal .....	127
Hexadecimal .....	128
Binary .....	128
Octal .....	128

---

Floating Point Constants .....	129
Character Constants .....	130
Escape Sequences .....	130
Disambiguation .....	131
String Constants .....	132
Line Continuation with Backslash .....	132
Enumeration Constants .....	133
Constant Expressions .....	135
Keywords .....	136
Identifiers .....	137
Case Sensitivity .....	137
Uniqueness and Scope .....	137
Identifier Examples .....	137
Punctuators .....	138
Brackets .....	138
Parentheses .....	138
Braces .....	139
Comma .....	139
Semicolon .....	139
Colon .....	140
Asterisk (Pointer Declaration) .....	140
Equal Sign .....	140
Pound Sign (Preprocessor Directive) .....	141
Concepts .....	142
Objects .....	142
Objects and Declarations .....	142
Lvalues .....	143
Rvalues .....	143
Scope and Visibility .....	144
Scope .....	144
Visibility .....	144
Name Spaces .....	146
Duration .....	147
Static Duration .....	147
Local Duration .....	147
Types .....	149

---

---

Type Categories .....	149
Fundamental Types .....	150
Arithmetic Types .....	150
Integral Types .....	150
Floating-point Types .....	151
Enumerations .....	152
Enumeration Declaration .....	152
Anonymous Enum Type .....	153
Enumeration Scope .....	153
Void Type .....	154
Void Functions .....	154
Generic Pointers .....	154
Derived Types .....	155
Arrays .....	155
Array Declaration .....	155
Arrays in Expressions .....	156
Multi-dimensional Arrays .....	156
Pointers .....	158
Pointer Declarations .....	158
Null Pointers .....	159
Function Pointers .....	160
Assign an address to a Function Pointer .....	160
Pointer Arithmetic .....	161
Arrays and Pointers .....	161
Assignment and Comparison .....	162
Pointer Addition .....	163
Pointer Subtraction .....	164
Structures .....	165
Structure Declaration and Initialization .....	165
Untagged Structures and Typedefs .....	166
Working with Structures .....	167
Assignment .....	167
Size of Structure .....	167
Structures and Functions .....	167
Structure Member Access .....	168
Accessing Nested Structures .....	169

---

---

Structure Uniqueness .....	169
Unions .....	170
Union Declaration .....	170
Size of Union .....	170
Union Member Access .....	170
Bit Fields .....	172
Bit Fields Declaration .....	172
Bit Fields Access .....	173
Types Conversions .....	174
Standard Conversions .....	175
Arithmetic Conversions .....	175
In details: .....	175
Pointer Conversions .....	176
Explicit Types Conversions (Typecasting) .....	177
Declarations .....	178
Declarations and Definitions .....	178
Declarations and Declarators .....	179
Linkage .....	180
Linkage Rules .....	180
Internal Linkage Rules .....	180
External Linkage Rules .....	180
Storage Classes .....	181
Auto .....	181
Register .....	181
Static .....	182
Extern .....	182
Type Qualifiers .....	183
Qualifier const .....	183
Qualifier volatile .....	183
Typedef Specifier .....	184
asm Declaration .....	185
Automatic Initialization .....	186
Functions .....	187
Function Prototypes .....	188
Function Definition .....	188
Functions reentrancy .....	189

---

---

Function Calls and Argument Conversions .....	190
Function Calls .....	190
Argument Conversions .....	191
Operators .....	193
Operators Precedence and Associativity .....	194
Arithmetic Operators .....	195
Arithmetic Operators Overview .....	195
Binary Arithmetic Operators .....	195
Unary Arithmetic Operators .....	196
Relational Operators .....	197
Relational Operators Overview .....	197
Relational Operators in Expressions .....	197
Bitwise Operators .....	198
Bitwise Operators Overview .....	198
Logical Operations on Bit Level .....	198
Bitwise Shift Operators .....	199
Bitwise vs. Logical .....	199
Logical Operators .....	200
Logical Operators Overview .....	200
Logical Operations .....	200
Logical Expressions and Side Effects .....	201
Logical vs. Bitwise .....	201
Conditional Operator ? : .....	202
Conditional Operator Rules .....	202
Assignment Operators .....	203
Simple Assignment Operator .....	203
Compound Assignment Operators .....	203
Assignment Rules .....	204
Sizeof Operator .....	205
Sizeof Applied to Expression .....	205
Sizeof Applied to Type .....	205
Expressions .....	206
Comma Expressions .....	207
Note .....	207
Statements .....	208
Labeled Statements .....	208

---

---

Expression Statements .....	209
Selection Statements .....	209
If Statement .....	210
Nested If statements .....	210
Note .....	210
Switch Statement .....	211
Nested switch .....	212
Iteration Statements (Loops) .....	212
While Statement .....	212
Do Statement .....	213
For Statement .....	214
Jump Statements .....	215
Break and Continue Statements .....	215
Break Statement .....	215
Continue Statement .....	215
Goto Statement .....	216
Return Statement .....	217
Compound Statements (Blocks) .....	217
Preprocessor .....	218
Preprocessor Directives .....	219
Line Continuation with Backslash (\) .....	219
Macros .....	220
Macros with Parameters .....	221
Undefining Macros .....	222
File Inclusion .....	223
Explicit Path .....	223
Note .....	223
Preprocessor Operators .....	224
Operator # .....	224
Operator ## .....	224
Note .....	224
Conditional Compilation .....	225
Directives #if, #elif, #else, and #endif .....	225
Directives #ifdef and #ifndef .....	226

---

**CHAPTER 6**

Hardware AVR-specific Libraries .....	228
Standard ANSI C Libraries .....	229
Miscellaneous Libraries .....	229
Library Dependencies .....	229
ADC Library .....	231
ADC_Read .....	231
Library Example .....	232
HW Connection .....	233
CANSPI Library .....	234
External dependencies of CANSPI Library .....	235
Library Routines .....	235
CANSPISetOperationMode .....	236
CANSPIGetOperationMode .....	236
CANSPIInitialize .....	237
CANSPISetBaudRate .....	239
CANSPISetMask .....	240
CANSPISetFilter .....	241
CANSPIRead .....	242
CANSPIWrite .....	243
CANSPI Constants .....	244
CANSPI_OP_MODE .....	244
CANSPI_CONFIG_FLAGS .....	244
CANSPI_TX_MSG_FLAGS .....	245
CANSPI_RX_MSG_FLAGS .....	246
CANSPI_MASK .....	246
CANSPI_FILTER .....	247
Library Example .....	247
HW Connection .....	250
Compact Flash Library .....	251
External dependencies of Compact Flash Library .....	252
Library Routines .....	253
Cf_Init .....	254
Cf_Detect .....	255
Cf_Enable .....	255
Cf_Disable .....	255



---

Cf_Read_Init .....	256
Cf_Read_Byte .....	256
Cf_Write_Init .....	257
Cf_Write_Byte .....	257
Cf_Read_Sector .....	258
Cf_Write_Sector .....	258
Cf_Fat_Init .....	259
Cf_Fat_QuickFormat .....	259
Cf_Fat_Assign .....	260
Cf_Fat_Reset .....	261
Cf_Fat_Read .....	261
Cf_Fat_Rewrite .....	262
Cf_Fat_Append .....	262
Cf_Fat_Delete .....	262
Cf_Fat_Write .....	263
Cf_Fat_Set_File_Date .....	264
Cf_Fat_Get_File_Date .....	265
Cf_Fat_Get_File_Size .....	266
Cf_Fat_Get_Swap_File .....	267
Library Example .....	269
HW Connection .....	274
EEPROM Library .....	275
Library Routines .....	275
EEPROM_Read .....	275
EEPROM_Write .....	276
Library Example .....	277
Flash Memory Library .....	278
Library Routines .....	278
FLASH_Read_Byte .....	278
FLASH_Read_Bytes .....	279
FLASH_Read_Word .....	279
FLASH_Read_Words .....	280
Library Example .....	280
Graphic LCD Library .....	282
External dependencies of Graphic LCD Library .....	282
Library Routines .....	283

---

---

Glcd_Init . . . . .	284
Glcd_Set_Side . . . . .	285
Glcd_Set_X . . . . .	285
Glcd_Set_Page . . . . .	286
Glcd_Read_Data . . . . .	286
Glcd_Write_Data . . . . .	287
Glcd_Fill . . . . .	287
Glcd_Dot . . . . .	288
Glcd_Line . . . . .	289
Glcd_V_Line . . . . .	289
Glcd_H_Line . . . . .	290
Glcd_Rectangle . . . . .	290
Glcd_Box . . . . .	291
Glcd_Circle . . . . .	291
Glcd_Set_Font . . . . .	292
Glcd_Write_Char . . . . .	293
Glcd_Write_Text . . . . .	294
Glcd_Image . . . . .	295
Library Example . . . . .	295
HW Connection . . . . .	298
Keypad Library . . . . .	299
External dependencies of Keypad Library . . . . .	299
Library Routines . . . . .	299
Keypad_Init . . . . .	300
Keypad_Key_Press . . . . .	301
Keypad_Key_Click . . . . .	301
Library Example . . . . .	301
HW Connection . . . . .	304
Lcd Library . . . . .	305
External dependencies of Lcd Library . . . . .	305
Library Routines . . . . .	306
Lcd_Init . . . . .	307
Lcd_Out . . . . .	308
Lcd_Out_Cp . . . . .	308
Lcd_Chr . . . . .	309
Lcd_Chr_Cp . . . . .	309

---

---

Lcd_Cmd .....	310
Available Lcd Commands .....	310
Library Example .....	311
Manchester Code Library .....	313
External dependencies of Manchester Code Library .....	314
Library Routines .....	314
Man_Receive_Init .....	315
Man_Receive .....	316
Man_Send_Init .....	316
Man_Send .....	317
Man_Synchro .....	317
Man_Break .....	318
Library Example .....	319
Connection Example .....	321
Multi Media Card Library .....	323
Secure Digital Card .....	323
External dependencies of MMC Library .....	323
Library Routines .....	324
Mmc_Init .....	325
Mmc_Read_Sector .....	325
Mmc_Write_Sector .....	326
Mmc_Read_Cid .....	326
Mmc_Read_Csd .....	326
Mmc_Fat_Init .....	327
Mmc_Fat_QuickFormat .....	328
Mmc_Fat_Assign .....	329
Mmc_Fat_Reset .....	330
Mmc_Fat_Rewrite .....	330
Mmc_Fat_Append .....	330
Mmc_Fat_Read .....	331
Mmc_Fat_Delete .....	331
Mmc_Fat_Write .....	331
Mmc_Fat_Set_File_Date .....	332
Mmc_Fat_Get_File_Date .....	332
Mmc_Fat_Get_File_Size .....	333
Mmc_Fat_Get_Swap_File .....	334

---

---

Library Example . . . . .	335
HW Connection . . . . .	346
OneWire Library . . . . .	347
External dependencies of OneWire Library . . . . .	347
Library Routines . . . . .	348
Ow_Reset . . . . .	348
Ow_Read . . . . .	349
Ow_Write . . . . .	349
Library Example . . . . .	350
HW Connection . . . . .	352
Port Expander Library . . . . .	353
External dependencies of Port Expander Library . . . . .	353
Library Routines . . . . .	353
Expander_Init . . . . .	354
Expander_Read_Byte . . . . .	355
Expander_Write_Byte . . . . .	355
Expander_Read_PortA . . . . .	356
Expander_Read_PortB . . . . .	356
Expander_Read_PortAB . . . . .	357
Expander_Write_PortA . . . . .	358
Expander_Write_PortB . . . . .	359
Expander_Write_PortAB . . . . .	360
Expander_Set_DirectionPortA . . . . .	361
Expander_Set_DirectionPortB . . . . .	361
Expander_Set_DirectionPortAB . . . . .	362
Expander_Set_PullUpsPortA . . . . .	362
Expander_Set_PullUpsPortB . . . . .	363
Expander_Set_PullUpsPortAB . . . . .	363
Library Example . . . . .	364
HW Connection . . . . .	365
PS/2 Library . . . . .	366
External dependencies of PS/2 Library . . . . .	366
Library Routines . . . . .	366
Ps2_Config . . . . .	366
Ps2_Key_Read . . . . .	366
Ps2_Config . . . . .	367

---

Ps2_Key_Read .....	368
Special Function Keys .....	369
Library Example .....	370
HW Connection .....	371
PWM Library .....	372
Library Routines .....	372
Predefined constants used in PWM library .....	372
PWM_Init .....	374
PWM_Set_Duty .....	376
PWM_Start .....	376
PWM_Stop .....	376
PWM1_Init .....	377
PWM1_Set_Duty .....	379
PWM1_Start .....	379
PWM1_Stop .....	379
Library Example .....	380
HW Connection .....	381
PWM 16 bit Library .....	382
Library Routines .....	382
Predefined constants used in PWM-16bit library .....	382
PWM16bit_Init .....	384
PWM16bit_Change_Duty .....	386
PWM16bit_Start .....	387
PWM16bit_Stop .....	387
Library Example .....	388
HW Connection .....	389
RS-485 Library .....	390
External dependencies of RS-485 Library .....	390
Library Routines .....	391
RS485Master_Init .....	391
RS485Master_Receive .....	392
RS485Master_Send .....	393
RS485Slave_Init .....	394
RS485Slave_Receive .....	395
RS485Slave_Send .....	396
Library Example .....	396

---

---

HW Connection .....	400
Message format and CRC calculations .....	401
Software I <sub>2</sub> C Library .....	402
External dependencies of Soft_I2C Library .....	402
Library Routines .....	403
Soft_I2C_Init .....	403
Soft_I2C_Start .....	404
Soft_I2C_Read .....	404
Soft_I2C_Write .....	405
Soft_I2C_Stop .....	405
Soft_I2C_Break .....	406
Library Example .....	407
Software SPI Library .....	410
External dependencies of Software SPI Library .....	410
Library Routines .....	411
Soft_SPI_Init .....	411
Soft_SPI_Read .....	412
Soft_SPI_Write .....	412
Library Example .....	413
Software UART Library .....	415
External dependencies of Software UART Library .....	415
Library Routines .....	415
Soft_UART_Init .....	416
Soft_UART_Read .....	417
Soft_UART_Write .....	418
Soft_UART_Break .....	419
Library Example .....	420
Sound Library .....	421
External dependencies of Sound Library .....	421
Library Routines .....	421
Sound_Init .....	422
Sound_Play .....	422
Library Example .....	423
HW Connection .....	425
SPI Library .....	426
Library Routines .....	426

---

---

SPI1_Init .....	426
SPI1_Init_Advanced .....	427
SPI1_Read .....	428
SPI1_Write .....	428
Library Example .....	429
HW Connection .....	430
SPI Ethernet Library .....	431
External dependencies of SPI Ethernet Library .....	432
Library Routines .....	433
SPI_Ethernet_Init .....	434
SPI_Ethernet_Enable .....	436
SPI_Ethernet_Disable .....	437
SPI_Ethernet_doPacket .....	438
SPI_Ethernet_putByte .....	439
SPI_Ethernet_putBytes .....	439
SPI_Ethernet_putConstBytes .....	440
SPI_Ethernet_putString .....	440
SPI_Ethernet_putConstString .....	441
SPI_Ethernet_getByte .....	441
SPI_Ethernet_getBytes .....	442
SPI_Ethernet_UserTCP .....	443
SPI_Ethernet_UserUDP .....	444
Library Example .....	444
HW Connection .....	452
SPI Graphic Lcd Library .....	453
External dependencies of SPI Graphic Lcd Library .....	453
Library Routines .....	453
SPI_Glcd_Init .....	454
SPI_Glcd_Set_Side .....	455
SPI_Glcd_Set_Page .....	455
SPI_Glcd_Set_X .....	456
SPI_Glcd_Read_Data .....	456
SPI_Glcd_Write_Data .....	457
SPI_Glcd_Fill .....	457
SPI_Glcd_Dot .....	458
SPI_Glcd_Line .....	458

---

SPI_Glcd_V_Line .....	459
SPI_Glcd_H_Line .....	459
SPI_Glcd_Rectangle .....	460
SPI_Glcd_Box .....	460
SPI_Glcd_Circle .....	461
SPI_Glcd_Set_Font .....	462
SPI_Glcd_Write_Char .....	463
SPI_Glcd_Write_Text .....	464
SPI_Glcd_Image .....	465
Library Example .....	465
HW Connection .....	468
SPI Lcd Library .....	469
External dependencies of SPI Lcd Library .....	469
Library Routines .....	469
SPI_Lcd_Config .....	470
SPI_Lcd_Out .....	471
SPI_Lcd_Out_Cp .....	471
SPI_Lcd_Chr .....	472
SPI_Lcd_Chr_Cp .....	472
SPI_Lcd_Cmd .....	473
Available Lcd Commands .....	473
Library Example .....	474
HW Connection .....	475
SPI Lcd8 (8-bit interface) Library .....	476
External dependencies of SPI Lcd Library .....	476
Library Routines .....	476
SPI_Lcd8_Config .....	477
SPI_Lcd8_Out .....	478
SPI_Lcd8_Out_Cp .....	478
SPI_Lcd8_Chr .....	479
SPI_Lcd8_Chr_Cp .....	479
SPI_Lcd8_Cmd .....	480
Available Lcd Commands .....	480
Library Example .....	481
HW Connection .....	482
SPI T6963C Graphic Lcd Library .....	483



---

External dependencies of SPI T6963C Graphic Lcd Library . . . . .	483
Library Routines . . . . .	484
SPI_T6963C_Config . . . . .	485
SPI_T6963C_WriteData . . . . .	487
SPI_T6963C_WriteCommand . . . . .	487
SPI_T6963C_SetPtr . . . . .	487
SPI_T6963C_WaitReady . . . . .	488
SPI_T6963C_Fill . . . . .	488
SPI_T6963C_Dot . . . . .	488
SPI_T6963C_Write_Char . . . . .	489
SPI_T6963C_Write_Text . . . . .	490
SPI_T6963C_Line . . . . .	491
SPI_T6963C_Rectangle . . . . .	491
SPI_T6963C_Box . . . . .	492
SPI_T6963C_Circle . . . . .	492
SPI_T6963C_Image . . . . .	493
SPI_T6963C_Sprite . . . . .	493
SPI_T6963C_Set_Cursor . . . . .	494
SPI_T6963C_ClearBit . . . . .	494
SPI_T6963C_SetBit . . . . .	495
SPI_T6963C_NegBit . . . . .	495
SPI_T6963C_DisplayGrPanel . . . . .	496
SPI_T6963C_DisplayTxtPanel . . . . .	496
SPI_T6963C_SetGrPanel . . . . .	496
SPI_T6963C_SetTxtPanel . . . . .	497
SPI_T6963C_PanelFill . . . . .	497
SPI_T6963C_GrFill . . . . .	497
SPI_T6963C_TxtFill . . . . .	498
SPI_T6963C_Cursor_Height . . . . .	498
SPI_T6963C_Graphics . . . . .	498
SPI_T6963C_Text . . . . .	499
SPI_T6963C_Cursor . . . . .	499
SPI_T6963C_Cursor_Blink . . . . .	500
Library Example . . . . .	500
HW Connection . . . . .	505
T6963C Graphic LCD Library . . . . .	506

---

---

External dependencies of T6963C Graphic LCD Library .....	507
Library Routines .....	508
T6963C_Init .....	509
T6963C_WriteData .....	510
T6963C_WriteCommand .....	511
T6963C_SetPtr .....	511
T6963C_WaitReady .....	511
T6963C_Fill .....	512
T6963C_Dot .....	512
T6963C_Write_Char .....	513
T6963C_Write_Text .....	514
T6963C_Line .....	515
T6963C_Rectangle .....	515
T6963C_Box .....	516
T6963C_Circle .....	516
T6963C_Image .....	517
T6963C_Sprite .....	517
T6963C_Set_Cursor .....	518
T6963C_ClearBit .....	518
T6963C_SetBit .....	519
T6963C_NegBit .....	519
T6963C_DisplayGrPanel .....	520
T6963C_DisplayTxtPanel .....	520
T6963C_SetGrPanel .....	521
T6963C_SetTxtPanel .....	521
T6963C_PanelFill .....	522
T6963C_GrFill .....	522
T6963C_TxtFill .....	522
T6963C_Cursor_Height .....	523
T6963C_Graphics .....	523
T6963C_Text .....	523
T6963C_Cursor .....	524
T6963C_Cursor_Blink .....	524
Library Example .....	525
HW Connection .....	529
TWI Library .....	530

---