



Chipsmall Limited consists of a professional team with an average of over 10 year of expertise in the distribution of electronic components. Based in Hongkong, we have already established firm and mutual-benefit business relationships with customers from,Europe,America and south Asia,supplying obsolete and hard-to-find components to meet their specific needs.

With the principle of “Quality Parts,Customers Priority,Honest Operation,and Considerate Service”,our business mainly focus on the distribution of electronic components. Line cards we deal with include Microchip,ALPS,ROHM,Xilinx,Pulse,ON,Everlight and Freescale. Main products comprise IC,Modules,Potentiometer,IC Socket,Relay,Connector.Our parts cover such applications as commercial,industrial, and automotives areas.

We are looking forward to setting up business relationship with you and hope to provide you with the best service and solution. Let us make a better world for our industry!



## Contact us

Tel: +86-755-8981 8866 Fax: +86-755-8427 6832

Email & Skype: info@chipsmall.com Web: www.chipsmall.com

Address: A1208, Overseas Decoration Building, #122 Zhenhua RD., Futian, Shenzhen, China



# RTC™ Board

Manual

*All Mikroelektronika's development systems feature a large number of peripheral modules expanding microcontroller's range of application and making the process of program testing easier. In addition to these modules, it is also possible to use numerous additional modules linked to the development system through the I/O port connectors. Some of these additional modules can operate as stand-alone devices without being connected to the microcontroller.*

**Additional Board**

 **MikroElektronika**

SOFTWARE AND HARDWARE SOLUTIONS FOR EMBEDDED WORLD ...making it simple



## RTC (Real-Time Clock)

A real-time clock is used to keep the real time and date, generate interrupt and provide timer and alarm functions. Due to a battery cell, the operation of the real-time clock is enabled even when the microcontroller's power supply goes off. The real-time clock is linked to a development system via a 2x5 female connector provided on the RTC board and a 2x5 male connector provided on the I/O port of the development system. The real-time clock communicates with the microcontroller using I<sup>2</sup>C serial communication.

DIP switch SW1 is used to select a development system to connect the RTC board to

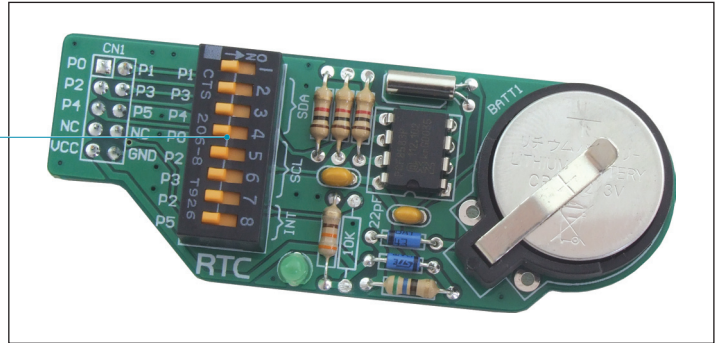


Figure 1: RTC board

DIP switch SW1 is used to select a development system to connect the RTC additional board to. This switch also enables connection between the SDA, SCL and INT-RTC pins provided on the RTC board and a serial I<sup>2</sup>C module built into the microcontroller. Figure 3 shows the pinout of the DIP switch SW1.

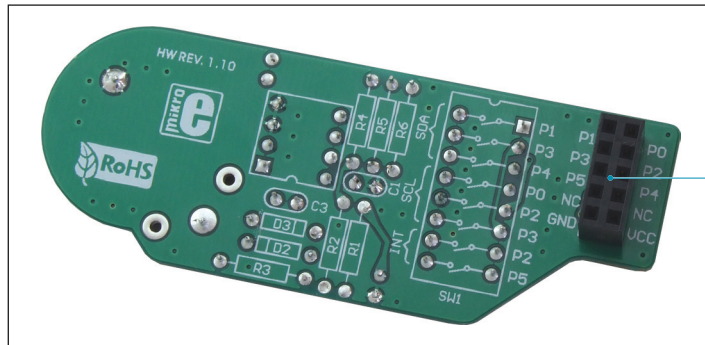


Figure 2: RTC board's bottom view

2x5 female connector enables the additional board to be connected to a development system

The function of pins provided on the PCF8583P circuit that is used for connection with the microcontroller:

- INT - Open drain interrupt output
- SCL - Serial clock line
- SDA - Serial data line

The function of pins provided on the 2x5 female connector CN1:

- P0 - SCL pin for EasyAVR and BIGAVR development systems;
- P1 - SDA pin for EasyAVR and BIGAVR development systems;
- P2 - SCL pin for BIGdsPIC, dsPICPRO, LV32MX and LV24-33 development systems; It is also used as an interrupt pin;
- P3 - SDA pin for BIGdsPIC, dsPICPRO, LV32MX and LV24-33 development systems and SCL pin for EasyPIC, BIGPIC, LV18FJ and EasyLV18 development systems;
- P4 - SDA pin for EasyPIC, BIGPIC, LV18FJ and EasyLV18 development systems;
- P5 - Interrupt pin;



If you want to learn more about our products, please visit our website at [www.mikroe.com](http://www.mikroe.com)

If you are experiencing some problems with any of our products or just need additional information, please place your ticket at [www.mikroe.com/en/support](http://www.mikroe.com/en/support)

If you have any questions, comments or business proposals, do not hesitate to contact us at [office@mikroe.com](mailto:office@mikroe.com)