



Chipsmall Limited consists of a professional team with an average of over 10 year of expertise in the distribution of electronic components. Based in Hongkong, we have already established firm and mutual-benefit business relationships with customers from,Europe,America and south Asia,supplying obsolete and hard-to-find components to meet their specific needs.

With the principle of "Quality Parts,Customers Priority,Honest Operation,and Considerate Service",our business mainly focus on the distribution of electronic components. Line cards we deal with include Microchip,ALPS,ROHM,Xilinx,Pulse,ON,Everlight and Freescale. Main products comprise IC,Modules,Potentiometer,IC Socket,Relay,Connector.Our parts cover such applications as commercial,industrial, and automotives areas.

We are looking forward to setting up business relationship with you and hope to provide you with the best service and solution. Let us make a better world for our industry!



Contact us

Tel: +86-755-8981 8866 Fax: +86-755-8427 6832

Email & Skype: info@chipsmall.com Web: www.chipsmall.com

Address: A1208, Overseas Decoration Building, #122 Zhenhua RD., Futian, Shenzhen, China



MJTP SERIES - 12 MM SQUARE TACT SWITCHES

FEATURES

- SPST momentary action.
- Excellent tactile feed-back (Snap dome).
- Long operating life for high reliability.
- Molded-in terminals minimize wicking of flux or solder.
- Flush, round, keyed or square actuator.
- Thru-hole mounting.

MATERIALS

Case: PBT, color black.
 Actuator: P.O.M. thermoplastic, color black.
 Cover: Stainless steel.
 Terminals: Silver plated brass.
 Shorting Contact: Silver plated phosphor bronze.



MJTP1212

MJTP1212A

MJTP1212B

MJTP1212C

GENERAL SPECIFICATIONS

ELECTRICALS

Contact rating: 50 mA @ 12 VDC
 Insulation resistance: 100 megohms min. (500 VDC)
 Dielectric withstanding voltage: 250 VAC for 1 minute
 Contact resistance: 100 milliohms max.
 Electrical Life: 100,000 cycles min. (1,000,000 cycles available - consult factory)
 Contact bounce: less than 5 msec.

MECHANICALS, THERMALS, ENVIRONMENTALS

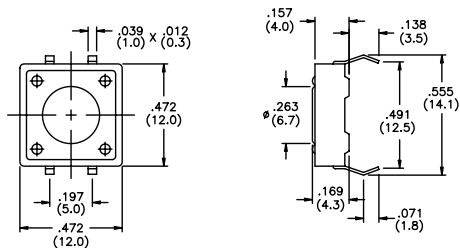
Plunger travel: .012" ± .006" (0.30 ± 0.15 mm)
 Actuation force: 160 grams ± 50 grams (.35 lbs.)
 Operating temperature range: -20°C to +70°C
 Storage temperature range: -30°C to +80°C for 96 hours
 Shock resistance: 30G (peak value) for 11 millisecond per Method 213B, MIL-STD-202F (3 times each on 6 sides).
 Vibration resistance: 10-55-10 Hz. for 1 minute in X, Y and Z planes per Method 201A, MIL-STD-202F (2 hours in each direction).

SOLDERING

Wave soldering: 260°C max. for 5 seconds max..
 Hand soldering: 30 watt iron max. controlled at 320°C for approx. 2 seconds
 Solvent washing: Non-washable.

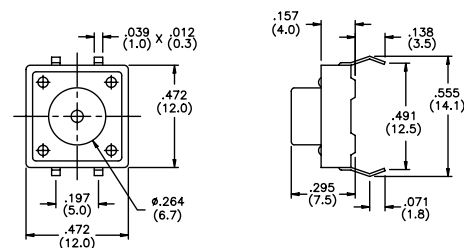
US # MJTP1212 EU # PHAP3320

Flush actuator



US # MJTP1212A EU # PHAP3320A

Round actuator

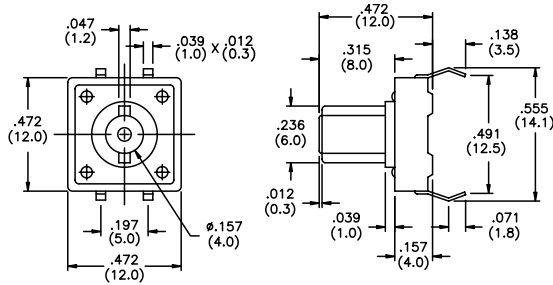


SPECIFICATIONS SUBJECT TO CHANGE WITHOUT NOTICE.

M

US # MJTP1212B EU # PHAP3320B

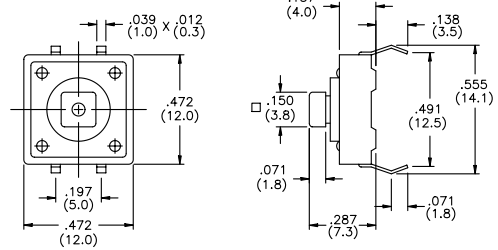
Round keyed actuator



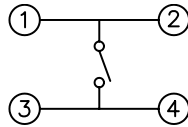
US # MJTP1212C EU # PHAP3321

Square actuator

Caps available - see below

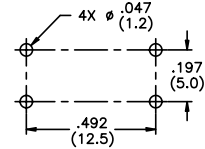


SCHEMATIC



PRINTED CIRCUIT BOARD LAYOUT

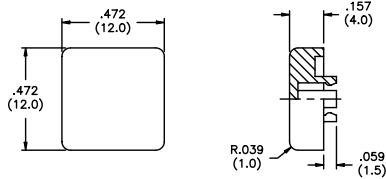
Layout Tolerances;
Linear: ± .004" (± 0,1mm)
Holes: ± .002" (± 0,05mm)



CAPS (for MJTP1212C only)

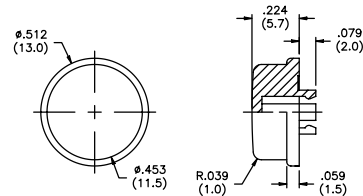
US # MJ121 EU # U5540

Square cap



US # MJ122 EU # U5550

Round cap



M

Note - add digit from table to cap part numbers above for color.
Example - **MJ1212** indicates square black cap.

No.	Color
1	blue
2	black
3	green
5	yellow
6	red
7	ivory

SPECIFICATIONS SUBJECT TO CHANGE WITHOUT NOTICE.