



Chipsmall Limited consists of a professional team with an average of over 10 year of expertise in the distribution of electronic components. Based in Hongkong, we have already established firm and mutual-benefit business relationships with customers from,Europe,America and south Asia,supplying obsolete and hard-to-find components to meet their specific needs.

With the principle of “Quality Parts,Customers Priority,Honest Operation,and Considerate Service”,our business mainly focus on the distribution of electronic components. Line cards we deal with include Microchip,ALPS,ROHM,Xilinx,Pulse,ON,Everlight and Freescale. Main products comprise IC,Modules,Potentiometer,IC Socket,Relay,Connector.Our parts cover such applications as commercial,industrial, and automotives areas.

We are looking forward to setting up business relationship with you and hope to provide you with the best service and solution. Let us make a better world for our industry!



Contact us

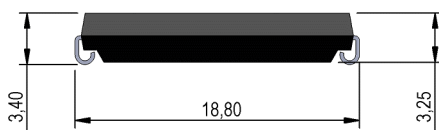
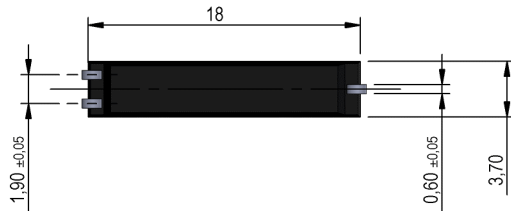
Tel: +86-755-8981 8866 Fax: +86-755-8427 6832

Email & Skype: info@chipsmall.com Web: www.chipsmall.com

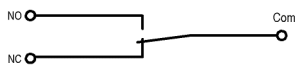
Address: A1208, Overseas Decoration Building, #122 Zhenhua RD., Futian, Shenzhen, China



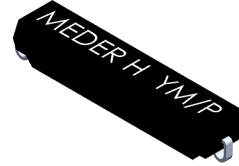
Dimensions mm[inch]
tolerances according to DIN ISO 2768-m
Toleranzen gem. DIN ISO 2768-m



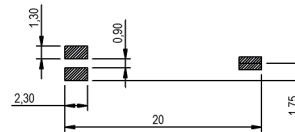
Schematic



Isometric
Scale 2:1
Maßstab 2:1



Recommended PCB Pad Layout

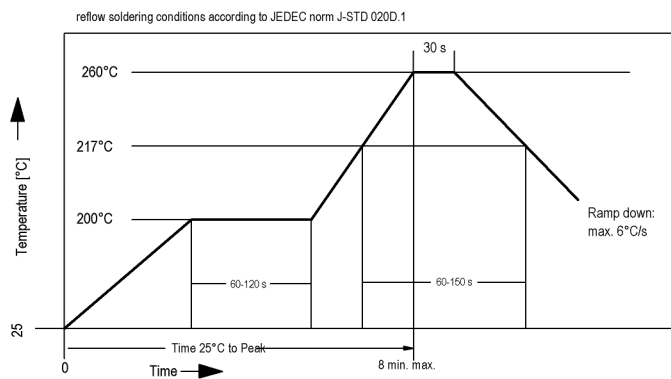


Marking

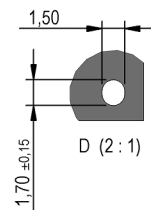
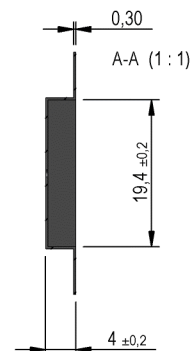
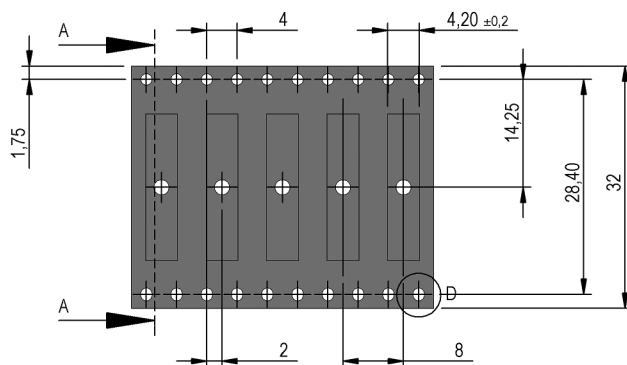
according to EN60062/factory code
gem. EN60062/Fertigungsstätte

MEDER H YM/P

Solder Reflow Profile



Contact packaging orientation





Europe: +49 / 7731 8399 0

| Email: info@standexmeder.com

Item No.:

USA: +1 / 508 295 0771

| Email: salesusa@standexmeder.com

2211000008

Asia: +852 / 2955 1682

| Email: salesasia@standexmeder.com

Item:

MK01-H

Magnetic properties	Conditions	Min	Typ	Max	Unit
Pull-In	at 20°C	42		84	
Test equipment			KMS-11		

Contact Data 94	Conditions	Min	Typ	Max	Unit
Contact-No.			94		
Contact-form			C		
Contact rating	Any DC combination of V & A not to exceed their individual max.'s			10	W
Switching voltage	DC or Peak AC			100	V
Carry current	DC or Peak AC			0,5	A
Switching current	DC or Peak AC			0,5	A
Contact resistance static	Measured with 40% overdrive Start Value			150	mOhm
Breakdown voltage (<21 AT)	according to IEC 255-5	150			VDC

Special Product Data	Conditions	Min	Typ	Max	Unit
Housing material			epoxy resin		
UL File Number			UL-File No. NRNT2.E156887		

Environmental data	Conditions	Min	Typ	Max	Unit
Shock	1/2 sine wave duration 11ms			30	g
Vibration	from 10 - 2000 Hz			20	g
Operating temperature		-20		130	°C
Storage temperature		-35		130	°C
Washability			fully sealed		

General data	Conditions	Min	Typ	Max	Unit
Total weight			0,4		g

Modifications in the sense of technical progress are reserved

Designed at: 24.04.09 Designed by: THAUKE

Approval at: 27.04.09 Approval by: JHEYDER

Last Change at: 18.10.17 Last Change by: THAUKE

Approval at: 20.10.17 Approval by: MREIZNER

Rev. No.: 8