



Chipsmall Limited consists of a professional team with an average of over 10 year of expertise in the distribution of electronic components. Based in Hongkong, we have already established firm and mutual-benefit business relationships with customers from,Europe,America and south Asia,supplying obsolete and hard-to-find components to meet their specific needs.

With the principle of “Quality Parts,Customers Priority,Honest Operation,and Considerate Service”,our business mainly focus on the distribution of electronic components. Line cards we deal with include Microchip,ALPS,ROHM,Xilinx,Pulse,ON,Everlight and Freescale. Main products comprise IC,Modules,Potentiometer,IC Socket,Relay,Connector.Our parts cover such applications as commercial,industrial, and automotives areas.

We are looking forward to setting up business relationship with you and hope to provide you with the best service and solution. Let us make a better world for our industry!



Contact us

Tel: +86-755-8981 8866 Fax: +86-755-8427 6832

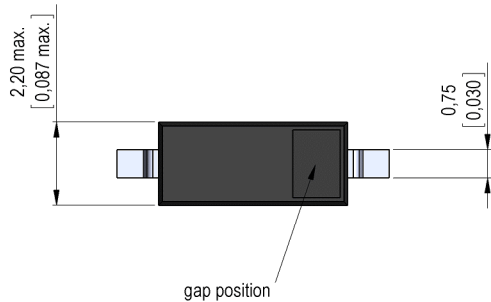
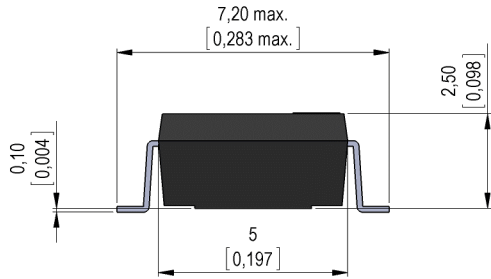
Email & Skype: info@chipsmall.com Web: www.chipsmall.com

Address: A1208, Overseas Decoration Building, #122 Zhenhua RD., Futian, Shenzhen, China



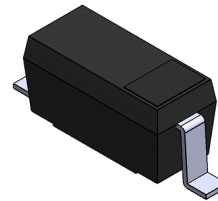
Dimensions mm[inch]

tolerances according to DIN ISO 2768-m
 Toleranzen gem. DIN ISO 2768-m

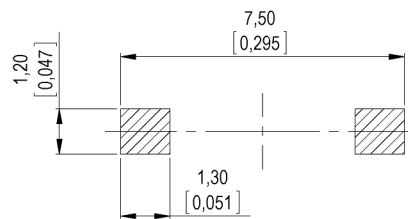


Isometric

Scale 5:1
 Maßstab 5:1

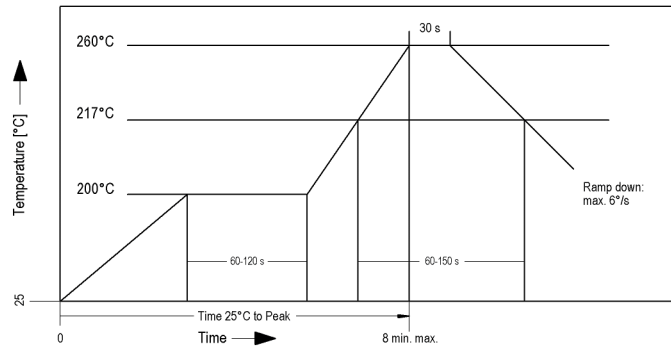


Recommended PCB Pad Layout



Solder Reflow Profile

reflow soldering conditions according to JEDEC norm J-STD 020D.1



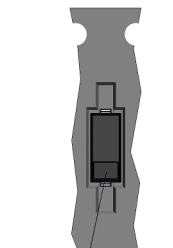
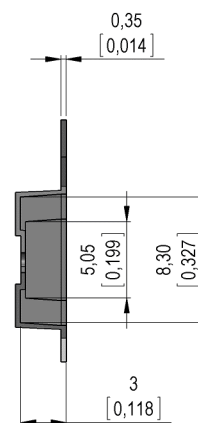
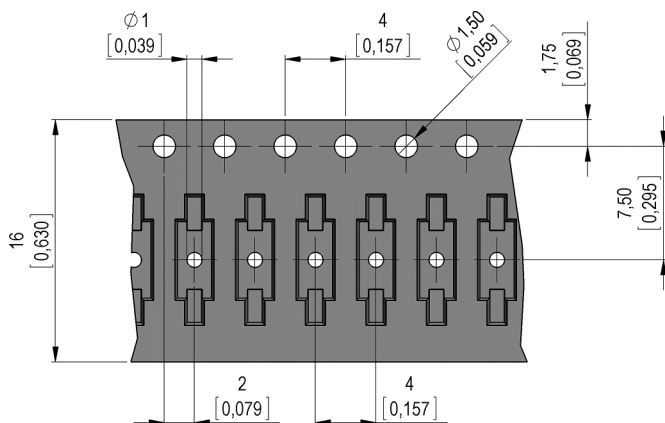
Notes:

Min. distance magnet to sensor: 1,0mm
 Mindestabstand Magnet zu Sensor: 1,0mm

In case of direct contact with the magnet, the sensor can change his sensitivity!
 Direkte Berührung mit dem Betätigungsmagnet kann die Empfindlichkeit verändern!

The north-pole of the magnet is on the side of the gap position.
 Der Nordpol des Magneten ist der Seite der Spaltposition.

Packaging



Gap position opposite to the sprocket holes.



Europe: +49 / 7731 8399 0

| Email: info@standexmeder.com

Item No.:

USA: +1 / 508 295 0771

| Email: salesusa@standexmeder.com

9240100021

Asia: +852 / 2955 1682

| Email: salesasia@standexmeder.com

Item:

MK24-B-2-OE

Magnetic properties	Conditions	Min	Typ	Max	Unit
Pull-In	at 20°C	20		40	AT
Drop out	at 20°C	10		35	AT
Test equipment		KMS-11 + AP74			
Pull-In in milliTesla (modified conta	MS150 - phys. caused tolerance +/- 0,1mT	1,4		3,3	mT
Test equipment		MS-150			

Contact data 04	Conditions	Min	Typ	Max	Unit
Contact - No.		04			
Contact-form		B - NC			
		Ruthenium			
Contact rating (> 9 AT)	Any DC combination of V & A not to exceed their individual max.'s			3	W
Switching voltage	DC or Peak AC			30	V
Switching current (> 9 AT)	DC or Peak AC			0,3	A
Carry current (> 9 AT)	DC or Peak AC			0,5	A
Contact resistance static (>9AT)	Measured with 40% overdrive Start value			200	mOhm
Insulation resistance	RH <45 %, 100 V test voltage	10			GOhm
Breakdown voltage (> 9 AT)	according to IEC 255-5	100			VDC

Special Product Data	Conditions	Min	Typ	Max	Unit
Housing material		mineral-filled epoxy			

Environmental data	Conditions	Min	Typ	Max	Unit
Shock	1/2 sine wave duration 11ms			30	g
Vibration	from 10 - 2000 Hz			20	g
Remark		Pick & place force should not exceed 25cN!			
Operating temperature		-40		115	°C
Storage temperature		-50		115	°C
Washability		fully sealed			
Remark		no direct touch between sensor and strong magnets!			

General data	Conditions	Min	Typ	Max	Unit
Packaging		T&R per 500 pcs.			

Modifications in the sense of technical progress are reserved

Designed at: 15.03.10 Designed by: THAUKE

Approval at: 27.01.11 Approval by: DKUECHLER

Last Change at: 03.05.17 Last Change by: WKOVACS

Approval at: 04.05.17 Approval by: MREIZNER

Rev. No.: 07