



Chipsmall Limited consists of a professional team with an average of over 10 year of expertise in the distribution of electronic components. Based in Hongkong, we have already established firm and mutual-benefit business relationships with customers from,Europe,America and south Asia,supplying obsolete and hard-to-find components to meet their specific needs.

With the principle of “Quality Parts,Customers Priority,Honest Operation,and Considerate Service”,our business mainly focus on the distribution of electronic components. Line cards we deal with include Microchip,ALPS,ROHM,Xilinx,Pulse,ON,Everlight and Freescale. Main products comprise IC,Modules,Potentiometer,IC Socket,Relay,Connector.Our parts cover such applications as commercial,industrial, and automotives areas.

We are looking forward to setting up business relationship with you and hope to provide you with the best service and solution. Let us make a better world for our industry!



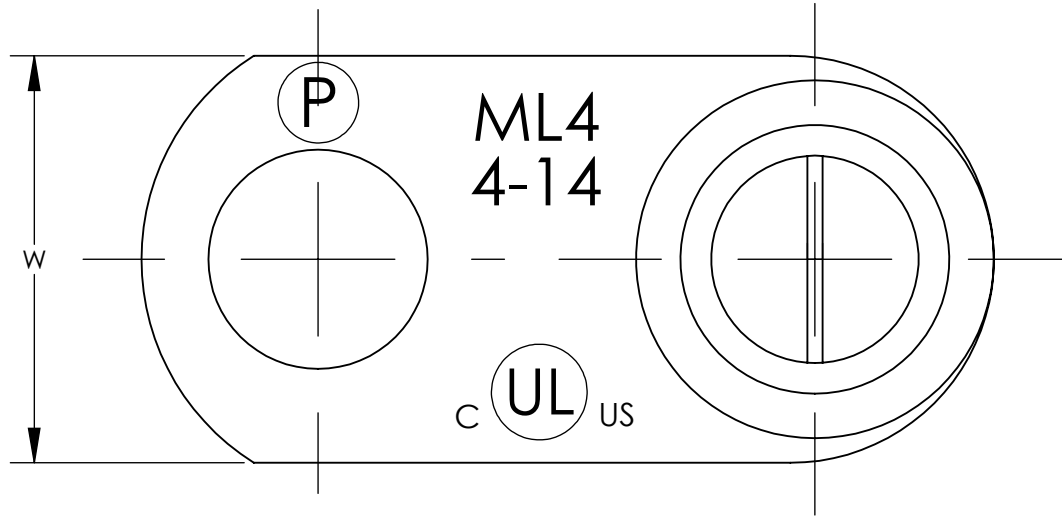
## Contact us

Tel: +86-755-8981 8866 Fax: +86-755-8427 6832

Email & Skype: info@chipsmall.com Web: www.chipsmall.com

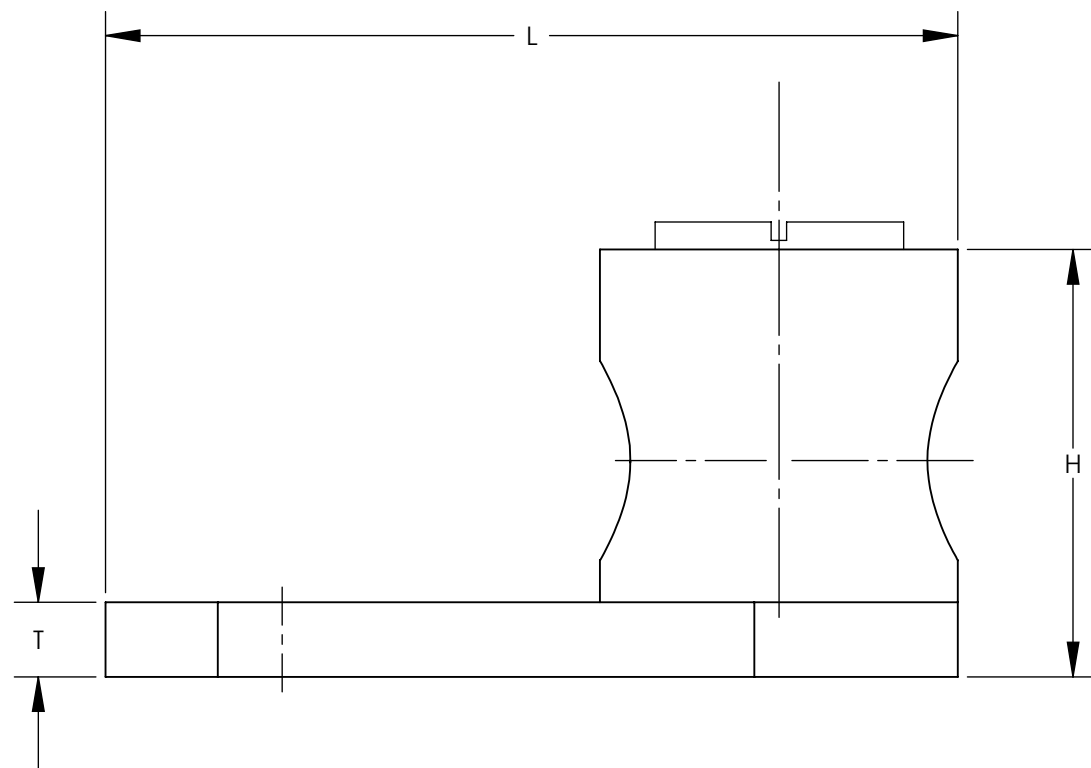
Address: A1208, Overseas Decoration Building, #122 Zhenhua RD., Futian, Shenzhen, China





NOTES:

1. PARTS ARE (c UL us) LISTED.
2. FOR COPPER WIRE ONLY
3. PANDUIT PART NUMBERS WITH A "T" ARE TIN PLATED
4. PKG QTY: Q = 25  
L = 50  
C = 100  
D = 500
5. SEE LABEL FOR SCREW TURQUE VALUES



PANDUIT PART NUMBER	CONDUCTOR RANGE	APPROXIMATE DIMENSIONS +/- .02					INSTALLATION TOOL
		BOLT SIZE	W	H	T	L	
ML8-CY	14 SOL. - 8 STR.	3/16	0.38	0.42	0.08	0.81	SLOT SCREWDRIVER
ML8T-CY	14 SOL. - 8 STR.	3/16	0.38	0.42	0.08	0.81	
ML4-CY	14 SOL. - 4 STR.	1/4	0.54	0.55	0.09	1.11	
ML4T-CY	14 SOL. - 4 STR.	1/4	0.54	0.55	0.09	1.11	
ML1/0-LY	14 SOL. - 1/0 STR.	5/16	0.73	0.79	0.09	1.57	1/4" HEX WRENCH
ML1/0T-LY	14 SOL. - 1/0 STR.	5/16	0.73	0.79	0.09	1.57	
ML250-QY	6 STR. - 250kcmil	3/8	0.94	1.06	0.12	1.94	
ML250T-QY	6 STR. - 250kcmil	3/8	0.94	1.06	0.12	1.94	

REV	DATE	BY	CHK	APR	DESCRIPTION	ECN	TITLE	ITEM REVISION NAME	DATASET FILE NAME	MATERIAL	DRAWING NUMBER	SHEET 1 OF 1	SIZE
06	2/13	JHNU	JHNU	RGB	REVISED TITLE BLOCK	N41569BB-C41569	ML SERIES COPPER MECHANICAL LUGS CUSTOMER DRAWING	C41569/06	C41569/06.SLDDRW	SEE NOTES	C41569_11		B
							UNLESS OTHERWISE SPECIFIED, DIMENSIONAL TOLERANCES ARE: IN [mm] .X ± .XXX ± .XX ± ANGLES ±						
							THIRD ANGLE PROJECTION						
							DRAWN BY JHNU	DATE 7/06	CHK JHNU	SCALE NONE			