



Chipsmall Limited consists of a professional team with an average of over 10 year of expertise in the distribution of electronic components. Based in Hongkong, we have already established firm and mutual-benefit business relationships with customers from,Europe,America and south Asia,supplying obsolete and hard-to-find components to meet their specific needs.

With the principle of "Quality Parts,Customers Priority,Honest Operation,and Considerate Service",our business mainly focus on the distribution of electronic components. Line cards we deal with include Microchip,ALPS,ROHM,Xilinx,Pulse,ON,Everlight and Freescale. Main products comprise IC,Modules,Potentiometer,IC Socket,Relay,Connector.Our parts cover such applications as commercial,industrial, and automotives areas.

We are looking forward to setting up business relationship with you and hope to provide you with the best service and solution. Let us make a better world for our industry!



Contact us

Tel: +86-755-8981 8866 Fax: +86-755-8427 6832

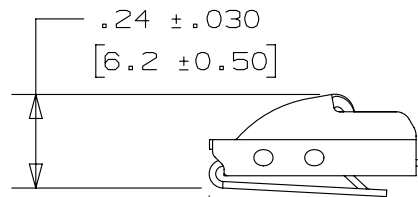
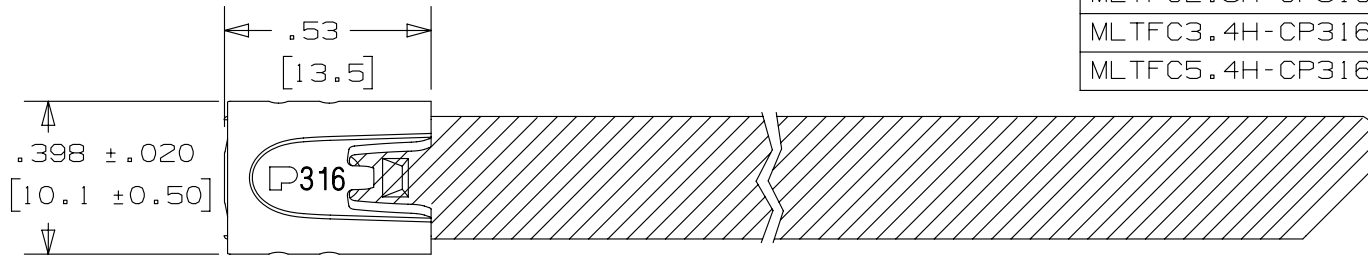
Email & Skype: info@chipsmall.com Web: www.chipsmall.com

Address: A1208, Overseas Decoration Building, #122 Zhenhua RD., Futian, Shenzhen, China



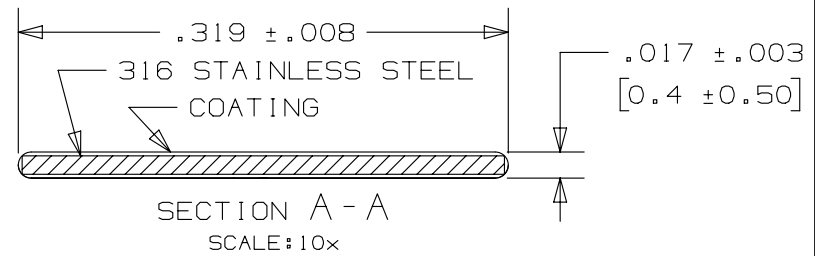
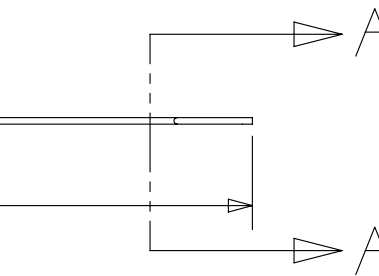
THIS COPY IS PROVIDED ON A RESTRICTED BASIS AND IS NOT TO BE USED IN ANY WAY DETRIMENTAL TO THE INTERESTS OF PANDUIT CORP.

PANDUIT PART NO.	PACKAGE QTY.	MAX BUNDLE DIA	"LENGTH" ±.3 [7]
MLTFC1.5H-CP316	100	1.5" [38]	6.0" [152]
MLTFC2.5H-CP316	100	2.5" [64]	9.0" [229]
MLTFC3.4H-CP316	100	3.4" [86]	12.0" [305]
MLTFC5.4H-CP316	100	5.4" [137]	18.0" [457]



NOTES:

1. APPLICATION TOOLS - GS4MT, PPTMT, ST2MT, HTMT OR ST3MT
2. MINIMUM LOOP TENSILE STRENGTH - 250 LBS. (1112 NEWTONS) WHEN TESTED ON A 1.5" MANDREL.
3. BRACKETS [] DENOTES DIMENSION IN MILLIMETERS, AND ARE FOR REFERENCE ONLY
4. TOLERANCES:
 .XXX = ±.010 [.25]
 .XX = ±.02 [.5]
 .X = ±.03 [.8]
 ANGLES = ±2°
5. MATERIAL: 316 STAINLESS STEEL
6. COATING - POLYESTER
 COATING THICKNESS: .002 MIN./ .005 MAX. PER SIDE



REV	DATE	BY	CHK	APR	DESCRIPTION	ECN
01A	4/13	JAMB	MIM	RGRO	UPDATE DRAWING TO NEW GLOBAL PANDUIT TITLE BLOCK WITH PANDUIT LOGO. ADDED TO NOTE #3: "AND ARE FOR REFERENCE ONLY"	SSECN01051
00A	1/06	JMMR	SKB	---	DRAWING RELEASED	SS00143

TITLE METAL LOCKING TIE - COATED HEAVY SERIES		CUSTOMER DRAWING	
ITEM REVISION NAME N41223BS/01		PANDUIT	
DATASET FILE NAME N41223BS/01			
UNLESS OTHERWISE SPECIFIED, DIMENSIONAL TOLERANCES ARE: IN [mm]		MATERIAL: 316 STAINLESS STEEL	
.x ± .1 [2.54] .xxx ± .005 [.127] .xx ± .01 [.25] ANGLES ± 5 °		DRAWING NUMBER: N41223BS_DC	
THIRD ANGLE PROJECTION		SHT 1 OF 1	
DRAWN BY JMMR	DATE 1/06	CHK SKB	SCALE 2:1
		SIZE A	