



Chipsmall Limited consists of a professional team with an average of over 10 year of expertise in the distribution of electronic components. Based in Hongkong, we have already established firm and mutual-benefit business relationships with customers from,Europe,America and south Asia,supplying obsolete and hard-to-find components to meet their specific needs.

With the principle of "Quality Parts,Customers Priority,Honest Operation,and Considerate Service",our business mainly focus on the distribution of electronic components. Line cards we deal with include Microchip,ALPS,ROHM,Xilinx,Pulse,ON,Everlight and Freescale. Main products comprise IC,Modules,Potentiometer,IC Socket,Relay,Connector.Our parts cover such applications as commercial,industrial, and automotives areas.

We are looking forward to setting up business relationship with you and hope to provide you with the best service and solution. Let us make a better world for our industry!



Contact us

Tel: +86-755-8981 8866 Fax: +86-755-8427 6832

Email & Skype: info@chipsmall.com Web: www.chipsmall.com

Address: A1208, Overseas Decoration Building, #122 Zhenhua RD., Futian, Shenzhen, China



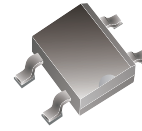
MMB1G-HF Thru. MMB10G-HF

Reverse Voltage: 100 to 1000 Volts

Forward Current: 0.5 Amp

RoHS Device

Halogen Free

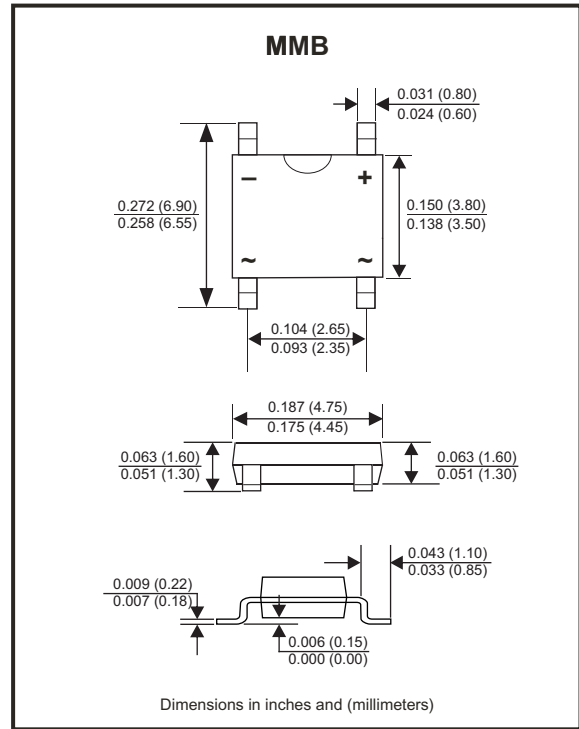


Features

- Glass passivated chip junctions.
- High surge overload rating: 30A peak.
- Saves space on printed circuit boards.
- High temperature soldering guaranteed:
260°C/10 seconds at 5 lbs. (2.3kg) tension
- UL recognized file # E464656 Range: MMB6G thru. MMB10G

Mechanical data

- Case: Molded plastic body over passivated junctions.
- Terminals: Plated leads solderable per MIL-STD-750, Method 2026.
- Polarity: Polarity symbols marked on body.



Maximum Rating And Electrical Characteristics

Rating at TA=25°C, unless otherwise noted.
Single phase, half wave, 60Hz, resistive or inductive load.
For capacitive load, derate current by 20%.

Parameter	Symbol	MMB 1G-HF	MMB 2G-HF	MMB 4G-HF	MMB 6G-HF	MMB 8G-HF	MMB 10G-HF	Unit
Maximum Peak Repetitive Reverse Voltage	V _{RRM}	100	200	400	600	800	1000	V
Maximum RMS Reverse Voltage	V _{RMS}	70	140	280	420	560	700	V
Maximum DC Blocking Voltage	V _{DC}	100	200	400	600	800	1000	V
Maximum Average Forward Output Current @TA=25°C	I _{F(AV)}	0.5 ¹⁾						A
		0.8 ²⁾						
Peak Forward Surge Current, 8.3ms Single Half Sine-wave, Superimposed On Rated Load	I _{FSM}	30						A
Maximum Instantaneous Forward Voltage @0.8A	V _F	1.1						V
Maximum Reverse Current @Rated DC Blocking Voltage	@TA=25°C	5.0						µA
	@TA=100°C	0.5						mA
Typical Thermal Resistance per leg	R _{θJA}	85						°C/W
	R _{θJL}	20						
Current squared time t<8.3ms, TA=25°C	I ² t	3.74						A ² s
Typical junction capacitance per leg	C _J	13						pF
Operating Junction and Storage Temperature Range	T _J , T _{STG}	-55 to +150						°C

Note: 1. On glass-epoxy P.C.B.
2. On alumina substrate.

Company reserves the right to improve product design , functions and reliability without notice.

REV: A

Rating and Characteristic Curves (MMB1G-HF Thru. MMB10G-HF)

Fig.1 - Derating Curve For Output Rectified Current

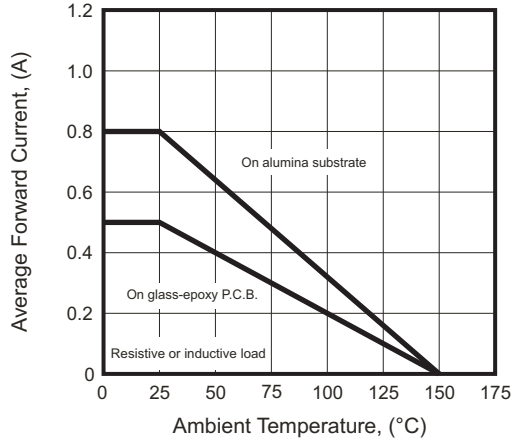


Fig.2 - Maximum Non-repetitive Peak Forward Surge Current Per Leg

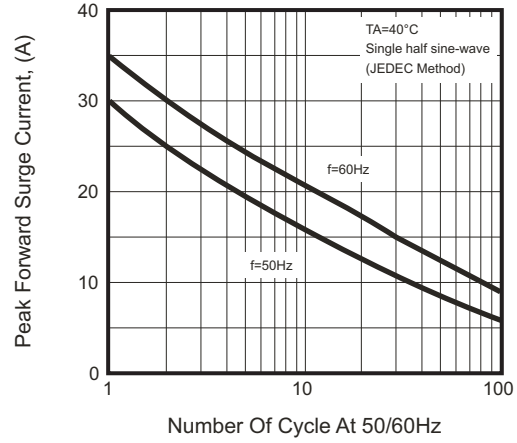


Fig.3 - Typical Forward Voltage Characteristics Per Leg

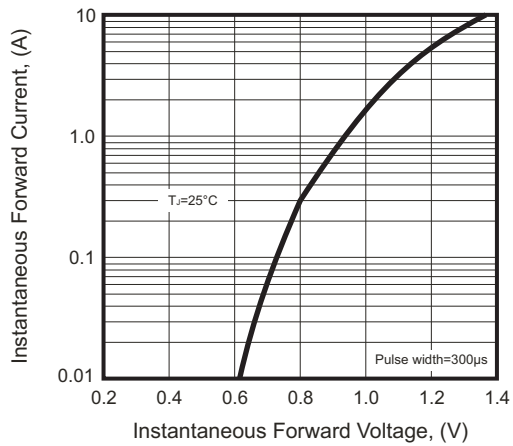


Fig.4 - Typical Reverse Characteristics

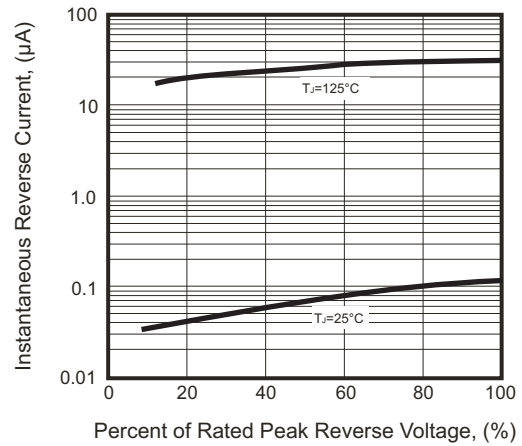
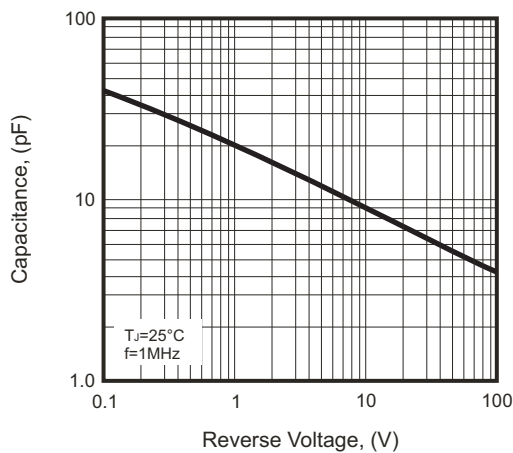
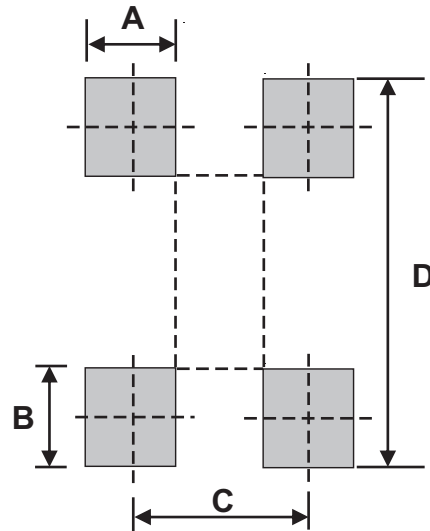


Fig.5 - Typical Junction Capacitance Per Element



Suggested PAD Layout

SIZE	MMB	
	(mm)	(inch)
A	0.70	0.028
B	1.00	0.039
C	2.60	0.102
D	7.01	0.276



Standard Packaging

Case Type	REEL PACK	
	REEL (pcs)	Reel Size (inch)
MMB	5,000	13