



Chipsmall Limited consists of a professional team with an average of over 10 year of expertise in the distribution of electronic components. Based in Hongkong, we have already established firm and mutual-benefit business relationships with customers from,Europe,America and south Asia,supplying obsolete and hard-to-find components to meet their specific needs.

With the principle of “Quality Parts,Customers Priority,Honest Operation,and Considerate Service”,our business mainly focus on the distribution of electronic components. Line cards we deal with include Microchip,ALPS,ROHM,Xilinx,Pulse,ON,Everlight and Freescale. Main products comprise IC,Modules,Potentiometer,IC Socket,Relay,Connector.Our parts cover such applications as commercial,industrial, and automotives areas.

We are looking forward to setting up business relationship with you and hope to provide you with the best service and solution. Let us make a better world for our industry!



Contact us

Tel: +86-755-8981 8866 Fax: +86-755-8427 6832

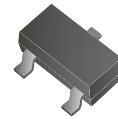
Email & Skype: info@chipsmall.com Web: www.chipsmall.com

Address: A1208, Overseas Decoration Building, #122 Zhenhua RD., Futian, Shenzhen, China



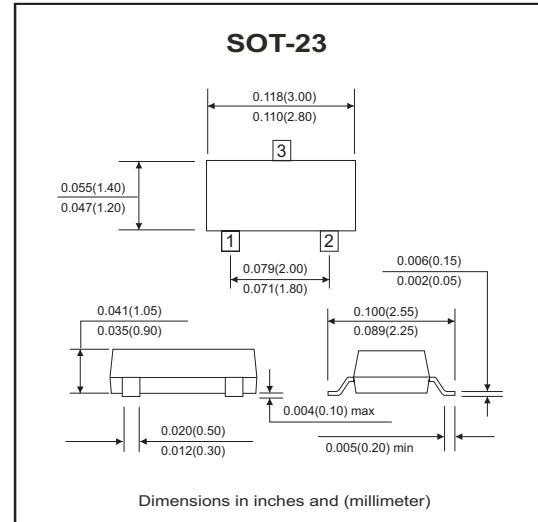
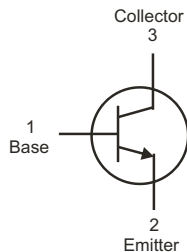
MMBT3904-HF (NPN)

RoHS Device
Halogen Free



Features

- Epitaxial planar die construction
- As complementary type, the PNP transistor MMBT3904-HF is recommended



Maximum Ratings (at TA=25°C unless otherwise noted)

Parameter	Symbol	Min	Typ	Max	Unit
Collector-Base voltage	V_{CBO}			60	V
Collector-Emitter voltage	V_{CEO}			40	V
Emitter-Base voltage	V_{EBO}			6	V
Collector current-Continuous	I_C			0.2	A
Collector dissipation	P_C			0.2	W
Thermal resistance, junction to ambient	$R_{\theta JA}$			625	°C/W
Storage temperature and junction temperature	T_{STG}, T_J	-55		+150	°C

Electrical Characteristics (at TA=25°C unless otherwise noted)

Parameter	Conditions	Symbol	Min	Max	Unit
Collector-Base breakdown voltage	$I_C = 100\mu A, I_E = 0$	$V_{(BR)CBO}$	60		V
Collector-Emitter breakdown voltage	$I_C = 1mA, I_B = 0$	$V_{(BR)CEO}$	40		V
Emitter-Base breakdown voltage	$I_E = 100\mu A, I_C = 0$	$V_{(BR)EBO}$	6		V
Collector cut-off current	$V_{CB} = 60V, I_E = 0$	I_{CBO}		0.1	μA
Collector cut-off current	$V_{CE} = 30V, V_{BE(off)} = 3V$	I_{CEX}		50	nA
Emitter cut-off current	$V_{EB} = 5V, I_C = 0$	I_{EBO}		0.1	μA
DC current gain	$V_{CE} = 1V, I_C = 10mA$	$h_{FE(1)}$	100	400	
	$V_{CE} = 1V, I_C = 50mA$	$h_{FE(2)}$	60		
Collector-Emitter saturation voltage	$I_C = 50mA, I_B = 5mA$	$V_{CE(sat)}$		0.3	V
Base-Emitter saturation voltage	$I_C = 50mA, I_B = 5mA$	$V_{BE(sat)}$		0.95	V
Transition frequency	$V_{CE} = 20V, I_C = 10mA$ $f = 100MHz$	f_T	300		Mhz
Delay time	$V_{CC} = 3.0V, V_{BE} = -0.5V$	t_d		35	nS
Rise time	$I_C = 10mA, I_{B1} = 1.0mA$	t_r		35	nS
Storage time	$V_{CC} = 3.0V, I_C = 10mA$	t_s		200	nS
Fall time	$I_{B1} = I_{B2} = 1.0mA$	t_f		50	nS

RATING AND CHARACTERISTIC CURVES (MMBT3904-HF)

Fig.1 Typical pulsed current gain V.S. Collector current

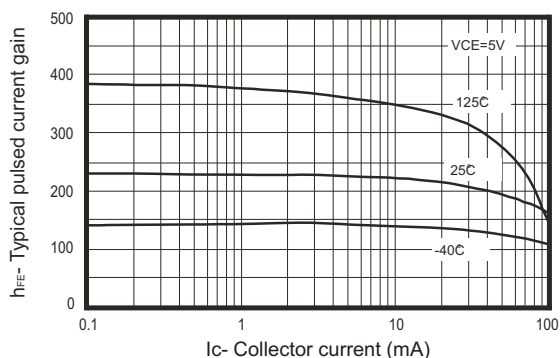


Fig.2 Collector-Emmitter saturation voltage V.S. Collector current

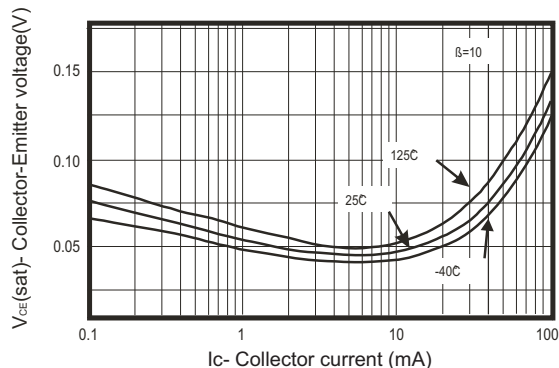


Fig.3 Base-Emmitter saturation voltage V.S. Collector current

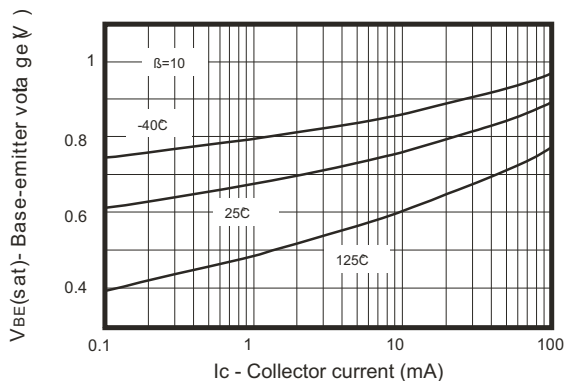


Fig.4 Base-Emmitter ON voltage V.S. Collector current

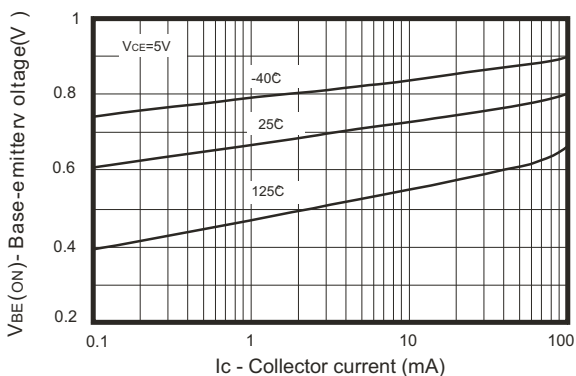


Fig.5 Collector-cutoff current V.S. Ambient temperature

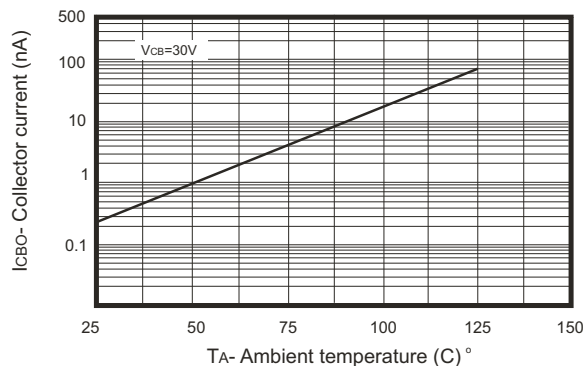
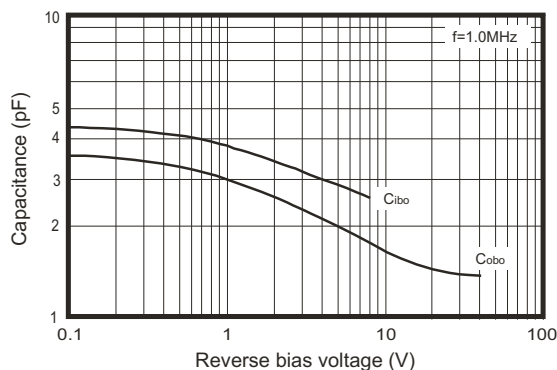
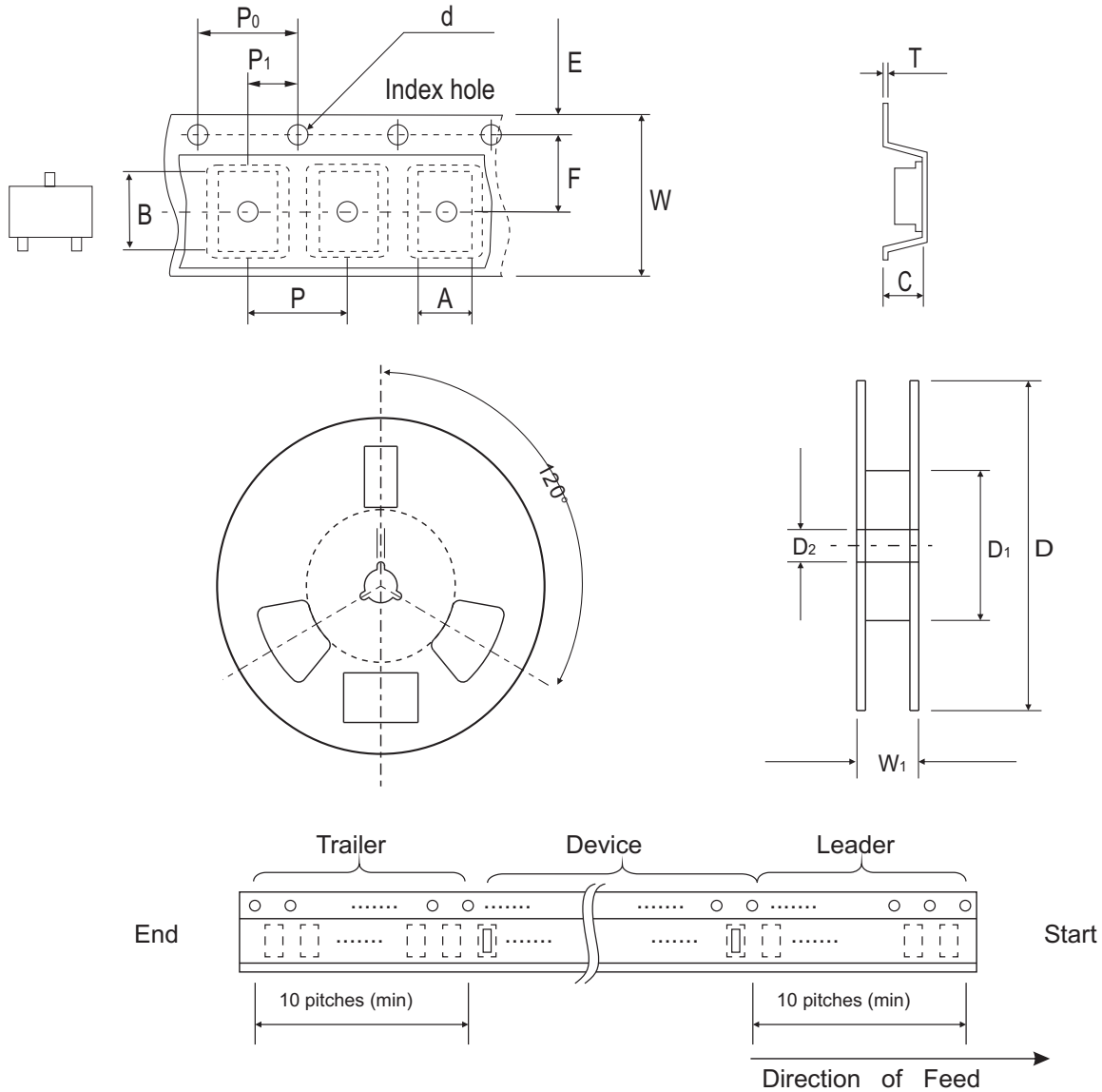


Fig.6 Capacitance V.S. Reverse bias voltage



Reel Taping Specification



SOT-23	SYMBOL	A	B	C	d	D	D ₁	D ₂
	(mm)	3.10 ± 0.10	2.85 ± 0.10	1.40 ± 0.10	1.55 ± 0.10	178 ± 1	50.0 MIN.	13.0 ± 0.20
	(inch)	0.122 ± 0.004	0.112 ± 0.004	0.055 ± 0.004	0.061 ± 0.004	7.008 ± 0.04	1.969 MIN.	0.512 ± 0.008

SOT-23	SYMBOL	E	F	P	P ₀	P ₁	W	W ₁
	(mm)	1.75 ± 0.10	3.50 ± 0.05	4.00 ± 0.10	4.00 ± 0.10	2.00 ± 0.05	8.00 ± 0.30	14.4 MAX.
	(inch)	0.069 ± 0.004	0.138 ± 0.002	0.157 ± 0.004	0.157 ± 0.004	0.079 ± 0.004	0.315 ± 0.008	0.567 MAX.

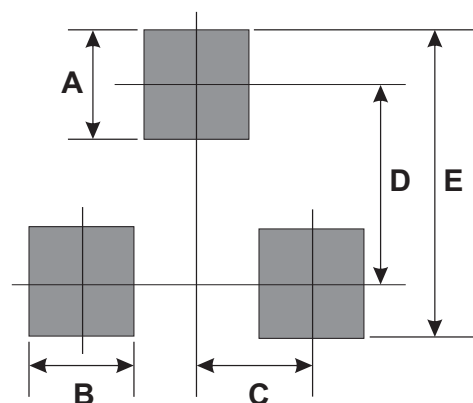
Marking Code

Park Number	Marking Code
MMBT3904-HF	1AM



Suggested PAD Layout

SIZE	SOT-23	
	(mm)	(inch)
A	0.80	0.031
B	0.95	0.037
C	0.95	0.037
D	2.02	0.080
E	3.03	0.120



Standard Packaging

Case Type	Qty per Reel	Reel Size
	(Pcs)	(inch)
SOT-23	3000	7