



Chipsmall Limited consists of a professional team with an average of over 10 year of expertise in the distribution of electronic components. Based in Hongkong, we have already established firm and mutual-benefit business relationships with customers from,Europe,America and south Asia,supplying obsolete and hard-to-find components to meet their specific needs.

With the principle of “Quality Parts,Customers Priority,Honest Operation,and Considerate Service”,our business mainly focus on the distribution of electronic components. Line cards we deal with include Microchip,ALPS,ROHM,Xilinx,Pulse,ON,Everlight and Freescale. Main products comprise IC,Modules,Potentiometer,IC Socket,Relay,Connector.Our parts cover such applications as commercial,industrial, and automotives areas.

We are looking forward to setting up business relationship with you and hope to provide you with the best service and solution. Let us make a better world for our industry!



## Contact us

Tel: +86-755-8981 8866 Fax: +86-755-8427 6832

Email & Skype: [info@chipsmall.com](mailto:info@chipsmall.com) Web: [www.chipsmall.com](http://www.chipsmall.com)

Address: A1208, Overseas Decoration Building, #122 Zhenhua RD., Futian, Shenzhen, China



# Customer Information Sheet

DRAWING No.: MMCX-3005

SHEET 2 OF 2

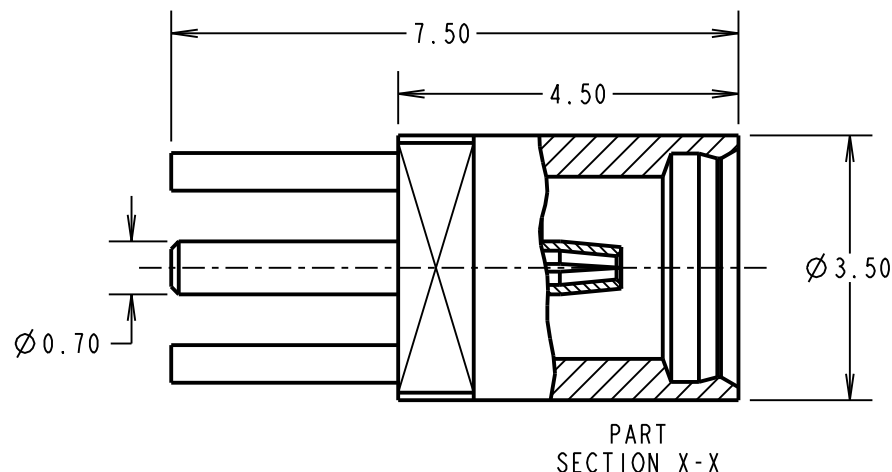
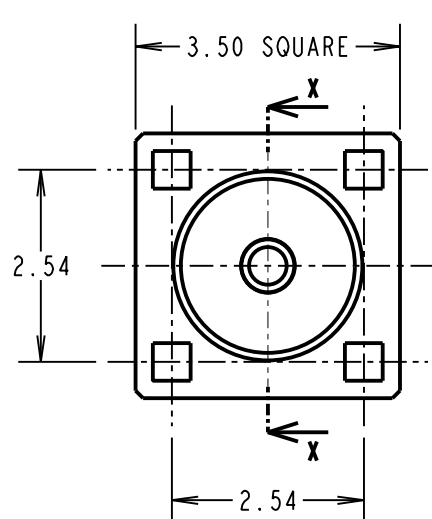
IF IN DOUBT - ASK

(C)

NOT TO SCALE

THIRD ANGLE PROJECTION

ALL DIMENSIONS IN mm

**SPECIFICATIONS:****MATERIALS:**

BODY = BRASS

CENTRE CONTACT = BERYLLIUM COPPER

INSULATOR = PTFE

**FINISH:**

BODY = 0.075µ MIN GOLD

CENTRE CONTACT = 0.75µ MIN GOLD

**ELECTRICAL:**

FREQUENCY RANGE = 0 TO 6 GHz

NORMAL IMPEDANCE = 50 OHMS

V.S.W.R. = 1.22 MAX

INSERTION LOSS = 0.2 dB MAX AT 1GHz

OPERATING VOLTAGE = 250V AC MAX

DIELECTRIC STRENGTH = 500V AC MAX

CONTACT RESISTANCE (BODY) = 2.5 mΩ MAX

CONTACT RESISTANCE (CENTRE CONTACT) = 5.0 mΩ MAX

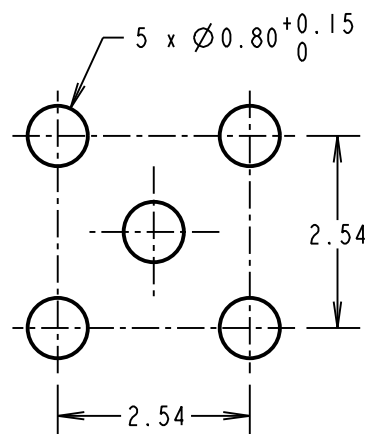
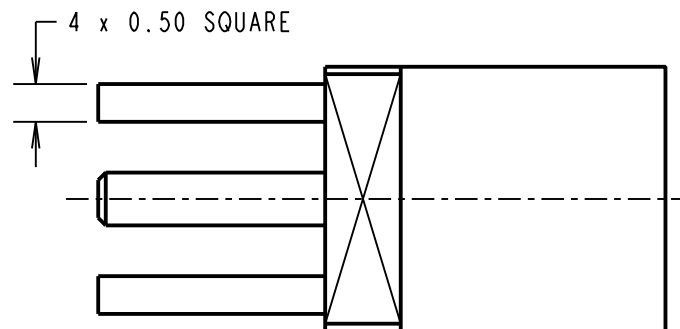
INSULATION RESISTANCE = 1,000 MΩ MIN

**ENVIRONMENTAL:**

TEMPERATURE RANGE = -55°C TO +155°C

**MECHANICAL:**

DURABILITY = 500 CYCLES

RECOMMENDED  
PCB LAYOUT**NOTES:**

- FOR COMPLETE SPECIFICATION AND INTERFACE DIMENSIONS, SEE COMPONENT SPECIFICATION C036XX (LATEST ISSUE).

**ORDER CODE:**  
**MMCX-3005**  
**FINISH** \_\_\_\_\_  
05 - GOLD

SB	2	17.09.12	11801
NAME	ISS.	DATE	C/NOTE
APPROVED:		S.BENNETT	
CHECKED:		M.PLESTED	
DRAWN:		W. J. BOURNE	
CUSTOMER REF.:			
ASSEMBLY DRG:			

**HARWIN**www.harwin.com  
technical@harwin.comTHIS DRAWING AND ANY  
INFORMATION OR DESCRIPTIVE  
MATTER SET OUT HEREON ARE  
CONFIDENTIAL AND COPYRIGHT  
PROPERTY OF THE HARWIN  
GROUP AND MUST NOT BE  
DISCLOSED, LOANED, COPIED  
OR USED FOR MANUFACTURING,  
TENDERING OR FOR ANY  
OTHER PURPOSE WITHOUT  
THEIR WRITTEN PERMISSION.**TOLERANCES**X. = ±1mm  
X.X = ±0.25mm  
X.XX = ±0.10mm  
X.XXX = ±0.01mm

ANGLES = ±5°

UNLESS STATED

**MATERIAL:**

SEE ABOVE

**FINISH:**

SEE ABOVE

**S/AREA:**mm<sup>2</sup>**TITLE:**VERTICAL PC TAIL JACK  
SOCKET MMCX COAX CONNECTOR**DRAWING NUMBER:****MMCX-3005**SHT  
2  
OF  
2