



Chipsmall Limited consists of a professional team with an average of over 10 year of expertise in the distribution of electronic components. Based in Hongkong, we have already established firm and mutual-benefit business relationships with customers from,Europe,America and south Asia,supplying obsolete and hard-to-find components to meet their specific needs.

With the principle of “Quality Parts,Customers Priority,Honest Operation,and Considerate Service”,our business mainly focus on the distribution of electronic components. Line cards we deal with include Microchip,ALPS,ROHM,Xilinx,Pulse,ON,Everlight and Freescale. Main products comprise IC,Modules,Potentiometer,IC Socket,Relay,Connector.Our parts cover such applications as commercial,industrial, and automotives areas.

We are looking forward to setting up business relationship with you and hope to provide you with the best service and solution. Let us make a better world for our industry!



## Contact us

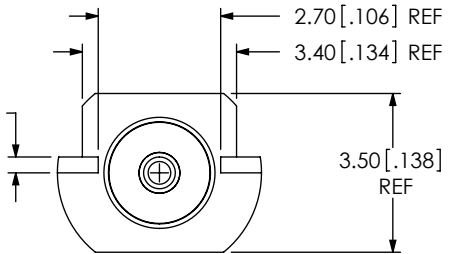
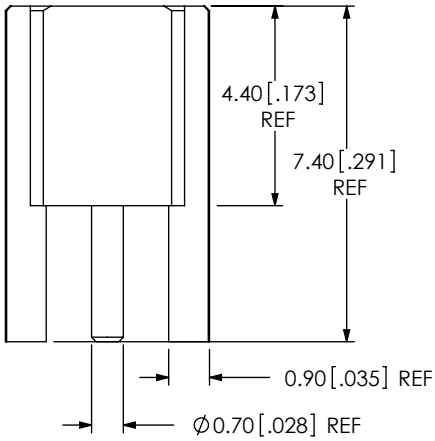
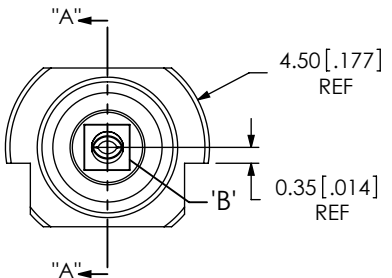
Tel: +86-755-8981 8866 Fax: +86-755-8427 6832

Email & Skype: info@chipsmall.com Web: www.chipsmall.com

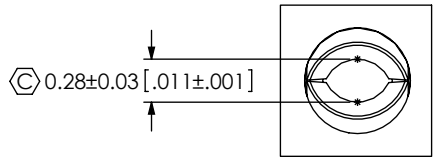
Address: A1208, Overseas Decoration Building, #122 Zhenhua RD., Futian, Shenzhen, China



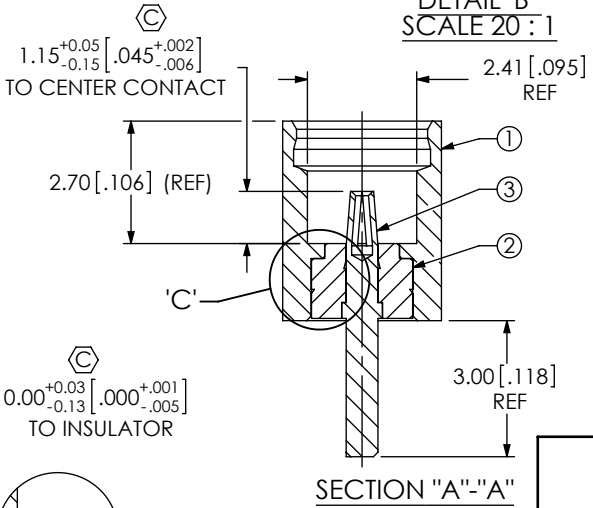
DO NOT SCALE FROM THIS PRINT



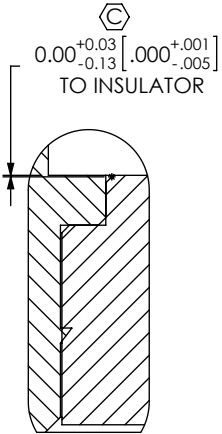
DESIGNED & DIMENSIONED IN MILLIMETERS [INCHES]



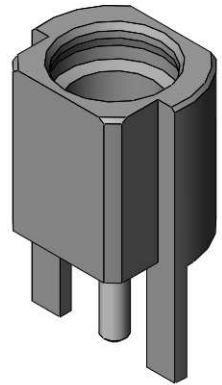
DETAIL 'B' SCALE 20:1



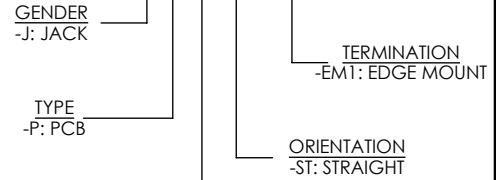
SECTION "A"-A"



DETAIL 'C' SCALE 20:1

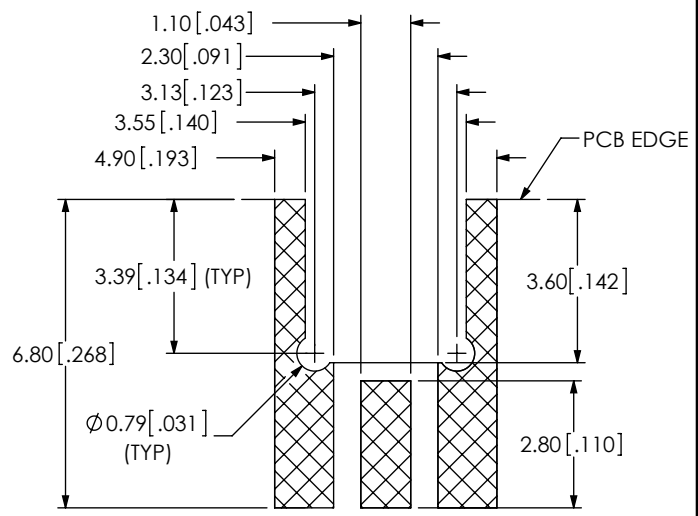


MMCX-J-P-X-ST-EM1



PLATING SPECIFICATION  
-H: 30µ" GOLD CENTER CONTACT,  
3µ" GOLD OUTER CONTACT  
-(SEE TABLE 1)

RECOMMENDED PCB LAYOUT



| ITEM | COMPONENT | -H                    |
|------|-----------|-----------------------|
| 1    | SHELL     | MMCX-J-P-F-ST-EM1-SHL |
| 2    | INSULATOR | MMCX-INS-008          |
| 3    | SOCKET    | MMCX-SKT-001-H        |

- NOTES:
- ⊗ REPRESENTS A CRITICAL DIMENSION.
  - PUSHOUT FORCE FOR INSULATOR: 22.24 N [5 LB] MIN.
  - PUSHOUT FORCE FOR CENTER CONTACT: 11.12 N [2.5 LB] MIN.
  - PRODUCT TO BE PACKAGED PER PACKING STANDARD CO-HD-WI-3040-M.  
TRAY: TY-SMA001-1  
COVER: TY-SMA001-2  
100 PARTS PER TRAY (1 PART PER POCKET)
  - NOTE DELETED.

F:\DWG\MISC\WKTG\MMCX-J-P-X-ST-EM1-MKT.SLDDRW

UNLESS OTHERWISE SPECIFIED, DIMENSIONS ARE IN MILLIMETERS [INCHES]. TOLERANCES ARE:  
DECIMALS ANGLES  
.X: ±0.3 [.01] 5°  
.XX: ±0.13 [.005]  
.XXX: ±0.051 [.0020]

PROPRIETARY NOTE  
THIS DOCUMENT CONTAINS INFORMATION CONFIDENTIAL AND PROPRIETARY TO SAMTEC, INC. AND SHALL NOT BE REPRODUCED OR TRANSFERRED TO OTHER DOCUMENTS OR DISCLOSED TO OTHERS OR USED FOR ANY PURPOSE OTHER THAN THAT WHICH IT WAS OBTAINED WITHOUT THE EXPRESSED WRITTEN CONSENT OF SAMTEC, INC.



520 PARK EAST BLVD, NEW ALBANY, IN 47150  
PHONE: 812-944-6733 FAX: 812-948-5047  
e-Mail: info@SAMTEC.com code: 55322

MATERIAL: DO NOT SCALE DRAWING SHEET SCALE: 6:1  
SHELL: BRASS C36048  
INSULATOR: PTFE(WHITE)  
SOCKET: BeCu C17300

DESCRIPTION:  
MMCX STRAIGHT, EDGE MOUNT JACK- 50 OHM  
DWG. NO.  
**MMCX-J-P-X-ST-EM1**  
BY:R MUSSER 11/30/2007 SHEET 1 OF 1