



Chipsmall Limited consists of a professional team with an average of over 10 year of expertise in the distribution of electronic components. Based in Hongkong, we have already established firm and mutual-benefit business relationships with customers from,Europe,America and south Asia,supplying obsolete and hard-to-find components to meet their specific needs.

With the principle of “Quality Parts,Customers Priority,Honest Operation,and Considerate Service”,our business mainly focus on the distribution of electronic components. Line cards we deal with include Microchip,ALPS,ROHM,Xilinx,Pulse,ON,Everlight and Freescale. Main products comprise IC,Modules,Potentiometer,IC Socket,Relay,Connector.Our parts cover such applications as commercial,industrial, and automotives areas.

We are looking forward to setting up business relationship with you and hope to provide you with the best service and solution. Let us make a better world for our industry!



Contact us

Tel: +86-755-8981 8866 Fax: +86-755-8427 6832

Email & Skype: info@chipsmall.com Web: www.chipsmall.com

Address: A1208, Overseas Decoration Building, #122 Zhenhua RD., Futian, Shenzhen, China



MMC X-J -P-X-ST-SM1-XX

GENDER
-J: JACK

TYPE
-P: PCB

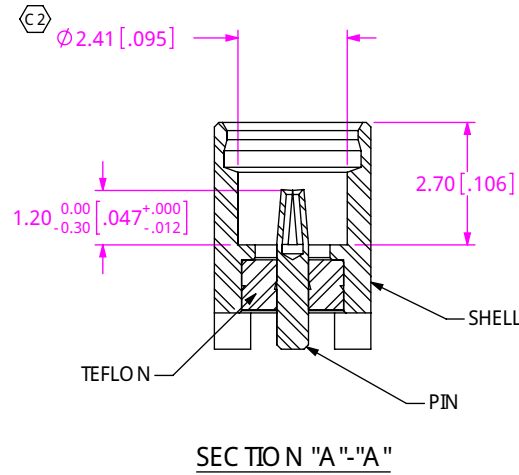
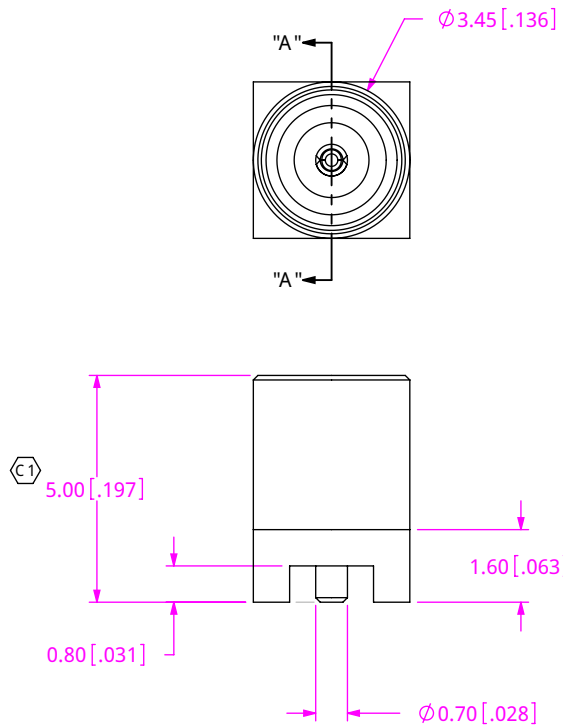
PLATING SPECIFICATION
-H: HEAVY GOLD

OPTION
-TR: TAPE & REEL (SEE SHT 2)
-K: KAPTON PAD (SEE SHT 2)

TERMINATION
-SM1: SURFACE MOUNT

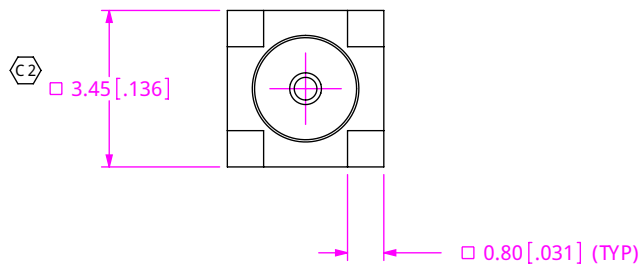
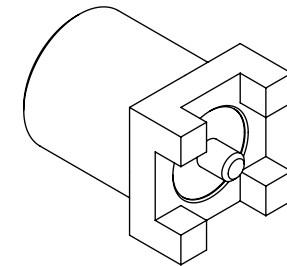
ORIENTATION
-ST: STRAIGHT

DESIGNED & DIMENSIONED
IN MILLIMETERS [INCHES]

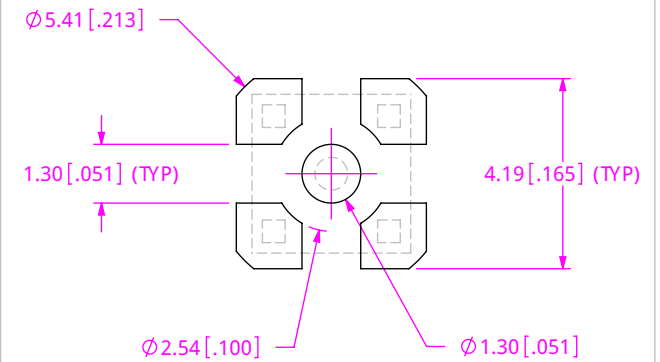


NOTE:

PARTS TO BE PACKAGED IN TRAYS; IF QUANTITY IS LESS THAN HALF OF THE TRAY, PARTS TO BE PACKAGED IN COHESIVE FOAM.



RECOMMENDED PCB LAYOUT



UNLESS OTHERWISE SPECIFIED, DIMENSIONS ARE IN METRIC. TOLERANCES ARE:
DECIMALS ANGLES
.XX: $\pm .10 [0.004]$ 5°
.XXX: $\pm .05 [0.002]$

PROPRIETARY NOTE

THIS DOCUMENT CONTAINS INFORMATION CONFIDENTIAL AND PROPRIETARY TO SAMTEC, INC. AND SHALL NOT BE REPRODUCED OR TRANSFERRED TO OTHER DOCUMENTS OR DISCLOSED TO OTHERS OR USED FOR ANY PURPOSE OTHER THAN THAT WHICH IT WAS OBTAINED WITHOUT THE EXPRESSED WRITTEN CONSENT OF SAMTEC, INC.

MATERIAL: DO NOT SCALE DRAWING SHEET SCALE: 1:0.166667

SHELL: BRASS C3602B
PLATING: .08 [0.000003] GOLD OVER 1.25 [0.000050] NIC KEL
PIN: BeCu C17300
PLATING: .75 [0.000030] GOLD OVER 1.25 [0.000050] NIC KEL
INSULATOR: TEFLON
KAPTON PAD: POLYAMIDE FILM

FILE: DWG\MISC\MKTG\MMCX-J-P-X-ST-SM1-XX-MKTSLDDRW

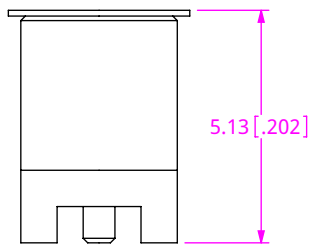
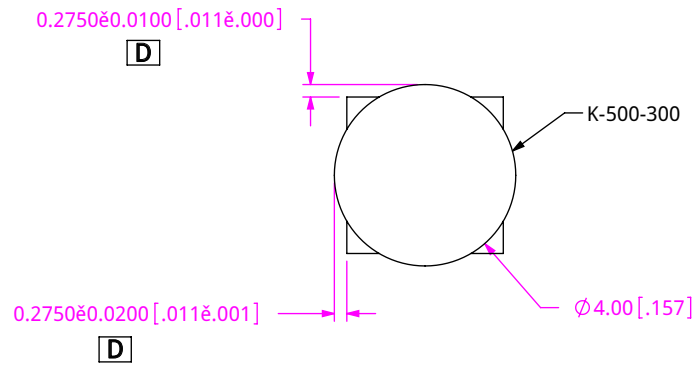


520 PARK EAST BLVD, NEW ALBANY, IN 47150
PHONE: 812-944-6733 FAX: 812-948-5047
e-Mail: info@SAMTEC.com code: 55322

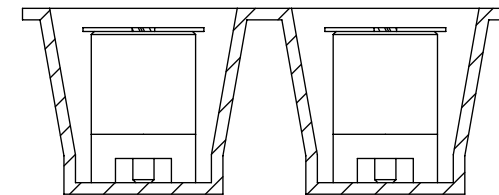
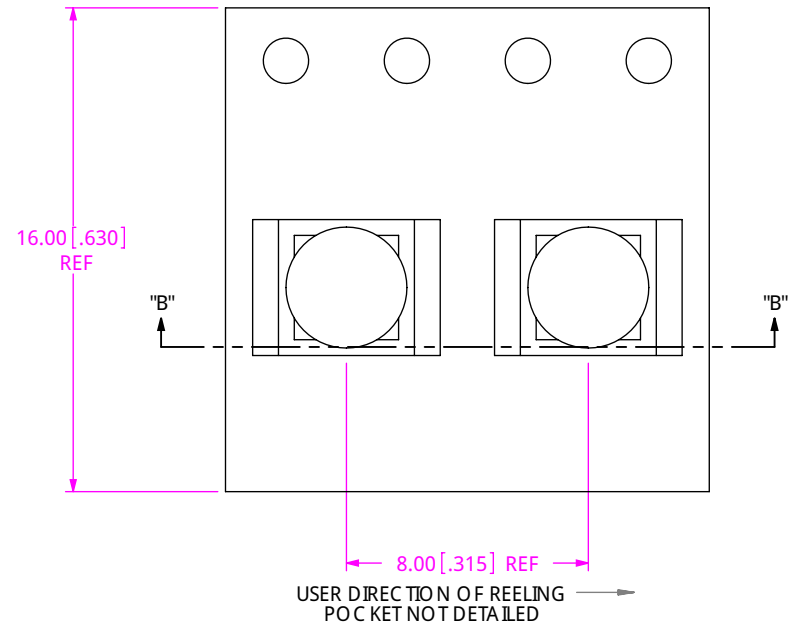
DESCRIPTION: MMCX STRAIGHT SMT JACK - 50 OHM

DWG. NO. MMCX-J -P-X-ST-SM1-XX

BY: D PURVIS 8/12/2004 SHEET 1 OF 2



-K OPTION



SECTION "B"-"B"
SCALE 4 : 1

-TR OPTION **C**

PROPRIETARY NOTE
THIS DOCUMENT CONTAINS INFORMATION
CONFIDENTIAL AND PROPRIETARY TO
SAMTEC, INC. AND SHALL NOT BE REPRODUCED
OR TRANSFERRED TO OTHER DOCUMENTS OR
DISCLOSED TO OTHERS OR USED FOR ANY
PURPOSE OTHER THAN THAT WHICH IT WAS
OBTAINED WITHOUT THE EXPRESSED WRITTEN
CONSENT OF SAMTEC, INC.

DO NOT SCALE DRAWING

SHEET SCALE: 6:1

samtec

520 PARK EAST BLVD, NEW ALBANY, IN 47150
PHONE: 812-944-6733 FAX: 812-948-5047
e-Mail: info@SAMTEC.com code: 55322

DESCRIPTION:
MMC X STRAIGHT SMT JACK-50 OHM

DWG. NO. **MMC X-J -P-X-ST-SM1-XX**

BY: D PURVIS 8/12/2004 SHEET 2 OF 2