



Chipsmall Limited consists of a professional team with an average of over 10 year of expertise in the distribution of electronic components. Based in Hongkong, we have already established firm and mutual-benefit business relationships with customers from,Europe,America and south Asia,supplying obsolete and hard-to-find components to meet their specific needs.

With the principle of “Quality Parts,Customers Priority,Honest Operation,and Considerate Service”,our business mainly focus on the distribution of electronic components. Line cards we deal with include Microchip,ALPS,ROHM,Xilinx,Pulse,ON,Everlight and Freescale. Main products comprise IC,Modules,Potentiometer,IC Socket,Relay,Connector.Our parts cover such applications as commercial,industrial, and automotives areas.

We are looking forward to setting up business relationship with you and hope to provide you with the best service and solution. Let us make a better world for our industry!



## Contact us

Tel: +86-755-8981 8866 Fax: +86-755-8427 6832

Email & Skype: info@chipsmall.com Web: www.chipsmall.com

Address: A1208, Overseas Decoration Building, #122 Zhenhua RD., Futian, Shenzhen, China



DESIGNED & DIMENSIONED  
IN MILLIMETERS [INCHES]

MMCX-P-P-X-ST-MT1

GENDER  
-P: PLUG

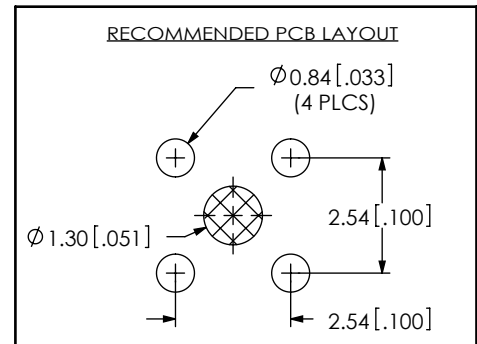
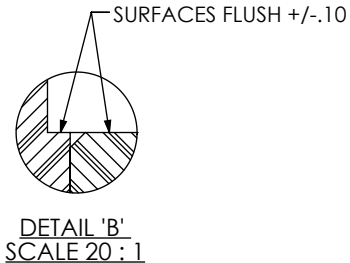
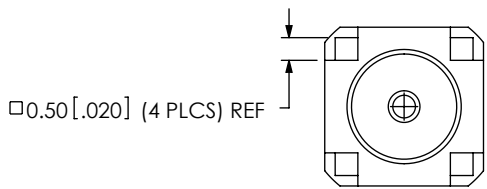
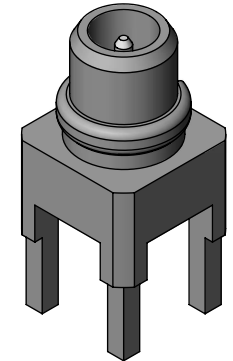
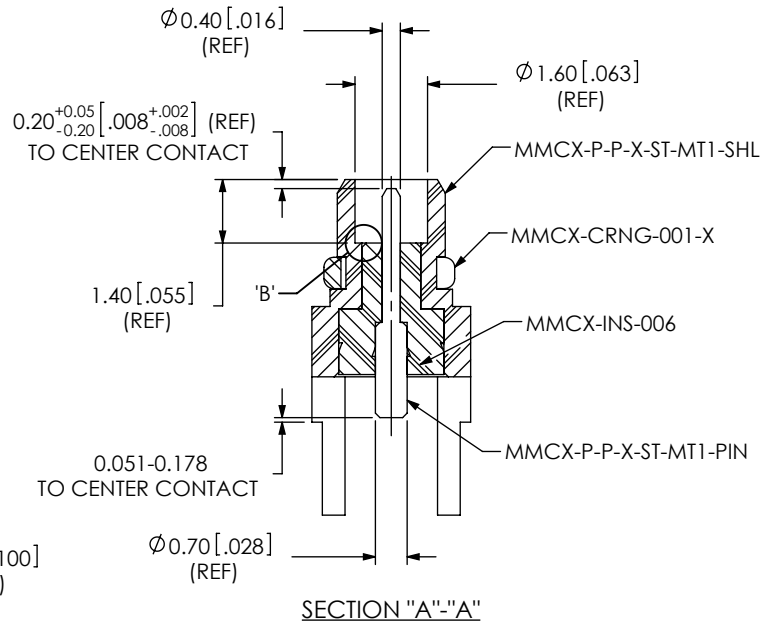
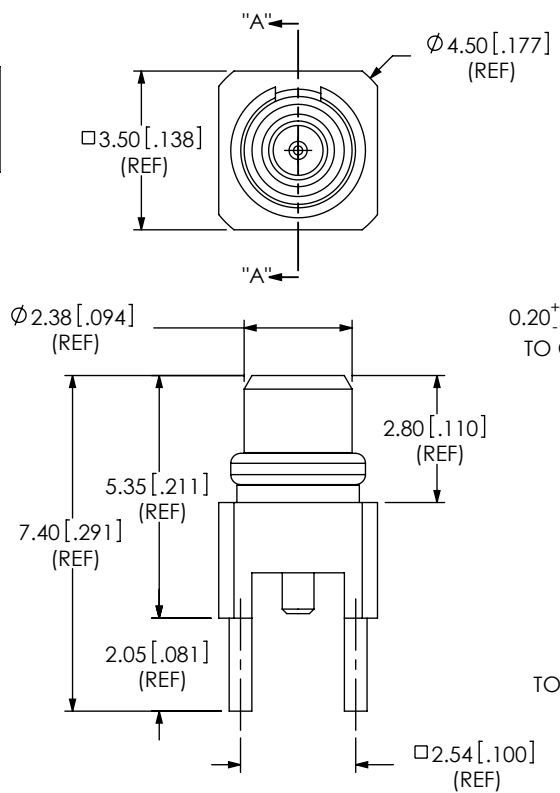
TERMINATION  
-MT1: MIXED TECHNOLOGY

TYPE  
-P: PCB

ORIENTATION  
-ST: STRAIGHT

PLATING SPECIFICATION  
-H: HEAVY GOLD  
(SEE TABLE 1)

DO NOT  
SCALE FROM  
THIS PRINT



- NOTES:
1. REPRESENTS A CRITICAL DIMENSION.
  2. PUSHOUT FORCE FOR INSULATOR: 22.24 N [5 LB] MIN.
  3. PUSHOUT FORCE FOR CENTER CONTACT: 11.12 N [2.5 LB] MIN.
  4. INSERTION AND WITHDRAWAL FORCES PER 2.2.2 OF EN 122340:2002.  
INSERTION = 18 N [4 LB] MAX.  
WITHDRAWAL = 6 N [1.3 LB] MIN. / 18 N [4 LB] MAX.
  5. PARTS TO BE PACKAGED IN TRAYS; IF QUANTITY IS LESS THAN HALF TRAY, PARTS TO BE PACKAGED IN COHESIVE FOAM.
  6. RoHS COMPLIANT.

F:\DWG\MISC\MKTG\MMCX-P-P-X-ST-MT1-MKT.SLDDRW

UNLESS OTHERWISE SPECIFIED, DIMENSIONS ARE IN MILLIMETERS [INCHES]. TOLERANCES ARE:

DECIMALS ANGLES

.X: ±0.3 [0.1] 2°

.XX: ±0.13 [0.05]

.XXX: ±0.051 [0.020]

PROPRIETARY NOTE

THIS DOCUMENT CONTAINS CONFIDENTIAL AND PROPRIETARY INFORMATION AND ALL DESIGN, MANUFACTURING, REPRODUCTION, USE, PATENT RIGHTS AND SALES RIGHTS ARE EXPRESSLY RESERVED BY SAMTEC, INC. THIS DOCUMENT SHALL NOT BE DISCLOSED, IN WHOLE OR PART, TO ANY UNAUTHORIZED PERSON OR ENTITY NOR REPRODUCED, TRANSFERRED OR INCORPORATED IN ANY OTHER PROJECT IN ANY MANNER WITHOUT THE EXPRESS WRITTEN CONSENT OF SAMTEC, INC.

MATERIAL: SEE TABLE 1

DO NOT SCALE DRAWING

SHEET SCALE: 6:1

520 PARK EAST BLVD, NEW ALBANY, IN 47150  
PHONE: 812-944-6733 FAX: 812-948-5047  
e-Mail: info@SAMTEC.com code: 55322

TABLE 1: MATERIAL			
SAMTEC PART NUMBER	ITEM	MATERIAL	PLATING - (REFERENCE)
MMCX-P-P-X-ST-MT1-SHL	SHELL	BRASS C3604B	0.00008[.000003] GOLD OVER .00127[.000050] NICKEL
MMCX-INS-006	INSULATOR	PTFE TEFLON (WHITE)	N/A
MMCX-P-P-X-ST-MT1-PIN	PIN	BRASS C3602B	0.00076[.000030] GOLD OVER .00127[.000050] NICKEL
MMCX-CRNG-001	C-RING	BeCu C17300	0.00008[.000003] GOLD OVER .00127[.000050] NICKEL

DESCRIPTION:  
MMCX STRAIGHT, MIXED TECHNOLOGY PLUG- 50 OHM

DWG. NO.  
**MMCX-P-P-X-ST-MT1**

BY: R MUSSER 12/03/2007 SHEET 1 OF 1