



Chipsmall Limited consists of a professional team with an average of over 10 year of expertise in the distribution of electronic components. Based in Hongkong, we have already established firm and mutual-benefit business relationships with customers from,Europe,America and south Asia,supplying obsolete and hard-to-find components to meet their specific needs.

With the principle of "Quality Parts,Customers Priority,Honest Operation,and Considerate Service",our business mainly focus on the distribution of electronic components. Line cards we deal with include Microchip,ALPS,ROHM,Xilinx,Pulse,ON,Everlight and Freescale. Main products comprise IC,Modules,Potentiometer,IC Socket,Relay,Connector.Our parts cover such applications as commercial,industrial, and automotives areas.

We are looking forward to setting up business relationship with you and hope to provide you with the best service and solution. Let us make a better world for our industry!



## Contact us

Tel: +86-755-8981 8866 Fax: +86-755-8427 6832

Email & Skype: info@chipsmall.com Web: www.chipsmall.com

Address: A1208, Overseas Decoration Building, #122 Zhenhua RD., Futian, Shenzhen, China



DESIGNED & DIMENSIONED  
IN MILLIMETERS [INCHES]

MMCX7-P-C-XX-RA-CA3

TABLE 1			
ITEM	COMPONENT	-HF	-GF
1	SUB ASSEMBLY	SUB-GRF7V-P-C-HF-RA-CA3	SUB-GRF7V-P-C-GF-RA-CA3
2	FERRULE	MCX-FER-001-F	MCX-FER-001-N
3	INSULATOR	MMCX-INS-001	
4	CAP	MMCX-CAP-001-F	MMCX-CAP-001-N

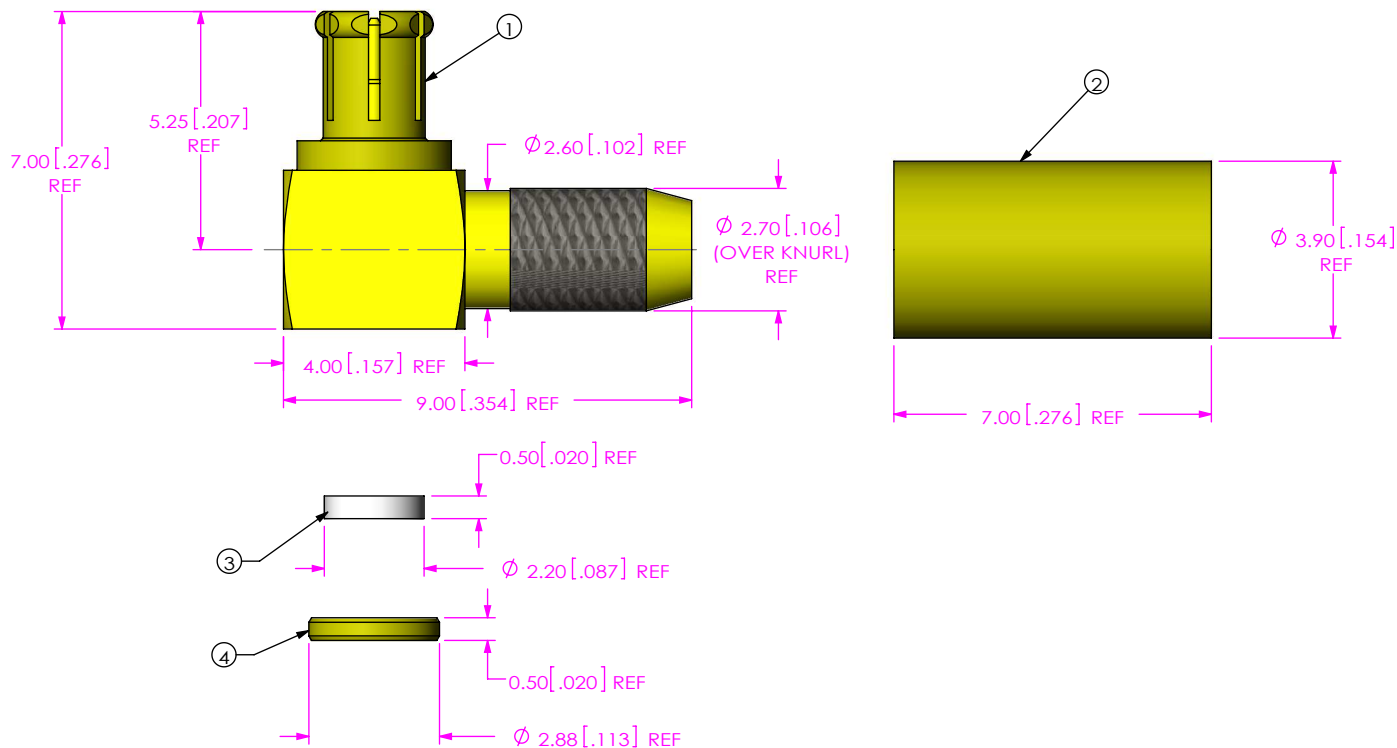
DO NOT  
SCALE FROM  
THIS PRINT

**TERMINATION**  
-CA3: CABLE (RG179)

**ORIENTATION**  
-RA: RIGHT ANGLE

**TYPE**  
-C: CABLE

**PLATING SPECIFICATION**  
-HF: 30µ" GOLD CENTER CONTACT,  
3µ" GOLD OUTER CONTACT  
-GF: 10µ" GOLD CENTER CONTACT,  
3µ" GOLD OUTER CONTACT  
100µ" NICKEL REMAINING PARTS  
(SEE TABLE 1)



NOTES:

- NOTE DELETED.
- PRODUCT TO BE BULK PACKAGED PER PACKAGING STANDARD CO-RF-WI-3040-M.
- NOTE DELETED.

**UNLESS OTHERWISE SPECIFIED, DIMENSIONS ARE IN MILLIMETERS.**

TOLERANCES ARE:

DECIMALS	ANGLES
X.X: ±0.3 [.01]	5°
X.XX: ±0.13 [.005]	
X.XXX: ±0.051 [.0020]	

**PROPRIETARY NOTE**  
THIS DOCUMENT CONTAINS CONFIDENTIAL AND PROPRIETARY INFORMATION AND ALL DESIGN, MANUFACTURING, REPRODUCTION, USE, PATENT RIGHTS AND SALES RIGHTS ARE EXPRESSLY RESERVED BY SAMTEC, INC. THIS DOCUMENT SHALL NOT BE DISCLOSED, IN WHOLE OR PART, TO ANY UNAUTHORIZED PERSON OR ENTITY NOR REPRODUCED, TRANSFERRED OR INCORPORATED IN ANY OTHER PROJECT IN ANY MANNER WITHOUT THE EXPRESS WRITTEN CONSENT OF SAMTEC, INC.



520 PARK EAST BLVD, NEW ALBANY, IN 47150  
PHONE: 812-944-6733 FAX: 812-948-5047  
e-Mail: info@SAMTEC.com code 55322

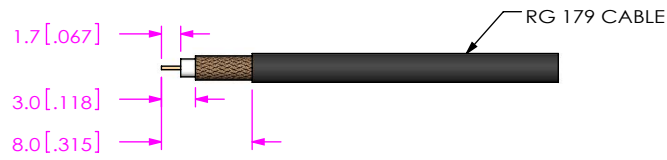
MATERIAL: DO NOT SCALE DRAWING SHEET SCALE: 6:1

SHELL: BeCu  
CABLE BODY, PIN, FERRULE, CAP: BRASS  
INSULATOR: PTFE

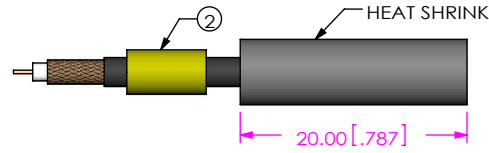
DESCRIPTION:  
TRUE 75 OHM, MMCX RIGHT ANGLE PLUG, RG179

DWG. NO.  
**MMCX7-P-C-XX-RA-CA3**

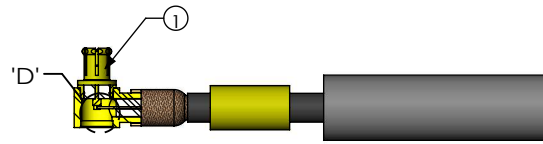
BY: ALVIN W 10/08/2011 SHEET 1 OF 2



IN PROCESS 1  
STRIP CABLE AND TIN INNER CONDUCTOR

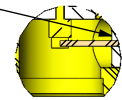


IN-PROCESS 2  
ADD HEAT SHRINK TUBE & FERRULE

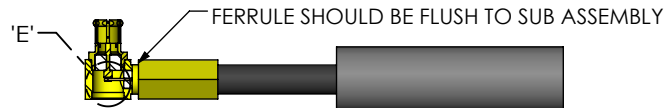


IN-PROCESS 3  
FLARE SHIELD & ADD SUB ASSEMBLY

END OF CABLE DIELECTRIC SHOULD SEAT AGAINST CONTACT CUP

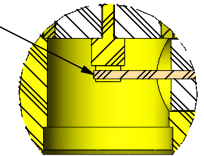


DETAIL 'D'  
SCALE 4 : 1



IN-PROCESS 4  
CRIMP FERRULE  
(USE CRIMP HAND TOOL #CAT-RF-FER-01, AND .128" DIE SIZE)

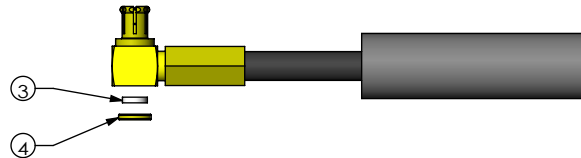
CABLE CENTER CONDUCTOR SHOULD NOT PROTRUDE OUTSIDE CONTACT CUP AFTER FERRULE IS CRIMPED



DETAIL 'E'  
SCALE 6 : 1



IN-PROCESS 5  
SOLDER SIGNAL SOCKET



IN-PROCESS 6  
PRESS INSULATOR AND CAP WITH CHAMFERED EDGE INWARDS



IN PROCESS 7  
ACTIVATE HEAT SHRINK

**PROPRIETARY NOTE**  
THIS DOCUMENT CONTAINS CONFIDENTIAL AND PROPRIETARY INFORMATION AND ALL DESIGN, MANUFACTURING, REPRODUCTION, USE, PATENT RIGHTS AND SALES RIGHTS ARE EXPRESSLY RESERVED BY SAMTEC, INC. THIS DOCUMENT SHALL NOT BE DISCLOSED, IN WHOLE OR PART, TO ANY UNAUTHORIZED PERSON OR ENTITY NOR REPRODUCED, TRANSFERRED OR INCORPORATED IN ANY OTHER PROJECT IN ANY MANNER WITHOUT THE EXPRESS WRITTEN CONSENT OF SAMTEC, INC.

DO NOT SCALE DRAWING

SHEET SCALE: 3:2



520 PARK EAST BLVD, NEW ALBANY, IN 47150  
PHONE: 812-944-6733 FAX: 812-948-5047  
e-Mail info@SAMTEC.com code 55322

DESCRIPTION:  
TRUE 75 OHM, MMCX RIGHT ANGLE PLUG, RG179

DWG. NO.  
**MMCX7-P-C-XX-RA-CA3**

BY: ALVIN W 10/08/2011 SHEET 2 OF 2