



Chipsmall Limited consists of a professional team with an average of over 10 year of expertise in the distribution of electronic components. Based in Hongkong, we have already established firm and mutual-benefit business relationships with customers from,Europe,America and south Asia,supplying obsolete and hard-to-find components to meet their specific needs.

With the principle of “Quality Parts,Customers Priority,Honest Operation,and Considerate Service”,our business mainly focus on the distribution of electronic components. Line cards we deal with include Microchip,ALPS,ROHM,Xilinx,Pulse,ON,Everlight and Freescale. Main products comprise IC,Modules,Potentiometer,IC Socket,Relay,Connector.Our parts cover such applications as commercial,industrial, and automotives areas.

We are looking forward to setting up business relationship with you and hope to provide you with the best service and solution. Let us make a better world for our industry!



## Contact us

Tel: +86-755-8981 8866 Fax: +86-755-8427 6832

Email & Skype: info@chipsmall.com Web: www.chipsmall.com

Address: A1208, Overseas Decoration Building, #122 Zhenhua RD., Futian, Shenzhen, China



## Passive Components: MMI 300 Series

# Spiral Inductors

## Description

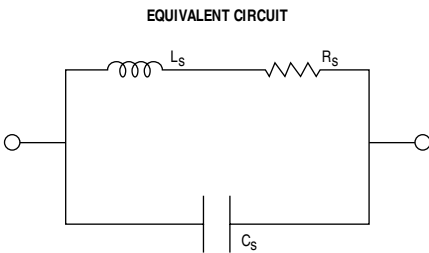
The MicroMetrics MMI 300 series of Spiral Inductors are formed by photolithography and plating techniques on quartz substrates. They eliminate the need for hand forming and "staking" of coil in hybrid circuits.

They provide uniformity, durability and repeatability in circuit fabrication.

The coils are polyimide coated to protect from ambient contaminants, and to eliminate the need for conformal coating. Quartz substrates are rugged and reduce dielectric losses. Chips may be bonded using either conductive or non conductive epoxies, and wire bonded with gold wire or ribbon by thermocompression bonding.

## Applications

The Spiral Inductors are ideally suited for bias injection into oscillators, amplifiers and microwave switches (bias tees). They can also be used to bias tuning varactors, PIN diodes, transistors and monolithic circuits.



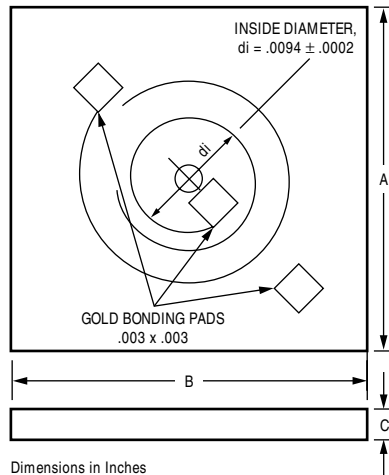
## Features

- No Need for "Staking" Coil
- Passivated Protective Coating Over Coil
- Dimensional Uniformity
- Planar Solid Structure Coil

## Packaging

- Chip

## Chip Outline



### DIMENSIONS: INCHES

| DIM "A"<br>MAX | DIM "B"<br>MAX | DIM "C"<br>MAX | Part<br>Number |
|----------------|----------------|----------------|----------------|
| .040           | .040           | .012           | MMI301         |
| .045           | .045           | .012           | MMI302         |
| .050           | .050           | .012           | MMI303         |
| .065           | .065           | .012           | MMI304         |

## Electrical Characteristics

| # of Turns | Inductance<br>$L_s$ (nH)<br>MIN/TYP/MAX | Series Resistance, $R_s$ |      | Q<br>At $F_t$<br>MIN/MAX | Test<br>Frequency, $F_t$<br>(GHz) | Resonant<br>Frequency, $F_r$<br>(GHz) | Part<br>Number |
|------------|---|--------------------------|------|--------------------------|-----------------------------------|---------------------------------------|----------------|
|            |   | DC                       | 1GHz |                          |                                   |                                       |                |
| 5½         | 12/15/18                                | 2.8                      | 4.5  | 25/30                    | 1.5                               | 6.4                                   | MMI301         |
| 7½         | 24/30/36                                | 4.0                      | 6.0  | 26/30                    | 1.2                               | 5.3                                   | MMI302         |
| 9½         | 42/50/58                                | 6.0                      | 8.5  | 23/27                    | 1.0                               | 4.2                                   | MMI303         |
| 12½        | 67/75/83                                | 8.5                      | 15   | 20/24                    | 1.0                               | 3.0                                   | MMI304         |

Notes:

$L_s$ ,  $R_s$  and  $F_r$  data measured using an HP 8510 network analyzer.

Inductor cross section is approximately 16 microns wide and 5 microns thick.

Maximum current rating: 250 mA.

Other values available upon request.

