



Chipsmall Limited consists of a professional team with an average of over 10 year of expertise in the distribution of electronic components. Based in Hongkong, we have already established firm and mutual-benefit business relationships with customers from,Europe,America and south Asia,supplying obsolete and hard-to-find components to meet their specific needs.

With the principle of “Quality Parts,Customers Priority,Honest Operation,and Considerate Service”,our business mainly focus on the distribution of electronic components. Line cards we deal with include Microchip,ALPS,ROHM,Xilinx,Pulse,ON,Everlight and Freescale. Main products comprise IC,Modules,Potentiometer,IC Socket,Relay,Connector.Our parts cover such applications as commercial,industrial, and automotives areas.

We are looking forward to setting up business relationship with you and hope to provide you with the best service and solution. Let us make a better world for our industry!



Contact us

Tel: +86-755-8981 8866 Fax: +86-755-8427 6832

Email & Skype: info@chipsmall.com Web: www.chipsmall.com

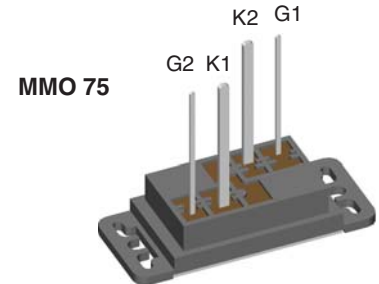
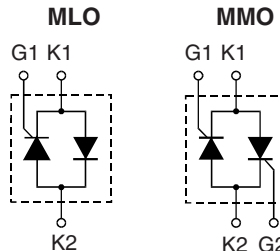
Address: A1208, Overseas Decoration Building, #122 Zhenhua RD., Futian, Shenzhen, China



AC Controller Modules

$I_{RMS} = 86 \text{ A}$
 $V_{RRM} = 1200-1600 \text{ V}$

V_{RSM}	V_{RRM}	Type	
V_{DSM}	V_{DRM}		
V	V		
1200	1200	MLO 75-12io1	MMO 75-12io1
1600	1600	MLO 75-16io1	MMO 75-16io1



K1 = Cathode 1, G1 = Gate 1
 K2 = Cathode 2, G2 = Gate 2
 (MLO 36 has no G2 lead)

Symbol	Conditions	Maximum Ratings	
I_{RMS}	$T_K = 85^\circ\text{C}$, 50 - 400 Hz (for single controller)	86	A
I_{TRMS}	$T_{VJ} = T_{VJM}$	62	A
I_{TAVM}	$T_K = 85^\circ\text{C}$; (180° sine)	39	A
I_{TSM}	$T_{VJ} = 45^\circ\text{C}$; $V_R = 0$	t = 10 ms (50 Hz), sine	1150 A
		t = 8.3 ms (60 Hz), sine	1230 A
	$T_{VJ} = T_{VJM}$; $V_R = 0$	t = 10 ms (50 Hz), sine	1000 A
		t = 8.3 ms (60 Hz), sine	1100 A
I^2t	$T_{VJ} = 45^\circ\text{C}$; $V_R = 0$	t = 10 ms (50 Hz), sine	6600 A ² s
		t = 8.3 ms (60 Hz), sine	6280 A ² s
	$T_{VJ} = T_{VJM}$; $V_R = 0$	t = 10 ms (50 Hz), sine	5000 A ² s
		t = 8.3 ms (60 Hz), sine	5020 A ² s
$(di/dt)_{cr}$	$T_{VJ} = T_{VJM}$; f = 50 Hz, $t_p = 200 \mu\text{s}$ $V_D = \frac{2}{3} V_{DRM}$ $I_G = 0.45 \text{ A}$ $di_G/dt = 0.45 \text{ A}/\mu\text{s}$	repetitive, $I_T = 150 \text{ A}$	100 A/ μs
		non repetitive, $I_T = I_{TAVM}$	500 A/ μs
$(dv/dt)_{cr}$	$T_{VJ} = T_{VJM}$; $R_{GK} = \infty$; method 1 (linear voltage rise)	$V_{DR} = \frac{2}{3} V_{DRM}$	1000 V/ μs
P_{GM}	$T_{VJ} = T_{VJM}$	$t_p = 30 \mu\text{s}$	10 W
	$I_T = I_{TAVM}$	$t_p = 300 \mu\text{s}$	5 W
P_{GAVM}			0.5 W
V_{RGM}			10 V
T_{VJ}			-40...+125 °C
T_{VJM}			125 °C
T_{stg}			-40...+125 °C
V_{ISOL}	50/60 Hz, RMS	t = 1 min	3000 V~
	$I_{ISOL} \leq 1 \text{ mA}$	t = 1 s	3600 V~
M_d	Mounting torque	(M3)	$0.7 \pm 0.1 \text{ Nm}$
		(UNF 4-32)	$6 \pm 0.9 \text{ lb.in.}$
Weight	typ.		15 g

Data according to IEC 60747 and to a single thyristor/diode unless otherwise stated.

Features

- Thyristor controller for AC (circuit W1C acc. to IEC) for mains frequency
- Direct copper bonded Al_2O_3 -ceramic base plate
- Isolation voltage 3600 V~
- Planar passivated chips
- UL registered, E 72873
- Long wire leads suitable for PC board soldering

Applications

- Switching and control of single and three phase AC
- Softstart AC motor controller
- Solid state switches
- Light and temperature control

Advantages

- Easy to mount with two screws
- Space and weight savings
- Improved temperature and power cycling
- High power density

Symbol	Conditions	Characteristic Values
I_R, I_D	$T_{VJ} = T_{VJM}; V_R = V_{RRM}; V_D = V_{DRM}$	≤ 5 mA
V_T	$I_T = 100$ A; $T_{VJ} = 25^\circ\text{C}$	≤ 1.4 V
V_{T0}	For power-loss calculations only	0.85 V
r_T		5.0 m Ω
V_{GT}	$V_D = 6$ V; $T_{VJ} = 25^\circ\text{C}$	≤ 1.5 V
	$T_{VJ} = -40^\circ\text{C}$	≤ 1.6 V
I_{GT}	$V_D = 6$ V; $T_{VJ} = 25^\circ\text{C}$	≤ 150 mA
	$T_{VJ} = -40^\circ\text{C}$	≤ 200 mA
I_{GM}	$t_p = 50$ μs ; $f = 60$ Hz; $I_T = I_{TAVM}$	6 A
V_{GD}	$T_{VJ} = T_{VJM}; V_D = 2/3 V_{DRM}$	≤ 0.25 V
I_{GD}		≤ 5 mA
I_L	$T_{VJ} = 25^\circ\text{C}$; $t_p = 10$ μs ; $V_D = 6$ V $I_G = 0.45$ A; $di_G/dt = 0.45$ A/ μs	≤ 300 mA
I_H	$T_{VJ} = 25^\circ\text{C}$; $V_D = 6$ V; $R_{GK} = \infty$	≤ 100 mA
t_{gd}	$T_{VJ} = 25^\circ\text{C}$; $V_D = 1/2 V_{DRM}$ $I_G = 0.45$ A; $di_G/dt = 0.45$ A/ μs	≤ 2 μs
t_q	$T_{VJ} = T_{VJM}; I_T = 50$ A; $t_p = 200$ μs ; $-di/dt = 10$ A/ μs $V_R = 100$ V; $dv/dt = 15$ V/ μs ; $V_D = 2/3 V_{DRM}$	typ. 150 μs
R_{thJC}	per thyristor/diode; DC current per module	0.55 K/W 0.275 K/W
R_{thJK}	per thyristor/diode; DC current per module	0.75 K/W 0.375 K/W
d_s	Creeping distance on surface	4.5 mm
d_A	Creepage distance in air	4.5 mm
a	Max. allowable acceleration	50 m/s ²

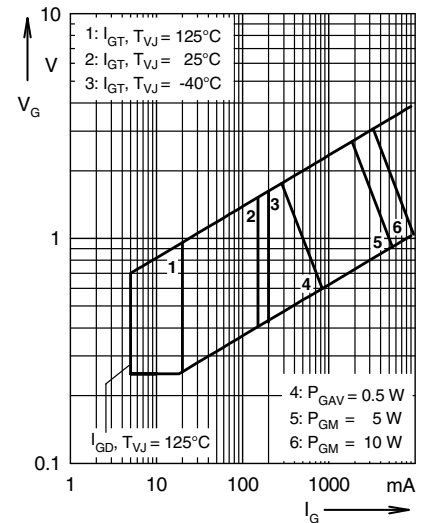


Fig. 1 Gate trigger characteristics

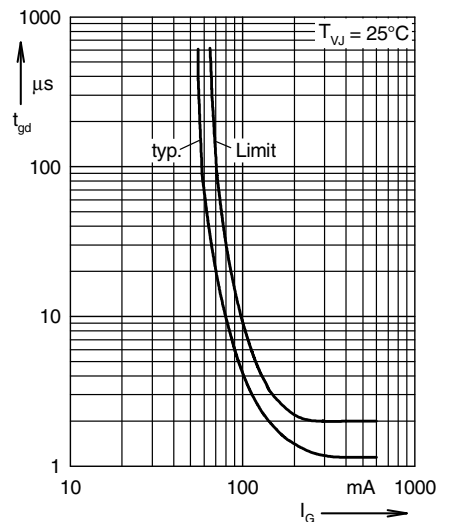
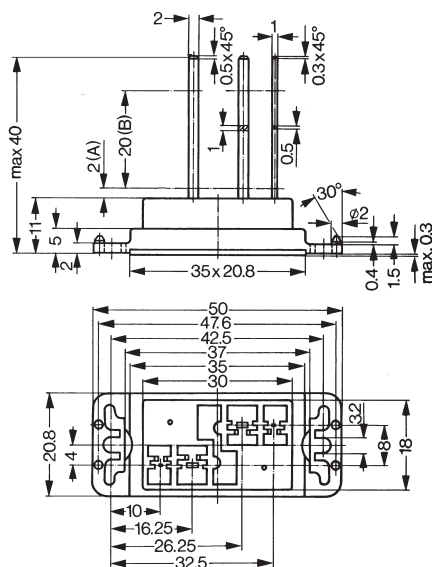


Fig. 2 Gate trigger delay time

Dimensions in mm (1 mm = 0.0394")

MLO 75



MMO 75

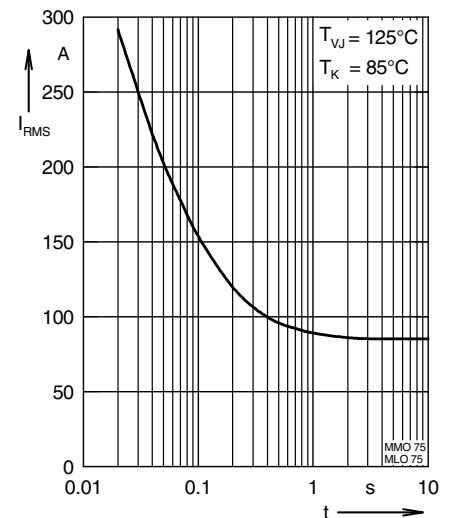
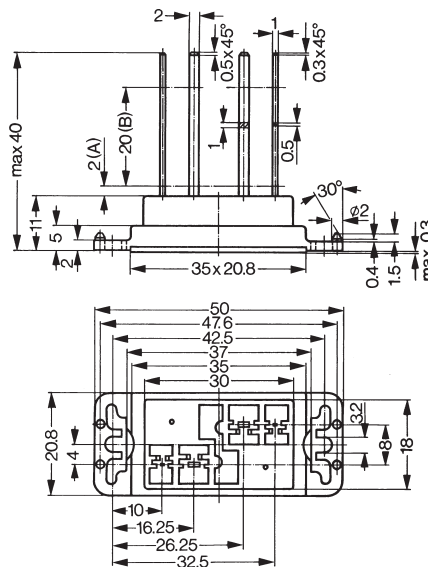


Fig. 3 Rated RMS current versus time (360° conduction)

IXYS reserves the right to change limits, test conditions and dimensions.

20070404a

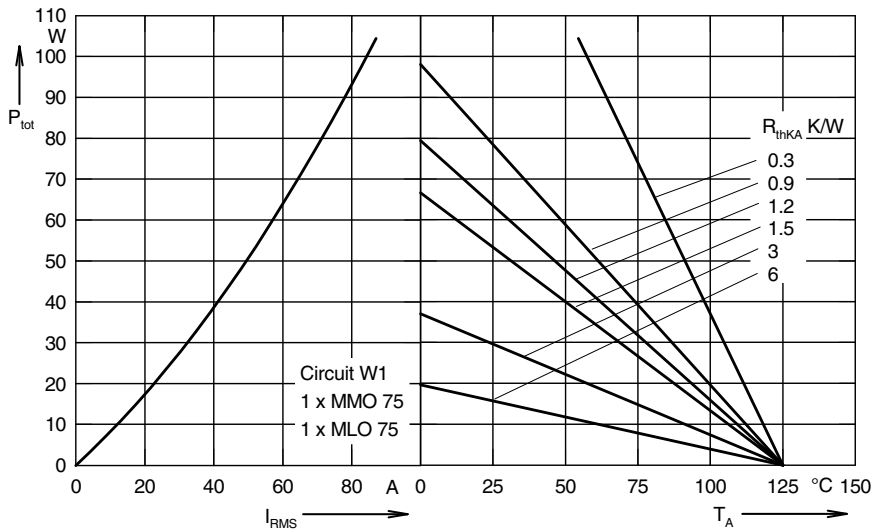


Fig. 4 Load current capability for single phase AC controller

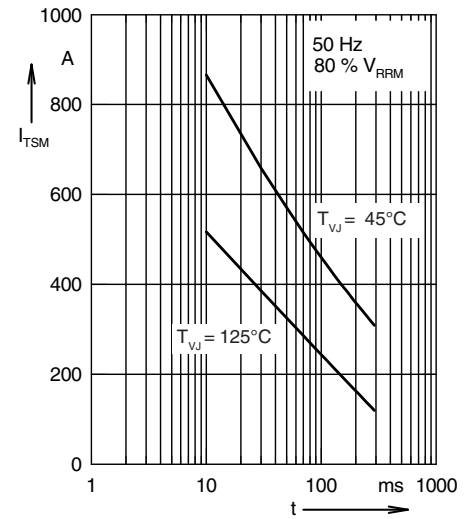


Fig. 5 Surge overload current
 I_{TSM} , I_{FSM} : Crest value, t : duration

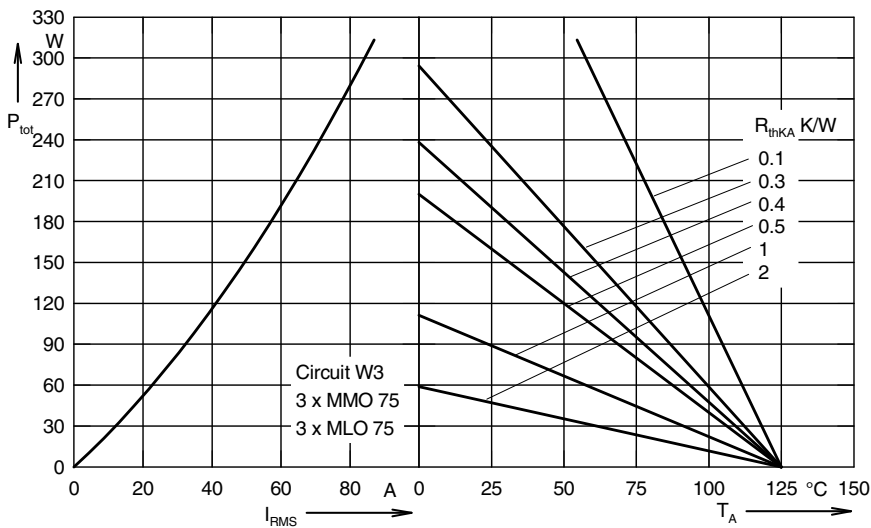


Fig. 6 Load current capability for three phase AC controller: 3xMMO 75/MLO 75

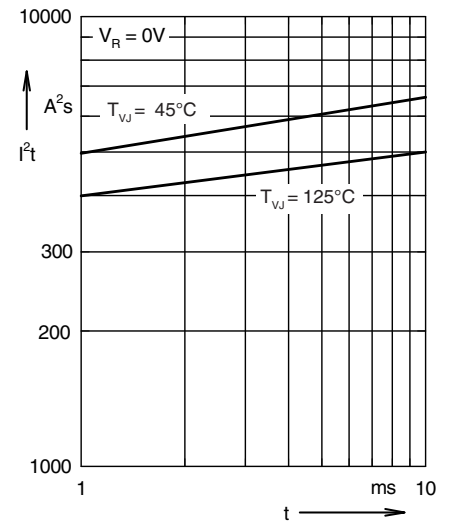


Fig. 7 I^2t versus time (1-10 ms)

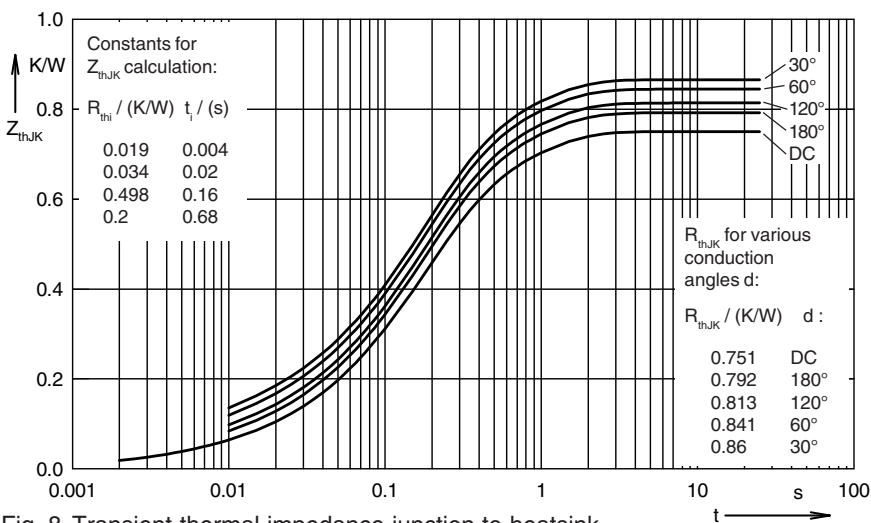


Fig. 8 Transient thermal impedance junction to heatsink (per thyristor or diode)

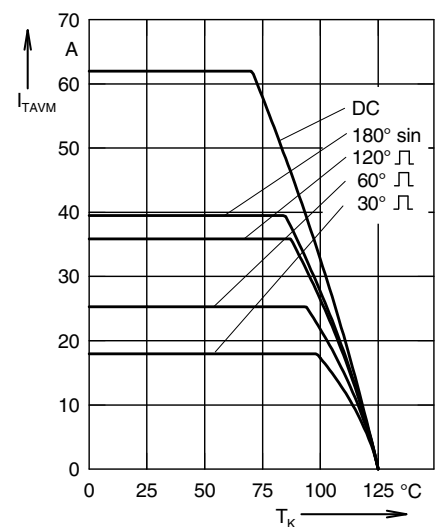


Fig. 9 Maximum on-state current vs. heatsink temperature

IXYS reserves the right to change limits, test conditions and dimensions.

20070404a