



Chipsmall Limited consists of a professional team with an average of over 10 year of expertise in the distribution of electronic components. Based in Hongkong, we have already established firm and mutual-benefit business relationships with customers from,Europe,America and south Asia,supplying obsolete and hard-to-find components to meet their specific needs.

With the principle of “Quality Parts,Customers Priority,Honest Operation,and Considerate Service”,our business mainly focus on the distribution of electronic components. Line cards we deal with include Microchip,ALPS,ROHM,Xilinx,Pulse,ON,Everlight and Freescale. Main products comprise IC,Modules,Potentiometer,IC Socket,Relay,Connector.Our parts cover such applications as commercial,industrial, and automotives areas.

We are looking forward to setting up business relationship with you and hope to provide you with the best service and solution. Let us make a better world for our industry!



## Contact us

Tel: +86-755-8981 8866 Fax: +86-755-8427 6832

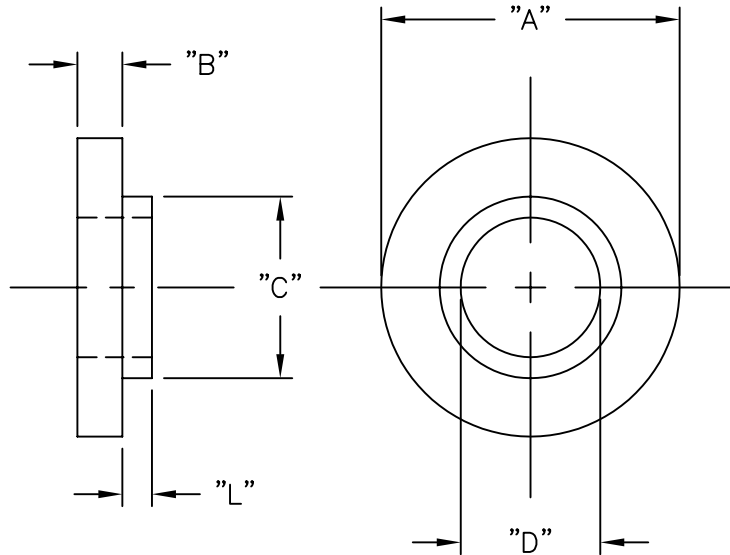
Email & Skype: info@chipsmall.com Web: www.chipsmall.com

Address: A1208, Overseas Decoration Building, #122 Zhenhua RD., Futian, Shenzhen, China



PART NO.	SCREW SIZE	APP. METRIC EQUIVALENT	"L" ±.010 (±0.3)	"A" ±.010 (±0.3)	"B" ±.010 (±0.3)	"C" ±.005 (±0.1)	"D" ±.005 (±0.1)
MNI-HT #4-2	#4	M3	.031 (0.8)	.280 (7.1)	.047 (1.2)	.145 (3.7)	.118 (3.0)
MNI-HT #4-8			.125 (3.2)				
MNI-HT #4-12			.185 (4.7)				
MNI-HT-#4-220 *			.032 (0.8)	.215 (5.5)	.040 (1.0)	.135 (3.4)	.116 (2.9)
MNI-HT-#6-2	#6	M3.5	.031 (0.8)	.312 (7.9)	.047 (1.2)	.190 (4.8)	.146 (3.7)
MNI-HT-#10-6	#10	M4.5	.093 (2.4)	.399 (10.1)	.063 (1.6)	.260 (6.6)	.200 (5.1)

\* DESIGN ALLOWS INSERTION IN THE TAB OF A TO-220 TRANSISTOR



NOTES:

1. MATERIAL: 40% GLASS FILLED.  
POLYPHENYLENE SULFIDE, (RMS-50) UL94 V-0.
2. COLOR: BLACK.

TITLE: MOLDED NYLON INSULATOR, HIGH TEMPERATURE			DWG IN IN (MM) FINAL				
TOLERANCES UNLESS NOTED .XX=±.010 .XXX=±.005 FRAC=±1/64 ANG=±1'			FILE # MNI-HT	DWN: J.B.	APP:	PART # SEE TABLE	PRINT TYPE CA
B   UPDATED TABLE AND ADDED "SULFIDE" TO NOTES   SM 02.25.02			MAT'L: SEE NOTES	DT: 01-17-96	DT:		
A   CHANGED FILE NO. AND TITLE BLOCK   SM 12.04.01			RE: RICHCO, INC.	RICHCO INC. PO BOX 804238, CHICAGO, 60680 (773) 539-4060			
REV   DESCRIPTION   ENGR DATE							