



Chipsmall Limited consists of a professional team with an average of over 10 year of expertise in the distribution of electronic components. Based in Hongkong, we have already established firm and mutual-benefit business relationships with customers from,Europe,America and south Asia,supplying obsolete and hard-to-find components to meet their specific needs.

With the principle of “Quality Parts,Customers Priority,Honest Operation,and Considerate Service”,our business mainly focus on the distribution of electronic components. Line cards we deal with include Microchip,ALPS,ROHM,Xilinx,Pulse,ON,Everlight and Freescale. Main products comprise IC,Modules,Potentiometer,IC Socket,Relay,Connector.Our parts cover such applications as commercial,industrial, and automotives areas.

We are looking forward to setting up business relationship with you and hope to provide you with the best service and solution. Let us make a better world for our industry!



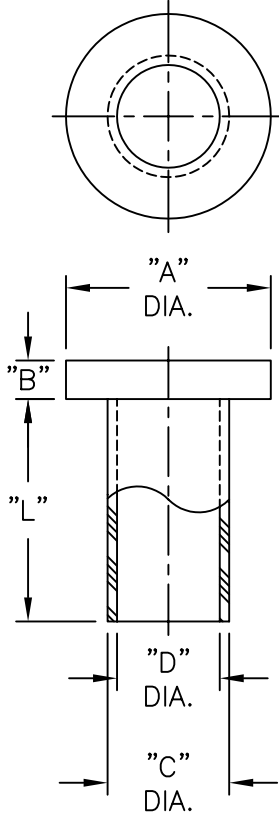
Contact us

Tel: +86-755-8981 8866 Fax: +86-755-8427 6832

Email & Skype: info@chipsmall.com Web: www.chipsmall.com

Address: A1208, Overseas Decoration Building, #122 Zhenhua RD., Futian, Shenzhen, China





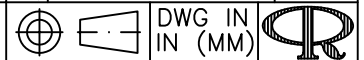
PART NO.	SCREW SIZE	APPROX. METRIC EQUIV.	"L"±.007 (±0.18)	"A"±.007 (±0.18)	"B"±.007 (±0.18)	"C"±.005 (±0.13)	"D"±.005 (±0.13)
MNI #2-2	#2	M2.2	.031 (0.8)	.181 (4.6)		.120 (3.0)	.090 (2.3)
MNI #2-4			.063 (1.6)				
MNI #2-6			.093 (2.4)				
MNI #2-8			.125 (3.2)				
MNI #2-12			.187 (4.7)				
MNI #2-16			.250 (6.4)				
MNI #2-24	.375 (9.5)						
MNI #4-2	#4	M3	.031 (0.8)	.235 (6.0)	.047 (1.2)	.145 (3.7)	.115 (2.9)
MNI #4-3			.046 (1.2)				
MNI #4-4			.063 (1.6)				
MNI #4-5			.084 (2.1)				
MNI #4-6			.093 (2.4)				
MNI #4-8			.125 (3.2)				
MNI #4-10			.156 (4.0)				
MNI #4-12			.187 (4.7)				
MNI #4-16			.250 (6.4)				
MNI #4-24			.375 (9.5)				
MNI #5-3	#5		.050 (1.3)	.370 (9.4)		.236 (6.0)	.128 (3.3)
MNI #6-2	#6	M3.5	.031 (0.8)	.290 (7.4)		.170 (4.3)	.140 (3.6)
MNI #6-4			.063 (1.6)				
MNI #6-6			.093 (2.4)				
MNI #6-8			.125 (3.2)				
MNI #6-12			.187 (4.7)				
MNI #6-16			.250 (6.4)				
MNI #6-24	.375 (9.5)						
MNI #6-32	.500 (12.7)						
MNI #8-2	#8	M4	.031 (0.8)	.344 (8.7)		.205 (5.2)	.173 (4.4)
MNI #8-4			.063 (1.6)				
MNI #8-6			.093 (2.4)				
MNI #8-8			.125 (3.2)				
MNI #8-12			.187 (4.7)				
MNI #8-16			.250 (6.4)				
MNI #8-24	.375 (9.5)						
MNI #8-32	.500 (12.7)						
MNI #10-2	#10	M5	.031 (0.8)	.399 (10.1)	.063 (1.6)	.260 (6.6)	.200 (5.1)
MNI #10-4			.063 (1.6)				
MNI #10-6			.093 (2.4)				
MNI #10-8			.125 (3.2)				
MNI #10-12			.187 (4.7)				
MNI #10-16			.250 (6.4)				
MNI #10-24	.375 (9.5)						
MNI #10-32	.500 (12.7)						
MNI 1/4-2	1/4	M6	.031 (0.8)	.513 (13.0)	.065 (1.7)	.312 (7.9)	.260 (6.6)
MNI 1/4-4			.063 (1.6)				
MNI 1/4-6			.093 (2.4)				
MNI 1/4-8			.125 (3.2)				
MNI 1/4-12			.187 (4.7)				
MNI 1/4-16			.250 (6.4)				
MNI 1/4-24	.375 (9.5)						
MNI 1/4-32	.500 (12.7)						
MNI 5/16-2	5/16	M8	.031 (0.8)	.620 (15.7)	.063 (1.6)	.360 (9.1)	.320 (8.1)
MNI 5/16-4			.063 (1.6)				
MNI 5/16-6			.093 (2.4)				
MNI 5/16-8			.125 (3.2)				
MNI 5/16-12			.187 (4.7)				
MNI 5/16-16			.250 (6.4)				
MNI 5/16-24	.375 (9.5)						
MNI M3-1.0	-	M3	.039 (1.0)	.280 (7.1)	.039 (1.0)	.150 (3.8)	.122 (3.1)
MNI M3-2.5	-	M3	.098 (2.5)				
MNI M3-3.5	-	M3	.137 (3.5)				
MNI M4-1.3	-	M4	.050 (1.3)	.370 (9.4)	.047 (1.2)	.236 (6.0)	.165 (4.2)

NOTES:

- MATERIAL: NYLON 6/6 (RMS-48).
- COLOR: NATURAL, COLOR BLACK AVAILABLE BY SPECIAL ORDER ONLY.

E	REDRAWN TABLE (NO CHANGES)	SM 09.13.02
-	SEE ENGINEERING FOR REVISIONS	-
R E V	DESCRIPTION	ENGR DATE

TITLE: MOLDED NYLON INSULATORS



TOLERANCES UNLESS NOTED .XX=±.010 .XXX=±.005 FRAC=±1/64 ANG=±1'	FILE # MNI	DWN: J.B.	APP:	FINAL	
	MAT'L: SEE NOTES	DT: 11-03-94	DT:	PART #	PRINT TYPE
RE: RICHCO, INC.	RICHCO INC. PO BOX 804238, CHICAGO, 60680 (773) 539-4060		SEE TABLE	CA	