



Chipsmall Limited consists of a professional team with an average of over 10 year of expertise in the distribution of electronic components. Based in Hongkong, we have already established firm and mutual-benefit business relationships with customers from,Europe,America and south Asia,supplying obsolete and hard-to-find components to meet their specific needs.

With the principle of “Quality Parts,Customers Priority,Honest Operation,and Considerate Service”,our business mainly focus on the distribution of electronic components. Line cards we deal with include Microchip,ALPS,ROHM,Xilinx,Pulse,ON,Everlight and Freescale. Main products comprise IC,Modules,Potentiometer,IC Socket,Relay,Connector.Our parts cover such applications as commercial,industrial, and automotives areas.

We are looking forward to setting up business relationship with you and hope to provide you with the best service and solution. Let us make a better world for our industry!



## Contact us

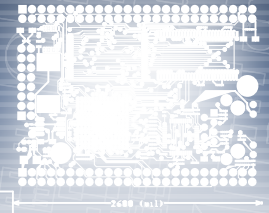
Tel: +86-755-8981 8866 Fax: +86-755-8427 6832

Email & Skype: info@chipsmall.com Web: www.chipsmall.com

Address: A1208, Overseas Decoration Building, #122 Zhenhua RD., Futian, Shenzhen, China







## Features

- Companion development kit includes all of the hardware and software you will need to develop embedded applications. This includes an RTOS, TCP/IP, Web Server, C/C++ Compiler, IDE, Graphical Debugger, configuration and deployment tools.
- Start writing your application code immediately, instead of integrating development tools or building custom hardware.
- Use as a high-performance single board computer, or as a network interface processor.
- Module supports 2 serial ports, 4 timers, address bus, data bus, GPIO, SPI, interrupts, PWM, USB and more.
- Integrated 62Mhz 32-bit Coldfire 5272 processor with integrated 10/100 Ethernet and MAC.
- 8MB SDRAM, 2MB of Flash Memory.
- Temperature Range: 0°C to 70° C.

## MOD5272

# NetBurner's High Performance Embedded Network Core Module

### Introduction

The MOD5272 processor modules are low cost, high performance single board computers that are excellent solutions to network-enable both existing and new product designs with 10/100BaseT Ethernet. Based on the Freescale ColdFire 5272 32-bit processors with integrated 10/100 Ethernet MAC, they have plenty of horsepower for the most demanding applications (rated at 60+MIPS with 62Mhz clock).

### Network-Enable New or Existing Applications

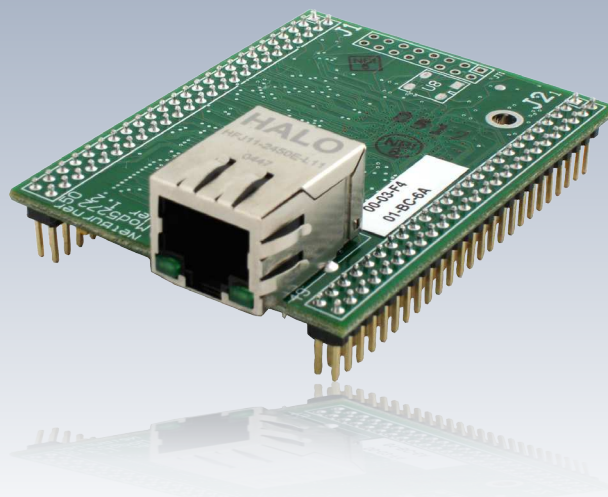
Add a module to an existing application network-enable your device though its serial ports, GPIO pins, or serial bit streams. If you have an application-specific motherboard, you can add a module and have a powerful processing platform that can function as the control processor for your product, or as a low cost network interface processor.

### Customize to Suit Any Application

The NetBurner Network Development Kit enables you to quickly and easily create custom applications. NetBurner has a solid reputation for development platforms to facilitate rapid product development, and the module kits are no exception. The kit includes the MOD5272 module, development board, TCP/IP Stack, uC/OS Real-time operating system, Web Server, GNU C/C++ compiler and linker, GDB graphical debugger, end-user device configuration, flash update utilities, and much more.

### Real 32-Bit Performance

Traditionally, companies using 8 and 16-bit platforms find it nearly impossible to run resource-intensive applications on fast Ethernet connections. The NetBurner Embedded Network Core Module features a Web-based control interface, a full 32-bit architecture providing 60+ MIPS, and the ability to send and receive E-mail. This processing platform provides the horsepower to handle both 10/100 Ethernet connections and resource-demanding applications with ease and flexibility.



## MOD5272 Pinout and Signal Description

MOD5272 <sup>1</sup> Pin	Header J1	Header J2
1	GND	GND
2	GND	VCC3V
3	VCC3V	URXD0
4	R*/W	UTXD0
5	*CS1 <sup>2</sup>	NC
6	*CS2 <sup>2</sup>	PC14
7	*CS3 <sup>2</sup>	PC13
8	*OE	PC15
9	*BS2	PC11
10	*BS3	PC12
11	*TIP <sup>2</sup>	PC10
12	D16	PC9
13	*TA	PC8
14	D18	GND
15	D17	PC0
16	D20	PC1
17	D19	PC4
18	D22	PC2
19	D21	PC5
20	D24	PC6
21	D23	URXD1
22	D26	UTXD1
23	D25	PC3
24	D28	PC7
25	D27	SPICK
26	D30	SPL_CS3
27	D29	SPL_DIN
28	*RSTI	SPL_DOUT
29	D31	PB2 (H2)
30	*RSTO	SPL_CS0
31	CLKOUT-62.5MHz	TIN0/PB4/UART0CLK <sup>3</sup>
32	A0	PWM1
33	A1	PA5
34	A2	PWM2/TOUT1
35	A3	SPL_CS2
36	A4	TOUT0
37	A5	TIN1
38	A6	PB3 (H3)
39	A7	PA0
40	A8	SPL_CS1
41	A9	USB_D-
42	A10	PA1
43	A11	IRQ1
44	A12	USB_D+
45	A13	IRQ3
46	A14	GND
47	A15	IRQ5
48	VCC3V	PA15/IRQ6
49	GND	GND
50	GND	VCC3V

<sup>1</sup>The ColdFire 5272 processor supports USB device mode only. A 48Mhz oscillator must be installed in locaton U8 of the Mod5272.

<sup>2</sup>The TIP signal is the logical AND of /CS1, /CS2 and /CS3. TIP can be used to control an external data bus buffer for the data bus signals. An example circuit design can be found on the Module Development Board schematic. An external data bus buffer is recommended for any designs that use data bus signals D16 - D31.

<sup>3</sup>J2-31 represents TIN0 and PB4/UART0 external baud rate clock. These two signals are tied together on the module PCB.

## Ordering Information

### Part Number and Description

MOD5272-100IR	Core Module Industrial Temperature RoHS
NNDK-MOD5272-KIT	Development Kit

## Specifications

### Processor

32-bit Freescale ColdFire 5272 running at 62MHz

### Software Development

NetBurner Network Development Kit includes: MOD5272 module, development board, TCP/IP stack, Web Server, real-time operating system (RTOS), ANSI C/C++ compiler and linker, assembler, graphical debugger, integrated development environment (IDE), code update, configuration, and deployment tools.

### Network Interface

10/100 BaseT with RJ-45 connector

### Network Protocols Supported

Complete protocol support included. Please reference NetBurner Software Datasheet ([www.NetBurner.com](http://www.NetBurner.com))

### Connectors

Two dual inline 50-pin headers

### Physical Characteristics

Dimensions: 2.0" x 2.6"

Mounting Holes: 2 x 0.125" dia

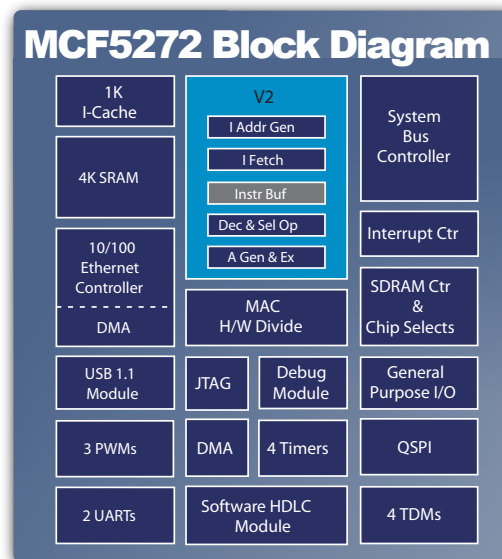
### Power Requirements

DC Input Voltage: 3.3V @500mA

### Environmental

Operating Temperature: -40°C to 85°C

## MOD5272 Block Diagram



Revision 1.0, April 4, 2006. © 2006 NetBurner, Inc. Specifications are subject to change without notice. Every effort has been made to ensure all information is correct, but NetBurner, Inc. is not responsible for inadvertent errors. Freescale(tm) and the Freescale logo are trademarks of Freescale Semiconductor, Inc. All other product or service names are the property of their respective owners. (c) Freescale Semiconductor, Inc. 2006 .

