



Chipsmall Limited consists of a professional team with an average of over 10 year of expertise in the distribution of electronic components. Based in Hongkong, we have already established firm and mutual-benefit business relationships with customers from,Europe,America and south Asia,supplying obsolete and hard-to-find components to meet their specific needs.

With the principle of “Quality Parts,Customers Priority,Honest Operation,and Considerate Service”,our business mainly focus on the distribution of electronic components. Line cards we deal with include Microchip,ALPS,ROHM,Xilinx,Pulse,ON,Everlight and Freescale. Main products comprise IC,Modules,Potentiometer,IC Socket,Relay,Connector.Our parts cover such applications as commercial,industrial, and automotives areas.

We are looking forward to setting up business relationship with you and hope to provide you with the best service and solution. Let us make a better world for our industry!



Contact us

Tel: +86-755-8981 8866 Fax: +86-755-8427 6832

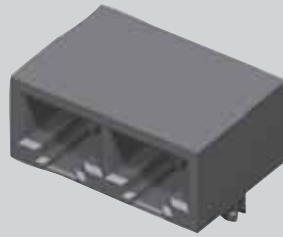
Email & Skype: info@chipsmall.com Web: www.chipsmall.com

Address: A1208, Overseas Decoration Building, #122 Zhenhua RD., Futian, Shenzhen, China

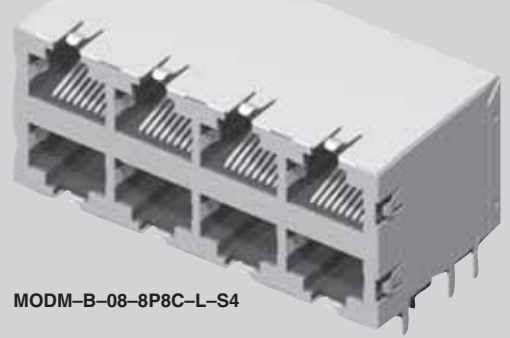




MODM-A-02-8P8C-G



MODM-B-08-8P8C-L-S4



MODM-A, MODM-B SERIES

GANGED IN-LINE/STACKED MODULAR JACKS

SPECIFICATIONS

For complete specifications and recommended PCB layouts see www.samtec.com?MODM-A

Insulator Material: PBT Glass Filled
Contact Material: Phosphor Bronze
Shield Material: Copper Alloy
Plating: Gold on Contacts, Nickel on Shield, Gold on Tails
Operating Temp Range: -25°C to +90°C
Current Rating: 2 A per Contact
Voltage Rating: 120 VAC
Contact Resistance: 20 mΩ max
Minimum Cycles: 500
System Applications: CAT3
Packaging: Packaged and shipped in Bulk Packaging Trays; Trays suitable for automation are available upon request.
RoHS Compliant: Yes
Lead-Free Solderable: Yes (Wave Solder only)



MODM - A	NO. OF PORTS	POSITIONS CONTACTS	PLATING	SHIELD OPTION																								
-02 thru -06, -08, -10	-8P8C = 8 Positions 8 Contacts per port	-G = 15μ" (0,38μm) Gold on Mating Area, Gold Flash on Tails -E = 50μ" (1,27μm) Gold on Mating Area, Gold Flash on Tails	-S = Shielded (No Panel Grounds) (-03 and -10 Not Available) -S4 = Shielded with Top, Bottom and Side Panel Grounds (Requires -02, -04 or -08 ports)																									
				<p>APPLICATION SPECIFIC OPTION Other plating options available. Call Samtec.</p> <table border="1"> <thead> <tr> <th>NO. OF PORTS</th> <th>A Unshielded</th> <th>A Shielded</th> </tr> </thead> <tbody> <tr> <td>-02</td> <td>(30,46) 1.199</td> <td>(31,00) 1.220</td> </tr> <tr> <td>-03</td> <td>(44,43) 1.749</td> <td>N/A</td> </tr> <tr> <td>-04</td> <td>(58,40) 2.299</td> <td>(58,94) 2.320</td> </tr> <tr> <td>-05</td> <td>(72,37) 2.849</td> <td>(72,91) 2.870</td> </tr> <tr> <td>-06</td> <td>(86,34) 3.399</td> <td>(86,88) 3.420</td> </tr> <tr> <td>-08</td> <td>(114,28) 4.499</td> <td>(114,90) 4.524</td> </tr> <tr> <td>-10</td> <td>(128,28) 5.050</td> <td>N/A</td> </tr> </tbody> </table>	NO. OF PORTS	A Unshielded	A Shielded	-02	(30,46) 1.199	(31,00) 1.220	-03	(44,43) 1.749	N/A	-04	(58,40) 2.299	(58,94) 2.320	-05	(72,37) 2.849	(72,91) 2.870	-06	(86,34) 3.399	(86,88) 3.420	-08	(114,28) 4.499	(114,90) 4.524	-10	(128,28) 5.050	N/A
NO. OF PORTS	A Unshielded	A Shielded																										
-02	(30,46) 1.199	(31,00) 1.220																										
-03	(44,43) 1.749	N/A																										
-04	(58,40) 2.299	(58,94) 2.320																										
-05	(72,37) 2.849	(72,91) 2.870																										
-06	(86,34) 3.399	(86,88) 3.420																										
-08	(114,28) 4.499	(114,90) 4.524																										
-10	(128,28) 5.050	N/A																										

SPECIFICATIONS

For complete specifications and recommended PCB layouts see www.samtec.com?MODM-B

Insulator Material: PBT Glass Filled
Contact Material: Phosphor Bronze
Shield Material: Copper Alloy
Plating: Gold on Contacts, Nickel on Shield, Gold on Tails
Operating Temp Range: -25°C to +90°C
Current Rating: 1.5 A per contact
Voltage Rating: 120 VAC max
Contact Resistance: 20 mΩ max
Minimum Cycles: 500
System Applications: CAT3
Packaging: Packaged and shipped in Bulk Packaging Trays; Trays suitable for automation are available upon request.
RoHS Compliant: Yes
Lead-Free Solderable: Yes (Wave Solder only)



MODM - B	NO. OF PORTS	POSITIONS CONTACTS	PLATING	OPTIONS																				
-02, -04, -06, -08, -12, -16	-8P8C = 8 Positions 8 Contacts per port	-L = 15μ" (0,38 μm) Gold on Mating Area, Gold Flash on Tails -U = 50μ" (1,27μm) Gold on Mating Area, Gold Flash on Tails	-S4 = Shielded with Top, Bottom and Side Panel Grounds (-02 port does not have panel grounds)																					
		<p>APPLICATION SPECIFIC OPTION Other plating options available. Call Samtec.</p> <table border="1"> <thead> <tr> <th>NO. OF PORTS</th> <th>A Unshielded</th> <th>A Shielded</th> </tr> </thead> <tbody> <tr> <td>-02</td> <td>(16,50) .650</td> <td>(17,25) 0.679</td> </tr> <tr> <td>-04</td> <td>(30,50) 1.200</td> <td>(31,25) 1.230</td> </tr> <tr> <td>-06</td> <td>(44,50) 1.752</td> <td>(45,25) 1.781</td> </tr> <tr> <td>-08</td> <td>(58,50) 2.303</td> <td>(59,25) 2.333</td> </tr> <tr> <td>-12</td> <td>(86,50) 3.406</td> <td>(87,25) 3.435</td> </tr> <tr> <td>-16</td> <td>(114,50) 4.508</td> <td>(115,25) 4.537</td> </tr> </tbody> </table>		NO. OF PORTS	A Unshielded	A Shielded	-02	(16,50) .650	(17,25) 0.679	-04	(30,50) 1.200	(31,25) 1.230	-06	(44,50) 1.752	(45,25) 1.781	-08	(58,50) 2.303	(59,25) 2.333	-12	(86,50) 3.406	(87,25) 3.435	-16	(114,50) 4.508	(115,25) 4.537
NO. OF PORTS	A Unshielded	A Shielded																						
-02	(16,50) .650	(17,25) 0.679																						
-04	(30,50) 1.200	(31,25) 1.230																						
-06	(44,50) 1.752	(45,25) 1.781																						
-08	(58,50) 2.303	(59,25) 2.333																						
-12	(86,50) 3.406	(87,25) 3.435																						
-16	(114,50) 4.508	(115,25) 4.537																						

Due to technical progress, all designs, specifications and components are subject to change without notice.