



Chipsmall Limited consists of a professional team with an average of over 10 year of expertise in the distribution of electronic components. Based in Hongkong, we have already established firm and mutual-benefit business relationships with customers from,Europe,America and south Asia,supplying obsolete and hard-to-find components to meet their specific needs.

With the principle of “Quality Parts,Customers Priority,Honest Operation,and Considerate Service”,our business mainly focus on the distribution of electronic components. Line cards we deal with include Microchip,ALPS,ROHM,Xilinx,Pulse,ON,Everlight and Freescale. Main products comprise IC,Modules,Potentiometer,IC Socket,Relay,Connector.Our parts cover such applications as commercial,industrial, and automotives areas.

We are looking forward to setting up business relationship with you and hope to provide you with the best service and solution. Let us make a better world for our industry!



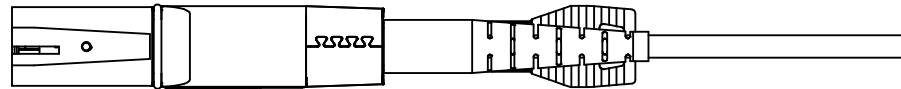
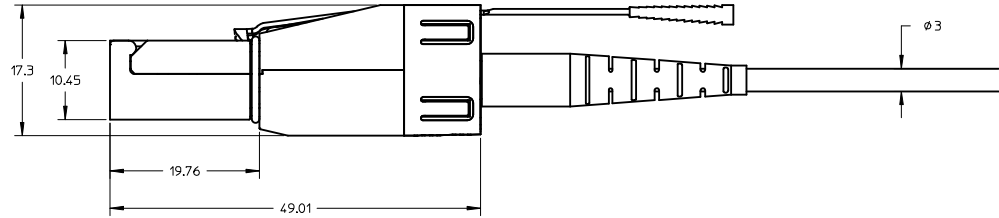
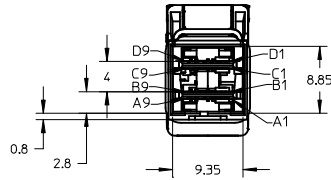
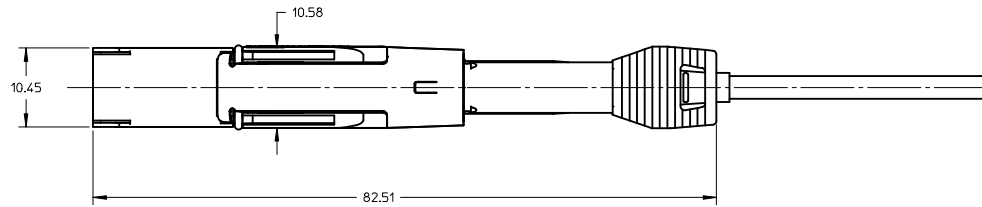
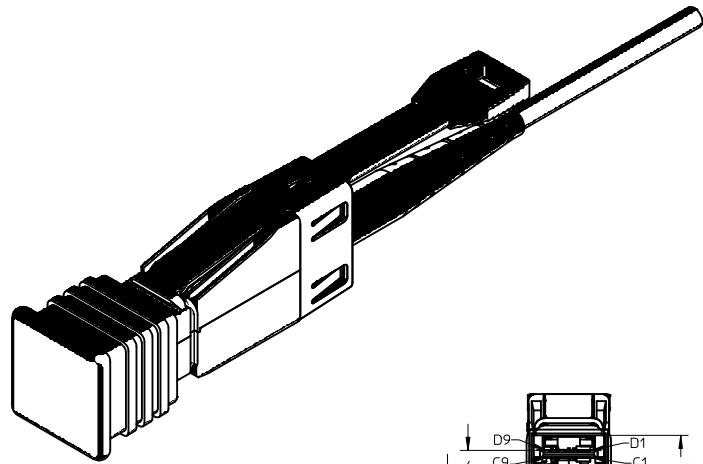
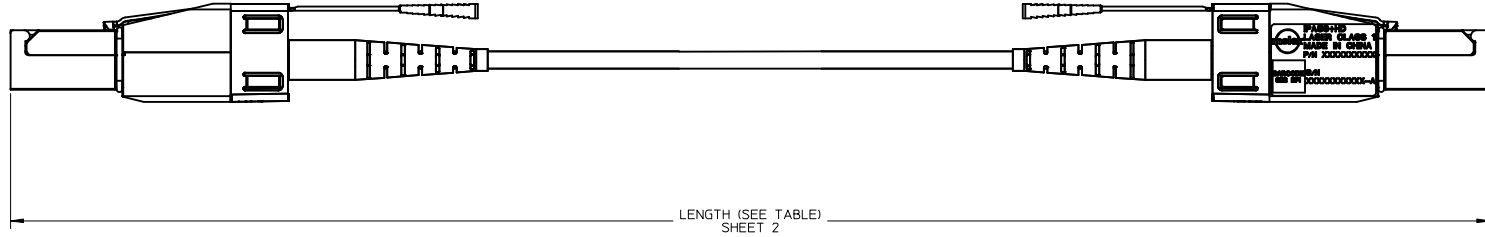
Contact us

Tel: +86-755-8981 8866 Fax: +86-755-8427 6832

Email & Skype: info@chipsmall.com Web: www.chipsmall.com

Address: A1208, Overseas Decoration Building, #122 Zhenhua RD., Futian, Shenzhen, China





NOTES:

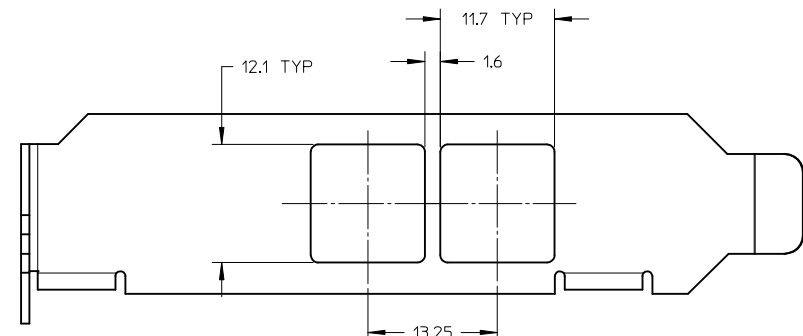
1. MATERIALS=
 - BACKSHELLS - ZINC DIECAST WITH NICKEL PLATING.
 - LATCH - STAINLESS STEEL.
 - PULL - MOLDED PLASTIC.
2. CABLE TYPE PLENUM (OFNP) WITH 8 MULTIMODE FIBERS, MINIMUM BEND RADIUS 25 MM.
2. ELECTRICAL PERFORMANCE PER SFF 8644.
3. PLUG MATES TO 1X1, 1X2 AND 1X4 RECEPTACLE - EMI HOUSING ASSEMBLY SERIES 76866.
4. THIS PRODUCT MEETS THE RESTRICTION OF HAZARDOUS SUBSTANCES IN ELECTRICAL AND ELECTRONIC EQUIPMENT (RoHS) DIRECTIVE (2002/95/EC).

ENTER DESCRIPTION EC NO: MF2015-0324 DRW: MAGHAYERE 2014/12/04 CHKD: APPR: IGUMIN 2014/12/09	QUALITY SYMBOLS ∇=0 ∇=0 ∇=0	GENERAL TOLERANCES (UNLESS SPECIFIED)		DIMENSION STYLE MM ONLY		SCALE 2:1	DESIGN UNITS METRIC	THIRD ANGLE PROJECTION			
		4 PLACES ± --- ± ---	mm INCH	DRAWN BY BANDREI	DATE 2011/06/09	IPASS+ HD ACTIVE OPTICAL CABLE					
		3 PLACES ± --- ± ---		CHECKED BY WCHEN	DATE 2013/07/11						
		2 PLACES ± 0.13 ± ---		APPROVED BY WCHEN		DATE 2013/07/11	molex DOCUMENT NO. SD-106415-2001				
1 PLACE ± 0.13 ± ---		MATERIAL NO. 1064152001		SHEET NO. 1 OF 2							
0 PLACE ± ±		ANGULAR ±1/2°		THIS DRAWING CONTAINS INFORMATION THAT IS PROPRIETARY TO MOLEX INCORPORATED AND SHOULD NOT BE USED WITHOUT WRITTEN PERMISSION							
DRAFT WHERE APPLICABLE MUST REMAIN WITHIN DIMENSIONS		SIZE C									

PART NUMBER	LENGTH (METERS)	TOLERANCE (METERS)
1064152001	1	+0.2/-0.0
1064152002	2	+0.2/-0.0
1064152003	3	+0.2/-0.0
1064152004	4	+0.2/-0.0
1064152005	5	+0.2/-0.0
1064152006	6	+0.3/-0.0
1064152007	7	+0.3/-0.0
1064152008	8	+0.3/-0.0
1064152010	10	+0.4/-0.0
1064152015	15	+0.5/-0.0
1064152020	20	+0.6/-0.0
1064152025	25	+0.6/-0.0
1064152030	30	+0.6/-0.0
1064152040	40	+0.8/-0.0
1064152050	50	+1.0/-0.0
1064152075	75	+1.4/-0.0
1064152100	100	+2.0/-0.0

MINISAS HD WIRING CHART			
	-P1-		-P2-
GND	D9	—————	B9 GND
Tx2-	D8	—————▶	B8 Rx2-
Tx2+	D7	—————▶	B7 Rx2+
GND	D6	—————	B6 GND
Tx0-	D5	—————▶	B5 Rx0-
Tx0+	D4	—————▶	B4 Rx0+
GND	D3	—————	B3 GND
Vman	D2**	—————	**B2 ModPrsL
Vact	D1**	—————	**B1 Vact
SCL	C1**	—————	**A1 Rsv
SDA	C2**	—————	**A2 IntL
GND	C3	—————	A3 GND
Tx1+	C4	—————▶	A4 Rx1+
Tx1-	C5	—————▶	A5 Rx1-
GND	C6	—————	A6 GND
Tx3+	C7	—————▶	A7 Rx3+
Tx3-	C8	—————▶	A8 Rx3-
GND	C9	—————	A9 GND
GND	B9	—————	D9 GND
Rx2-	B8	—————◀	D8 Tx2-
Rx2+	B7	—————◀	D7 Tx2+
GND	B6	—————	D6 GND
Rx0-	B5	—————◀	D5 Tx0-
Rx0+	B4	—————◀	D4 Tx0+
GND	B3	—————	D3 GND
ModPrsL	B2**	—————	**D2 Vman
Vact	B1**	—————	**D1 Vact
Rsv	A1**	—————	**C1 SCL
IntL	A2**	—————	**C2 SDA
GND	A3	—————	C3 GND
Rx1+	A4	—————◀	C4 Tx1+
Rx1-	A5	—————◀	C5 Tx1-
GND	A6	—————	C6 GND
Rx3+	A7	—————◀	C7 Tx3+
Rx3-	A8	—————◀	C8 Tx3-
GND	A9	—————	C9 GND

** RESERVED FOR POWER AND MANAGEMENT INTERFACE



SHIELDED INTEGRATED HD CONNECTOR MINIMUM PITCH

ENTER DESCRIPTION EC NO: MF2015-0324 DR: MANMAGHAYERE 2014/12/04 CHKD: LGUMIN 2014/12/09 APPR: LGUMIN 2014/12/09	QUALITY SYMBOLS ▽=0 ▽=0	GENERAL TOLERANCES (UNLESS SPECIFIED) mm INCH 4 PLACES ± --- ± --- 3 PLACES ± --- ± --- 2 PLACES ± 0.13 ± --- 1 PLACE ± 0.13 ± --- ANGULAR ± 1/2°	DIMENSION STYLE MM ONLY DRAWN BY DATE BANDREI 2011/06/09 CHECKED BY DATE	SCALE --- DESIGN UNITS METRIC THIRD ANGLE PROJECTION
	DRAFT WHERE APPLICABLE MUST REMAIN WITHIN DIMENSIONS		APPROVED BY DATE WCHEN 2013/07/11	TITLE IPASS+ HD ACTIVE OPTICAL CABLE
	MATERIAL NO. 1064152001		MOLEX INCORPORATED	
	SIZE B		DOCUMENT NO. SD-106415-2001	SHEET NO. 2 OF 2