



Chipsmall Limited consists of a professional team with an average of over 10 year of expertise in the distribution of electronic components. Based in Hongkong, we have already established firm and mutual-benefit business relationships with customers from,Europe,America and south Asia,supplying obsolete and hard-to-find components to meet their specific needs.

With the principle of “Quality Parts,Customers Priority,Honest Operation,and Considerate Service”,our business mainly focus on the distribution of electronic components. Line cards we deal with include Microchip,ALPS,ROHM,Xilinx,Pulse,ON,Everlight and Freescale. Main products comprise IC,Modules,Potentiometer,IC Socket,Relay,Connector.Our parts cover such applications as commercial,industrial, and automotives areas.

We are looking forward to setting up business relationship with you and hope to provide you with the best service and solution. Let us make a better world for our industry!



Contact us

Tel: +86-755-8981 8866 Fax: +86-755-8427 6832

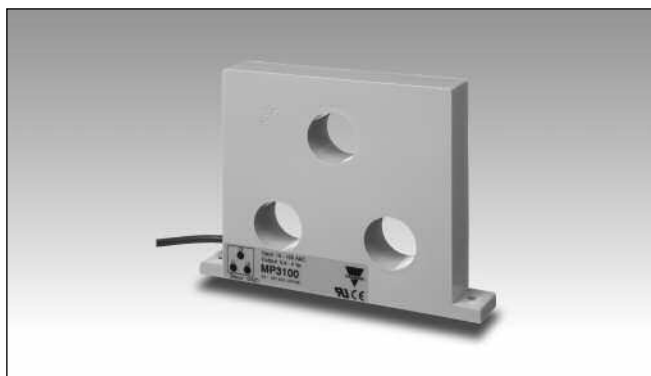
Email & Skype: info@chipsmall.com Web: www.chipsmall.com

Address: A1208, Overseas Decoration Building, #122 Zhenhua RD., Futian, Shenzhen, China



Monitoring Relays Current Transformer, 3-Phase Types MP 3005, MP 3020, MP 3100, MP 3500

CARLO GAVAZZI



- 4 types of input:
 - 0.5 - 5 A
 - 2 - 20 A
 - 10 - 100 A
 - 50 - 500 A
- For use in connection with control relays types e.g. DIB02, PIB02, DUA01, PUA01

Product Description

3-phase current transformers for 5, 20, 100 or 500 AAC. Output voltage (0.4 - 4 V_p) is proportional to measured current.

Ordering Key

MP 3005

Type _____
Input current _____

Type Selection

Input current	Type no.
5 A	MP 3005
20 A	MP 3020
100 A	MP 3100
500 A	MP 3500

Input Specifications

	MP 3005	MP 3020	MP 3100	MP 3500
Current range	0.5 - 5 AAC	2 - 20 AAC	10 - 100 AAC	50 - 500 AAC
Max. current (continuously)	20 AAC	50 AAC	150 AAC	500 AAC
Frequency range	40 Hz-1 kHz	40 Hz-1 kHz	40 Hz-1 kHz	40 Hz-1 kHz
Rated insulation voltage				
Input-output	1000 VAC _{rms}	1000 VAC _{rms}	1000 VAC _{rms}	1000 VAC _{rms}
Overvoltage category	IV (IEC 60664)	IV (IEC 60664)	IV (IEC 60664)	IV (IEC 60664)
Dielectric strength				
Dielectric voltage	6 kVAC _{rms}	6 kVAC _{rms}	6 kVAC _{rms}	6 kVAC _{rms}
Rated impulse withstand volt.	12 kV (1.2/50 μs)	12 kV (1.2/50 μs)	12 kV (1.2/50 μs)	12 kV (1.2/50 μs)
Power consumption	< 300 mW @ 5 A	< 300 mW @ 20 A	< 2 W @ 100 A	< 21 W @ 500 A

Output Specifications

	MP 3005	MP 3020	MP 3100	MP 3500
Output voltage				
(in connection with SM 115)	0.4 - 4 V _p	0.4 - 4 V _p	0.4 - 4 V _p	0.4 - 4 V _p
Rated insulation voltage (cable)	250 VAC _{rms}	250 VAC _{rms}	250 VAC _{rms}	250 VAC _{rms}

General Specifications

	MP 3005	MP 3020	MP 3100	MP 3500
Pollution degree	3 (IEC 60664)	3 (IEC 60664)	3 (IEC 60664)	3 (IEC 60664)
Ambient temperature	- 20° to + 60°C (- 4° to + 140°F)	- 20° to + 60°C (- 4° to + 140°F)	- 20° to + 60°C (- 4° to + 140°F)	- 20° to + 40°C (- 4° to + 104°F) (max. amb. temp for < 200 A is + 60°C (+140°F))
Housing				
Dimensions	120 x 45 x 16 mm	120 x 45 x 16 mm	150 x 114 x 23 mm	150 x 114 x 23 mm
Material	ABS	ABS	ABS	ABS
Weight	200 g	200 g	750 g	750 g
Connection cable	2 m, 2 x 0.25 mm ²	2 m, 2 x 0.25 mm ²	2 m, 2 x 0.25 mm ²	2 m, 2 x 0.25 mm ²
Approvals	UL	UL	UL	UL
CE-marking	Yes	Yes	Yes	Yes

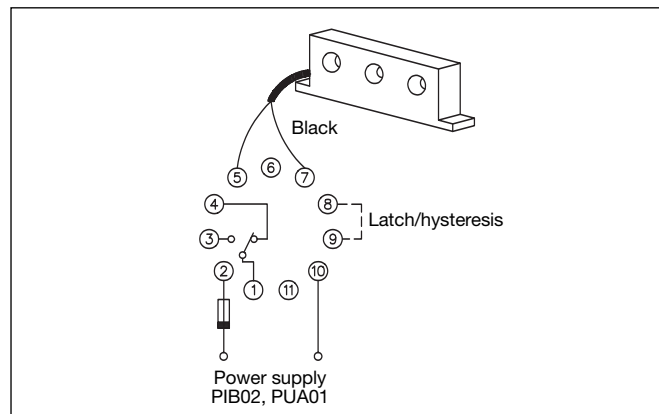
Mode of Operation

The output voltage is proportional to the highest current value in the 3 conductors which are drawn through the holes of the current metering transformer.

This makes it possible to use the current metering transformers, e.g. type MP 3005, for measuring far below the nominal range.

By drawing each conductor several times through the hole, the output voltage is multiplied by the number of times each conductor is drawn through the hole.

Wiring Diagram



Dimensions

