



Chipsmall Limited consists of a professional team with an average of over 10 year of expertise in the distribution of electronic components. Based in Hongkong, we have already established firm and mutual-benefit business relationships with customers from,Europe,America and south Asia,supplying obsolete and hard-to-find components to meet their specific needs.

With the principle of "Quality Parts,Customers Priority,Honest Operation,and Considerate Service",our business mainly focus on the distribution of electronic components. Line cards we deal with include Microchip,ALPS,ROHM,Xilinx,Pulse,ON,Everlight and Freescale. Main products comprise IC,Modules,Potentiometer,IC Socket,Relay,Connector.Our parts cover such applications as commercial,industrial, and automotives areas.

We are looking forward to setting up business relationship with you and hope to provide you with the best service and solution. Let us make a better world for our industry!



## Contact us

Tel: +86-755-8981 8866 Fax: +86-755-8427 6832

Email & Skype: info@chipsmall.com Web: www.chipsmall.com

Address: A1208, Overseas Decoration Building, #122 Zhenhua RD., Futian, Shenzhen, China

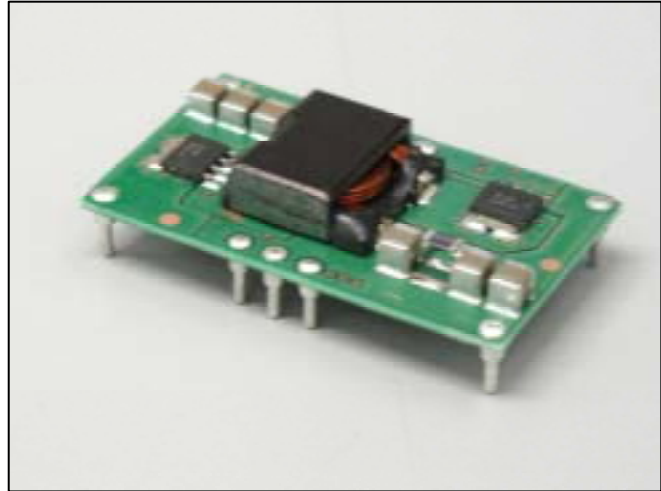


# DC-DC Converter Short Form

## MPDTH\*\*020WAS/WAH (22A output POL-Alliance product)

### ■ Features

- Point-of-Load Alliance product
- Up to 22A output current
- Wide-Output Voltage Adjust (0.8-5.5V)
- High efficiency up to 95% TYP (@5Vin 3.3V/14Aout)
- Wide Operating Temp - 40 °C to + 85 °C
- Open frame TH or SMT termination
- Auto-Track TM Sequencing
- Margin Up/Down Controls
- Pre-Biased start-up
- Output Over-Current Protection
- Output Voltage Sense
- ON/OFF Inhibit
- Under-Voltage Lockout

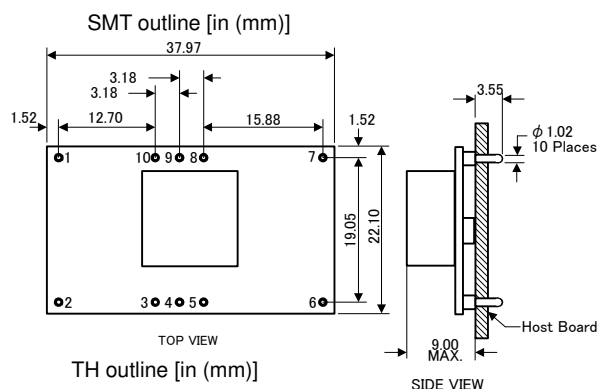
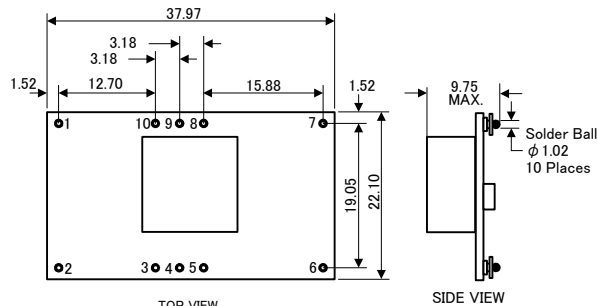


### ■ Ordering Information

Input Voltage	Output Voltage	Output Current	Model Number
3.0V to 3.6V	0.8V to 2.5V	22A	MPDTH03020WA(S)/(H)
4.5V to 5.5V	0.8V to 3.6V	22A	MPDTH05020WA(S)/(H)
10.8V to 13.2V	1.2V to 5.5V	18A	MPDTH12020WA(S)/(H)

OPTIONS: "WAS" -- SMT termination, "WAH" -- TH termination

### ■ Dimensions

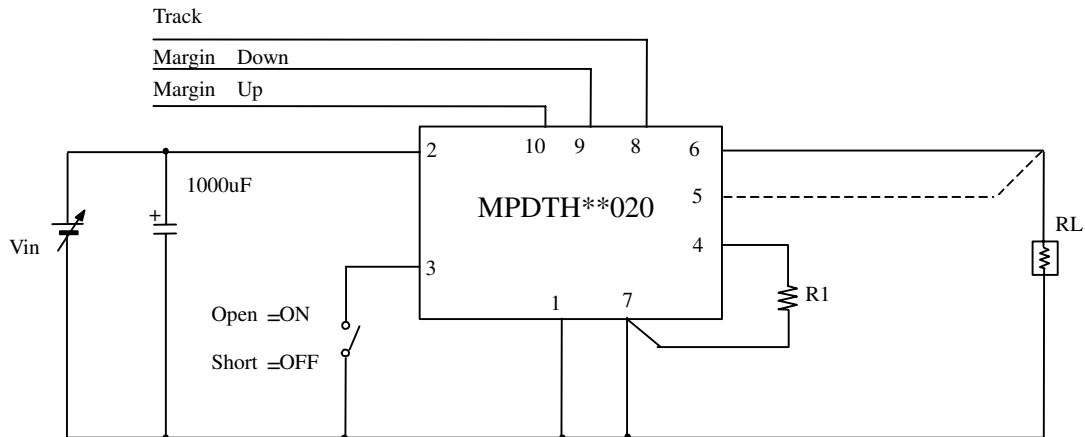


Pin No.	Signal	Pin No.	Signal
1.	GND	6.	Vout
2.	Vin	7.	GND
3.	Inhibit	8.	Track
4.	VoAdjus	9.	Margin Down
5.	VoSense	10.	Margin Up

#### ⚠ Note:

1. This datasheet is downloaded from the website of Murata Manufacturing co., ltd. Therefore, it's specifications are subject to change or our products in it may be discontinued without advance notice. Please check with our sales representatives or product engineers before ordering.
2. This datasheet has only typical specifications because there is no space for detailed specifications. Therefore, please approve our product specifications or transact the approval sheet for product specifications before ordering.

## Standard Application



## Output Voltage Adjustment

$$R1 = 10k \cdot \frac{0.8V}{V_{out} - 0.8V} - 2.49k \quad : \text{MPDTH03020 / 05020}$$

$$R1 = 10k \cdot \frac{0.8V}{V_{out} - 1.2V} - 1.82k \quad : \text{MPDTH12020}$$

## General Specifications

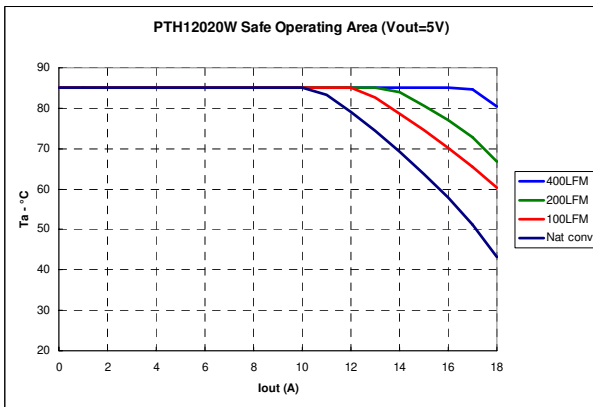
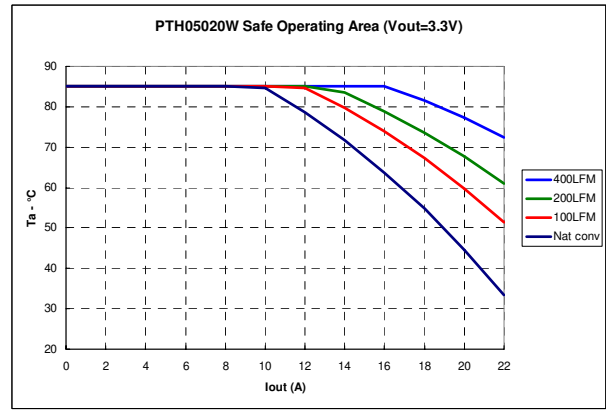
(Ta=25°C)

Item	Symbol	Condition	Parts Number	Min.	Typ.	Max.	Unit
Input voltage	Vin		MPDTH03020	2.95	3.3	3.65	V
			MPDTH05020	4.5	5.0	5.5	
			MPDTH12020	10.8	12.0	13.2	
Output voltage	Vout	Vin=2.95V to 3.65V	MPDTH03020	0.8		2.5	V
		Vin=4.5V to 5.5V	MPDTH05020	0.8		3.6	
		Vin=10.8V to 13.2V	MPDTH12020	1.2		5.5	
Total output variation	Regtot	Rset 1% tolerance, ±100ppm/°C				±3	%Vo
Output current	Iout	MPDTH03020, MPDTH05020		0		22	A
		MPDTH12020		0		18	
Ripple voltage	Vrip	Vin=3.3V, Vout=2V, Iout=22A			20		mVp-p
		Vin=5.0V, Vout=3.3V, Iout=22A			20		
		Vin=12.0V, Vout=3.3V, Iout=18A			33		
Efficiency	Eff	Vin=3.3V, Vout=2.5V, Iout=10A			95		%
		Vin=5.0V, Vout=3.3V, Iout=14A			95		
		Vin=12.0V, Vout=5.0V, Iout=12A			95		

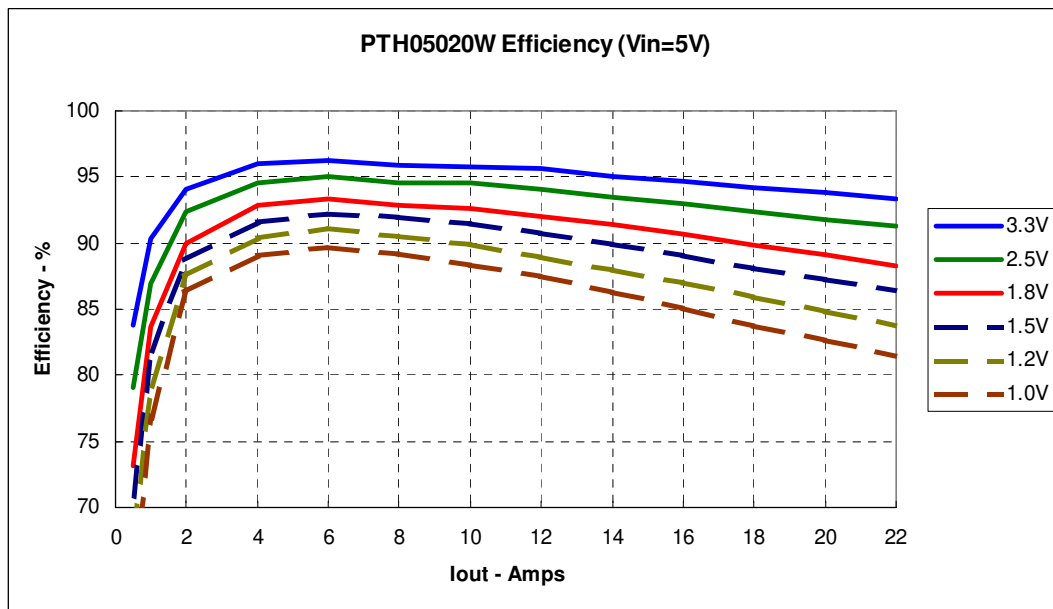
### △ Note:

1. This datasheet is downloaded from the website of Murata Manufacturing co., ltd. Therefore, it's specifications are subject to change or our products in it may be discontinued without advance notice. Please check with our sales representatives or product engineers before ordering.
2. This datasheet has only typical specifications because there is no space for detailed specifications. Therefore, please approve our product specifications or transact the approval sheet for product specifications before ordering.

### Thermal Derating



### Conversion Efficiency



**Note:**

1. This datasheet is downloaded from the website of Murata Manufacturing co., ltd. Therefore, it's specifications are subject to change or our products in it may be discontinued without advance notice. Please check with our sales representatives or product engineers before ordering.
2. This datasheet has only typical specifications because there is no space for detailed specifications. Therefore, please approve our product specifications or transact the approval sheet for product specifications before ordering.