



Chipsmall Limited consists of a professional team with an average of over 10 year of expertise in the distribution of electronic components. Based in Hongkong, we have already established firm and mutual-benefit business relationships with customers from,Europe,America and south Asia,supplying obsolete and hard-to-find components to meet their specific needs.

With the principle of “Quality Parts,Customers Priority,Honest Operation,and Considerate Service”,our business mainly focus on the distribution of electronic components. Line cards we deal with include Microchip,ALPS,ROHM,Xilinx,Pulse,ON,Everlight and Freescale. Main products comprise IC,Modules,Potentiometer,IC Socket,Relay,Connector.Our parts cover such applications as commercial,industrial, and automotives areas.

We are looking forward to setting up business relationship with you and hope to provide you with the best service and solution. Let us make a better world for our industry!



Contact us

Tel: +86-755-8981 8866 Fax: +86-755-8427 6832

Email & Skype: info@chipsmall.com Web: www.chipsmall.com

Address: A1208, Overseas Decoration Building, #122 Zhenhua RD., Futian, Shenzhen, China





VRLA Rechargeable Battery

MPL135-12

FEATURES

- Maintenance free(no water topping-up required)
- No free acid(Non-spillable battery)
- Low self-discharge rate, lower than 3% capacity loss per month
- Can be used in any orientation(excluding used inverted)
- The battery is designed with very lower resistance and exceeding high power performance
- Flame-arrestor is installed to ensure safety
- Absorbent Glass Mat technology for efficient gas recombination

APPLICATION

- UPS
- Telecom
- Golf-Carts
- Cable TV
- Power station
- Marine



SPECIFICATIONS

Nominal Voltage	12 V
Nominal Capacity	130.0Ah @ 10 hour rate F.V.(1.75V/cell)
Approx. Weight	41.1Kg(90.6lbs.)
Terminals	I3
Internal Resistance	≤2.9mΩ (Fully Charged)
Max. Charge Current	39.0 A
Short Circuit Current	3500 A
Operating Temperature Range	Charge : 0°C~50°C(32°F~122°F) Discharge : -20°C~60°C(-4°F~140°F) Storage. : -20°C~50°C(-4°F~122°F)
Container Material	Standard: PP(UL 94-HB) MPL135-12 Optional: Flame Retardant PP(UL 94-V0) MPL135-12FR



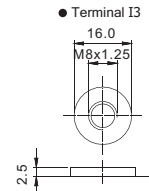
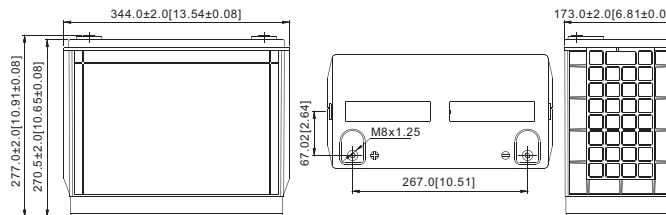
- IEC60896-21/22
- JIS C 8704-2
- GB/T 19638.2

DIMENSION(mm/inch)

OUTER DIMENSIONS

TERMINAL TYPE

- Length
344±2.0 (13.54±0.08)
- Width
173±2.0 (6.81±0.08)
- Container Height
270.5±2.0 (10.65±0.08)
- Total Height
277±2.0 (10.91±0.08)



Terminal Hardware Initial Torque:
I3(10.0Nm±5%)

Constant power discharge characteristics at 25 °C/77 °F Unit: W

Discharge Time F.V. (V/cell)	5 Min	10 Min	15 Min	20 Min	25 Min	30 Min	40 Min	50 Min	60 Min	90 Min
1.80V	4134	3467	2855	2387	2069	1817	1463	1227	1063.5	756.0
1.75V	4525	3681	3020	2480	2130	1863	1493	1253	1080.0	768.0
1.70V	4888	3832	3123	2544	2172	1893	1514	1268	1092.0	777.0
1.65V	5220	3950	3194	2592	2207	1914	1532	1281	1102.5	783.0
1.60V	5357	4027	3240	2627	2234	1932	1547	1292	1111.5	787.5

Constant current discharge characteristics at 25 °C/77 °F Unit: A

Discharge Time F.V. (V/cell)	5 Min	10 Min	15 Min	20 Min	25 Min	30 Min	40 Min	50 Min	60 Min	90 Min
1.80V	374	305	248	204	174	152	122	102	89.4	63.5
1.75V	412	327	261	213	182	158	125	105	90.8	64.5
1.70V	449	349	270	219	186	161	128	107	91.8	65.3
1.65V	492	369	278	224	189	164	129	108	92.7	65.9
1.60V	521	388	282	227	192	165	131	110	93.3	66.3

All data and artworks shall be changed without prior notice, BB reserves the right to explain and update the information contained hereinto.