



Chipsmall Limited consists of a professional team with an average of over 10 year of expertise in the distribution of electronic components. Based in Hongkong, we have already established firm and mutual-benefit business relationships with customers from,Europe,America and south Asia,supplying obsolete and hard-to-find components to meet their specific needs.

With the principle of “Quality Parts,Customers Priority,Honest Operation,and Considerate Service”,our business mainly focus on the distribution of electronic components. Line cards we deal with include Microchip,ALPS,ROHM,Xilinx,Pulse,ON,Everlight and Freescale. Main products comprise IC,Modules,Potentiometer,IC Socket,Relay,Connector.Our parts cover such applications as commercial,industrial, and automotives areas.

We are looking forward to setting up business relationship with you and hope to provide you with the best service and solution. Let us make a better world for our industry!



Contact us

Tel: +86-755-8981 8866 Fax: +86-755-8427 6832

Email & Skype: info@chipsmall.com Web: www.chipsmall.com

Address: A1208, Overseas Decoration Building, #122 Zhenhua RD., Futian, Shenzhen, China



CentralTM Semiconductor Corp.

145 Adams Ave., Hauppauge, NY 11788 USA
Phone (516) 435-1110 FAX (516) 435-1824

Manufacturers of World Class Discrete Semiconductors

MPQ2369

NPN SILICON QUAD TRANSISTOR

JEDEC TO-116 CASE

DESCRIPTION

The CENTRAL SEMICONDUCTOR MPQ2369 is comprised of four independent silicon transistors mounted in a 14 PIN DIP, designed for high speed saturated applications.

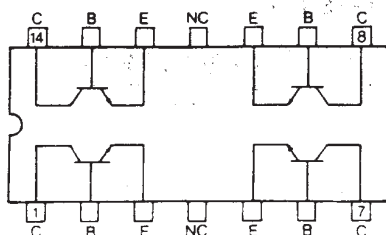
MAXIMUM RATINGS (T_A=25°C unless otherwise noted)

	SYMBOL		UNIT
Collector-Base Voltage	V _{CB0}	40	V
Collector-Emitter Voltage	V _{CE0}	15	V
Emitter-Base Voltage	V _{EB0}	4.5	V
Collector Current	I _C	500	mA
Power Dissipation	P _D (EACH TRANSISTOR)	500	mW
Power Dissipation	P _D (TOTAL PACKAGE)	1500	mW
Operating and Storage Junction Temperature	T _J , T _{STG}	-65 TO +150	°C

ELECTRICAL CHARACTERISTICS (T_A=25°C unless otherwise noted)

SYMBOL	TEST CONDITIONS	MIN	TYP	MAX	UNIT
I _{CB0}	V _{CB} =20V			400	nA
I _{EB0}	V _{EB} =3.0V			500	nA
BV _{CB0}	I _C =10μA	40			V
BV _{CE0}	I _C =10mA	15			V
BV _{EB0}	I _E =10μA	4.5			V
V _{CE(SAT)}	I _C =10mA, I _B =1.0mA			0.25	V
V _{BE(SAT)}	I _C =10mA, I _B =1.0mA			0.9	V
h _{FE}	V _{CE} =1.0V, I _C =10mA	40			
h _{FE}	V _{CE} =2.0V, I _C =100mA	20			
f _T	V _{CE} =10V, I _C =10mA, f=100MHz	450			MHz
C _{ob}	V _{CB} =5.0V, I _E =0, f=140kHz			4.0	pF
C _{ib}	V _{BE} =0.5V, I _C =0, f=140kHz			5.0	pF
t _{on}	V _{CC} =3.0V, I _C =10mA, I _{B1} =3.0mA		9.0		ns
t _{off}	V _{CC} =3.0V, I _C =10mA, I _{B1} =3.0mA, I _{B2} =1.5mA		12		ns

CONNECTION DIAGRAM



OUTSTANDING SUPPORT AND SUPERIOR SERVICES



PRODUCT SUPPORT

Central's operations team provides the highest level of support to insure product is delivered on-time.

- Supply management (Customer portals)
- Inventory bonding
- Consolidated shipping options
- Custom bar coding for shipments
- Custom product packing

DESIGNER SUPPORT/SERVICES

Central's applications engineering team is ready to discuss your design challenges. Just ask.

- Free quick ship samples (2nd day air)
- Online technical data and parametric search
- SPICE models
- Custom electrical curves
- Environmental regulation compliance
- Customer specific screening
- Up-screening capabilities
- Special wafer diffusions
- PbSn plating options
- Package details
- Application notes
- Application and design sample kits
- Custom product and package development

REQUESTING PRODUCT PLATING

1. If requesting Tin/Lead plated devices, add the suffix " TIN/LEAD" to the part number when ordering (example: 2N2222A TIN/LEAD).
2. If requesting Lead (Pb) Free plated devices, add the suffix " PBFREE" to the part number when ordering (example: 2N2222A PBFREE).

CONTACT US

Corporate Headquarters & Customer Support Team

Central Semiconductor Corp.
145 Adams Avenue
Hauppauge, NY 11788 USA
Main Tel: (631) 435-1110
Main Fax: (631) 435-1824
Support Team Fax: (631) 435-3388
www.centrasemi.com

Worldwide Field Representatives:
www.centrasemi.com/wwreps

Worldwide Distributors:
www.centrasemi.com/wwdistributors

For the latest version of Central Semiconductor's **LIMITATIONS AND DAMAGES DISCLAIMER**, which is part of Central's Standard Terms and Conditions of sale, visit: www.centrasemi.com/terms